

HEALTH POWER

Comfort Series



Neck, Shoulder & Back Scarf Massager

ST-301B

More than 22 kinds of different massage function with many massage modes, can relieve muscular fatigue, relax neck and shoulder ;

With heating function, can hasten the blood circulation in neck, shoulder and waist, can relieve fatigue, burn extra fatness, keep the body strong and slim; High quality limiting temperature and safe electric appliance can make sure the products used safe and reliable.

Neck, Shoulder & Back Scarf Massager

ST-301B

Neck, Shoulder & Back Scarf Massager

-Thank you purchasing the Scarf Massager. Before you start using the Scarf Massager, please read the operation manual thoroughly for correct methods of usage, especially on the section of Safety.

-This manual should be kept on hand for easy reference. It is your guide to a safe and efficient operation.

CONTENTS

Safety

Names of Parts and Functions

Features and Effectiveness

Operation

Suggested Usage

Product Care and Storage

Troubleshooting

Specifications

IMPORTANT SAFETY INSTRUCTIONS

Please read all the following instructions before using. When using an electrical appliance, basic precautions, as well as all safety instructions, should always be followed.

DANGER-to reduce the risk of electric shock:

- 1) Always unplug this appliance from the electrical outlet immediately after using and before cleaning.
- 2) Do not reach for an appliance that has fallen into water. Unplug it immediately.
- 3) Do not use while bathing or in a shower.
- 4) Do not place or store the appliance where it can fall or be pulled into a tub or sink.
- 5) Do not place in or drop into water or other liquid.

WARNING-To reduce the risk of burns, fire, electric shock, or injury to persons.

- 1) An appliance should never be left unattended when plugged in. Unplug from outlet when not in use, and before putting on taking off part.
- 2) Do not operate under blanket or pillow. Excessive heating can occur and cause fire, electric shock, or injury to persons.
- 3) Close supervision is necessary when this appliance is used by, on, or near children, invalids, or disabled persons.
- 4) Use this appliance only for its intended use as described in this manual. Do not use attachments not recommended by the manufacture.
- 5) Never operate this appliance if it has a damaged cord or plug, if it is not working properly, if it has been dropped or damaged, or dropped into water. Return the appliance to service center for examination and repairing.
- 6) Do not carry appliance by supply cord or use the cord as a handle.
- 7) Keep the cord away from heated surfaces.
- 8) Never operate the appliance with the air openings blocked, keep the air openings free of lint, hair, and the like.
- 9) Never drop or insert any object into any opening.
- 10) Do not use outdoors.
- 11) Do not operate where aerosol (spray) products are being used or where oxygen is being administered.
- 12) To disconnect, turn all controls to the off position, then remove plug from outlet.

SAFETY

1. Usage Environment

- Do not use the Scarf Massager in an excessively humid or dusty environment as this may result in malfunction or electric shock.
- Do not use the Scarf Massager in a room with temperature reaches of 40°C or higher.
- Do not expose the Scarf massager to heaters, stoves or direct sunlight.
- Scarf Massager is developed for personal use and not for commercial purposes.

▲ Caution

- If you use Scarf Massager in a cold room, do not increase the room temperature abruptly. It is recommended that you increase the temperature gradually to a normal level.
- If the Scarf Massager is stored in a cold place and in being brought into a warm environment, it is advised to wait a hour before use. This is because its performance may not be at optimum level, as there may be water droplets on the mechanical parts due to condensation. Using the Scarf Massager under such condition may result malfunction.

2. Safety Precautions

- To ensure safe and correct use of the Scarf Massager, do not operate it without reading this operation manual carefully.
- Use the Scarf Massager only for its intended use as stated in this operation manual.
- Do not use the Scarf Massager when the fabric cover is torn.
- Do not insert any object or flammable material into the Scarf Massager. This may result in electric shock, malfunction or risk of fire.
- Do not insert or spill liquid over the Scarf Massager at all times. Remove the power plug from electrical outlet immediately if liquid is accidentally spilled or poured over the Scarf Massager.
- Do not use wet hands to connect or disconnect the plug from the electric outlet.
- Do not exert excessive pressure when using the Scarf Massager.
- Remove all ornaments, or any other hard objects, around the body area which is going to be massaged by Scarf Massager, includes necklace, belt, e.t.c.
- Do not cover Scarf Massager during operation. This may result a rise in major temperature and subsequent malfunction or fire.
- Some level of noise during usage is normal because of the tapping function.
- Stop operation immediately if you experience any discomfort.
- This product is not intended for self-diagnosis or self-treatment of conditions that should be managed by a qualified health care provider.
- People under medication or with medical conditions, please consult your doctor before use.

SAFETY

- Please do not use the product if you are not feeling well or if you are pregnant.
- Suggested usage duration is 10 minutes.Ensure that the Scarf Massager rests for 10 minutes or more before the next usage,as continuous usage over a long period may activate the overheat protection device.

▲Cautions

- The Scarf Massager is not intended for use by persons (including children) with reduced physical,sensory or mental capabilities,or lack of experience and knowledge,unless they have been given supervision or instruction by a person who responsible for their safety.
- Children should be supervised to ensure that they do not play with the Scarf Massager.
- Do not apply Scarf Massager directly on head,joint of elbows and knees,breasts or abdomen.

3.Not suitable using conditions

- If water is accidentally spilled onto the Scarf Massager;this may result in electric shock.
- If abnormal or severe pain is felt during massage;stop operation immediately and consult your doctor.
- If you detect any malfunction or any other abnormal condition during operation.
- If there is a power failure;injury may occur when power is restored unexpectedly.
- If there is lightning.

4.Assembly and Repair of miso Scarf Massager

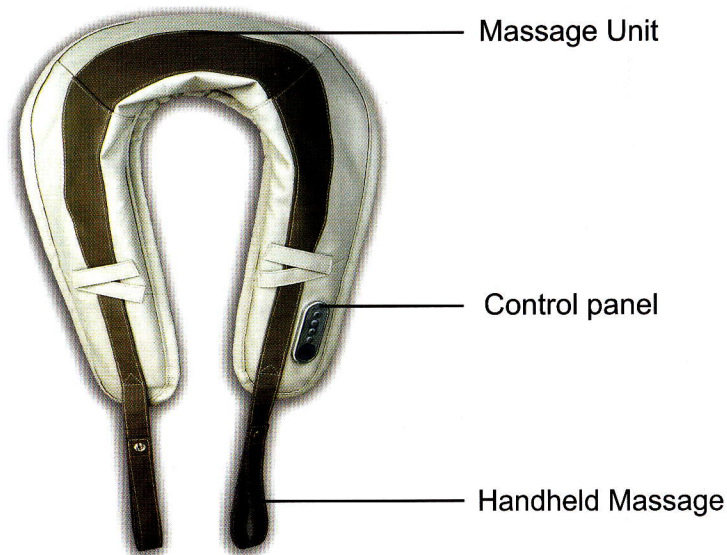
- Do not remove the fabric cover of the Scarf Massager.Touching the internal components may result in malfunction or electric shock.
- The Scarf Massager must only be serviced or repaired by miso Service Centre.Do not attempt to disassemble or repair the Scarf Massager yourself,it is possible to void the product is warranty.

SAFETY

5.Things To Note About the Power Plug and Cord

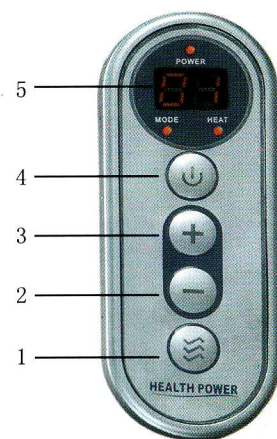
- Check that the Alternating Current(AC)voltage is corresponding with the specification indicated for the Scarf Massager.
- Do not connect or disconnect the power plug from electrical outlet with wet hands.This may result in malfunction or electric shock.
- When disconnecting the power plug,pull it out by holding the plug,not the cord.
- Although operation will be stopped automatically by the Auto-Timer function,always remember to switch off the main Switch after use.
- Do not place the power cord under heavy objects.
- Do not wing the power cord around the Scarf Massager as this may damage the cord and result in a fire or electric shock.
- Do not operate the Scarf Massager with a damaged cord or tampered cord.
- Do not use the Scarf Massager with a damaged cord or tampered cord.
- Do not use the Scarf Massager if the electrical outlet is loose.
- Do not carry the Scarf Massager by the power cord or use it as a handle.
- If the power cord is damaged,it should be replaced by customer Service Centre or its authorized service agents.

NAME OF PARTS AND FUNCTIONS



Control Panel

- 1.Heating
- 2.Decrease
- 3.Increase
- 4.POWER/MODE
- 5.LED Display



FEATURES AND EFFECTIVENESS

- 1)10+1 modes, 1 new stronger mode used, can reach 22 kinds of massage functions, Relax the neck and shoulder, relieve muscular fatigue, enjoy comfortable life!
- 2)heating function, Heating therapy can hasten the blood circulation in neck & shoulder, can relieve fatigue, burn extra fatness, keep the body strong and slim
- 3) High quality limiting temperature and safe electric appliance can make sure the products used safe and reliable. Circuit protection. Built-in auto timer of 10 minutes.
- 4)You can choose massage left or right shoulder separately, it's useful for the muscular fatigue or pain caused by stiff neck or other illness.
- 5)Have bulit-in sandbag, not only increase the weight, but also enables the massage powerfully, you can enjoy the comfort with slight vibration.
- 6)Digital display.
- 7)Artificial leather material.
- 8) Tapping massage for effective relief of neck, shoulder, thigh aches

OPERATION

1. preparation before use

Connect the power plug to the electrical outlet.

Remove all ornaments, or any other hard objects, around the body area which is going to be massaged, includes necklace, belt, e.t.c.

Place the massage unit on the part of the body to be massaged and make sure it's comfortably secured.

2. To start auto tapping massage programmes

After connecting the power supply, you will hear the alert from the machine, and then the power light will flash and color is red.

Press the "Start/Mode" button for 2 seconds, the machine will start working, the red light will stop flashing, and red light turn as blue light, when the machine enter auto massage programme, the light will be shown as blue light always, the machine will work from mode 1 to 22 automatic, and work periodically.

3. To adjust massage intensity

Press the "+" button and enter massage intensity menu.

Press the "+" button again, intensity will increase one degree level, the strongest mode is "mode 11".

Press the "-" button, it will decrease one degree level.

Press the "Start/Mode" button to stop the massage at any time.

4. To use the heating function

Press the "heating" button, heating function will work, meanwhile the light color will turn as yellow, you can start or close the heating function at any time.

5. To end massage

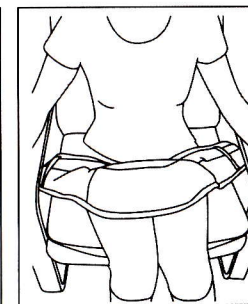
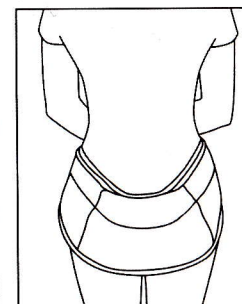
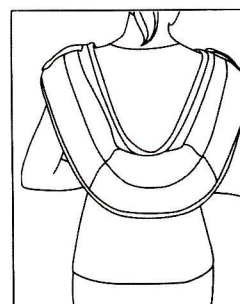
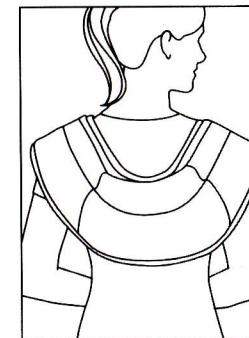
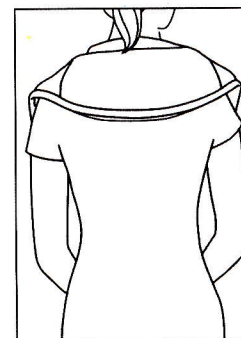
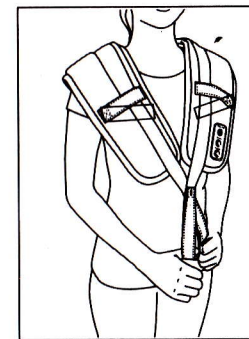
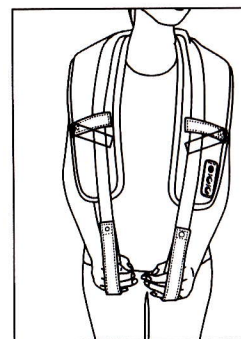
Press the "Start/Mode" button for 2 seconds to stop the massage.

Remark:

1. The machine will enter auto mode at the beginning, and the auto mode will start from Mode 5 intensity, maybe some people can't fit the intensity, so please press "-" to decrease the intensity to your favorite intensity and mode. When massaging, if you feel the intensity is weak, you can press "+" to increase the intensity.

2. The machine is with heating function, if you use the heating function too long, when the working temperature exceed 55 , the machine will stop working automatic. It's not because we have used high quality protecting technology so that you can use the products safety, not because of quality defect. You can close the power supply, after the machine temperature decreased, you can use it again.

SUGGESTED USAGE



PRODUCT CARE AND STORAGE

1. Storing Scarf Massager

- Keep the Scarf Massager clean and away from places of high humidity.
- If the Scarf Massager is not to be used for a long period of time, cover the Scarf Massager with a dust cover and Scarf Massager its power plug from the electrical outlet.

▲ Caution

- Do not store the Scarf Massager under direct sunlight or in places of high temperature.

2. Cleaning miso Scarf Massager

- Before cleaning, ensure that Main Switch is turned off and the power plug is disconnected from the electrical outlet.
- Wipe off dust and dirt from miso Scarf Massager after each use with a damp cloth.

▲ Caution

- Do not use abrasive cleaning agents like benzene or thinner to clean the Scarf Massager.

3. Cleaning the Control Panel

- Use only a dry cloth to clean the Control Panel.

▲ Caution

- Do not use a damp cloth to clean the Control Panel as this may result in malfunction.

TROUBLESHOOTING

- If you encounter problems with the operation of the Scarf Massager, please check the following points to see if they can be rectified. If the Scarf Massager still malfunctioning or does not work, please turn off the miso Scarf Massager and remove the power plug from the electrical outlet. Contact Service Centre for servicing.
- Do not dismantle or attempt to repair the Scarf Massager yourself. Doing so will void the warranty and will not bear any responsibility for any subsequent consequences.

Problem	Possible Cause/Action
The Scarf Massager will not start.	<ul style="list-style-type: none">-Check that the power plug is securely connected to electrical outlet.-Check that the electrical outlet is switched on.-Ensure that the message button is pressed properly.
The message stops midway.	<ul style="list-style-type: none">-Check that the power cord has not been disconnected from the electrical outlet.-Check that the button on the Control Panel was not pressed accidentally.-The overheat protection device may have been activated. Turn off the Main Switch and allow the Scarf Massager to cool down.

SPECIFICATIONS

Model	Neck, Shoulder & Back Scarf Massager
Model Number	ST-301B
Voltage	220V/50Hz
Power	180W
Auto Timer	Approximately 10 minutes
Gross Weight	4.2 Kg
Net Weight	3.7 Kg