

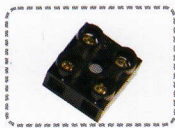
Cable Connection Instruction



Relay Connector



RJ45 Connector



Terminal Block



AC Cable



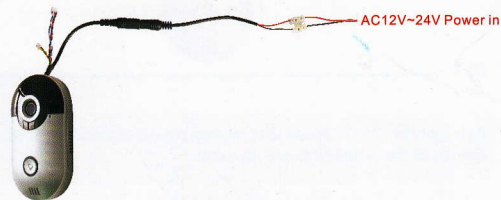
Pic 1

Attention: Please fold the power line with AC Cable like pic 1 before to put it into the terminal block.

SECTION 1: 12~24V AC Power Connection

If you use 12~24V AC power support for the WiFi Doorbell, Please do the following steps.

1. Please find the AC Cable and connect it with the DC connector of the doorbell.
2. Please find a terminal block, connect with the AC Cable power line.
3. Please connect the AC power in cable to the terminal block.
Red to red, black to black.
4. Please refer to the pic 2.



Pic 2

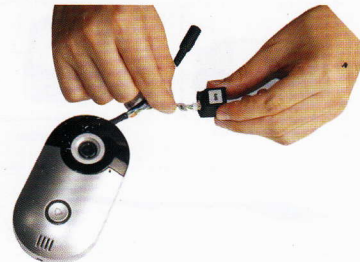
SECTION 2: 12V DC Power Connection



Pic 3

If you use the 12V DC power adapter, then please connect the DC power connector directly to the doorbell power-in cable.

SECTION 3: RJ45 Connector Connection

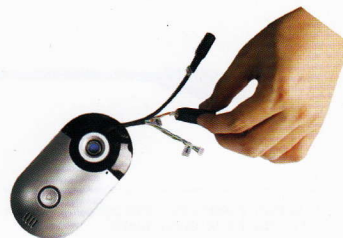


Pic 4

The RJ45 Connector is for the LAN Cable connection, but if you use the WiFi, then no need to use the RJ45 Connector.

SECTION 4: Relay Connector Connection

(Relay is optional accessory according to customer's requirement)



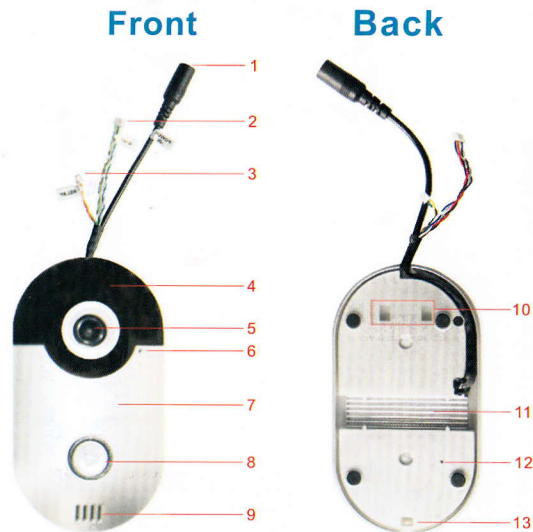
Pic 5

The Relay Connector is for connecting the electronic lock to open the door. The APP will require a code with 6 digits before to unlock the door.

1. Preface

Thank you for using the Wi-Fi Doorbell..... This is the new smart home wireless doorbell. It supports two way audio, motion detection, snapshots, recording and more... Please take a minute to carefully review these instructions.

1.1 Diagram



1. Power line; Support 12~24VAC/12VDC
2. RJ45 interface connection cable (4 lines with pin)
3. Lock Relay connection cable (2 lines with pin)
(Optional, if your version supports this function)
4. 4 pcs IR LED inside
5. 2.5mm Lens
6. Microphone
7. Logo
8. Doorbell Button
9. Speaker
10. Bracket Hole
11. Cooling Aluminum Sheet
12. Reset Button
13. Bottom Screw Hole

1.2 Package



2. Installation

Tools you may need: Pliers, Power Drill or Screw Driver, Wire Strippers, Insulation Tape.

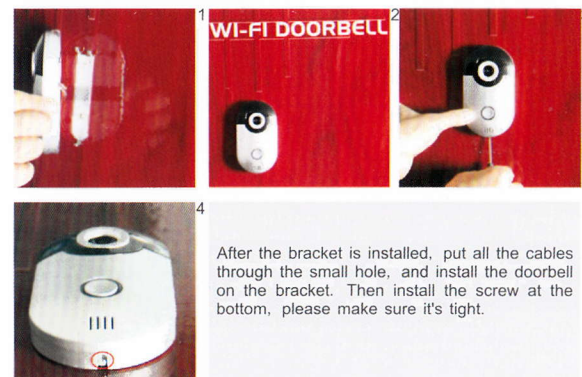
Statement: Drill two screw holes on the position that the doorbell will be installed, and put the rubber plug inside, punch a small hole for threading all the cables in advance.

Note: The sample installation is on the wooden door, just FYI.

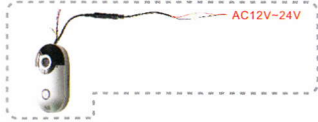
2.1 Install the Bracket



2.2 Install the Doorbell



2.3 Power Line Connection



Attention:

1. There is no positive or negative for the power line of the doorbell.
2. The Doorbell can only connect to low voltage from 12~24VAC or 12VDC/0.5A.
3. Please use insulation tape to keep the power line safely connected.

Connect the Power Line:

Attention:

1. If you are using a doorbell chime with power supply via low voltage transformer, you can use the current cables of the transformer to connect the power line directly to the cables. It supports 12~24VAC.
2. If you are not using a doorbell chime, you can use the DC connector which is in the package and a 12VDC Power adapter (not included) to provide power.



Note: You have to buy the 12VDC adapter separately, normally amperage greater than 0.5A is ok

2.4 Power On



After the power line is connected, the device will power on. The doorbell button ring will turn on blue and the IR LED will light on if the environment is dark.

3. Wi-Fi Connection Quick Guide

3.1 Install the APP

Please download and install the APP from Apple Store or Google Play to your smart phone or tablet first. The APP name is :
"Wi-Fi Doorbell": The basic version without lock function.
"Wi-Fi Doorbell-Pro": The high version supports lock function.
Please choose the suitable version for your doorbell.

3.2 Enter Setting Mode

After the doorbell power on, press the doorbell button for at least 8 seconds, it will change to the setting mode, the button will turn to blue and blink, voice prompt will be heard (Network Configuration Mode, Please Set it Done in 5 Minutes). Then we can start to set the Wi-Fi Connection.

3.3 Set the WiFi Connection

3.3.1 Connect to the AP Host of Doorbell

Open the WLAN settings of your Smart Phone or Tablet, refresh it, find out the Wi-Fi SSID of the doorbell, connect it.

Note: This doorbell supports Wi-Fi AP host, default SSID is "Bell+ 6 digits", password is 123456789.

3.3.2 Add the Doorbell on APP

Run the APP on your Smart Phone or Tablet, click to add a doorbell, the default username is admin, no password. Please follow the instruction (Details see Chapter 4 and 5).

3.3.3 Set the Doorbell Connect to your Wi-Fi Router

1. Click and select the WiFi Settings menu.
2. Select your wireless router SSID and Enter the password.
3. If the setting is correct, the doorbell will restart and connect to the wireless router.

Note: If the Wi-Fi connection settings failed, please make sure the Wi-Fi SSID and password is correct and try it again.

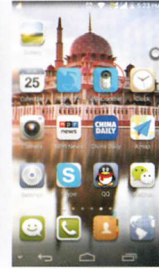
4. APP User Manual for iOS & Android

All the pictures are based on the "Wi-Fi Doorbell Pro" version.

1. Search "Wi-Fi Doorbell Pro" from Apple Store & Google Play and install the APP.
2. Click the "Wi-Fi Doorbell Pro" icon and run the APP.



iOS

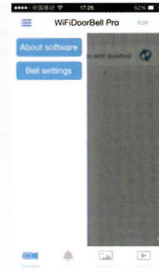


Android

3. The APP Main Interface, Click or to show APP settings.



iOS

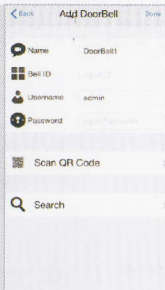


Android

Doorbell: Doorbell List
Record: Show Visitor Call Information
Picture: Show SnapShot
Video: Show Record Video File

Bell Ring: Set Bell Ring Tone
Alarm Ring: Set Alarm Ring Tone
About: About the APP information

4. Add a Wi-Fi Doorbell.

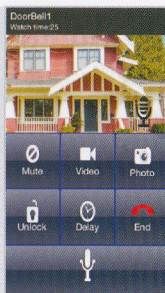


It supports three types to add a doorbell

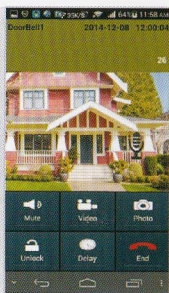
1. Type in the Bell ID manually
2. Scan QR Code on the doorbell or package
3. Search in the LAN

Then input the doorbell default username admin, no password.

5. Access the Doorbell.



iOS



Android

:Hold the microphone icon to speak


:To listen the sound or mute

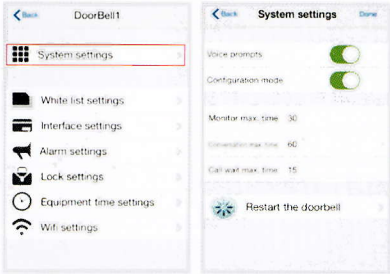
:Take Video

:Take Snapshot

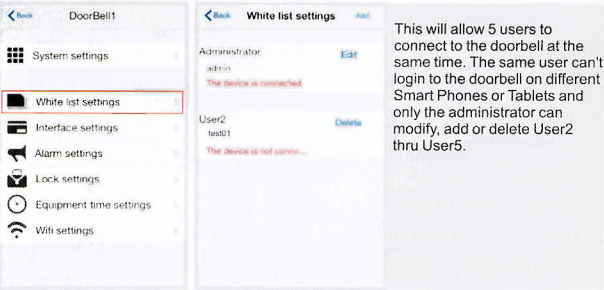
:Unlock. In the course of development, can't ensure this function work normally with all electronic locks

:Prolong the monitor time

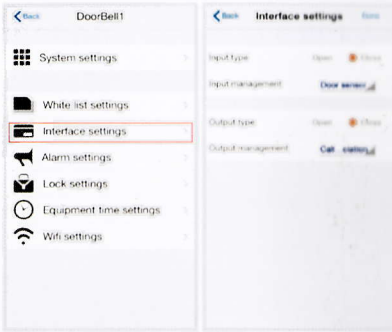
6. Please click  to change the advanced settings.
(it's almost same settings for iOS & Android smart phone, the following settings is based on the iOS, just for your reference.)



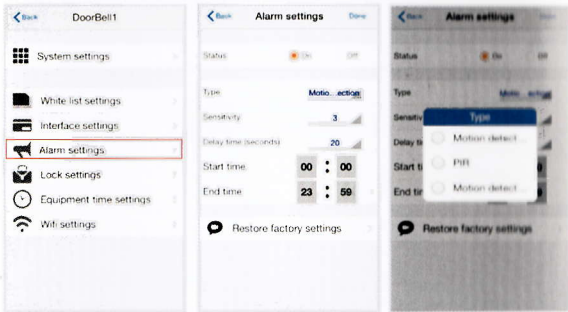
Voice Prompts: If off, you won't hear the voice prompts of doorbell
Configuration mode: If off, you can't enter the doorbell setting mode
Monitor max time: 10~300 seconds
Conversation max time: 10~300 seconds
Call wait max time: 10~60 seconds



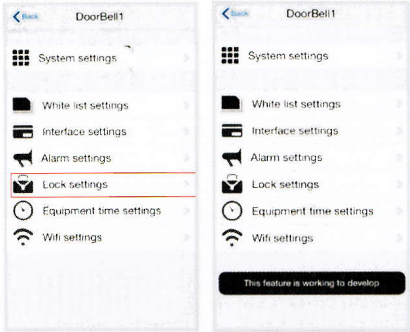
This will allow 5 users to connect to the doorbell at the same time. The same user can't login to the doorbell on different Smart Phones or Tablets and only the administrator can modify, add or delete User2 thru User5.



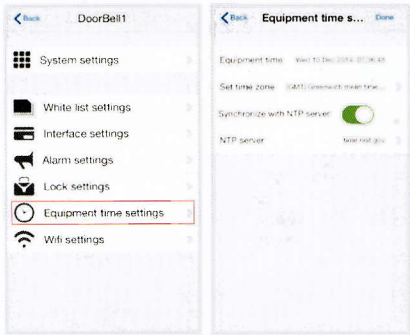
This function is in the course of development. Can't ensure it work normally.



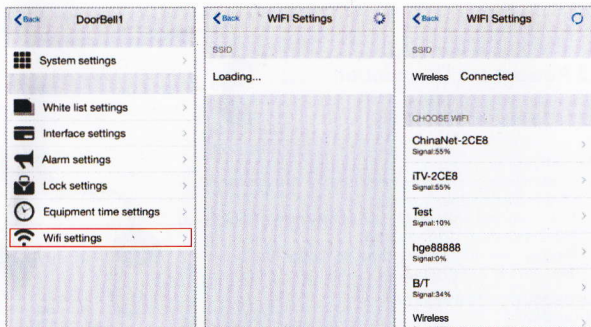
Currently the doorbell only supports a motion detection alarm. For the sensitivity, the smaller value the more sensitivity. Delay time means the doorbell will not alarm during the Delay time even it detects motion.



Our Lock relay is based on the pulse, it only work when the electronic lock match with the pulse. (Optional, only the Pro version supports this function)



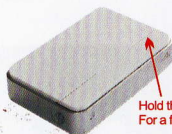
You can set the doorbell time in Equipment time settings.



You can connect the doorbell with corresponding SSID in the WiFi Settings.

5. RF Bell Setting

Press and hold the RF Bell Volume button, and press the doorbell button for at least 3 times. Then the doorbell will connect with the RF Bell Receiver.



Hold this Volume Button
For a few seconds



Press this button
at least 3 times

The RF Bell supports digital match code, normally, one Wi-Fi doorbell can connect any quantity of RF Bell which you plan to install.

Once match code setting success, press the button on the Wi-Fi doorbell, the RF Bell will ring.

Note:

This RF Bell supports polyphonic melody, and work frequency is 433 Mhz. You have to buy 2 pieces AA Battery for the RF Bell separately.

6. Technical Support

Thank you very much for using our products.

If you have any issues or questions that the manual has not answer. Please contact your reseller and ask for help first, if they cannot resolve your problems, please contact our service department.

If you have any good suggestions, please contact us freely.

For Video, please visit YouTube.