

Quick Operation Guide

ALL-IN-ONE LCD DVR



Basic operation are included in this operation guide, more details please refer to user manual

Thanks for buying our digital video recorder

Declaration:

Incorrect description of technology and printing may be included in this manual, we'll update it irregularly without prior notice; updated contents will be printed in new version. we'll keep on improve the program or update the description of manual. if any inconformity, please in kind prevail!

Safety Precautions:

- ◆ *To avoid risks and possible loss of property, please be sure to follow the right operations printed in the manual*
- ◆ *Please place and use the product under the environment 0°C-55°C, avoid place it in humid environment*
- ◆ *Avoid direct sunlight or heat sources*
- ◆ *Avoid humid, dusty or smoky environment*
- ◆ *Keep the device in horizontal installation condition*
- ◆ *Installing it in stable sites, avoid downfall*
- ◆ *Please don't place other devices on the DVR*
- ◆ *Install DVR in well-ventilated sites, avoid blocking the vents*
- ◆ *Use it under rated input and output range*
- ◆ *Please don't disassemble the DVR at will*

Installation

1.1 Open Package Check

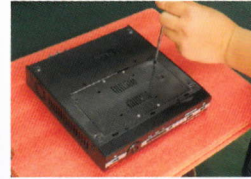
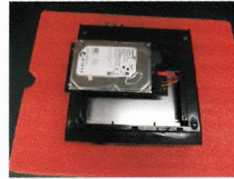
First, please check whether any visible damage to the package appearance. The protective materials used for the package of the DVR can protect most accidental clashes during transportation.

Then, checking if all accessories are equipped

1.2 Hard Disk Installation



10 inch LCD DVR



7 inch LCD DVR



7 inch removable LCD DVR



TOUCH KEY DVR

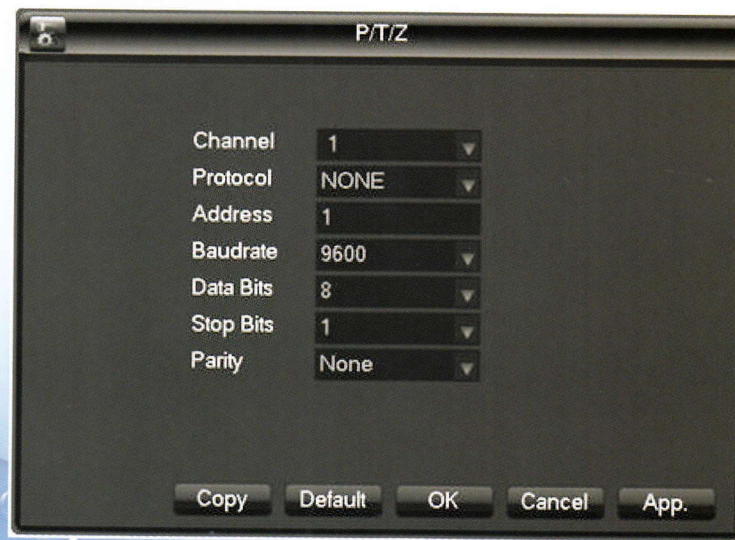
1.3 Back Panel Instructions

Instruction: Different models with different functions, please in kind prevail, details please refer to following table.

Identification	Name	Description
Video in	Video input	1-32CH multi-channel video input (BNC)
Audio in	Audio Input	1-32CH multi-channel audio input (RCA)
Line in	Voice input	Voice intercom
Video out	Video output	Video output
Audio out	Audio output	Audio output
VGA	VGA port	VGA output
HDMI	HDMI port	HDMI output
Video spot	Video AUX output	AUX output video, not support menu operation
USB	USB port	USB2.0, used for USB mouse, USB memory stick,
LAN	LAN port	10/100M Adaptive Ethernet Card (RJ45)
485+, 485-	RS-485 port	PTZ control
DC/AC	Power input	DC 12V/4A,
Power	Power switch	Power on/off

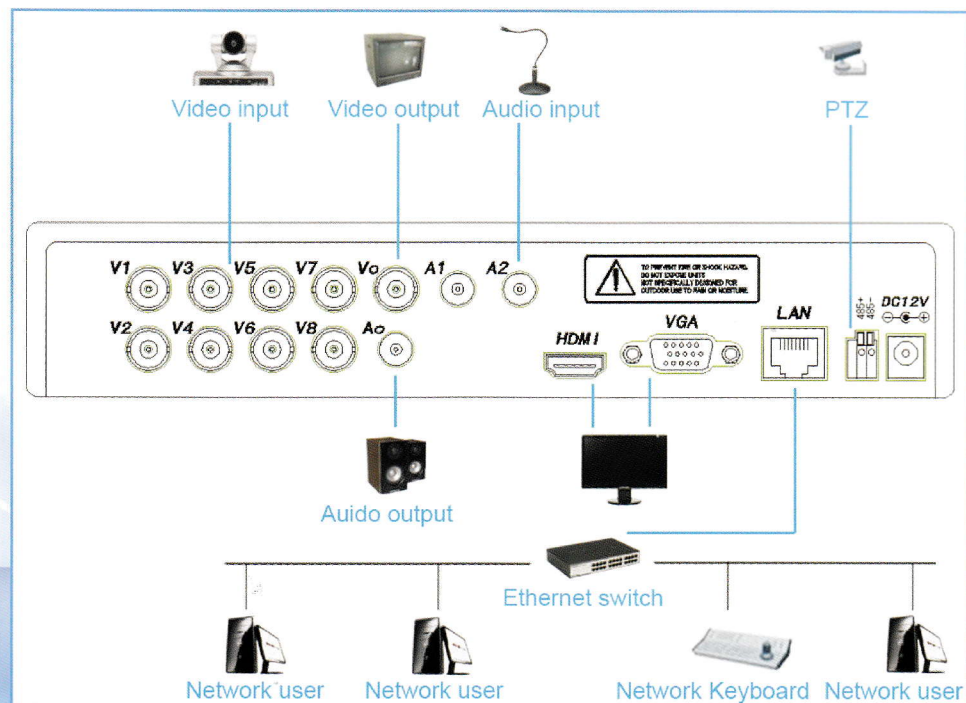
1.4 Connection of PTZ and DVR

- Connect RS485 cable of speed dome to RS485 port of DVR
- Connect the video cable of speed dome to DVR input port
- Power on speed dome camera
- Details please refer to 【basic operation 2.5 PTZ control】



1.5 Connection Diagram

Eg.8 Channel DVR:



Basic Operation

2.1Power ON

After correct installation and power on, the power indicator will be lighted, DVR automatic power on. Buzzer will make beep sound after starting up, enter into multi-picture monitoring status, you can make operations and configuration now. DVR will start recording if within set record time.

2.2Power OFF

Method 1: Enter shut down interface **【Main menu】 > 【Shutdown】 > 【Shutdown】**, select **【shutdown】**

Method 2: Long press **【POWER/SCREEN】** on the front panel

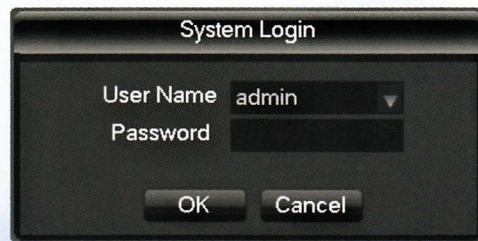
2.3ON/OFF Screen

1: Short press **【POWER/SCREEN】** on the front panel or press **【SCR】** of remote control to turn on/off the screen 2: Double-click mouse wheel to turn on /off the screen

2.4Login in

You've to login in DVR first before operation and DVR system will offer relative functions according to user permissions

Instructions: preset user: admin, and it's default administrator, **password: 123456**. it's possible to change password, but can't change the user rights. administrator can add, delete or configure user parameters.








Login in interface

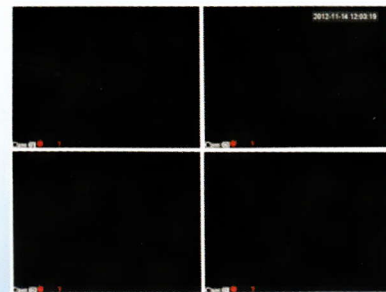
Password protection: continuous input 3 times wrong passwords, there'll be alert tips. continuous input 5 times wrong passwords, account will be locked. system reboot or unlock after 30 minutes. For the sake of security, please change "username" and "password" in 【user management】 timely after reboot.

2.5Preview

After normal logging, it'll enter multi-picture preview status, date ,time, channel name, record and alarm status are displayed under the condition of preview

Functions description of state identifications:

Identification	Description	Identification	Description
	recording		Tour switch(ON/OFF)
	Motion detection		Audio output switch(ON/OFF)
	Screen freeze		



Preview Interface



2.6 PTZ Control

Realize easily PTZ control operation by following steps

Step one: **【MAIN MENU】 > 【OUTPUT】 > 【P/T/Z】**, set channel and protocol etc.

Step two: Right click mouse **【menu】 > 【P/T/Z】** enter the window of PTZ control

【step】 set the rotation range of PTZ, the bigger the number, the greater the range will be, range::1 ~ 8 .

【zoom】 click  and  to adjust the magnification of camera

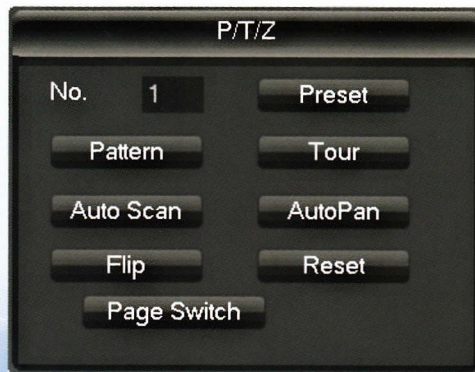
【focus】 click  and  to adjust the focus of camera

【Iris】 click  and  to adjust the iris of camera

【set】 enter function configuration menu .



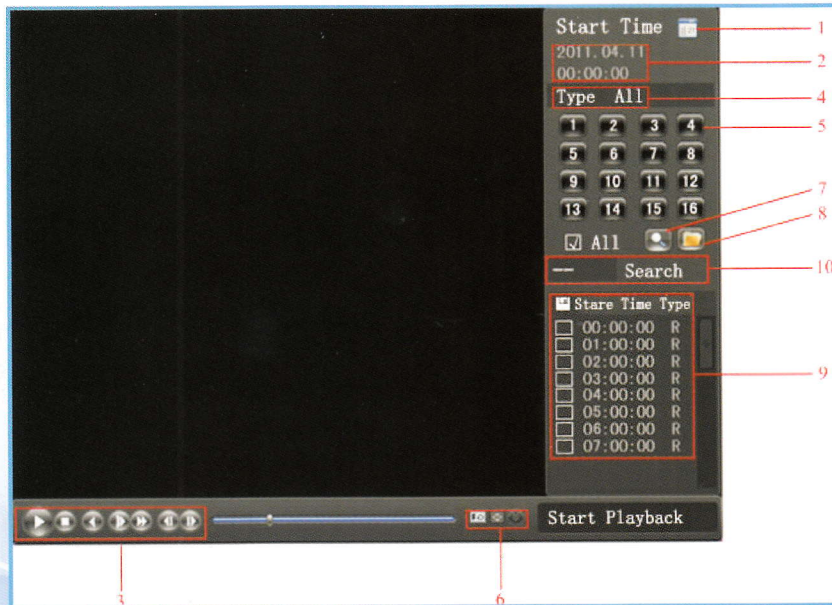
PTZ Control interface



2.7 Playback



Right click mouse 【menu】 > 【Search】, enter playback interface.

Caution: the HDD for storing recording files must be set to Read Only or Read-Write, to make sure the normal playback



Playback interface

Playing zone instructions:

Index	Type	Description
1	Calendar	Click the calendar icon  to show the record list (only the dates with green background take records.) and then click a specific date to call the record. The list will be upgraded automatically.
2	Time	Select record search start and end time.
3	Play	Playback control: stop/play, pause, fast, slow, previous/next frame in pause.
4	Recoding mode	Choose searched recording mode, including whole, outside alarm, motive detection, whole alarm recording.
5	Channel	Choose searched channel
6	Play	Choose to play the previous or next file; choose to play the previous or next channel.
7	Search	Choose the start time, channel, and click "search" will display results in the list.
8	Backup	Tick "  "to choose backup file in file list box, click backup button, cancel backup file ---click "√"from backup menu "√".
9	Record List	128 video records shows in searching list choose file and press enter or double click mouse to view record. File type: R—normal record, A—alarm record; M—motion detection record.
10	Channel	Choose the channel to playback.



Playing toolbar instruction:

Button	Description	Button	Description
	play/stop		slow play, support 2X slow play
	backwards, 2 seconds each click		Next frame
	close		Full screen
	Fast-forward, support 3X fast-forward		


Special functions:

Precise playback: Enter **【time query】** message box, input the time(hour, minute, second) of recording file, recording type, Channel Number, click **【play】** to play the recording file;

Digital zoom: drag out any size area by left button of mouse on the screen when playback under full screen condition ,click left button to realize zoom playing of the area, click right button to exit zoom playing.

2.8 Front Panel Operation

Instructions: Functions of following digital video recorder front panel keys, please in kind prevail

Key Name	Identification	Function
ON/OFF	POWER/SCREEN	Long press 5 seconds to switch on/off DVR, short press to switch on/off screen
USB Port		U disk upgrade , mouse operation and other USB devices
Recording Switch	●	Start recording
Direction Key	←→↑↓	cursor direction key, to select menu options up, down key, to allocate settings and figures, switch preview picture left, right: switch selected controls
Enter Key	Enter,/OK/menu	Operation confirmation, Enter menu
Back/Cancel	Esc	go back, cancel current operation
PTZ Control	PTZ	Quick start PTZ menu
Mute	MUTE	MUTE
Function Key	Fn	Pop-up AUX functions window in appointed preview interface. 【Long press】 to switch the Input method, 【short press】 to delete characters in Text input BOX
Power Indicator	POW	Red, light on, starting up state
Network Indicator	NET	light on when connect to network cable, flashing when IP conflict
Recording Indicator	REC	Light on when recording

2.9 Network Access

2.9.1 Network Setting

【MAIN MENU】>【CONFIGURATION】>【NETWORK】. enter setting interface.

Cautions: if DHCP server exist in the network, please select "automatic obtain IP address" it'll be effective. Otherwise, users can configure "IP, subnet mask, Gateway and DNS according to the need.

【network card】 users can select it according to your own requirements.

【IP address】 To set IP address, default IP address:192.168.1.88.

【 subnet mask 】 To set subnet mask of device. default subnet mask:255.255.255.0.

【default gateway】to set default gateway of device, default gateway:192.168.1.1.

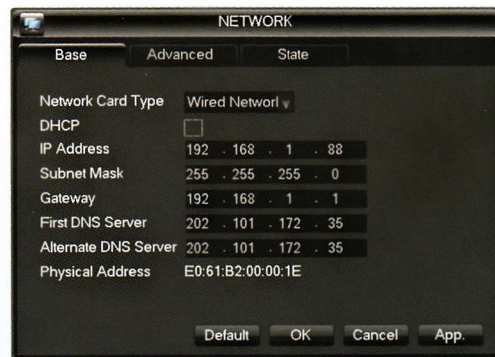
【DNS configuration】 DNS, analyze domain name to IP address, the address is provided by your local network operators.

2.9.2 Browser Access

Please make sure that the DVR is connected to the network correctly first.

Open IE browser, entering the IP address and port number of the digital video recorder. For Example: DVR IP:192.168.1.88, then input :<http://192.168.1.88> into the address bar.


Note: IE will automatically download the Plug-in if accessing DVR for the first time, please allow installation or install it manually.(Details please refer to 《IE plug-in installation guide》)



Network configuration interface

2.9.3 Client Access

Client login

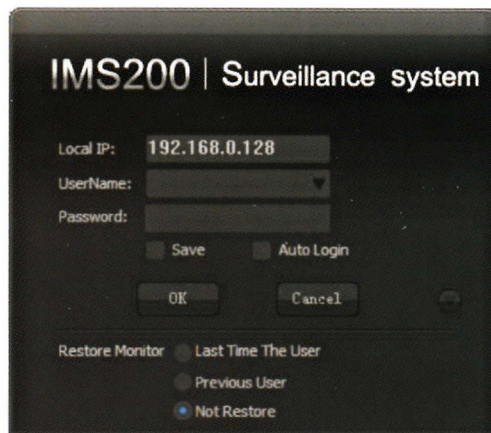
Install the client software on PC, double click  **IMS200.exe** ,open network surveillance login dialog, enter " **user name**" and " **password**"(note: default " **user name**" and " **password**": "super", please change it promptly after logging)

Add device

Click **【Setting】** > **【Admin config】** in the right side of software toolbar, add, edit, delete, search device by pop-up device editor. after adding device name, device port, IP address, user name, password, click **【save】** to close the device management interface.

Start device

Double click the device name in device list, pop-up all the channels of it, then **【double click】** the selected channel to display video in preview zone. if need to display all channels, drag the device name to preview zone directly.



Client software login interface

Declaration

- The quick operation manual only describes the basic operations, more details please refer to E-user manual in the CD;
- We reserve the rights of final interpretation on doubts and disputes in the manuals
- The manual is used for multiple models as a reference, specific operations of each model can't be listed here. If questions, welcome to contact our customer service department, thank you!