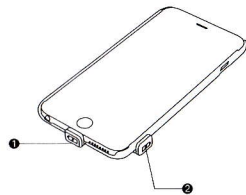
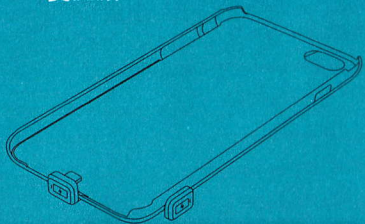


XX AIYOWI
爱优威

背夾移動電源
Mobile power supply



① 充電插口 ② 充電插口
1 Power indicator light 2 Power output socket

● 產品參數 / product parameters

PD-01(4.7):

類 型: 聚合物鋰電池

電池容量: 1500mAh

輸入端口: i5接口

輸出端口: i5接口

輸入電壓: DC 5V

輸出電壓: DC 5V

輸入電流: 1000mA

輸出電流: 1000mA

體 積: L140*W69.3*H11.2mm

重 量: 58g

PD-01(5.5):

類 型: 聚合物鋰電池

電池容量: 2000mAh

輸入端口: i5接口

輸出端口: i5接口

輸入電壓: DC 5V

輸出電壓: DC 5V

輸入電流: 1000mA

輸出電流: 1000mA

體 積: L164.8*W85*H17mm

重 量: 80g

關機電壓: 當背夾電池電壓低於3V時, 關閉輸出

PD-01(4.7):

Type Polymer lithium battery

Capacity: 1500mAh

The input port: i5 interface

The output port: i5 interface

Input voltage: DC 5V

output voltage: DC 5V

Input current: 1000mA

Output current: 1000mA

Volume: L140*W69.3*H11.2mm

Weight: 58g

PD-01(5.5):

Type Polymer lithium battery

Capacity: 2000mAh

The input port: i5 interface

The output port: i5 interface

Input voltage: DC 5V

output voltage: DC 5V

Input current: 1000mA

Output current: 1000mA

Volume: L164.8*W85*H17mm

Weight: 80g

● 溫馨提示

請仔細閱讀使用說明書, 按照操作手冊中的指引正確的使用產品, 讓您更方便、快捷的熟悉產品。

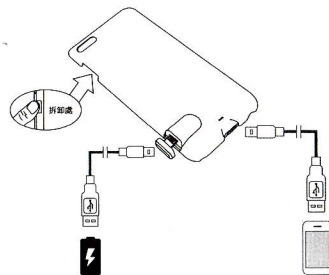
本手冊所示圖片可能有點出入, 一切以產品實物為準!

Warm prompt:

Please carefully read the instruction manual and use product correctly based on the instruction manual so that you can be familiar with the product more convenient and quick!

Perhaps there is small difference between the photo and the actual product, so the detailed information is subject to actual product.

● 使用說明 / operating instruction



1. 放電 (給手機充電)

把手機裝到手機背夾裏面, 把轉接頭從背夾拔出來插入到手機的充電孔, 給手機充電, 此時背夾后面的綠燈會亮, 并閃爍, 閃一下表示還有1/3左右電量, 連續閃爍2次表示有2/3左右的電量, 連續閃爍3次表示有100%左右的電量。

(注: 當手機充滿後會自動關閉輸出, 需要再次給手機充電時, 請重新插拔一次轉接頭)

1. Discharging (Charge the cellphone)

Put the phone inside the back up battery then pull out the connector and insert it to the port of charging. at this time, the blue light of back up battery will light up and flash. when the light flash one time, which means there is about 25% power left, two times means about 50% left and three times means about 75% left and four times means the power is 100% (Notice: when the cellphone is full. the back up battery will automatically shut off. when you need to recharge. please pull out and insert the coonector again)

Protection + Power

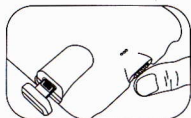
PD-01

2. 充電

當背夾沒有電時，把市電充電器插頭插到背夾右邊的插口，給手機和背夾充電。充電順序是優先給手機充電，手機充滿后再給背夾充電。此時背夾后面的紅燈會亮，并閃爍，閃一下表示還有1/3左右電量，連續閃爍2次表示有2/3左右的電量，連續閃爍3次表示快充滿，當充滿電時，綠燈長亮。

2. Charging

Charging, When the power of back up battery is out off, please insert the charger into the port in the right side of back up battery to charge cellphone and battery. the order of charging is the cellphone comes first, when it is full, then it turns to the battery, at this time, the red light on the back of battery will on, flashing. first time mean about 1/3 power left, two times mean 2/3 power left, three times continuously mean about 100% power left. when the battery and cellphone charged full, the green light will last.



用手觸摸底部會顯示電量

Showing the power by touching in the bottom

● 特點:

1. 迷你精巧，便于攜帶：是同等規格鉛酸電池體積的1/10，重量僅有58g，是日常生活必備品。
2. 本款產品設計成保護套背夾式電池，可以完好的保護您的手機。

Characteristics:

Attractive and exquisite, easy to carry, it only account of the 1/10 of lead acid batter with same size, which only weight 58 g essential product for daily life. This product is designed as protective case back up battery, which can protect your cellphone well.

● 注意事項:

1. 中轉接頭一定要匹配，本產品為i5接頭，背夾保護套，僅限于iphone6使用。
2. 請勿將本產品投入火中或置于其他過熱環境中。
3. 請勿拆解本產品或嘗試對其進行任何形式的維修或改動。
4. 購買人購買本產品供未成年人使用前，應向其提供詳細說明及警示信息。
5. 所有產品出廠前均通過了嚴格的質量保證檢驗，如您發現產品過熱，出現異味、變形等，請立即停止使用，并聯絡制造商或代理商。

Notice

This product is for iphone 5 connector. it is only for iphone6. Do not throw the product in the fire or placed in any overheat environment. Do not disassemble the product or the any form of maintenance and modifications. The buyer should offer the detailed instructions and warnings before the buyer buy the product for the minors. All products are passed the strict quality inspection and If you find the product overheating, peculiar smell, deformation, etc. Please stop using immediately and contact with manufacturers agents

本產品為客戶提供自購買之日起12個月內的保修服務

保障條件：需要保修服務時，請出示本保修卡，并請詳盡填寫相關內容。本公司向產品用戶提供從產品購買之日起12個月的保質期。

保修範圍:

1. 在正常使用的狀態下出現產品質量問題。
 2. 如因操作失誤造成對產品的損害，不在保修範圍。
 3. 自行拆機后，不予保修。
 4. 標貼撕毀的機器，不予保修。
- 不在保修範圍內的產品，我司可提供維修服務，維修費用需由客戶承擔。

Warranty Condition: When you need warranty service, please show your warranty card, and write down details. Our company offer 12 months warranty service from the date of purchasing.

Warranty Range:

1. Quality problems under normal use.
 2. The damage caused by improper operation is not covered by warranty
 3. The product disassembled by the customer, no warranty
 4. No labels on the product, no warranty
- If product is not in above warranty range, our company can provide related service, in the circumstances of payment.

● 保修卡

產品型號/Model: _____

購買日期/Purchase dates: _____

客戶姓名/Customer Name: _____

出廠編號/Serial number: _____

維修日期/Maintenance dates: _____

聯系電話/Telephone: _____

銷售單位/Seller: _____

產品異常現象描述/Description of product anomalies: _____