

Table of content

Table of content

Page 2: Quick Start Guide

Page 3: Remote Control Setup

Page 4: Features & Functions

Page 5: Power & Sound

Page 6: Video & Audio

Page 7: TV Output Setting

Page 8: TV Output Setting

Page 9: DVD/TV Operation

Page 10: Additional Features

USER MANUAL



Table of content

Table of content.....	1
Keys & ports diagram of the unit.....	2-3
Remote controller function diagram.....	4
Basic Function Operation.....	5-7
Function-setting.....	8-9
Ways to play the discs.....	10-13
TV System Setting.....	14
TV programs.....	15
DVD/TV Specifications.....	16
Additional Function blank.....	17

Keys & ports diagram of the unit



1. OPEN

Press this key to open the disc cover & take out the disc inside.

2. 3. (VOL- VOL+)

Press this key to decrease/increase volume.

4. MENU

Press key to enter TV menu.

5. 6. (CH+ CH-)

Press this key to channel decreasing/increasing key.

7. POWER

Press this key can be achieved rather than pressing the power switch button machine.

8.9.10.12. (▲ ▼ ◀ ▶) Direction keys

Press this key to confirm your selected items when selecting various functions in the menu.

11. ENTER

Press this key to confirm when selecting an option in the menu.

13. (◀ ▶)

Press this key once entering playing mode ,press the key for the second time to pause.

14. SETUP

Press this key to enter the main menu setting .

15.16. (◀▶ ▶▶)

Press this key to fast backward / forward searching the pictures.

17. STOP (■)

Press this key the button to stop play.

18. INPUT (MODE)

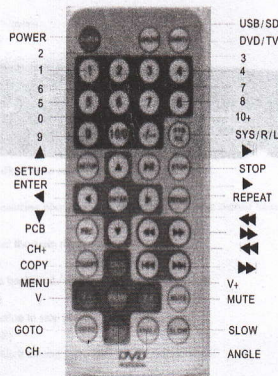
Press this key for switch among three modes of DVD,TV&AV.

Keys & ports diagram of the unit

- 1.Power socket:the adaptor of this unit is DC 12V.
- 2.Earphone jack: use to connect earphone.After earphone inserted ,the built-in speaker will be automatically off.
- 3.GAME:To connect joystick
- 4.Unit Power Switch: toggle the switch to turn on or turn off the power of the unit .
- 5.SD/MMC card port.
- 6.USB: To connect USB device.
- 7.Audio/Video in jack
- 8.Audio/Video Out jack.
- 9.Antenna interface:To connect TV antenna.



Remote controller function diagram



POWER:Key for Unit Power On& off
MENU:TFT menu

Basic Function Operation

Operation one :before operation

- push the cover-ejecting button to open the cover of this unit
- connect to power
- toggle ON the power switch of the unit & press STANDBY or POWER key on the remote controller to turn on the unit.
- For tuning the VOLUME(Not for earphone volume),adjust the knob of VOLUME.
- When connecting the unit to TV set ,the video of TV set should be set at AV mode.

Operation Two : put in discs

- press OPEN to open disc cover
- take the disc by the rim to latch the disc lightly onto the pivot.
- close the disc lid until hearing a click sound

Operation Three : TFT Picture adjustment

Press MENU key on the unit to display TFT pictures Adjustment menu.Select each item from left to right by pressing menu; use CH- or CH+ to adjust the various parameters from left to right or from right left.

Operation Four :Play & Pause

- after loading the disc, the unit will be automatically playing
- Press () key to pause or halt playing
- Press () key again to resume playing

Operation Five: Character Display in the Disc

Press the OSD key to display disc Content information & the related operation reminder.

Press OSD key the second time to continue displaying the related information until to the end. Press it again to exit the function.

Note: the language version setting for Disc information character can be done through DVD menu setup.

Operation Six : DVD Disc Menu Playing

Some of DVD disc recorded with information of TITLE or SUBTITLE menu .press TITLE key to show menu on screen .press to next page ,then select by digit or direction key .press MENU once to return to root menu .Press TITLE key to return to title menu.

Operation Seven : PBC playing

During playing SVCD ,VCD2.0with PBC functions,you can enjoy a simple PBC interactive function.

Operation Eight: Playing by digit key entering directly

When finished reading disc,you can play by digit key entering directly.

- the sequence Number is less than 10(Press Number key from 1 to 9)
- If the sequence Number is more than .10 Press 10+key (Press 10+key continuously to change to 20+,30+... etc.)& then press the Number key from 0 to 9 to select.

Operation Nine : Using Infrared remote controller

Put your wireless headphone on your head ,turn on the power & then adjust the knob to suitable volume .Open the TFT system menu ,select &adjust to EARPHONE by UP item ;if the wireless infrared headphone working, the sound from the unit itself will be disappeared.

Operation Ten:USB 's Port's interface & its operation

USB's Port's interface is on the right side of the unit & can be connected with USB flash disc or memory etc.

Operation method:

- Insert outside USB flash dish or memory into the port's interface of this unit & close the disc lid without any disc inside .The system of this unit shall automatically open the USB's files in MP3 menu format .Open the USB flash disc or memory files by pressing the USB /DVD key on the unit panel if No disc inside the mechanism.

Note :this unit can only detect AV documents

- Press keys on remote controller to select the music logo .press enter to open the audio file .Press CH-,CH+keys to select different audio files for playing
- Press keys on remote controller to select the camera logo .press ENTER to open the picture files .press CH-,CH+keys to select different picture .press ENTER key to magnify & press key at this time to make the picture turning up or down .

While press ▼ key to make the picture turning left or right: Press ◀ key to make the picture turning for a 90 degree anti-clockwise; press ▶ key to make the picture turning for a 90 degree clockwise.

4. Press ▶ ◀ keys to display previous or next picture under magnifying display state. press ◀ ▶

Key to display the pictures or next picture under magnifying display state,

5. Press ▶ ◀ keys on remote controller to select AV playing ,Press ▶ then press ENTER to open video files ,Press ◀ ▶ can select play last or next video document,

Press ◀ ▶ to play the video forward and backward quicker.

6. Press ■ key to resume from magnifying state to menu state

Operation eleven :MSD card connections & operation

SMD card is at the right front of the unit.

Operation methods:

1. Insert the SMD card, follow the arrow directions ,the side with a arrow diagram should be on the topside.

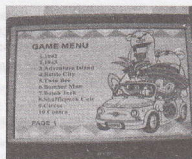
Press the USB /DVD keys turn to reading card function ,the unit will read the MP3 ,digital pictures(jpg) ,and the video document (MPEG) automatically inside the SMD card.

2. After reading the data inside the SMD card when it enters the MP3 playing Mode if there are pictures or JPG document and video document in the SMD card ,the cursor of the video playing and the music camera turn to "Retangular" otherwise no "Retangular" mark...press ▶ ◀ to select MP3 ,camera (JPG) or video document ▲ ▼ in the file area ,then press ▶ to move the cursor to the right sub -document clips ,Press ▲ ▼ to select the file you wanted to enjoy using ◀ ▶ to skip over the document ,when video document are playing ,using ◀ ▶ can make a change between playing and a pause ,and press ■ to stop playing.

Attention : the SMD card shouldn't use in the same time with the USB card.

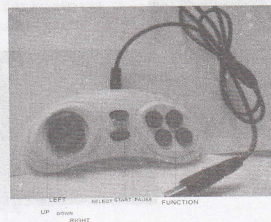
The game operation

1. Press the button "DVD" by remote controller ,switching to GAME mode.
2. Insert the game controller into "GAME" plugs
3. Put the game disc in ,then the loading machines will read the disc as follows.



4. Press the ◀ ▶ key to select a directory.

5. the number of keys on the remote control can choose a game ,click the button game controller confirmed to enter the game.
6. If you want to play the game in the other game ,will be chosen and confirmed by the bond at the same time may withdraw from the game ,and then choose other game...
7. game picture follow:

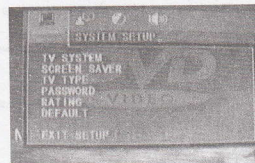


Function-setting

Function-setting One: DVD menu setup to setup the following DVD player functions according to the disc recording information ,outer connection equipent to attain best playing effect perss SETUP key to enter into DVD system setting selective interface

(1) SYSTEM SETUP

TV SYSTEM
AUTO PLAY
TV TYPE
PASSWORD
RATING
DEFAULT



- A. TV SYSTEM : NTSC , PAL60, PAL, AUTO
- B. AUTO PLAY : can be activated or shut down when Not watching program for a longer time ,it can be set as activated after input discs the unit enter auto playing or selecting playing form
- C. TV TYPE : 1) 4:3 panorama view ,selected when connect this unit to common TV set, The

wide screen picture is shown on this entire screen but there are some parts to be cut off, 2) 4:3 mail box, select when connect this unit to common TV set, the wide screen picture is shown on the screen with two black films respectively on top & bottom of the screen. 3) 16:9 wide screen, select when connect this unit to wide screen TV set.

- D. **PASSWORD** : can set password on various discs, Original password 0000.
E. **GRADE** : None A grade, kids, No limit it can be set restrictions at different grades according to different discs.

(2) LANGUAGE SETUP

OSD LANGUAGE
AUDIO LANG
SUBTITLE LANG
MENU LANG



- A. **OSD LANGUAGE** : English, Chinese, German, Spanish, Russian.
B. **AUDIO LANGUAGE** : English, Chinese, Russian, French, Spanish, Portuguese, Latin, German.
C. **SUBTITLE LANGUAGE** : English, Chinese, Russian, French, Spanish, Portuguese, German.
D. **MENU LANGUAGE** : English, Chinese, Russian, French, Spanish, Portuguese, German, Latin

- (3) Audio setup
AUDIO SETUP
KEY

(4) VIDEO SETUP

BRIGHTNESS
CONTRAST
HUE
SATURATION
SHARPNESS



- A. **BRIGHTNESS** : It can adjust the video brightness level.
B. **CONTRAST** : It can adjust the video contrast level.
C. **HUE** : It can adjust the video hue level.

- D. **SATURATION** : It can adjust the video saturation level.
E. **SHARPNESS** : It can adjust the video sharpness level.

(5) SPEAKER SETUP

DOWNMIX LT/RT STEREO VSS
FRONT LARGE SMALL



(6) DIGITAL SETUP

OP MODE
DYNAMIC RANGE
EXIT SETUP

- a. **OP MODE** : Line output jacks, RF adjustment
b. **DYNAMIC** : It can adjust Dolby dynamic range
c. **Left + Right** : Stereo, Left channel, Right channel mixed channel.
d. **EXIT SETUP** : exit setup menu.

Ways to play the discs

Audio Language Selection

When playing DVD, MP4 discs, press **AUDIO** key to select different audio languages

Fast Playing

During playing discs, it can play fast forward or fast backward to search certain interested content.

- Press **▶▶** key to enable fast forward
Press **▶▶** key one time, it shows loop mode.

- Press **◀◀** key to enable fast backward
Press **◀◀** key one time, it shows loop mode.

Repeat playing whole disc
DVD disc

It has **TITLE**, **CHAPTER** repeated function

1. Chapter repeat

Press REPEAT key to display CHAPTER REPEAT in screen

2. TITLE REPEAT :

Press REPEAT key to display TITLE REPEAT on screen

3. Cancel REPEAT

Press REPEAT key to display CANCEL REPEAT on screen

*Super DVD,VCD,CD discs

Following below steps ,it can repeat Single song ,Whole Disc Repeat ,For Super VCD,VCD2.0,VCD3.0,it can realize the repeat only if PBC can directly repeat single song or whole disc.

Disable PBC Function

*At stop mode ,directly press digital / numeral keys to select songs

*Press MENU key ,PBC OFF will be shown on the screen

1.Single song repeat

Press REPEAT key to display SINGLE SONG REPEAT on screen & repeat playing being played song.

2. Whole Disc Repeat

Press REPEAT key to display WHOLE DISC REPEAT on screen & repeat playing being played song.

3. Cancel Repeat

Press REPEAT key again to display CANCEL REPEAT on screen.

Next, press ENTER for search playing ,if input incorrectly ,you can press SEARCH key to exit searching mode & input again

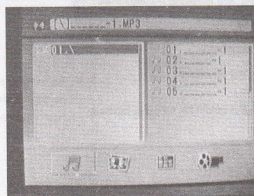
Zoom Functions (is valid for DVD, SVCD ,VCD discs)

Press ZOOM key to enjoy the magnified dynamic or static picture

1. when playing discs ,press ZOOM key 1st time to to magnify double size
2. Press ZOOM key the 2nd time to magnify triple size
3. Press ZOOM key the 3rd time to magnify four times size
4. Press ZOOM key the 4th time to magnify 1/2 time's size
5. Press ZOOM key the 5th time to magnify 1/3 time's size
6. Press ZOOM key the 6th time to magnify 1/4 time's size
7. Press ZOOM key the 7th time to resume to original picture

Playing MP3

1. Insert MP3 disc ,when the unit finishes searching ,MP3 main menu will be displayed.



2. Press ◀▶ key to move the cursor to file area ,press ENTER to select or confirm songs

3. Select MP3 Directory

Press ▲▼ key to move the cursor to Directory area ,you can also directly select the directory by pressing digit or number keys,or you can press ◀▶ key to move the cursor to MP3 Directory & then press ENTER key to select or confirm the Directory ,following the selection ,the unit will begin to play the 1st enlised song in the MP3 Directory
Steps off song selection is the same as step 2.Above

Playing JPG Pictures

Press ◀▶ key to move the cursor to file area ,Press ▲▼ keys to select the picture & then press ENTER key to play the JPG picture ,Continue pressing ◀▶ keys to play previous or next picture ,Press RETURN key to return to main menu ,Move the cursor to Directory area to select directory or its items.

TV System Setting

Switch to TV mode ,press the LCD MENU key to open the system menu.

1. LCD picture parameter setting.

A. A.BRIGHT BRIGHT

Press the (◀) or (▶) key to adjust the brightness
(Adjustment range 0-100)

B. CONTRAST

Press the (◀) or (▶) key to adjust the contrast.
(Adjustment range 0-100)



C. COLOR

Press the (◀) or (▶) key to adjust the color.
(Adjustment range 0-100)



1. Option setting
- A. NORMAL

It is the screen turning key.

B. ZOOM

Press ZOOM key to enjoy the magnified dynamic or static picture.

C. ENGLISH

Language setting

2. System setting

A.S-ROLOC

Press the (◀) or (▶) key to set picture system

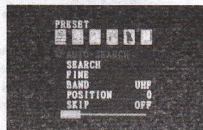
(PAL,NTSC,SECAM and AUTO)



B. S-SYS

Press the (◀) or (▶) key to set audio system.

(BG,DK,I.M.and L.)



3. Frequency Search Setting

A. AUTO-SEARCH

Press the (◀) or (▶) key to search the TV programs automatically.

B. SEARCH

Press the (◀) or (▶) key to search the TV programs semi automatically.

C. FINE

Press the (◀) or (▶) key to adjust the TV programs finely to realize optimal image and sound.

D. BAND

Press the (◀) or (▶) key to set three bands: VHF L/VHF H/UHF

E. POSITION

Press the (◀) or (▶) key to select the channel number.

F. SKIP

Press the (◀) or (▶) key to set the channel skip to NO/OFF.



Before TV programs' reception-

1. TV Reception Antenna or cable TV
2. Press MODE key to switch to TV mode

3. Volume adjustment in accordance with DVD mode

Auto searching channels

1. Press AUTO key ,this unit shall automatically search the TV channels or you can choose to open the SETUP sub-menu to select AUTO search & then press (CH+) key
2. Having searched for a few minutes, it shall finish the searching .The channels searched shall be automatically saved in the memory of the unit .
3. When using Antenna rod,adjust the length ,directions & angles to attain the best reception effect.

Channel Selection

1. Press digit keys 1-10 to select channels from 1 to 10;for channels more than 10,you can press 10+key & then input the channel Number by Pressing the digit keys.
2. Press CH+ or CH- keys to select previous or next channel

Trouble-shooting Analysis & solution

Should you meet following problems during using this product,you could refer to this chapter for a possible solution

*No sound

- 1.Press check if the connections of this unit is firmly enough;
- 2.When using an earphone,Please check if the earphone potentiometer volume is set at a minimum position
- 3.Please make sure your TV Set or Amplifier's operation is correct & normal working
- 4.At TV Mode, Please check if the audio system is correct

*No picture

- 1.Please check if the power of this unit is set to ON position
- 2.Please check if the connections of this unit is firmly enough;
- 3.Please confirm if your TV set is correctly set (when connected with TV set)

*Picture Rolling or No color (when connected with TV set)

The color system of this unit may Not be set in conformity with that of your TV's.

*Discs Not playing

- 1.Improper placement of inside disc,Please check & put it in properly
- 2.Put the disc into the tray with sticker or label side Up
- 3.There are dirt on the disc, Please clean it

* Remote controller Not working

- 1.Take away the barrier between the remote controller & that of this unit
- 2.Point the remote controller to the sensor window of this unit
- 3.Please check if the battery of the remote controller needs to be replaced

*TV reception quality is Not good enough

- 1.For wireless receptions, Please adjust the length ,directions & angles to attain the better reception
- 2.For cable receptions,Please make sure the outer Antenna is properly connected
- 3.When TV signals are weak,the pictures on screen are Not stable & may be accompanide snow & this is normal

DVD / TV Specifications

Laser wavelength	Wavelength 650NM/780NM	
VIDEO SYSTEM	PAL/AUTO/NTSC	
AUDIO RESPONSE	20Hz 20KHZ	
AUDIO S/N RATIO	80dB	
FREQUENCY DISTORTION+NOISE	-70dB	
CHENNAL ISOLATION	80dB	
DYNAMIC RANGE	80dB	
OUTPUT	AUDIO OUT (ANOLOG)	OUTPUT ELECTRICAL LEVEL: 2Vp-p,load resistance: 10K
	VIDEO OUTPUT STERMINAL OUTPUT:(NO)	Output electrical level:1vp-p, Load resistance:75 unbalanced negative output electrical level,Luminance(Y):1vp-p, Load reistance:75
Power	AC100 240V,DC input:12v 2A output	
Working Temperature	5-35degree celsius	
Consumption	>18w	
Dimension	214*168*40mm	
Unit net weight	0.914kg	
TV reception specifications		
TV system	PAL NTSC SECAM OPTIONAL ALL SYSETEM	
RECEIVING CHANNEL	LHF1-5,VHF6-12,UHF13-69,CATV	
MONITOR specifications		
Monitor	9.5" TFT LCD display	
Monitor pixel	480000pixels,800*600* RGB(dots)	
Resolution	1440000dots	
Screen Size Ratio	16:9	
Display Area	155(w)*66(H)mm	
Audio Video connecting wires/leads	1 piece	
Remote controller	1 piece	
User's controller	1 piece	
Adaptor (12V DC)	1 piece	
Antenna Converter	1 piece	
Joystick	1 piece	
Game Disc	1 piece	