



PORTABLE MULTIMEDIA DVD & LCD TV

USER MANUAL



To customer:

Thanks for buying and choosing this branded Portable DVD, please check if all the accessories are complete when open carton. Please read this user manual carefully before connecting the parts and putting through the power, for make well use of all the function of the unit.

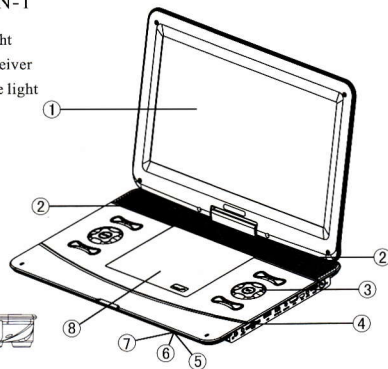
NOTICE ITEMS

- Please read this user manual carefully when using the unit at the first time.
- For the high voltage results in danger, be sure not to maintain it personally, all the adjustment and maintain works should be done by special person.
- The adapter for the unit must be match with the adapter on the sign of nameplate.
- The power for the socket can't be over loading, and it should be put in the place which isn't trampled easily. Don't put goods on the power line.
- Don't put the unit near sofa and curtain, stuffiness and sun straight darkish places, and avoid the unit declining and stricking.
- Take off the power line from the socket, then can clean it. Don't use the thinner and other cleanser, it is ok for just using soft cloth.
- Don't use the broken, transmutative or paper sticking on the disc. Pick out the disc when you don't display.
- When lightning storm or don't use the unit, should take off the power from the power socket.

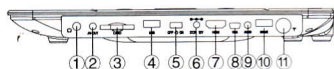


APPEARANCE INSTRUCTION-1

- 1) TFT LCD
- 2) Speaker
- 3) Control panel
- 4) Interface jack
- 5) Power indicator light
- 6) Remote control receiver
- 7) Charging indicate light
- 8) DVD disc cover



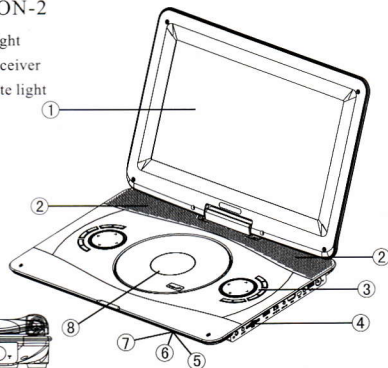
Right flank jack:



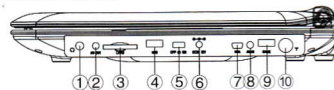
- ① Earphone output
- ③ Card insert
- ⑤ OFF/ON
- ⑦ HDMI jack
- ⑨ AV input
- ⑪ CATV interface
- ② AV output
- ④ USB jack
- ⑥ Power port
- ⑧ VGA jack
- ⑩ GAME handle jack

APPEARANCE INSTRUCTION-2

- 1) TFT LCD
- 2) Speaker
- 3) Control panel
- 4) Interface jack
- 5) Power indicator light
- 6) Remote control receiver
- 7) Charging indicate light
- 8) DVD disc cover



Right flank jack:



- ① Earphone output
- ③ Card insert
- ⑤ OFF/ON
- ⑦ VGA jack
- ⑨ GAME handle jack
- ② AV output
- ④ USB jack
- ⑥ Power input port
- ⑧ AV input
- ⑩ CATV interface

THE INSTRUCTION OF CONTROL PANEL

LCD ON/OFF	Screen power supply switch button
INPUT	INPUT signal conversion key (eg. from TV to DVD)
CH-/CH+	Channel depression / increase key
VOL-/VOL+	Volume depression / increase key
MENU	press this button can enter or exit the menu interface
SEARCH	In the "TV" or "FM" state, Press this button to automatically search program
AUDIO	For registering multi-language DISC, press the button to choose language voice when playing
SETUP	Press this button can enter or exit the DVD menu interface
SD/DVD	Press this button to choose DVD, USB or CARD playing
◀/▶/▲/▼	Menu choice or adjustment key
OK	Enter key (This button during playback with pause / play functions)
⏮/⏭	Speedy front/back key
⏮/⏭	Skip front or backward to one {chapter/title} for playing
MUTE	Press this button to enter or exit the mute state
⏸	Press this button to temporarily stop playing

CHARGE INDICATION OF LITHIUM BATTERY

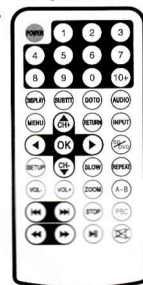
Battery box charging indication:

- When power off, put the corresponded adapter insert to AC100-240V, the other connect to the unit, lithium battery will start to be charged automatically, the charging indication is red.
- Finish the charging, charging indication become green.



USE OF REMOTE CONTROL

- POWER:** Press this button to open the unit, press the button again to close power supply.
- Numeric key (0-9) and 10+ key:** When the channel or song count is 1 bit just need to press the homologous key, when the channel count is 2 bits, should press 10+ key first, the screen display -- or ---, then press the homologous key.
- DISPLAY key:** Press this button can display or conceal the channel number.
- SUBTITLE key:** Press this button to choose language title when playing multi language title disc.
- GOTO key:** Press this button to select when playing time.
- AUDIO key:** For registering multi-language DISC, press this button to choose language voice when playing.
- MENU key:** Enter the menu
- ▲/▼/▶/◀ key:** Direction choice key
- OK key:** Enter key
- CH+/CH- (channel choice key):** Press the CH+ key, the channel count is changed increase by degrees. Press the CH- key the channel count is changed by depression.
- VOL+/VOL- (volume adjustment key):** Press VOL+ key, the volume changed increase by degrees; Press VOL- key, the volume changed by depression
- RETURN key:** In TV status, press this button to return to the front channel; In DVD status, press this button to return to the menu playing.
- INPUT key:** Press this button to switch one by one at TV/AV/DVD playing.
- SD/DVD key:** Press this button to display DISC, SD/MMC or USB item.



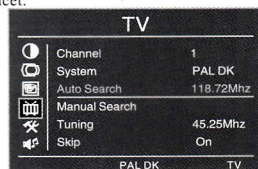
- **SLOW key:** Press the button to circle as follows: {SF1/2, SF1/4, SF1/8, SF1/16, PLAY ▶} for slow playing.
- **ZOOM key:** Press the button to choose the key as follows: {zoom 2, zoom 3, zoom 4, zoom: [off]} to repeat.
- **REPEAT key:** Press the button on PBC [OFF] status to circle as follows: {repeat: [chapter], repeat: [title], repeat: [all], repeat: [off]} for repeating play.
- **A-B key:** Press the button to circle as follows: {repeat A-, repeat A-B, repeat: [off]} for choosed segment repeating play.
- **PBC key:** Press the button to switch in turn on PBC: [ON] or PBC: [OFF] status.
- **STOP key:** Press this button one time to enter into the status of allowing stop, press this button again to enter into the stopping status, and press **▶** key enter into sequential playing.
- **◀/▶ key:** Press the button to skip front and backwards to one {chapter/title} for sequential playing.
- **▶▶ key:** Press the button to circle as follows: {▶▶2, ▶▶4, ▶▶8, ▶▶16, ▶▶32, play ▶} for playing.
- **◀◀ key:** Press the button to circle as follows: {◀◀2, ◀◀4, ◀◀8, ◀◀16, ◀◀32, play ▶} for playing.
- **⏸ key:** Press the button to pause or play.
- **🔊 key:** Press this button to make sound off, press the button again or press the volume increase /degression key, the sound gets right.

Attention

- 1) If **[🔊]** show on the screen when operating, which indicate the operation is invalid.
- 2) Please make the remote level to the tv infrared receiver when operating.
- 3) Don't stress, decline, bemoist or disconnect the remote control.

TV PLAYING

1. When power off, put the corresponded adapter insert to AC100-240V, the other connect to the TV faucet
 2. Put through the connection-peg of TV set with the antenna faucet.
 3. Put through the power, press "INPUT" button to display the menu, Press "▲/▼" on the remote control key or the machine on the "◀/▶" button to select "TV", press the "OK" button to confirm that.
 4. Auto tuning (when it's a new place, please research the channel again before you watch TV): In the "TV" state, press to the "SEARCH" button to enter the main menu, then press the "▶" button (or press remote control on the "▶" button), System start automatic station search, the screen display as right:
- After search, the system can auto switch to the TV status, press CH+▲ or CH-▼ key again to watch TV. (**Attention:** In the process of researching channels, you can press "MENU" key to interrupt tuning and return TV state.)



AV PLAYING

1. Put through the power, connect the AV connection line as follows:
2. Press the INPUT key to enter into the AV status.



DVD AUDIO OUTPUT

1. Put through the power, connect the AV connection line as follows:
2. Press the INPUT key to enter into the DVD status.

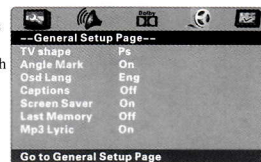
DVD PLAYING

1. Put through the power and put the DVD disc on tray
2. Press INPUT key to switch to the DVD status, it can play automatically.

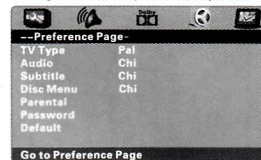
SETUP MENU

- Press SETUP key to enter into menu. (Note: System enters prior to the first main item.)
- Press ◀/▶ key (machine is the "◀/▶" key) to choose each main item left / right.
- After choosing the main item, press ▲/▼ key (machine is the "▲/▼" key) to enter and choose sub-item of the selected one up/down.
- After choosing the sub-item needed to adjust, press ▶ key (machine is the "▶" key) to enter into the next menu of this item, in the project selected state press "OK" to confirm the selection.
- Press ◀ key (machine is the "◀" key) to return to the previous menu;
- After adjustment, Press SETUP key to quit menu directly.

Remark: This unit has a parental control, Original code: 1369, you must first remove the disc during playback, "Preference Page" will be activated;



※ The pictures in the product manual just serve as a guideline, all are subject to our actual products.



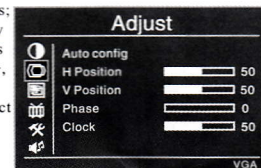
FM FUNCTION(Optional)

1. Connecting external antenna or cupula antenna in our accessories to antenna jack in our unit.
 2. Press "INPUT" key to enter into menu, Press the "▲/▼" key (the machine "◀/▶" key) on the remote control to select the FM items, press the "OK" key to enter the "FM":
 3. Auto search: (please search channels again when you listen programs in a new place) press the ▼ key (the machine "▶" key) to select [Auto search], the menu shown at right:
- ▶ Press the "▶" key on the remote control (the machine "▶" key) to enter a sub menu, press "▲" key (the machine "◀" key) to select "OK", then press the "▶" key (the machine "▶" key) after automatic station search;
- ▶ After search, the system can auto switch to the FM status, press "◀/▶" key (the machine "◀/▶" key) can adjust the channels.
- Attention:** In the process of researching channels, you can press "MENU" key to interrupt tuning and return TV state.



CONNECTED TO THE COMPUTER (Some models apply)

- ▶ Press the "INPUT" key to enter into VGA mode; VGA cable connected to the native VGA interface with the computer's VGA output port, and tighten the screws;
- ▶ Press "MENU" button to enter the main menu, press "▼" key (the machine "▶" key) to select the <Adjust> project, press the "▶" key (the machine "▶" key) to select <Auto Config>, press the "▶" key (the machine "▶" key) to enter the sub-menu, then press "▲" key (the machine "◀" key) to select "OK", press the "▶" key (the machine "▶" key), the screen will automatically adjust to the appropriate size, such as the right:



CARD OR U DISC PLAYING

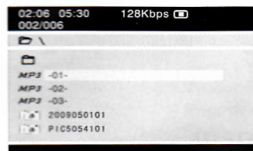
Description of Reading Card

Have the function of playing SD, MS, MMC and U disc. Include files:

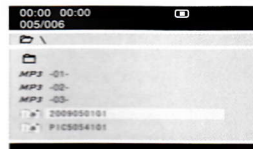
- 1) DVD-AUDIO and DVD-VIDEO digital format: Compact digital audio and video(dynamic picture).
- 2) Super VCD digital format: MPEG2 compact digital audio and video (dynamic picture).
- 3) MPEG1 digital format: MPEG1 compact digital audio and video (dynamic picture), like CD2.0, VCD1.1, VCD1.0, DVCD.
- 4) Digital audio format: like CD-DA, HDCD.
- 5) MP3/JPEG format: MP3 compact audio and JPEG rest picture.
- 6) WMA: compact digital audio.

Playing instruction:

1. Put through the power, connect well of SD, MMC cards and U disc.
2. Press "INPUT" key to enter into menu, press the "▲/▼" key on the remote control to select the DVD items, press the "SD/DVD" key will automatically detect the U disk or memory card, and automatically play the stored documents;
3. Press the "STOP" key on the remote control to stop playing, and return to the main menu. the menu as follows:



- ▶ Press the "▲/▼" key on the remote control to choose each folder up/down; when playing, need to press the "STOP" key to return to the root directory of U disk or memory card;
- ▶ Press "OK" button to confirm the contents of the selected projects will begin playing;
- ▶ When playing, press the "▶||" key to pause playback;
- ▶ When viewing a picture, press "◀/▶" button on the remote control to rotate the picture 90 degrees;
- ▶ Press the "STOP" key to return to the playing interface, screen display as follows:



Attention:

- 1) When playing cards, only play the content you have stored, if no content, the corresponding item is not optional.
- 2) when play the songs that stored in the memory card, you can press the "voice +/-" button to adjust volumes.

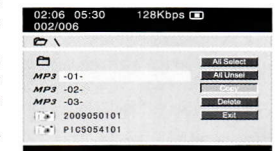
COPY FUNCTION(just for CD disc)

1. When read CD disc, press "SUBTIT" key on remote control, you can enter into COPY menu, interface display as follows:
2. Press "▲/▼/◀/▶" key on remote control to choose file you want to copy, press "OK" key to confirm the file, and then choose "START" item, press "OK" key to start to copy.
3. After copy, press "SUBTIT" key on remote control to quit copy menu.

Options		Track	
Speed	Normal	track01	04:44
Bitrate	128Kbps	track02	04:54
Create CD	Yes	track03	04:58
Device	None	track04	04:15
SUMMARY		track05	05:01
Selected Track		track06	04:25
Selected Time		track07	04:32
Start	Exit	Select all	Select none

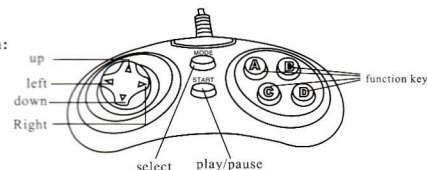
COPY THE FILES IN THE MEMORY

1. When playing a U disk or memory Card files, press "SUBTIT" key on remote control, you can enter into COPY menu, interface display as follows:
2. Press "▲/▼" key on remote control to choose file you want to copy, press "OK" key to confirm the file, press the "▶" key to enter the menu on the right side of the "copy", press "OK" key to start to copy.
3. After copy, the system will automatically exit the copy menu.



GAME OPERATION

1. Game joystick instruction:



2. Operation instruction:

- Connect power supply and game joystick.
- Lay game disc or insert CARD or U disc with game content put through the power, press INPUT key to enter into DVD status, press SD/DVD key to choose DISC, CARD or USB playing, then press OK key to play the game.
- If there are several game pages when playing game disc, press ◀/▶ key on remote control to choose each page front/back, then press ▲/▼ (0-9 key, 10+) key to choose corresponding game and press OK key to play the game..
- After entering into game, press MODE key to choose single game or double game.
- Press START key to start the game.
- Press ▲/▼/◀/▶ key to control the move direction. (Note: concrete function according to the content of the game.)
- Press ▲/B/C/D key to choose different function. (Note: concrete function according to the content of the game.)
- When playing the game, you can press START key to pause this game, repress this key to continue the game.
- Press MODE key and A key at one time to end the game.

REPLY FOR USUAL PROBLEM

1. TV no picture or sound?
 - AC adapter is not compatible;
 - Using the adapter is not allowed;
 - The power is off or the remote control is off
2. TV no sound?
 - If the Volume is off
 - Audio system is not correct
3. TV no picture?
 - Channel choice is not correct
 - It's in other status and change it to TV status.
4. TV picture is not clear and instable?
 - If the antenna is adjusted correctly
 - Maybe the signal from earth is too weak
5. TV have picture shadow or snowflake interference?
 - Maybe it receive the echo signal from the tower.
 - Maybe it is interfered by the electric wave from bus, train, high voltage line and neon lights.
6. TV no color?
 - If the chroma is right and the system is right
 - Signal is too weak and achromatic function works.
7. Don't play disc?
 - Confirming if put disc on the salver according to right way. (Label upwards)
 - If disc have smudge and nick, it must be clean or replace.
 - Take disc laying by one hour or so on electrify state if it dew.
 - Affirm if DVD on the playing Disc status, please press SD/DVD key, change to playing Disc status.
8. Don't play U disc or CARD?
 - Affirm if on playing U DISC or CARD status, please press SD/DVD key, change to playing USB or CARD status.
 - Affirm if U DISC or CARD have content and format is correct or not.
9. Don't play game?
 - If enter into game status. (Operate according to page 7 in specification)
 - When playing single game, if the game joystick connect to the unit by interface jack GAME1.
 - If supporting the game in game disc, U DISC or CARD.
10. Sound abnormity? Image glitter?
 - Please confirm if the battery is power off, and connect the A/C adapter of this unit
 - Problems result from AV file themselves.

SPECIFICATION

- Model name: Portable multimedia DVD+TV player
- Supporting function: TV, AV, DVD, GAME, USB, CARD play, FM, COPY
- Receiving channels: VHF-L 48.25MHz-161.25MHz
VHF-H 160.25MHz-464.25MHz
UHF 463.25MHz-863.25MHz
- Audio system: I ☐ D/K ☐ B/G ☐ M/N ☐ L ☐
- Input and output ports: Outer antenna; AV input/output; Power input; Earphone output; USB input; GAME input; CARD input; VGA input
- Audio output: 1W(max)
- Speaker: 8Ω2W two round
- Power supply: DC12V
- Power consumption: 20W
- Dimension: mm
- Net weight: kg

Attention

Some instruction items have ticket, means the unit equips those functions.