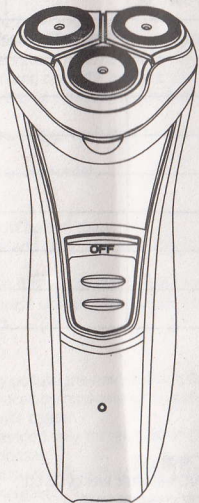


# POVOS® 奔腾

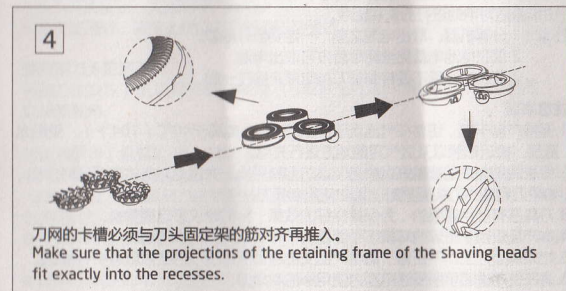
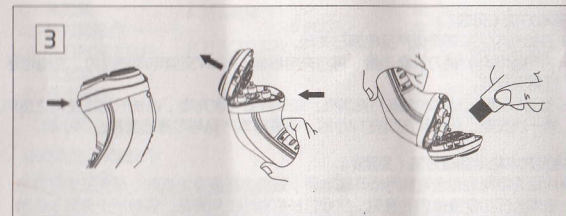
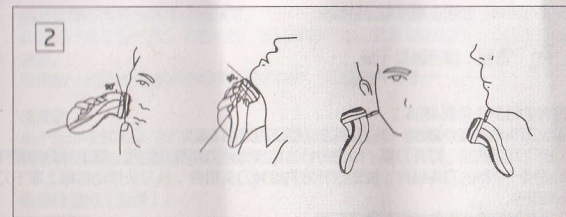
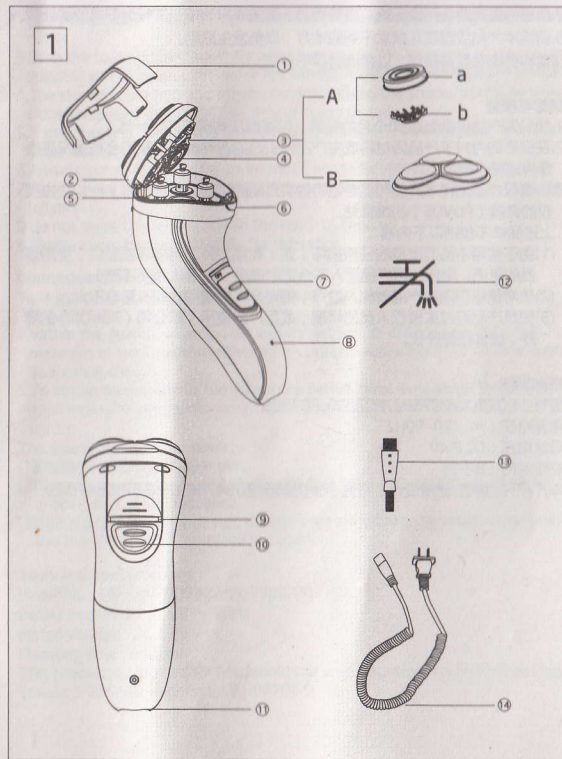
PQ7300/PQ7302/PQ7306/PQ7308

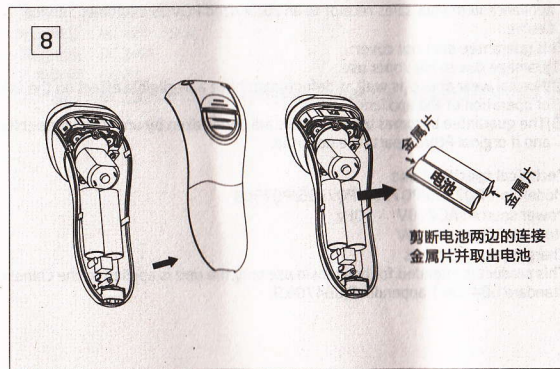
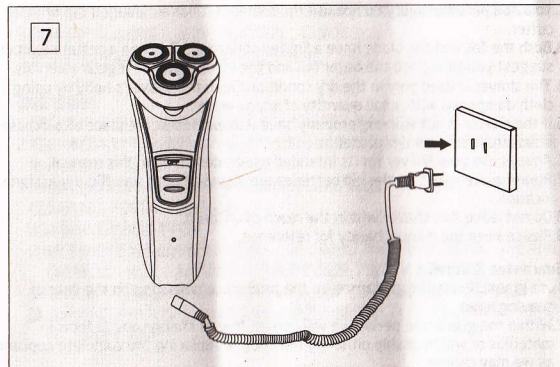
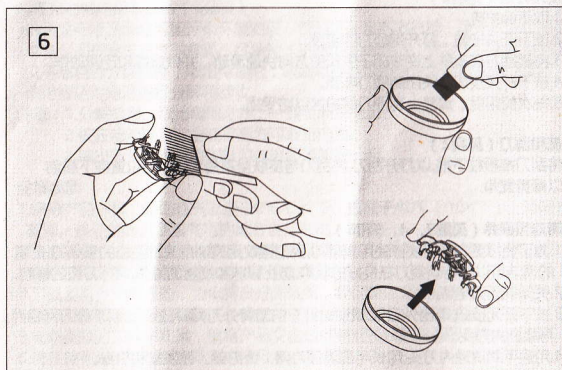
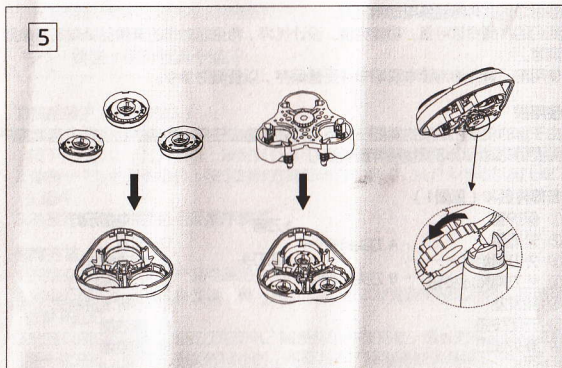
Rechargeable Shaver  
电动剃须刀



## Operating instructions 使用说明书

Before operating this unit, please read the instructions completely and save them.  
在使用前, 请仔细阅读此说明书并妥善保管。





Thank you purchasing the POVOS shaver. Our products are designed to meet the highest standards of quality, functionality and design. We hope you enjoy your new POVOS shaver. Before operating this unit, please read these instruction completely, please keep the manual or ready reference.

#### Before use

Your POVOS shaver requires a little time to get used to because your skin and beard need about a month to adjust to any new shaving method.

#### Parts identification (see fig.1)

- |                                   |                   |                   |
|-----------------------------------|-------------------|-------------------|
| ① Protective cap                  | A — a Shaving cap | ⑩ Indicator light |
| ② Foil frame                      |                   | ⑪ Trimmer         |
| ③ Shaving head floating system    | B — Shaving head  | ⑫ Trimmer handle  |
| ④ Release knob of floating system |                   | ⑬ Charging socket |
| ⑤ Hair chamber                    |                   | ⑭ Non-washable    |
| ⑥ Foil frame release button       |                   | ⑮ Cleaning brush  |
| ⑦ Switch                          |                   | ⑯ Adaptor         |

#### Using your shaver (see fig.2)

1. Remove the protective cap.
2. Depress the switch to turn the shaver on.
3. Move the shaver quickly over your skin and against the growing direction of beard. Make both straight and circular movements.
4. Depress the switch to turn the shaver off.
5. Put the protective cap on the shaver every time you have used to prevent damage of shaving cap.

#### Using the trimmer (see fig.2)

Slide the trimmer knob down to open the trimmer. Place the trimmer at a right angle (90°) to your skin and move it downward to trim sideburns.

#### Cleaning and maintenance (see fig.3, 4, 5 and 6)

1. For the purpose of good cleanness to the shaver. It's recommended that you clean your shaver with brush and regular cleaning will keep your shaver in good condition while preventing odors or bacteria from developing, and maintain the cutting performance.
2. Switch off the shaver.
3. Push the foil frame release button and remove the foil frame, counterclockwise rotating outer foil release button and remove the system outer foil down. Then



take down the inner cutter.

- Clean the guard, foil frame, hair chamber and the shaver body with the long side of brush. Clean the inner cutter with the short side of the brush.
- Reassemble the shaver parts in the reverse order.



**Warning:** Make sure the shaver body drying using.

#### The cutting system maintenance (see fig.4 and 5)

It is recommended that you replace shaving cap and shaving head outside at least every one year to maintain your shavers cutting performance.

- Press down foil-frame release button and open the bracket.
- Take apart floating system from the bracket via release knob of floating system fig 4.
- Rotate cap-fixing frame to certain locating as fig 5 then take shaving cap and shaving head outside.
- Reassemble the shaver parts in the reverse order.

#### Charge (see fig.7)

- Please make sure that the power is off before charge.
- Connect the power line to the shaver, and plug the power line to an AC outlet, charging always a red light.
- You will be available eight hours with this shaver. If you first charge for new shaver or not used for long period, please charge it constantly for 12 hours. Don't put through the power over 24 hours.

#### Recycling the battery (see fig.8)

Batteries contain substances that may pollute the environment. The battery in this shaver is not intended to be replaced by consumers. However, the batteries may be replaced at an authorized service center.

- The procedure described below is intended only for removal of the rechargeable battery for the purpose of proper disposal.
- Only in the battery completely exhausted before the battery removed.
- Do not remove the battery during charging.

#### Caution

- Do not charge the shaver when the temperature is below 0°C (32°F) or above 40°C (104°F), where it will be exposed to direct sunlight or a heat source, or where there is a lot of moisture.
- Please put the protective cap on the shaver every time to prevent cap damage.

To avoid personal injury, do not use the shaver if it has a damaged cap or inner cutter.

- Both the foil and the blade have a limited service life. To keep a better result, we suggest you to replace the outer foil and the inner cutter at regular intervals.
- The shaver is used only in the dry condition. Clean the shaver's body by using a cloth dampened with small quantity of soapy water.
- If the shaver is not working properly, have it inspected at the place of purchase or an authorized service center.
- Always use your shaver for its intended use, as described in this manual.
- Please make sure that the old batteries are disposed of at an officially assigned location.
- Do not leave this shaver within the reach of children.
- Please keep the manual handy for reference.

#### Guarantee & service

- We grant 30 months guarantee on the product commencing on the date of shaving head.
- Within the guarantee period we will correct, free of charge, any defects in materials or workmanship, either by repairing or replacing the complete appliance as we may choose.
- To obtain service within the guarantee period, hand in or send the complete appliance with your sales receipt to an authorized POVOS Customer Service Centre.

This guarantee does not cover:

- Damage due to improper use.
- Normal wear or use as well as defects that have a negligible effect on the value or operation of the appliance.
- The guarantee becomes void if repairs are undertaken by unauthorized persons and if original POVOS parts are not used.

#### Technical specifications

Model No. : PQ7300/PQ7302/PQ7306/PQ7308

Power source : AC 220V 50Hz

Motor voltage : DC 2.4V

Charging time : 8 hours

This product is intended for household use only, the unit is applied to the Chinese standard GB4706.1 appendix B, GB4706.9.