

POVOS®

PS1080/PS1086

电动女用剃毛器 Electric Ladyshave

Operating instructions

使用说明书

Before operating this unit, please read the instructions completely and save them.

在使用前，请仔细阅读此说明书并妥善保管。



图示
Figures

1

英文
English

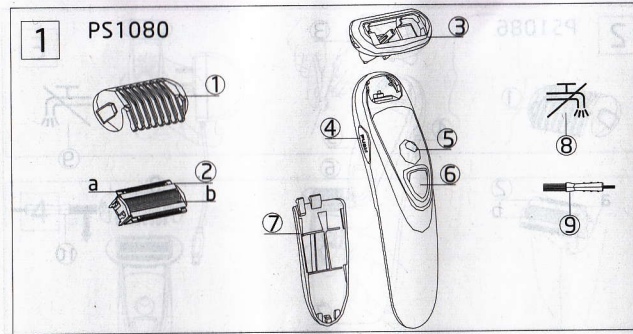
7

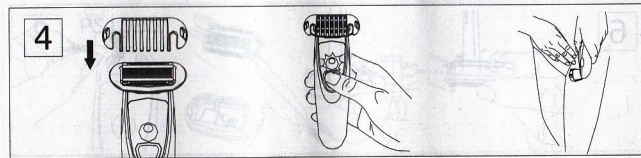
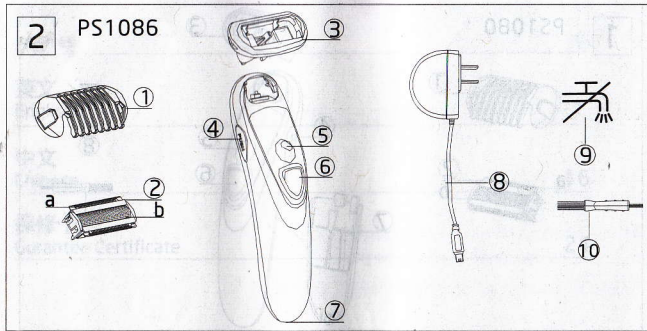
中文
Chinese

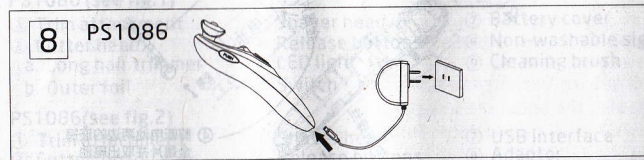
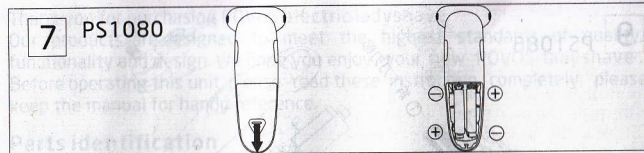
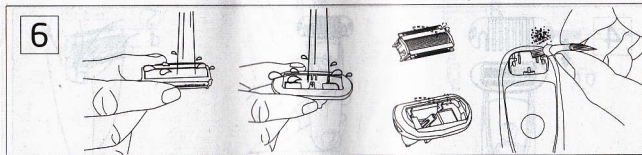
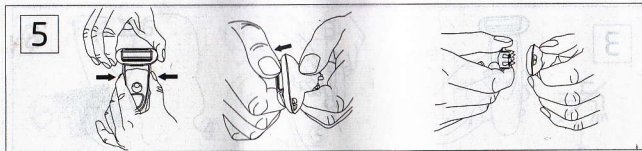
16

保修卡
Gurantee Certificate

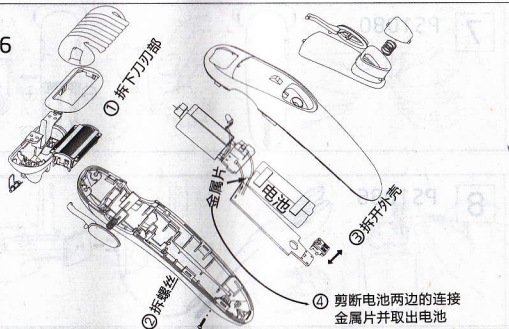
24







9 PS1086



Thank you for purchasing POVOS electric ladyshave. Our products are designed to meet the highest standards of quality, functionality and design. We hope you enjoy your new POVOS ladyshave. Before operating this unit, please read these instruction completely, please keep the manual for handy reference.

Parts identification

PS1080 (see fig.1)

- | | | |
|----------------------|-------------------|---------------------|
| ① Trim attachment | ③ Shaver head | ⑦ Battery cover |
| ② Cutter head | ④ Release buttons | ⑧ Non-washable sign |
| a. Long hair trimmer | ⑤ LED light | ⑨ Cleaning brush |
| b. Outer foil | ⑥ Switch | |

PS1086(see fig.2)

- | | | |
|-------------------|-------------------|-----------------|
| ① Trim attachment | ③ Shaver head | ⑦ USB interface |
| ② Cutter head | ④ Release buttons | ⑧ Adaptor |

- a. Long hair trimmer
- b. Outer foil

- ⑤ LED light
- ⑥ Switch

- ⑨ Non-washable sign
- ⑩ Cleaning brush

Using your ladyshave

Shaving your legs area(see fig.3)

1. Depress the switch to turn the ladyshave on and LED light up.
2. Stretch the skin with your free hand to make the hairs stand upright. Move the ladyshave slowly over the skin against the direction of hair growth while pressing it lightly.
3. Adjusting to the body contours, the long hair trimmer first raises all long hairs and cuts them off. Then the ladyshave foil follow to smooth away any stubble.
4. Depress the switch to turn the ladyshaver off.

Shaving the underarms(see fig.3)

1. When shaving the underarm area, place one arm behind your head to stretch the skin.

2. Move the ladyshave slowly over the skin.

Using trim attachment(see fig.4)

Put the trim attachment on the ladyshave to trimming hair to a uniform length. For optimum results, move the appliance slowly against the direction of hair growth.

Cleaning and maintenance(see fig.5/6)

1. Please make sure that the power is off before cleaning.
2. Push the release buttons and remove the shaver head up, then detach the cutter head as shown.
3. Shaver head and cutter head are directness to water cleaning. Clean the other part by cleaning brush.
4. Dry the shaver head and cutter head, then reassemble the ladyshave parts in the reverse order.

PS1080:

Replacing batteries(see fig.7)

1. Open the battery cover in the direction of the arrow, insert two AAA LR03 batteries into the battery slot according to the symbol ⊕ and ⊖. Mount the bottom cover.
2. Do not combine an old battery with a new one, or use different types of batteries together.
3. If the ladyshave will not be used for a long time, please remove the batteries.

PS1086:

- You will be available eight hours with this PS1086 ladyshave.
- If the ladyshave is charged more than 10 hours frequently, the battery capacity will be reduced.
- Do not operate this ladyshave when charging.

Charging(see fig.8)

1. Please make sure that the power is off before charging.
2. Connect the USB interfaces of ladyshave and adaptor, then plug into mains to recharge.

Recycling the battery (see fig.9)

Batteries contain substances that may pollute the environment. The batteries in this shaver are not intended to be replaced by consumers. However, the batteries may be replaced at an authorized service center.

1. The procedure described below is intended only for removal of the rechargeable battery for the purpose of proper disposal.
2. Only in the battery completely exhausted before the battery removed.
3. Do not remove the battery after the shaver and power will be connected together.

The cutting system maintenance

1. It is recommended that you replace the cutter head at least every year to maintain your ladyshave's cutting performance.
2. Turn the ladyshave off before replacing the cutter head.
3. Remove the cutter head up, then install a new one.

Caution

- 1.The outer foil is very thin. If handled improperly, it can be easily damaged. To avoid personal injury, do not use the ladyshave if it has a damaged foil or inner cutter.
- 2.Both the foil and the blade have a limited service life. To keep a better result, we suggest you to replace the outer foil and the inner cutter at regular intervals.
- 3.This ladyshave is used only in dry condition. Clean the ladyshave's body by using a cloth dampened with soapy water.
- 4.Do not forget to close the ladyshave power to prevent shorten the batteries life.
- 5.If the ladyshave is not working properly, have it inspected by the dealer or an authorized service center.
- 6.Always use your ladyshave for its intended use, as described in this manual.
- 7.Please make sure that the old batteries are disposed of at an officially

assigned location.

8.Do not leave this ladyshave within the reach of children.

9.Please keep the manual handy for reference.

Guarantee & service

- 1.We grant 30 months guarantee on the product commencing on the date of purchase. Cutter head is granted half a year guarantee.
- 2.Within the guarantee period we will correct, free of charge, any defects in materials or workmanship, either by repairing or replacing the complete appliance as we may choose.
- 3.To obtain service within the guarantee period, hand in or send the complete appliance with your sales receipt to an authorized POVOS Customer Service Centre.

This guarantee does not cover:

- 1)damage due to improper use.

- 2) normal wear or use as well as defects that have a negligible effect on the value or operation of the appliance.
- 3) The guarantee becomes void if repairs are undertaken by unauthorized persons and if original parts are not used.

Technical specifications

Model No. : PS1080

Rated voltage: 2.4 V

Battery specifications: AAA R103 X2

This product is intended for household use only, accord with the GB.

Model No. : PS1086

Power source: 100-240V~ 50/60Hz

Motor voltage: 2.4V

Charging time : 8 hours

This product is intended for household use only, the unit is applied to the Chinese standard GB4706.1 appendix B, GB4706.9.