

# IP CAMERA

## Quick Start Guide

### Important Safety Instructions

The followings are the instructions of proper use of the product as well as to prevent danger, to prevent damage of property, etc. Before using the equipment, please read this manual thoroughly and during use please strictly adhered to, after reading please keep this manual.



#### Cautions

##### 1.1 Power Requirements

Please comply with all local electrical safety standards strictly when use or install this product. Please use the power with SELV (Safety Extra Low Voltage) standard. And supply the power with DC12V in accordance with IEC60950-1 line with Limited Power Source (limited supply).

Installing a readily accessible disconnect device when install wiring, just for emergency power off when necessary.

Before using the camera, please check the power supply is correct or not.

Please protect the power cord from being walked on or pinched, particularly at plugs, power outlets and the point where they exit from the apparatus.

##### 1.2 Environmental requirements

Please avoid aligning the light (such as lighting, sunlight, etc.) focusing, otherwise easily lead to too bright or pull light (this is not for the device bug), and it will also reduce the lifetime of the image sensor CCD (or CMOS).

Please transport, use and store this device in the allowed range of humidity and temperature. Do not put the device in the environment of humid, dusty, extreme heat, extreme cold, strong electromagnetic radiation or unstable lighting conditions and other places.

Please do not let the water and any other liquid inflow into the device, which may damage the internal components.

To prevent heat accumulation, please do not block air circulation around the device.

### Interface

### General Introduction

This quick start guide is designed to be a reference for cube network camera operation, including open-package inspection, camera construction introduction, camera installation quick configure tool, web operation, FAQ and appendix.

### Symbol definition

Below symbols maybe show in this quick guide, the definition is as follows :

Symbol	Instruction
	Indicates a high degree of risk which, if not avoided, will result in death or serious injury.
	Indicates a medium or low level of risk which, if not avoided, could result in minor or moderate injury.
	Indicates a potentially hazardous situation, if not avoided, could result in equipment damage, data loss, performance degradation, or unexpected results.
	Indicates that may help you solve a problem or save you time.
	Indicates the text of the additional information to emphasize or supplement the main text

Please prevent stress, violent vibration, immersion and other damage from the product during the transportation, storage and installation process.

When transporting the camera, need to be re-packaged with the factory packaging, or with packaging material of equal quality.

Suggest with lightning protection devices when use in order to make lightning protection better.

Grounding hole on the product suggest to be grounded, for further improving the reliability of the equipment.

### 1.3 Operation and maintenance requirements

Do not disassemble the camera, for there are no user-serviceable parts in the device.

Please do not touch the image sensor CCD (or CMOS) directly. Hair dryer available to clear the dust or dirt on the surface of the lens. If cleaning is necessary, place a dry cloth lightly moistened with alcohol, and wipe it gently.

Clean the body with a soft, dry cloth. In case the dirt is difficult to remove, you should use a clean, soft cloth dipped with small amount of neutral detergent to wipe gently, and then dry. Do not use volatile solvents, such as alcohol, benzene or thinners, or with strong and abrasive cleaners. Otherwise it will damage the surface coating or reduce the camera's performance.



#### Warning

Installation and maintenance of this product should be operated by specific operation, do not conduct their own demolition and maintenance, and please Only use manufacturer's prescribed attachments / accessories.

CCD (or CMOS) may be subject to the damage of the laser beam, so in the use of a laser beam device, please keep the surface of image sensor from the laser beam radiation.

### Special Statement

Please refer to the practical production, and the manual is just for your reference.



Products updated in real time, without notice if upgrade. Before or after product updating, subtle differences are allowed. Please contact our customer service department for new procedures and supplementary documentation.

If any problems occur when using the camera, please contact the supplier or customer service department.

We try our best to ensure the integrity and accuracy of the contents in the specification, but because of the real environment instability and other reasons, some of the actual value of the data may be biased with the values provided in the instructions. If any questions or disputes, please refer to finally explain of the company.

If you do not follow the instructions in the manual, any loss resulting from should be undertaken by the use parties themselves.

## 1 Open-package inspection

### 1.1 Step:

When user receive network camera, please check the appearance if any obvious damage. The selection of protective materials on package can well cope with most of unexpected impact during the transport.

Open the outer box and refer to packing list to check following accessories is completed

### 1.2 Accessories

Check the accessories same as described in the below list after opening the box, the actual setting please refer to products.

Figure 1 Packing List

Name	Amount
IPC	1
Quick start guide	1
Installation spare parts	1
CD	1

If you want to modify the device information in TEKTools, select it and input new IP address, subnet mask, port number and user password (The default password is :admin), click [modify], then you can modify the IP address, shown in figure 2:

Figure 2 Modify IP address



#### Note:

Network camera default IP is "192.168.1.18", port number "6666", user name is "admin", password is "admin"

## 3 WEB Operation

### 3.1 Introduction

This series IPC product support the Web access and management via PC.

Web includes several modules: monitor channel preview, system configuration, alarm and etc.

### 3.2 System Login

#### 3.2.1 Network connection

Make sure the IPC has connected to the network properly. Please set the IP address, subnet mask and gateway of the PC and the IPC respectively. IPC default IP address is 192.168.1.18. Subnet mask is 255.255.255.0. Gateway is 192.168.1.1. Use order ping \*\*\*.\*\*\*.\*\*\*.\*\*\*(\* IP camera address) to check connection is OK or not.

#### 3.2.2 Login web

Open IE and input IP camera address in the address bar  
When it is connecting, input username and password then press button to login as below figure.  
Factory default supervisor username : admin, password : admin.  
Please amend password after logging in

## 2 Quick Configuration Tool



### Instruction:

Quick configuration tool can search current IP address, modify IP address. At the same time, you can use it to upgrade the device. Please note the tool only applies to the IP addresses in the same segment.

Double click the "ConfigTools.exe" icon, you can see an interface is shown as In the device list interface, you can view device IP address, port number, subnet mask, default gateway, MAC address and etc.

Please set the IP address, subnet mask and gateway of the PC and the IPC respectively ( please set IP address in same segment if no router in local network, if have, please set corresponding gateway and subnet mask, ) network camera default IP address is 192.168.1.66 .Default user name is :admin, password is admin . please amend supervisor password after logging in . Please refer to the Web Operation Manual included in the resource CD for detailed operation instruction "Network camera manual instruction "

Figure 1 TEKTools quick search interface

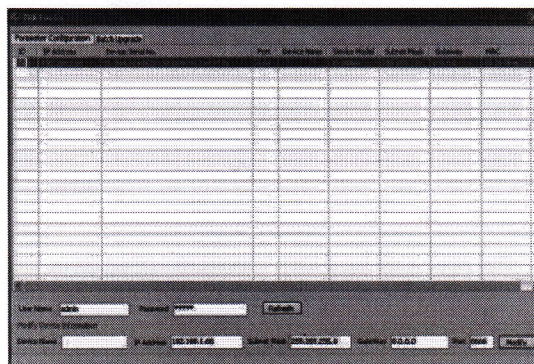
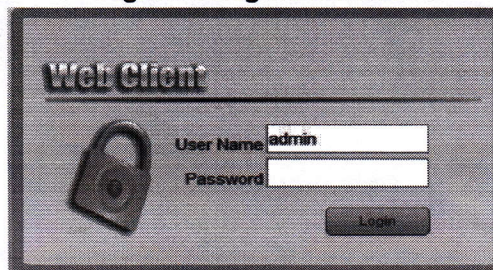


Figure 3 Login interface



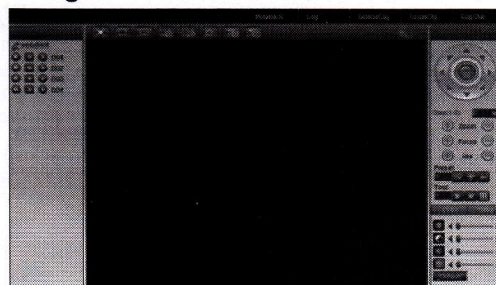
Open IE and input IP camera address in the address bar

If it is your first time to login in, system pops up warning information to ask you whether install control webrec.cab or not after you logged in for one minute. Please click OK button, system can automatically install the control. When system is upgrading, it can overwrite the previous Web too.

If you can't download the ActiveX file, please check whether you have installed the plug-in to disable the control download. Or you can lower the IE security level

After you logged in, you can see the main window, see figure 4

Figure 4 WEB Live view interface



Please refer to the Web Operation Manual included in the resource CD for detailed operation instruction.