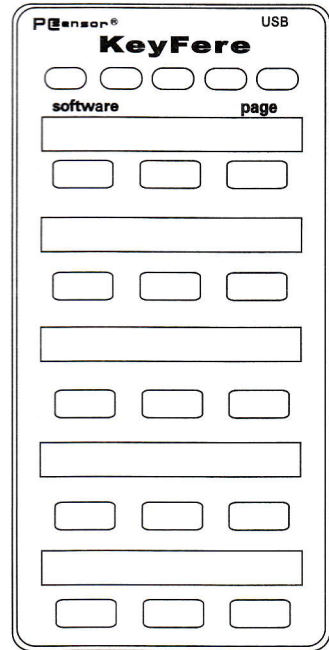


PEsensor®

KeyFere

Customize keyboard Specification



- ◆ My keyboard, my rules
- ◆ Efficient, convenient, quick to play your software
- ◆ Switching the commonly used software each other
- ◆ Get rid of dependence on mouse and keyboard
- ◆ Speed through the menu maze
- ◆ A key to solve the memory troubles

Elementary operation

Welcome to purchase PCsensor's customize keyboard KeyFere , hope it can improve your work efficiency, Lighten the burden of your brain.

1, Here are some simple shortcuts built into the product, test method:

- Connect the computer and the KeyFere via USB cable;
- Press the corresponding button, observe whether the real-time implementation of the corresponding computer.

2, Log in <http://software.PCsensor.com> , download and install the KeyFere software.

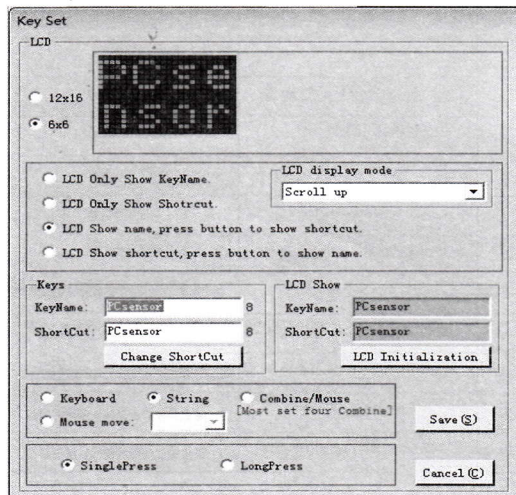
3, KeyFere software support windowsXP, win7, win8;

4, Software installation instructions can be found on download package of relevant documents;

5, KeyFere is a standard HID USB device, in the windows system, you can set the MAC IOS/ Linux shortcuts key ,then, you can run KeyFere in MAC IOS /Linux , even can connect to the android device with OTG interface.

6, If you have any questions, please visit www.PCsensor.com FAQ or contact seller.

Button Settings



Key name: nickname of shortcuts. (allow own define the name.);

Keyboard shortcuts: Actual execution action of The KeyFere keys in computer , such as letter A/B, multiple strings/key combination, mouse function.

Dynamic pattern of LCD: when it beyond the number of display screen, it will scrolling display;

Keyboard : you can set any keys, but only one , for example "A";

String : you can input any string, for example: PCsensor;

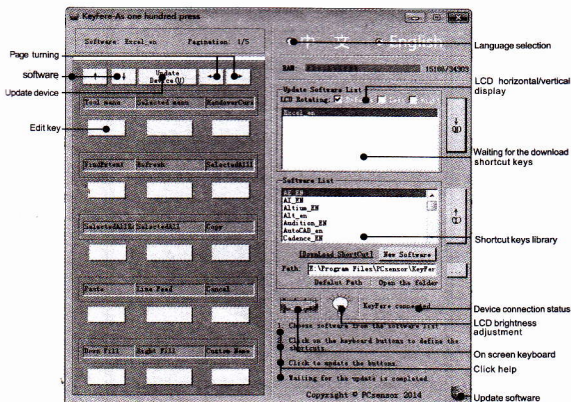
Single press: shortcuts only can run one time if you press it.

Long press: shortcuts can continu to press.

Keyboard Shortcuts sample

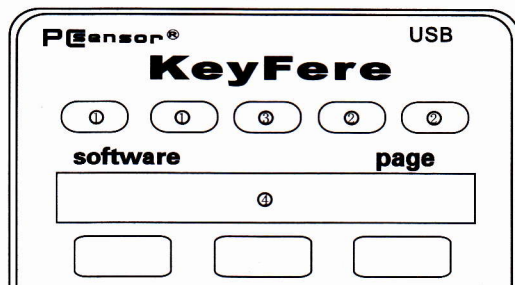
No.	combination key	Description
1	"Win"	One key
2	Ctrl+F4	The key combination of two keys
3	Ctrl+Shift+Alt+F4	The key combination of four keys
4	Ctrl+A+Ctrl+C	Two keystrokes combination
5	Ctrl+A+Ctrl+C+Ctrl+V	Three keystrokes combination
6	Ctrl+A+Ctrl+C+Ctrl+V+Ctrl+V	Four keystrokes combination
7	Alt+F+O+P	Multiple keys combined into a keystrokes combination: form a continuous operation
8	(M)Left/(M)Middle/(M)Right	The click function of mouse: click the text box can appear
9	Whell(Down)/Whell(Up)	The roller rolling function of mouse::click the text box sliding the roller
10	Ctrl+Whell(Down)	Specific function keys add the mouse function of pulley
11	Ctrl+Shift+A+Whell(Down)	Specific function keys add the mouse function of pulley

Software Settings



1. All shortcut keys are saved in a local file, KeyFere software includes a variety of keyboard shortcuts template, you can modify, add shortcuts or shortcut keys template.
2. The own defined shortcut key file you can use in other computer. Please backup well.
3. Click on each corresponding buttons of software interface, can edit the actual implementation of this action, also can right-click the shortcut keys into quickly edit the template. (in the software list)
4. If no keyboard on computer, can use (On screen keyboard) in our software by the mouse. Or running the OSK command to call your system of screen keyboard.
5. The contrast ratio of LCD can adjust by software.
6. After the setting, click the update device and let download the shortcut key update into KeyFere. (Please ensure the "KeyFere keep connected state" before download)
7. KeyFere software is embedding "online update feature", through it to test software version.

Button description



- ① 2pcs "Software" buttons are switch different software buttons; When download more than one software, you can switch the different software through this button;
- ② 2pcs "Page" buttons are "page turning" buttons, when the shortcuts more than 15 keys or more pages, you can press this button to switch the key shortcuts pages;
- ③ Middle button can view the software name and page number of software and so on.
- ④ In the middle button of LCD is each screen can display 2 Chinese characters, around the edge keys each screen can display 4 Chinese characters; English display use 6X6, each screen can display only four English letter, around the edge can display 8 English letter at most. When the display content is more than the display number of each screen, it will automatically roll, you can define rolling mode.
- ⑤ The direction of the LCD display can be set through KeyFere software: horizontally display or vertically to display.

Packing list

NO.	Parts Name	Qty
1	KeyFere	1
2	Mirco USB cable	1
3	OTG USB cable	1
4	Specification	1

This manual is for reference only, the actual software interface are to the latest version shall prevail.