

## 1. Accessories

- ENTALENT bluetooth touch lighting speaker x 1
- USB charging cable x 1
- AUX input cable x 1
- User manual& Certification card x 1

## 2. Product Overview

This is a high optical designed mini bedside lamp speaker, with lovely mushroom appearance, sweet and thorough music, strong power and powerful penetration, easily to carry multimedia computers, is available for the family bedrooms, home decoration, outdoor tourism, office and other places, to enjoy the easy from music anytime and anywhere, provides

## 3. Function&feature

- 3.1 **【Bluetooth play】** Support for the bluetooth playing function of smart phones and other stereo play devices.
- 3.2 **【MP3 play】** Support TF card MP3 decoder function.
- 3.3 **【Audio input】** With external audio input AUX line(Can be connected to the computer, laptop, PSP, MP3, MP4, mobile phone etc)
- 3.4 **【Intelligent charging】** Support for the function of music playing, charging and powered by USB cable(The computer system will detect, identify and install the new hardware auto-matically; The computer'll start the Windows Media Player, iTunes and other Media player program)
- 3.5 **【Rechargeable Lithium】** Built-in lithium battery charged by USB make you enjoy the charm of digitals.

## 4. Operation

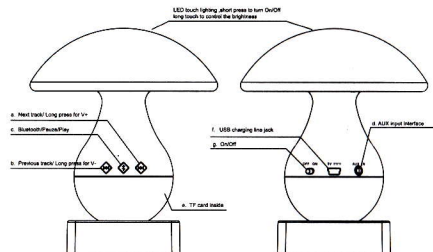
The micro PC system identifies the outside device automatically, gets into the standby mode after booting, play automatically after insert the TF card, the detailed operation function: please read the item5 -- Function of button/jack.

## 5. Function of button/jack

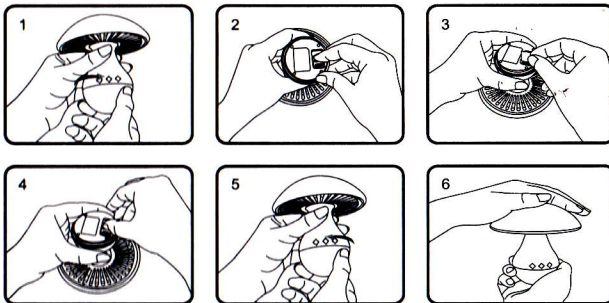
- 5.1. The speaker'll get into the work state when you turn the power switch to "on" position, meanwhile it'll play music when insert the TF card, and you can use an external audio source signal also.
- 5.2. Short press **⏮** to play the previous; short press **⏭** to play the next; short press **⏸** it will play or pause; Long press **⏮** to turn up the volume, and long press **⏭** to turn it down.
- 5.3. It'll identify and play the MP3 files automatically when insert TF card.
- 5.4. **AUX IN** Mp3 function:  
Insert the distribution of high-fidelity audio line, automatic identification of stereo audio input interface, and connected to the computers, and other kinds of sound sources easily.
- 5.5. The function of USB audio card:  
The speaker will be charged as soon as you plug the USB cable, the red light in the lamp shade will bright, and it'll extinguish when the charge complete, meanwhile the device recognizes the stereo audio interface automatically.
- 5.6. The function of table lamp:  
The lamp will be bright when you touch the top of the lamp cover, and it'll extinguish when you touch it again.  
The LED light will lighting up slowly when put your hand on the lamp cover, and it'll darken slowly when put your hand on the lamp cover another time, you may control the brightness of the lamp as your will.
- 5.7. **Bluetooth Function:**  
Long Press **Ⓜ** to start the bluetooth function, the red light under the covers blinks, and interlinking audio equipment which have bluetooth function with it. The connect code is: 0000, when it works, the red light will blinks slowly; short press **Ⓜ** to play the previous; Short press **Ⓜ** to play the next, short press **Ⓜ**, it will play or pause. Long press **Ⓜ** to turn up the volume, and long press **Ⓜ** to turn it down.

## 6. Diagram functional

- a. Volume+/Next track  
b. Volume-/Previous track  
c. Bluetooth/Pause/Play  
d. AUX input interface  
e. TF interface  
f. USB charging line jack  
g. On/Off



## 7. TF card installation



- F1. Hold the middle of the speaker, turn the bottom to the right, take down the bottom cover;  
F2. Open the TF card slot;  
F3. Insert a TF card;  
F4. Close the TF card slot;  
F5. Replace the back cover  
F6. Installation is finished

## 8. How to charge

Insert one end of the power wire to the jack of DC5V, and insert the other plug of USB to USB interface of DC, or connect with the standard 5V 500mA charger interface with the built-in protection device of over-charged, the charge will be finished in 4 hours, and it is available to connect with the PC or the charger for a long time; the continual working time of the battery is varied with the volume.

## 9. Low power

The device will shut down automatically when it's low power. Please charge it in time. Please charge the device once every month in the case of long time no use.

## 10. Problem & Solution

- 10.1. Automatically shut down after turn on: battery with low power, please charge it for two hours before use it.
- 10.2. Automatically shut down or restart while playing: battery with low power, please charge it for two hours before use.
- 10.3. Unable to play music: Mp3 music file storage path can not be identified by the player, please store your files onto the root directory of mobile devices.
- 10.4. Speaker soundless: please select the volume switch is turned on.
- 10.5. No sound after connected to the computer: computer ports connection error, please select the correct computer audio output ports.
- 10.6. Buttons without function or with error function: turn off and restart the

problem	expression	Problem solver
Fail to match		1. Please check the device in the state of search or not
		2. Too many bluetooth device around, please turn off other bluetooth device
Sound low/distortion		Check mobile phone volume and Adjust it to fit level
Off and on when play		Check whether it's over the effective range, or there is obstacle between the device and phone or not.
Bluetooth indicator is not bright		Low power, or the bluetooth function has been turned off.
Inability of the buttons "and"		Please try mobile phone system music player or other players

## 11. Technology specification

- \*The max power output: 3W
- \*Frequency response: 80Hz-20KHz
- \*Distortion: <0.3%
- \*S/N: ≥85 Db
- \*Specification of Speaker: 4Ω 3W
- \*LED Luminous Intensity: 1200mcd

- \*MAX power of LED: 0.72W
- \*Sensitivity: ≥85Db±2Db
- \*Operating temperature: -10℃~+50
- \*Capacity: DC3.7V/600MAH

## 12. Machine Maintenance

- No place in damp environment.
- No solvent cleaned.
- No place in extreme temperature.
- Keep away from fire.
- Please do not contact with sharp objects in case of scratch.
- Not insert any other thing into the device.
- There's not any serviceable parts for non-professional personnel inside the device. Non-professional personnel are forbidden to open the device which may result in electrical shock.
- Please placed in dry environment when long time no use.

## 13. Maintenance and Cwarranty service

Warranty period : 12 months

The product under warranty for twelve months from the date of purchase. In the warranty period, Entalent has the right to judge whether the product is defect, and decide using what way for repair. Entalent reserves all rights in the maintenance and warranty service.

## 14. Maintenance rights and restrictions

Please contact with distributors if you need maintenance service. Entalent will pay all shipping charges for the product under warranty, and consumer will pay all shipping charges when the product out of warranty. You must provide product and warranty card for warranty service. We'll service on demand excepted fair wear and tear, aslo we are not responsible for the damages and losses caused by force majeure, accident, correct operation. The warranty is void if repairs are performed by unauthorized persons or if other than genuine Husky replacement parts or accessories used. service@entalent.hk

## 15. Maintenance method

- If you need maintenance service, you may contact with us by:
- Phone : 4008 678 660
  - Work time: Mon-fri 8:30~17:30
  - Email : service@entalent.hk

## 16. Warranty card

NAME	GENDER	AGE
ADD		
PHONE NO.	POST CODE	
PURCHASE PLACE		
PRODUCT MODEL		
DISTRIBUTOR'S SIGN	CONSUMER'S SIGN	

ENTALENT INTERNATIONAL(ASIA)CO.,LTD

Add: Hangsong Commercial Building, NO.31 Tonkin Street, Cheungsha Wan, Kowloon, Hong Kong  
Shenzhen Longqi Tongda Electronic Technology Co., Ltd  
Add: Anfeng Industrial Park, Dalang, Longhua District, Shenzhen, China  
4008 678 660 www.entalent.hk



## 1. 包装内容

- ENTALENT迷你台灯式蓝牙音响 x1
- USB充电线 x1
- 外部音频输入线 x1
- 说明书+保修卡 x1
- 合格证 x1

## 2. 产品概述

本机是一款外观设计精美小巧，具有可爱清新蘑菇外形，音箱声音层次分明透彻，功率强劲，携带方便的照明音响，适用于床头小夜灯、家居装饰、户外旅游、办公室等场所，让您随时随地享受音乐带来的轻松，为您的电脑、数码音乐播放器、手机、MP3、MID平板电脑等视听产品提供超值完美的音质。


## 3. 功能特点

- 3.1 【蓝牙播放】支持各种智能手机等无线蓝牙立体声播放音乐功能。
- 3.2 【MP3播放】支持TF卡MP3解码器功能。
- 3.3 【音频输入】带AUX线路外接音频输入（可以连接电脑、笔记本、PSP、MP3、MP4、手机等。）
- 3.4 【智能充电】支持USB供电、充电、数据连接功能。（电脑系统会自动检测，发现设备硬件，并且安装新的硬件。）
- 3.5 【可充电】内置锂电池，适用USB充电，让您随时随地聆听数码的魅力。
- 3.6 【自动休眠】在蓝牙断开的情况下，十分钟后进入自动休眠模式。

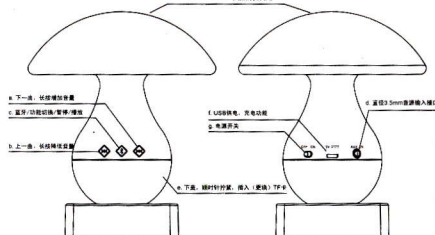
## 4. 播放音乐操作

本机微电脑系统自动检测并识别外接设备，开机后进入待机模式，插入TF存储卡自动识别播放，详细功能操作请仔细阅读第五项“产品的按键、插孔功能定义”。

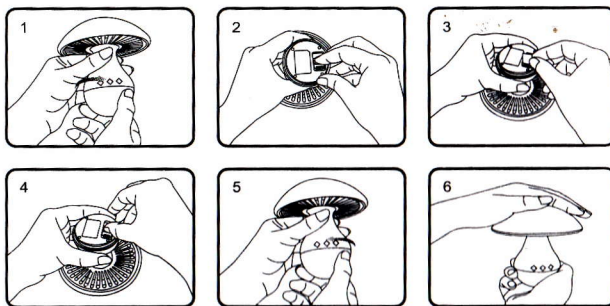
## 5. 产品的按键、插孔功能定义，功能说明

- 5.1 将电源开关拨到ON位置，机器进入工作状态。
- 5.2 短按“6. 产品图解说明

- a. 音量+/换曲
- b. 音量-/换曲
- c. 蓝牙/功能切换/暂停/播放
- d. 直径3.5mm音频输入接口
- e. TF卡槽
- f. USB充电线接口
- g. 开/关机



## 7. TF卡安装步骤



(TF卡槽上有方向指示：请按照指示安装，不正当的安装可能会损坏TF卡槽。)

- 图1：左手拿音响中间部位，右手往右边旋转底部。
- 图2：左手拿音响中间部位将底部倒过来，右手食指指住后面将TF卡座拨起。
- 图3：将TF卡插入卡座上对位压入。
- 图4：右手食指将卡座轻轻压回。
- 图5：左手拿音响中间部分，右手往左边旋转底部扭紧，适中力度。
- 图6：装卡完成。

## 8. 充电使用方法


将电源线一端插入的DC5V插孔，另一端USB插头插入DC的USB接口，或直接插入标准5V500MA的充电器接口。本机内置有充电保护电路，可长时间连接电脑或者充电器使用，约4小时可充满电池；电池每次的续航时间会因使用时音量大小而不同。

## 9. 电池低电

当电池出现低电压时，系统会自动关机，此时请及时充电；如果长时间不使用本机，至少每月充电一次，可保护电池延长使用寿命。

## 10. 疑难解答

- 10.1 开机就自动关机：电池电量不足，请充电两小时后再使用。
- 10.2 播放自动关机或重启：电池电量不足，请充电两小时后再使用。
- 10.3 不能播放音乐：MP3音乐文件存放路径不能被播放器识别，请将文件存放在可移动设备的根目录下。
- 10.4 喇叭无声音：音量是否打开。
- 10.5 连接电脑后无数据：电脑接口是否正确，请连接正确的电脑数据输出接口。

问题	现象	解决方法
多次配对不成功		1.检查音响是否处于待机搜索状态。 2.周边蓝牙设备太多，造成搜索困难，关闭其他蓝牙设备。
声音过小或失真		检查手机音量设置值，调节到大小合适。
音乐播放出现断音		是否超出音响的有效连接距离，或音响与手机之间有障碍物。
蓝牙状态指示灯不亮		表示电量不足，或长按了“  ”键关闭了蓝牙的功能。
播放暂停/上下曲无作用		请尝试手机系统自动播放器或其他播放器。

- 音响最大输出功率：3W
- 频率效应：80HZ-20KHZ
- 音响失真度：<0.3%
- 信噪比：≥85DB

- 高质量喇叭参数：4Ω3W
- LED发光强度：1200mcd
- LED最大功率：0.72W
- 内置电池规格：DC3.7V/500MAH
- 音响灵敏度：≥85DB±2DB
- 充电电压：DC5V/600MA
- 工作温度：-10℃~+50℃

## 12. 保养与维护

- 切勿将本机器暴露在液体、水汽或潮湿的地方，因为本产品没有防水功能。
- 切勿使用溶剂清洁本机器。
- 切勿将本机器放置在温度极高或极低的地方。
- 切勿将本机器暴露在火焰之中，会有造成爆炸的危险。
- 切勿将本机器接触尖锐对象，将会损毁本机器或造成刮痕。
- 切勿将任何对象插入本机器内，将会损毁内部组件。
- 切勿尝试拆卸本机器，本机器内没有任何可更换的维修组件。
- 如长时间不用本机器，请确保将它放置在干燥的位置，并远离温度变化很大及多灰尘的地方。

## 13. 维修及保固服务

质量保证期：12个月。

逸腾保证本产品自购买之日起12个月时间内不会出现制造或产品材料缺陷。在质量保证期内，产品或零部件是否存在缺陷，采用何种方式保修（指维修或更换），由逸腾判断决定。逸腾拥有该保修服务的最终解释权。

## 14. 保固权利及限制

为取得维修服务，请消费者与出售本产品的逸腾经销商联系。如果产品在保修之列，逸腾将承担返回运输费用。对于不在保修之列或不需要任何维修的产品，产品返回运输费用将由消费者承担。要取得维修服务，消费者须提供下列信息：(a) 产品；(b) 保修卡发票等证明。装饰性涂层、电池及其它承受正常磨损或撕裂的易耗元器件，不属于保修范围。表面损伤或因误用、滥用、疏忽、自然力、事故、拆封或对产品的任何部分修改造成的损坏，因不正确的操作、维护或安装、或任何非逸腾人员或逸腾授权从事保修工作的逸腾经销商尝试维修造成的损坏，不属于保修范围。如果出厂系列号、日期代码卷标或产品卷标被人有更改或从产品上清除，或者有任何未经授权进行的维修，逸腾将不再提供维修服务。

## 15. 维修办法

- 逸腾公司提供完善的产品保修服务以及有偿维修服务。一旦产品出现故障等问题，消费者可以通过如下任一方式与逸腾联系维修服务：
- 逸腾客服电话：4008 678 660
- 客户服务部开放的时间为：周一至周五 上午8:30分至下午17:30分
- 电子邮件支持：service@entalent.hk

## 16. 保修卡

用户姓名	性别	年龄
通讯地址	邮编	
联系电话		
购买地点		
品名及规格		
经销商签名	用户签名	

当您购买的产品需要维修时，请填写好此表格，随同产品寄往经销商或本公司。

香港逸腾实业（亚洲）有限公司  
地址：香港九龙长沙湾东京街31号恒邦商业大厦  
中国区代理：深圳市龙尚通达电子科技有限公司