

# **HD 12MP Infrared Game Camera**



## **User's Manual**

Welcome to buy SG-880V Infrared digital game camera. For making best use of all functions of the camera, please read this user's manual carefully before using it.

## **CONTENTS**

<b>General Information.....</b>	<b>3</b>
<b>Application.....</b>	<b>5</b>
<b>Camera Overview.....</b>	<b>6</b>
<b>Quick Start Guide.....</b>	<b>8</b>
<b>Menu Overview.....</b>	<b>11</b>
<b>Camera Setup and Program.....</b>	<b>13</b>
<b>Setting up the camera in the field.....</b>	<b>23</b>
<b>Appendix I: Default Setting.....</b>	<b>29</b>
<b>Appendix II: Technical Specification.....</b>	<b>30</b>
<b>Appendix III: Parts List.....</b>	<b>31</b>
<b>FCC Compliance.....</b>	<b>32</b>

## General Information

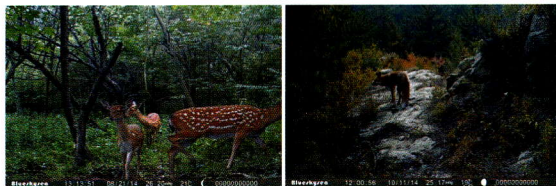
Model no.:SG-880V (940nm) , Patent no.:201530301477.9

This camera is our patent product, HD IR game camera with great performance.

It can be triggered by any movement of human or animals or vehicle in a certain region of interested (ROI) monitored by a highly sensitive Passive Infra-Red motion sensor (PIR),and then take high quality pictures (up to 12 mega pixels) or video clips.

It also has time laps function, which means the camera can capture pictures or video clips at specified time intervals regardless of if there is a motion of human or animals.

The device is equipped with 940nm invisible infrared dark LEDs for optional, it takes clear black&white pictures or videos in even in the dark night.



940nm: a kind of LED, has weak Red glow. People and animal's eyes are hard to find it. So camera with 940nm LED is more suitable for security and scouting. SG-880V has 36pcs 940nm LED with black cover, it is totally invisible at night.

The camera consumes very little power (0.2-0.3A level) at surveillance mode. Powered by 8 new AA alkaline batteries, the camera stands-by about 6 months. Once a motion by human or animals is detected, the digital camera unit will be awoken up at once and then automatically take pictures or videos according to previously programmed settings.

The device is designed for outdoor use and is resistant against water and snow. Furthermore, the camera can be used as a portable digital camera. Pictures or videos can be taken manually by pressing **Shot** button on the operation panel.

## Storing conditions

Operating Environment:-33 to 122 deg F(-30 to 60 deg C). 20-85% relative humidity, non-condensing.

## Warranty

Your scouting camera is covered by Warranty on parts and labor from the date of original purchase, and purchases must be made through an authorized dealer. Warranty period is complying with dealers' legal requirement. The warranty covers defects in workmanship and materials. The warranty does not apply to units, which have been damaged or abused intentionally or unintentionally. A purchase from individuals or unauthorized internet sites such as eBay voids the warranty. Tampering with or altering the unit will void the warranty. Any unauthorized service will void warranty. A copy of your original sales receipt must be produced for any warranty service.



### WARNING:

Reading User's manual before using it.

Changes or modification to this unit not expressly approved by the party responsible for compliance could void the user's authority to operate the equipment.

### Cautions:

- Please do not insert or take out the SD card when the power switch is at ON position, SD card should be Class 10.
- The working voltage of the camera is 12V. The camera is supplied by eight AA batteries.
- Please install batteries according to shown polarity.
- Please use good quality AA batteries and take out batteries when camera is free long time.
- In the TEST mode, the camera will shut down automatically after 30s if no operation is done. Please turn on the power again if you want to continue to work with the control.
- It is recommended to format the SD-card by the camera when used at the first time.
- Please keep power on when camera is upgrading. Wait for 5seconds after upgrading or power off.
- Keep camera far away from hot and heat source, vent of air condition, lighting etc to avoid false trigger and shorten camera life.

**NOTE: This camera is a precision electronic device. Do not attempt to service his camera yourself, as opening or removing covers may expose you to dangerous voltage points or other risks.**

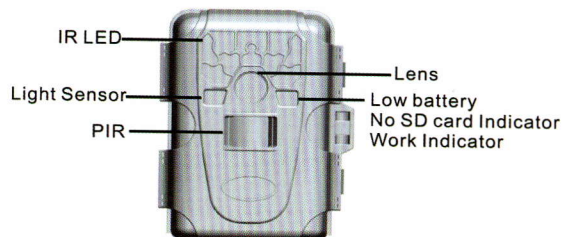
## Application

- Trail animals trace or habit, camera be used as trail camera for hunting or monitoring animals by recording the traces of wild animals. Is camera trap for animals, or for wildlife camera
- Wildlife observation, Monitor plant, animals growing up
- ecological monitoring and researching
- Traffic/surrounding surveillance, Camping fun/exploring caves
- Security and surveillance: This camera can be used as automatic surveillance device for guarding and recording unexpected intrusion: Indoor & outdoor security( home ,Supermarket, warehouse, school, office, garden, mine filed, building ,Depots, worksites etc)
- It can be left alone for weeks and months and it will save event records automatically in digital format
- It can be used as hidden camera for Media, guarder, policeman, military

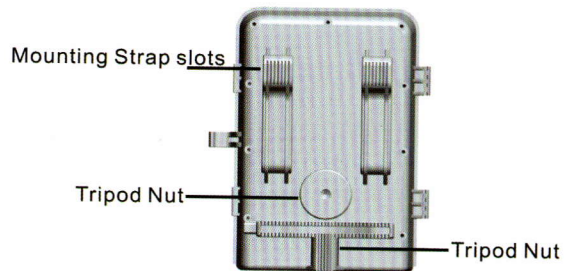


## Camera Overview

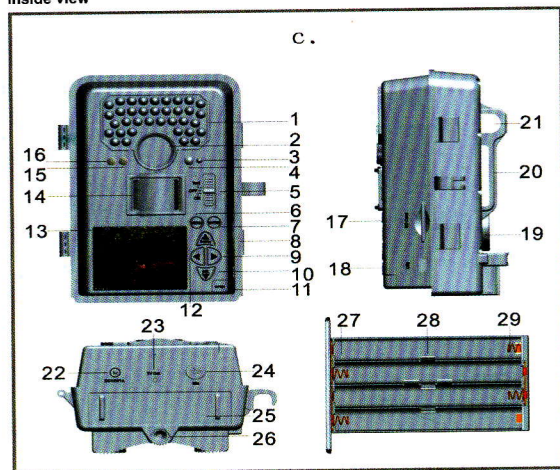
Shell + Inside camera  
Shell Front View



Shell Back View



# Inside view



1	IR LED (36pcs)	11	Battery Compartment Switch	21	A steel wire lock
2	Lens, Filter	12	Left Button	22	DC12V In Port
3	Low battery/No SD Card Indicator	13	2.0inch TFT Screen	23	TV Out Port
4	Work Indicator	14	PIR Sensor	24	Microphone
5	Switch( Test / Off /On)	15	Auto light Sensor	25	Battery Compartment Cover
6	ENTER Button	16	Auto light Sensor 2	26	Tripod nut
7	Mode Button	17	SD Slot (Shot)	27	Positive (+)
8	UP & Replay Button	18	USB Port	28	Battery Compartment
9	Right Button	19	Tripod nut	29	Negative pole (-)
10	Down & Delete Button	20	Strap hole		

## Quick Start Guide

This guide is designed to get you up and running in a matter of moments. To get the most out of this Invisible IR Guard Camera tools, please read the manual thoroughly before operating. If you would like to modify any of the factory Default Settings, except for the Time & Date, please see manual for instructions.

**Cautions\*** Accepts Up to a 32GB SD card for photo storage. Format SD card and SD Card must be installed for the camera to operate.

Insert SD card according to the correct Front and back side of ICON on camera

## Power Supply

The Camera is designed to operate using two different types of battery power options.

### Batteries AA

To supply power for the camera, eight size AA batteries\*8 are needed.

### DC 12V external power

The camera is equipped with an external power jack designed to accept a barrel plug cable of DC 12V adaptor (Input:110~ 240V, 50/60Hz, output:12V/1A~ 2A), solar panel or 12V power bank or storage battery(Sold separately).

**Cautions\*** In The Test mode, the camera will shut down automatically after 30seconds if no operation is done. Please press **MENU** again if you want to continue to work.

### Lighting indicated:

- Switch **Test** mode, Red LED is lighting to identify the capture area.
- No memory — Red/Blue light blink.
- Low power — Blue light blink.
- Switch **ON** mode, LED screen will show countdown 30seconds, Red & Blue light will keep lighting at last 3seconds.

## Power on

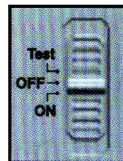
The camera has three basic operation modes:

**OFF mode:** to turn off the camera.(should wait 4s at least then go next step)

**TEST mode:** to set operational parameters.

**ON mode:** to work under surveillance status.

Switch camera to **Test** or **ON** position after inserting SD card and put in 8\*AA batteries or connect power.





### Enter into the TEST Mode

Preview the scene in LCD screen;

Test PIR detection;

Manual capturing (Press "Mode" to choose five modes);

"Replay" Playback Picture and video (Press "DEL" to delete picture or video)

"MENU" Setting camera;

### Manual Capturing

#### ★Hot keys:

Up/Down/Left/Right/ENTER

Press "OK" to confirm your operation

### MENU

In Test mode, press MENU to manually customizing the camera setting

### ENTER

In Test mode, press "ENTER" to capture photos or record videos.

### Enter into the ON Mode

Switch camera to ON position after setting camera

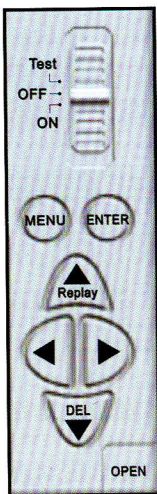
LCD screen will turn off after countdown 30s, Red & Blue light will keep lighting 3s then camera is working. Photos and videos are saved in SD card.

**Cautions\*** In the "ON" Mode, LCD screen will be auto shut down, and hot keys are not workable.

### Replay/Delete picture and video

Press "Replay" to playback, Press "DEL" to delete picture and video

The camera offers the user different options for viewing their images.



### A, Viewing files on computer via USB connection

- Make sure the camera's power switch is in the OFF position.
- The camera will automatically power ON and display the word- USB on the LCD display.
- At the same time, your computer will recognize the camera as a Removable Storage device. You will find it under MY COMPUTER.

### Cautions\* Press "OK" to read SD card or camera work at WEB camera

### B, Viewing files on TV via TV cable connection

- Attach the provided TV out cable to the TV port on the bottom of the camera.
- Insert the other end into the RCA VIDEO IN jacks on the TV.
- Turn on TV
- Switch camera to "Test" mode, press "Replay" to view image.
- Make sure to switch to AUX / VIDEO IN mode on your TV.

### Cautions\* LCD screen will shut down automatically to save power.

\* Press LEFT/RIGHT button to choose image/video. Press OK button to back TEST mode while playing video.

\*Press DEL button to delete one image or video

\* In "MENU"--"Format" to delete all images or videos.

\* Video volume: Turn up/down by TV or computer

\* Live surveillance device

"MENU"--"Power manage"--"Real time Away" to set camera as a live surveillance device. (This function is able to work at an extensible 2.4G wireless device or a WEB camera to live surveillance, capture pictures...etc)

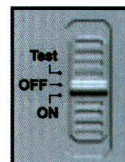
### C, Viewing files on computer via SD card reader

### D, Viewing picture in "TEST" mode after press "Replay"

### Power OFF

Switch to OFF position to power off the camera. And wait more 3seconds.

Please note that even in the OFF mode, the camera still consumes certain power at  $\mu A$  level. Therefore, please remove the battery if the camera will not be used for a long time.



## Menu Overview

In "TEST" Mode, Press "Menu" button to set camera parameters

Setup 1/6	Setup 2/6
▶ Mode	▶ Video Size
▶ Set Clock	▶ Video Length
▶ Digital Zoom	▶ Audio Recording
▶ Image size	▶ TV Out Type
▶ Picture No.	▶ Power Manage
MENU Back ENTER OK	MENU Back ENTER OK
Setup 3/6	Setup 4/6
▶ PIR Interval	▶ Battery CALC
▶ Time Lapse	▶ Frequency
▶ Timer Setting	▶ Camera Name
▶ Time Stamp	▶ Security Enable
▶ Temperature	▶ Latitude
MENU Back ENTER OK	MENU Back ENTER OK
Setup 5/6	Setup 6/6
▶ Longitude	▶ System
▶ Wifi SD	
▶ Language	
▶ Format	
▶ Default Set	
MENU Back ENTER OK	MENU Back ENTER OK

## SG-880V MENU

Code	MENU	Settings
1	Mode	Photo / Video / Timelapse / Hybrid(Camera+Video) / Motion detection
2	Set Clock	MM/DD/YY HH/MM
3	Digital Zoom	OFF 2/3/4 times
4	Image Size	12M/8M/5M/2M
5	Picture No.	1-9 Image Burst (.JPG)
6	Video Size	Full HD1920 x 1080 / HD1280 x 720 (.AVI)
7	Video Length	5-90s
8	Audio Recording	On/OFF
9	TV Out Type	PAL/NTSC
10	Power Manage	Normal/Real Time Away
11	PIR Interval	1s-60M
12	Time Lapse	1sec-24H
13	Timer Setting	Start H:M End H:M
14	Time Stamp	ON/OFF
15	Temperature	Fahrenheit/Celsius
16	Battery CALC	Percentage/Day
17	Frequency	50/60Hz
18	Camera Name	0-9/A-Z 23Digits
19	Security Enable (Password)	ON/OFF 00000
20	Latitude	000.000000 N/S
21	Longitude	000.000000 E/W
22	Wifi Sd Card	ON/OFF
23	Language	English/German/Russian/French/Czech/Swedish/Japanese
24	Format	NO/YES
25	Default Set	NO/YES
26	System	FW Version/FW Update( Use SD card to update FW)

## Camera Setup and Program

### Parameters Setting

User can set parameter with guide information on camera LCD or connect TV to set. All parameters setting should be in "TEST" Mode.

### Power ON and Test Mode

Switch camera to "TEST" position.



In "Test" mode, the shooting information will be display on the screen:

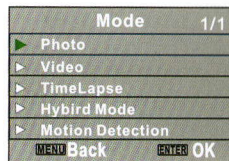


**Cautions\*** Please insert SD card before power on. When there is no SD card or low memory, red light and blue light will blink.

When camera connect with external power, "EXT" will be displayed on the left down corner of LCD screen, Not calculated battery level at Percent/Days.

### Set Camera Mode:

- Slide the switch to "Test" position
- Press the "MENU" button once
- LCD display will show "MODE" on camera status screen
- Press OK button to set "Mode"
- Press UP/Down button to select mode and the option will be highlighted



- Press OK button to save the current setting
- Press Menu button to cancel setting and return to information display

### Cautions\* Five modes: Photo/Video/Time Lapse/Hybrid Mode /Motion Detection

1)Photo: 12mp/8mp/5mp/2mp



2)Video:Full HD 1920x1080/HD 1280x720



3)Time Lapse: 1second-24Hours

(Photo only)(Plot garden watch camera)



4)Hybrid Mode: a photo + a video



5)Motion detection(Video only):

- This mode take video according to detect light movement. It is better to capture for Cold blood animals. Best effective capture distance is in 3meters. (The function is for cold blood animal. If user set camera for security and scouting, please select other four modes. for Cold blood animals, Time Lapse also is ok)



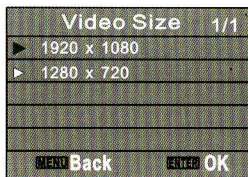


- Press OK button to save the current setting
- Press Menu button to cancel setting and exit

#### Video Size--(FHD)1080/(HD)720

- Slide the switch to "Test" position
- Press the "MENU" button once
- Press UP/Down button to select "Video Size"
- Press OK button to enter "Video Size"
- Press UP/Down button to select Video size
- Press OK button to save the current setting
- Press Menu button to cancel setting and exit

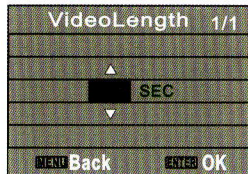
\*Default setting is 1280x720



#### Video Length-- 5-90seconds

- Slide the switch to "Test" position
- Press the "MENU" button once
- Press UP/Down button to select "Video Length" and OK button to enter "Video Length"
- Press UP/Down button to decrease/increase Video Length
- Press OK button to save the current setting
- Press Menu button to cancel setting and exit

\*Default setting is 5s



#### Audio Recording--ON/OFF

- Slide the switch to "Test" position
- Press the "MENU" button once
- Press UP/Down button to select "Audio Recording" and OK button to enter
- Press UP/Down button to select audio
- Press OK button to save the current setting
- Press Menu button to cancel setting and exit

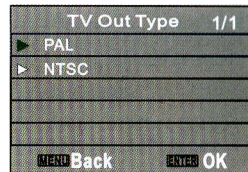
\*Default setting is ON



#### TV Out Type--PAL/NTSC

- Slide the switch to "Test" position
- Press the "MENU" button once
- Press UP/Down button to select "TV Out Type" and Press OK to enter
- Press UP/Down button to select TV out type
- Press OK button to save the current setting
- Press Menu button to cancel setting and exit

\*Default setting is PAL

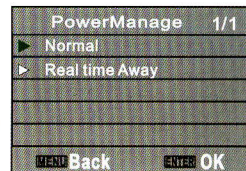


#### Power Manage--Normal/Realtime Away

- Slide the switch to "Test" position
- Press the "MENU" button once
- Press UP/Down button to select "Power Manage" and Press OK button to enter
- Press UP/Down button to select
- Press OK button to save the current setting
- Press Menu button to cancel setting and exit

\*Default setting is Normal

Realtime Away is used to connect TV for real time monitor.

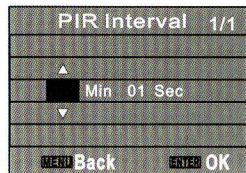


#### PIR Interval--1second-60minutes(PIR motion detection mode)

This parameter means that how long the PIR will be disabled after each triggering in ON mode. During this time the PIR of the device will not react to the motion of human (or animals). The minimum interval is 1second, it means the PIR will be disabled for 1s after each triggering.

\*Default setting is 1s.

- Slide the switch to "Test" position
- Press the "MENU" button once
- Press UP/Down button to select "PIR Interval" and Press OK button to enter
- Press UP/Down/Left/Right button to select
- Press OK button to save the current setting
- Press Menu button to cancel setting and exit

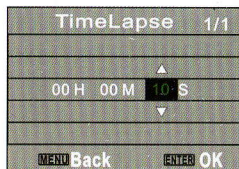


### Time Lapse--10second-24hours (Time Lapse mode)

This Parameter defines camera captures images at a preset time intervals regardless of whether there are motions get detected. This function is only taking picture, no video.

#### \*Default setting is 10s.

- Slide the switch to "Test" position
- Press the "MENU" button once
- Press UP/Down button to select "Time Lapse" and Press OK button to enter
- Press UP/Down/Left/Right button to select
- Press OK button to save the current setting
- Press Menu button to cancel setting and exit



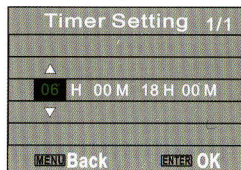
#### Timer setting

This parameter defines a certain time lapse in a day when the camera can be triggered. In the rest of the time the device is shut off. The effective value range from 00:00 (HH:MM) to 23:59(HH:MM)

Timer setting OFF means the camera works all along; **Timer setting ON means the camera works only during the time according to the preset setting.**

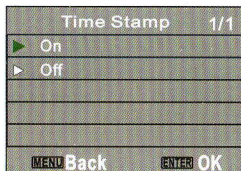
**\*Default setting is 06:00 to 18:00. Camera works from 06:00 a.m. to 06:00 p.m. only.**

- Slide the switch to "Test" position
- Press the "MENU" button once
- Press UP/Down button to select "Timer setting" and Press OK button to enter
- Press UP/Down/Left/Right button to select start time and end time
- Press OK button to save the current setting
- Press Menu button to cancel setting and exit



#### Timer Stamp--ON/OFF

- Slide the switch to "Test" position
- Press the "MENU" button once
- Press UP/Down button to select "Timer Stamp" and Press OK button to enter
- Press UP/Down button to select ON/OFF
- Press OK button to save the current setting
- Press Menu button to cancel setting and exit



This Parameter defines whether the date/time/Pressure/Temperature/Moon Phase/Camera name be stamped on the

pictures and video or not.

**\*Default setting is ON**

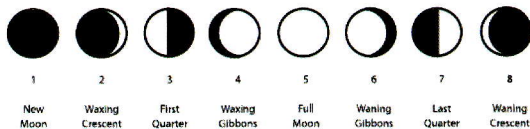
The info strip below will appear at the bottom of the photo/video:

18:46:21 04/21/15 29 73°F 87°F 114 081388S 022 724444E WHZ1

- 1- Time HH:MM:SS 2- Date DD/MM/YY 3- Pressure 4- Temperature(F/C)  
5- Moon Phase 6-latitude 7-Longitude 8- Camera name(4digits)

Symbol	Lunation from to		Actual phase			
	1	5				
	6	10				
	11	14				
	15	16				
	17	20				
	21	25				
	26	29 or 30				

### The Icon for Moon Phase



### Temperature—Fahrenheit/Celsius

This parameter defines the temperature stamp on picture/video is Fahrenheit or Celsius.

**\*Default setting is Celsius.**

Temperature 1/1

► Fahrenheit

► Celsius

MENU Back ENTER OK

### Battery CALC--Percentage/Day

This parameter defines battery power leave, power, "EXT" will be displayed on the left down corner of LCD screen, Not calculated battery storage level at Percent/Days. "100%" means full power

\*Default setting is 100%.

PowerManage 1/1

▶ Normal

▶ Real time Away

Menu Back Enter OK

**Frequency—50Hz/60Hz**

When camera connect adaptor plug, user should set frequency same as local power supply frequency, like TV Out type.

\*Default setting is 50Hz.

Frequency		1/1
▶	50Hz	
▶	60Hz	
<b>EXIT</b> Back		<b>ENTER</b> OK

Camera Name--4digts

The Camera Name stamp on the photos/Videos. Character A to Z, 0 to 9 or space.

\*Default setting is 0000.

Camera Name 1/1

▲

0000000000

▼

Back OK

**Security Enable--ON/OFF**

This function is for user to set a password to protect the camera. Turn "ON" security Enable, key in security code. (Digits 0-9)

\*Default setting is OFF.

Security Enable 1/1

▶ Off

▶ On

**MENU** Back **ENTER** OK

Security Code 1/1

▲

0 0 0 0

▼

Menu Back Enter OK

## Latitude--S/N

This GPS function allows User to manually enter their location from 000.000000N or S to 179.999999 N or S for better and more strategic game tracking. This information will imprint on picture and video.

\*Default setting is 000.000000.

Latitude 1/1

▲

00.000000 S

▼

END Back ENTER OK

Latitude 1/1

▲  
00.000000N  
▼

MEMO Back ENTER OK

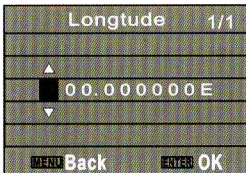
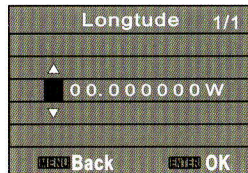
## Longitude--W/E

This GPS function allows User to manually enter their location from 000.000000E or W



to 179.999999 E or W for better and more strategic game tracking. This information will imprint on picture and video.

\*Default setting is 000.000000.

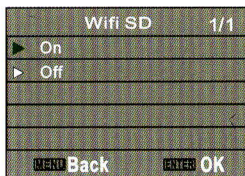


#### WIFI SD card—ON/OFF

This camera supports WIFI SD card. When camera turns "ON" this function and inserts a WIFI SD card, camera works as a router, the user is able to browse and download pictures/videos in WIFI SD card by Cell phone.

WIFI SD card setting is referring to WIFI SD card user manual.

\*Default setting is OFF.



#### Language

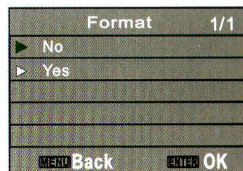
This camera has eight languages, English/German/Russia/French/Czech/Swedish/Japanese

\*Default setting is English.



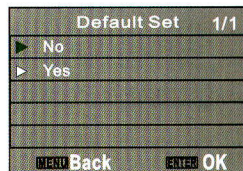
#### Format—NO/YES

This parameter allows deleting all files in SD card. Make sure you have downloaded and backed up all files you want to preserve first.

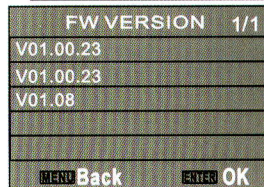
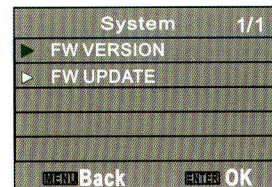


#### Default Set—NO/YES

To reset the camera setting to the default set.



#### System



This parameter allows user check camera FW version and upgrade FW.

Firmware upgrade steps are as following:

1. Ready a SD card and format the SD card
2. Copy New Firmware file in SD card: DRAMPARA.TXT /ISP.BIN/PART01.bin / PART02.bin
3. Insert this SD card in camera, Camera Switch to "Test", press "Menu" button and Up/Down button to select "System"
4. Press Up/Down button to select "FW UPDATE" then press OK button
5. Upgrading information is displayed on LCD screen. Keep camera power on until LCD screen shut down. (Upgrade process needs 2minutes)
6. Wait for 5seconds after upgrading, then switch to "Test" again, check new FW version.

\*Upgrading is needed only when an improved firmware is available.



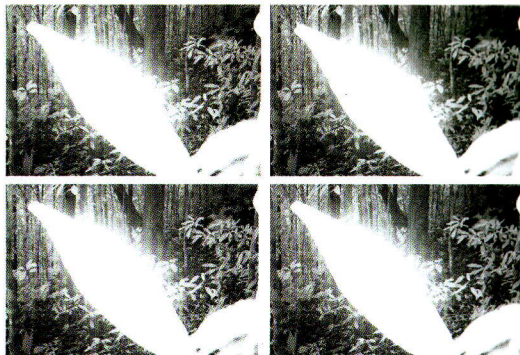
## Setting up the camera in the field

Once all program settings have been setup properly, the camera is ready for field use.

### Getting Started

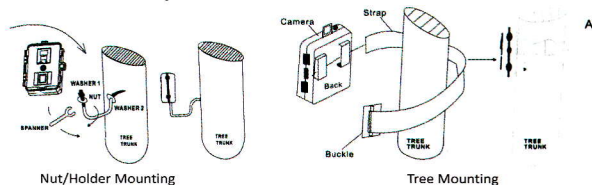
Listed below are some helpful pointers on how to use your camera to get the best results.

- Mount the camera about 0.5~2M high with the camera pointed at a slight downward angle.
- Mount the camera facing north or south NOT east or west due to the rising and setting of the sun could produce false triggers and overexposed images.
- If you're covering a trail, face the camera down or up the trail. Most commercial cameras take one seconds to sense motion/heat and take a picture.
- Be sure to avoid mounting the camera facing east or west as the rising and setting of the sun could produce false triggers and over exposed images. Clear all branches and other debris away from the front of the camera so as not to block the camera lens or PIR sensor.
- You can avoid false triggers, you should adjust it, depend on the object or wild animals' size, moved speed and distance.
- Clear out any brush or weeds in front of camera. This will cause false pictures caused wind or high temperature days.



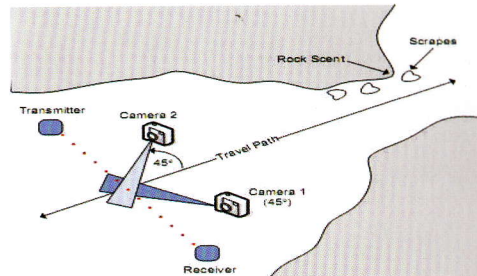
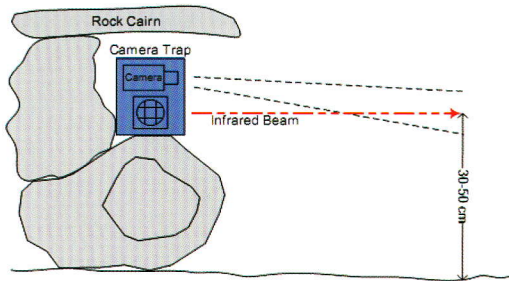
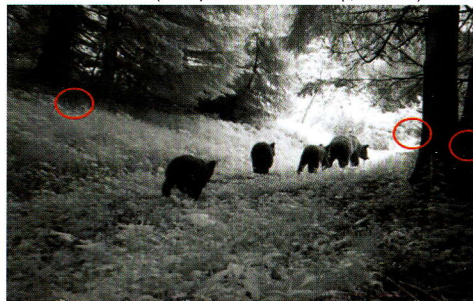
- Double check battery before turning on the camera for use.
- Make sure to insert the Class 10 SD card after setting up the camera.
- Make sure to turn the camera to ON mode (or take out of Test Mode) before you leave.
- Verify time and date is correct.

### Example: Mounting



Mount the camera on the way of animal's feeder point, rest area and excise filed based on animal's Urine, Pugmark, Scrape, Claw mark, Scent-spraying, Prey remain, Rest site, Roar, tract trap, scat etc.

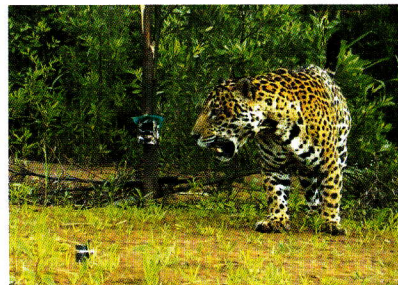
(Example: Animal's tract trap, urine etc)





Put a Hand-made cover on the top of camera to avoid sunshine directly.

(Example: Hand-made plastic cover)





## Appendix I: Default Settings

Code	Parameter name	Default
1	Mode	Camera
2	Set Clock	01/012014 00:00
3	Digital Zoom	1X
4	Image Size	5MP
5	Picture No.	1P
6	Video Size	HD1280 x 720
7	Video Length	5s
8	Digital Zoom	On
9	TV Out Type	PAL
10	Power Manage	Normal
11	PIR Interval	1s
12	Time Lapse	10s
13	Timer Setting	Star: 00H:00M End:23H:59M
14	Time Stamp	On
15	Temperature	Celsius
16	Battery CALC	Percentage
17	Frequency	50Hz
18	Camera Name	0000
19	Security Enable (Password)	ON/OFF 00000
20	Latitude	000.000000 N/S
21	Longitude	000.000000 E/W
23	Wifi Sd Card	OFF
24	Language	English
25	Format	No
26	Default Set	No
27	System	FW Version/FW Update( Use SD card to update FW)

\*Without battery, SD card

## Appendix II: Technical Specification

Display Screen	2.0" Color viewer TFT LCD
Image Sensor	12.0 Mega Pixels Resolution, 2/5 / 8 / 12
Angle	PIR:65°
Lens	F=2.4; FOV=60° ;Max View 62°; Auto IR-Cut-Remove (at night)
Infrared Cut Filter	YES
IR-LED	36PCS (940nm)0-25m/75ft
Memory	SD-card (not included)up to 32GB
Language	English, French, German, Swedish, Japanese & Czech, Russian
Picture Size	12MP=4000x3000 / 8MP=3840x2160 / 5MP= 2944x1656 / 2MP=1920x1080 (JPEG)
Video Size	HD:1920x1080,15fps / 1080x720 ,30fps (AVI)
Audio Recording	Available
Digital Zoom	2x, 3x, 4x
Camera+video	Yes
Password	Yes
Device serial no	Yes
Web camera function	Yes
Time lapse	On/Off
PIR detection	On/Off
Motion detection	On/Off
Trigger Time	0.6-1 s
Triggering Interval	1sec. - 60min. programmable (Available)
Shooting Numbers	1~9 programmable (Available)
Video Length	5-90sec. programmable(Available)
Power Supply	8 x AA Batteries or 12V DC (not included) or solar panel or 12V power bank or storage battery
Stand-by Current	< 0.3mA
Stand-by Time	Up to 6 Months(8*AA)
Power Consumption	170mA(±300mA when 36-IR-LED lighted total:<460mA) Takes up to 40,000 pictures on 8*AA Alkaline batteries
Interface	TV out (NTSC, PAL); USB; SD card holder; 12V DC external
Operation Temperature	-30°C - 60°C (Storage temperature: -40°C - 70°C)
Operation Humidity	5% - 90%
Waterproof spec	IP66
Size	13.5 X 9 x 6cm (Weight:380g)
Security authentication	CE FCC RoHS



### Appendix III: Parts List

Part Name	Quantity
Game Camera	1
USB Cable	1
TV Cable	1
Strap	1
User Manual	1
Warranty Card	1

### FCC Compliance

This equipment has been tested and found to comply with the limits for Class B digital device, pursuant to part 15 of the FCC Rules. These limits are designed to provide reasonable protection against harmful interference in a residential installation. This equipment generates uses and can radiate radio frequency energy and, if not installed and used in accordance with the instructions, may cause harmful interference to radio or television receptions, which can be determined by turning the equipment off and on, the user is encouraged to try to correct the interference by one or more of the following measure:

- Reorient or relocate the receiving antenna.
- Increase the separation between the equipment and the receiver.
- Connect the equipment into an outlet on a circuit different from that to which the receiver is connected.
- Consult the dealer or an experienced radio/TV technician for help.
- Shield USB cable with ferrite must be used with this unit to ensure compliance with the Class B FCC limits.

This device complies with part 15 of the FCC Rules. Operation is subject to the following two conditions: (1) This device may not cause harmful interference, and (2) this device must accept any interference received, including interference that may cause undesired operation.

**Warning:** Changes or modifications to this unit not expressly approved by the party responsible for compliance could void the user's authority to operate the equipment.