

Contents

Features and Functions	1
Appearance and functions	2
GAMEPAD	2
Remote control panel	3
Battery installation diagram for remote control	5
Installation	6
Operation of DVD system	7
System setup	7
Introduction of USB/SD function	9
Menu function setup	9
AV Display	11
MP5 Player	11
Wiring diagram	11
Troubleshooting	12
Attention	13

Features and Functions

- DVD
- Super-slim design
- Digital technique, sharp image and no interference
- FM Frequency scale: FM87.7MHz/FM87.9MHz/FM88.1MHz/
FM88.3MHz/FM88.5MHz/FM88.7MHz/FM88.9MHz/FM89.1MHz.
- Dual IR Transmitter
- Audio/video input and output
- Full function remote control
- USB/SD/Wireless games
- Built-in speakers

Specifications

Size of screen: 10.1 inch

Pixel: 9 inch, 800×3RGB×480

Rated voltage: DC12V(voltage range:10V-14V)

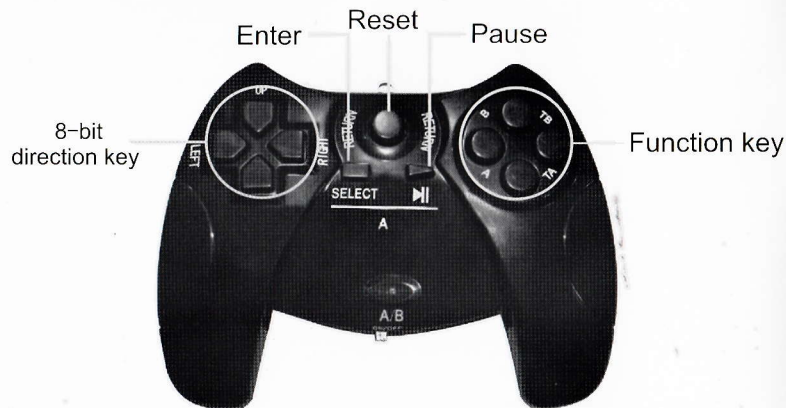
Power: about 12W

Appearance and functions

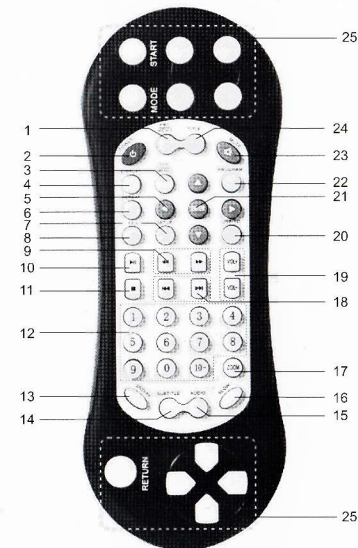


- 1) Power switch and video switch
- 2) Next
- 3) Last
- 4) Disc in/out
- 5) IR window
- 6) Volume-/analogue-
- 7) Menu/play/pause
- 8) Volume+/analogue+
- 9) Remote window
- 10) Disc in/out mouth
- 11) USB port
- 12) SD port
- 13) Earphone jack
- 14) Video 2 input
- 15) Power/AV input/output
- 16) DC 12V Jack

GAMEPAD (Optional)



Remote control (Standard)



- | | |
|---|---|
| 1. PBC/MENU | Open/close the PBC menu in playing VCD2.0 and SVCD. |
| 2. POWER | Power on/off |
| 3. TFT/MENU | Switching the menus of LCD brightness, contrast,
definition, color and tint. |
| 4. DISPLAY | Display the disk information and playing time. |
| 5. Direction key(◀▶▶▶) | Direction selecting key. |
| 6. REPEAT | Multiple modes of repeat play shall be available. |
| 7. SETUP | Open/close DVD setup menu. |
| 8. OPEN | Disc eject |
|
 | |
| 9. Fast forward/
backward play | Fast forward or backward. |
| 10. Play/Pause | Play or pause |
| 11. Stop | Stop key |
| 12. Number key | Number selection |
| 13. DVD/AV | DVD/AV switching |
| 14. SUBTITLE | Subtitle switching, used for SVCD, DVD and MP4 disks
with multiple subtitles only. |
| 15. AUDIO | Language switching key, used for SVCD, DVD and MP4
disks with multiple languages only, channel switching
key for VCD. |
|
 | |
| 16. SLOW | Slow playing. |
| 17. ZOOM | Zoom in/out, multiple modes. |
| 18. Previous/Next | Select the previous or next track. |
| 19. VOL-/VOL+ | Adjust the volume. |
| 20. USB/SD | Switching DVD/USB/SD CARD |
| 21. ENTER | Confirmation |
| 22. PROGRAM | Track programming play. |
| 23. MUTE | Open/close the sound. |
| 24. TITLE | Press the key to return to the title menu in playing DVD disk. |
| 25. Wireless game control key | Wireless game control key area. |

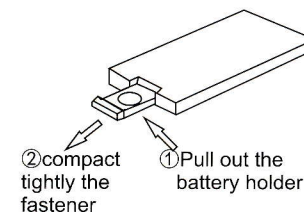
Remote control (Optional)



Battery installation diagram for remote control

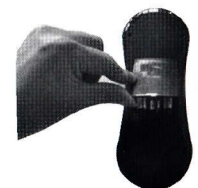
Attention:

1. do not directly touch infrared light
2. do not press remote control when disassembling the battery cover of remote control
3. take out battery when rarely using
4. normally, battery life is about one year. replace battery when the remote control is not sensitive.



1. please open the battery cover on the back of the remote control before using it.

3. we can begin to use remote controller after battery ready finish and close the battery cover.



2. please loading three NO.7 battery, please note have bellows side is negative.

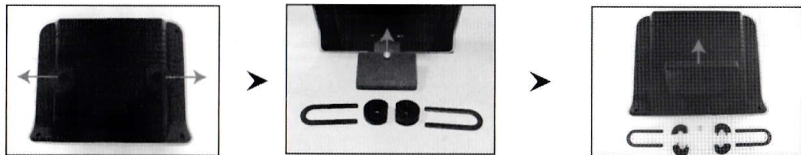


Cautions:

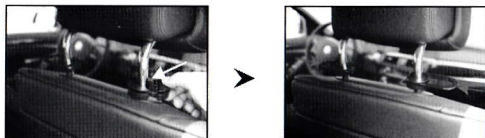
In order to prevent the battery leakage, if the remote controller shall be not used for long time (longer than one month), please take out the battery, if there is liquid flowing out, wipe away carefully and then reload the new battery.

Installation

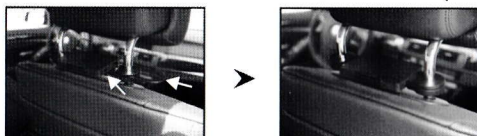
- 1、Take out the machine,remove the screws, Unplug support plastic parts and take off the U-shaped sheet iron on both sides of the bracket,then pull out the plastic ring.



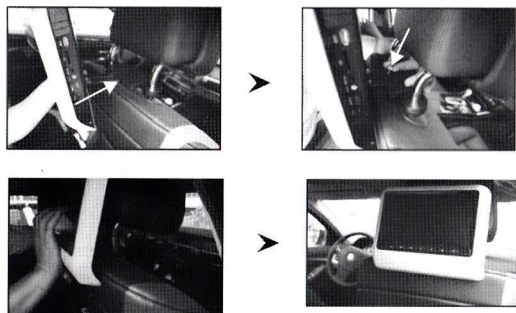
- 2、Rising the original headrest, then according to the diameter of the original car headrest iron pole to choose the right plastic ring and apart it and grip on the original car headrest irons(the ring plane toward to the middle of the two iron),then insert the U-shaped iron plates to fixed the two plastic ring.



- 3、put the plastic bracket parts in between two iron plates,at the same time,push the U-shaped iron plates and insert them into plastic bracket, and adjust it to make sure it be in the middle of two iron poles



- 4、Hold up unit,insert the metal plate in black of the unit into plastic bracket parts, then adjust it to the right angle and fix it tightly,at last lower the original car headrest to the appropriate position.



Operation of DVD system

Play DVD/DCD/CD

when put the disc into the DVD mouth,pls keep the label toward back, Automatically play

Press on panel or on remote control to stop.

Press on panel or on remote control to pause.

Play MP3

Insert the file storage media into the machine to autoplay

Press on remote control to stop.

Press on panel or on remote control to pause.

Press on panel or on remote control when pausing to replay

Replay

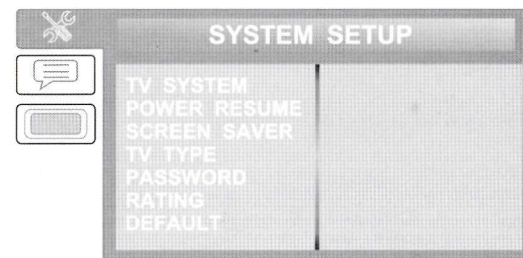
1.Press to repeat one or more songs

2.press numeric key to directly play the specified song

System setup

Press button of setup on remote control to enter system and set menu.

Press on remote control to choose modification item and press to enter,as below picture.



- 1.TV system: set DVD output image format and three formats of NTSC/PAL/AUTO can be chosen.
- 2.resume play: switch of resuming play after power off
- 3.screen saver: switch of screen protection icon
- 4.screen picture ratio: choose image output ratio as per request
- 5.password: set new password and the initial password of system is [0000]
- 6.level set: set parents lock as per different levels
- Remark: Default rating password is [0000]
- 7.default setting: restore factory's initial settings



- 8.language showed on the screen: choose the language showed in the menu as per request
9. audio language: set disc output language
10. subtitle language: set disc subtitle language
- 11.menu language: set menu language of disc
- Remark: the disc must support audio language, subtitle language and menu language.
- 12.Video setup:Set DVD,video screen display effect.



introduction of USB/SD function

- 1.Enter: press **SD** under DVD mode and switch to the mode you need in DVD,USB and SD mode.
- 2.Exit: press **SD** or **SD** under USB/SD mode and then switch to DVD mode.

Menu function setup

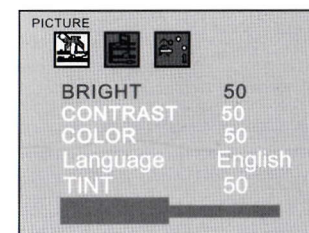
In AV1 or AV2 state Press **Menu** on panel or **TFT MENU** on remote control to enter the main menu. Then press **Left/Right** on panel or **Up/Down/Left/Right** on remote control to setup and adjust

Main menu include below parts

Image
Volume
Function

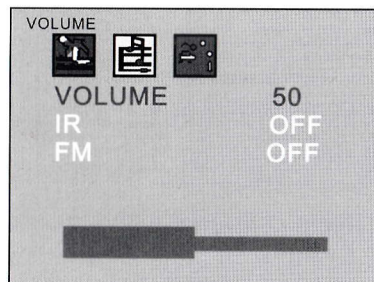
Detailed setup as below diagram

1.image setup



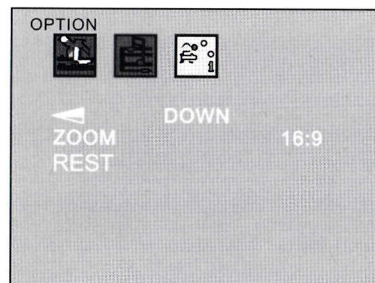
1. Brightness
2. Contrast
3. Color
- 4.Language
- 5.Tint

2. Volume setup



1. Volume adjust
2. IR Setup
3. FM Setup

3. Functional setup



1. Rotation
2. image display mode
3. Reset

2.audio

Press $\langle \rangle$ on panel or $\text{vol}+$ $\text{vol}-$ on remote control to set it accordingly.

a: volume

Audio control, (you can choose infrared/speaker/radio/speaker, speaker/radio, infrared/speaker/radio, radio, infrared, infrared/speaker, infrared/radio)

3. Functions

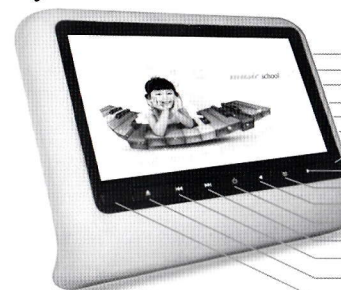
Press TFT MENU on panel or \uparrow \downarrow on remote control and the screen displays below menu pictures, then press $\langle \rangle$ on panel or \leftarrow \rightarrow on remote control to set it accordingly

AV Display



- Remote control window
- volume+/Analog quantity+
- MENU
- volume-/Analog quantity-
- Power switch
- Image Mode
- Video mode
- Video Switch
- IR window

MP5 Player



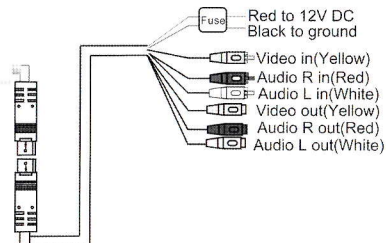
- USB interface
- SD interface
- Headphone jack
- Video 2 input
- Data line interface
- Cigarette lighter power jack
- Remote control window
- volume+/Analog quantity+
- MENU
- volume-/Analog quantity-
- Power switch
- Image Mode
- Video mode
- Video Switch
- IR window

wiring diagram

①



②



Troubleshooting

Troubles	Solutions
No sound and image	power is disconnected; the machine is not turned on
No image	disc is scratched; signal wire is disconnected
No sound	volume too low or the volume setup is not workable
Black screen	incorrect setup of image luminance and contrast; Undervoltage
Blurring and unstable image	disc is scratched
Color cast	function menu setup is incorrect; weak signal
No power	voltage is not accurate: check interconnect circuit; Fuse is disconnected: change fuse specification
No image after loading the disc	only audio frequency for the disc; disc is scratched; disc format is not supported
Instable sound caused by vibration	DVD is dirty or seriously damaged
Instable sound even with no vibration	disc is dirty or scratched; clean or replace the disc

Attention

1. Do not put the machine in the rain or damp environment lest outbreak of fire or any damage to machine.
2. Do not repair the machine by yourself. Please turn off the machine and inform us if any problem found, the factory or the agent will arrange specialized personnel to disassemble and repair the machine for you.
3. Please keep the machine away from dampness, dust, oil and straight sunlight.
4. Do not use diluents or other chemical cleaner when cleaning the machine.
Please clean the machine by soft cloth with special cleaner.
5. Please keep the machine in a good environment. The storage temperature for this machine is from -20°C to 70°C and the operating temperature for this machine is from -10°C to 60°C.
6. Do not play without the support of disc, this machine supports DIVX / MPEG4 / DVD / DVD + R / SVCD / VCD / DVCD / CD / MP3 / WMA / CD - R / RW / HDCD + _R / JPEG or CD - ROM7.
7. Please prevent the machine from the influence of other equipment.
8. For your safety, please do not turn on or operate this machine when driving as it may be illegal in some countries and regions.
9. Safe power supply: DC12V(voltage range:10V-14V).

Attention

There may be some small and bright spots on the screen. This is a common technical matter and does not indicate any quality problem of this machine.