



Quick Setting Guide

Magic 4G

Mini 3G/4G WiFi Router Power Bank

<http://www.vonets.com>

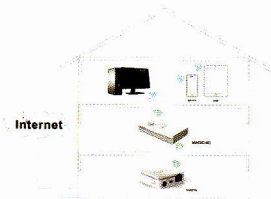
TEL:0086-755-26642519/26645879

Shenzhen HouTian Network Communication Technology Co.,Ltd

Product Introduction:

Magic 4G Support 4 kinds of functions

1. WiFi Repeater (Magic 4G) : is a functional device that assists the Internet communication gateway to expand wireless coverage area. It is mainly used for expansion of wireless network signal and area coverage to make sure the smooth running of home wireless network.



2. 3G/4G WiFi Router (Magic 4G): automatically connects to ISP's 3G/4G WiFi data network by an external 3G network card, that creates a "hot spot" 3G/4G to WiFi for customers, so that more than one person enjoy the simple, convenient WiFi network at the same time.



Declaration

Copyright © 2014 Shenzhen HouTian Network Communication Technology Co.,Ltd

All rights reserved, with retained ownership

Without Shenzhen HouTian Network Communication Technology Co.,Ltd written authorization, any company or personal can't copy, writer or translation part or all contents. Can't do commodity distribution for any commercial or profitable purposes by any ways(electricity, mechanical, photoprint, record or other methods).

VONETS is the registered trademark of Shenzhen HouTian Network Communication Technology Co.Ltd. The other all trademarks or registered trademarks mentioned in this documents are belong to the individual owners. The product specifications and information technology mentioned in this manual are just for reference, if any updates, without other notice. Except for special agreements, this manual is just for user guidance, any statements, information and so on in this manual can't constitute the warranty of any forms.

Tips:

1. When you need reset the device, the device must be powered, long press the button for 5 seconds, the green light will blink a few times, the device will reset automatically
2. The relevant function of the buttons:
 - (1) The device power is not turned on, one-touch the button, the charging output is allowed, outside of the battery indicator (blue light) light.
 - (2) The device power is powered off, long press the button for 5 seconds, the device will be powered on.
 - (3) The device is powered on, long press the button for 5 seconds, the device will reset automatically.
 - (4) The device is powered on, one-touch the button, the device is powered off, the all indicators are off.

Chapter 1 Quick setting Guide of WiFi Router Mode

1. Connect Magic 4G

Before configuration of Magic 4G, please connect to Magic 4G by notebook, smart phone, IPAD and other terminal devices.

- The default WiFi SSID: VONETS_The last six characters of product MAC address.
- The default WiFi password: 12345678.

Tips:

- (1) If you connect Magic 4G by wireless, please disable the local connection of computer.
- (2) If you connect Magic 4G by wired, please disable the wifi network of the Computer.
- (3) The current mode of Magic 4G is router mode, and the method of WAN port connection is not WiFi connection, the computer can only use a wireless way to connect Magic 4G (routing mode, WAN port connections default to DHCP).
- (4) Set your computer to obtain an IP address automatically, see drawing below:

3. Hotel Mode(Magic 4G): It is a truly plug and play wireless router. Stay for a business trip or traveling, you just need to plug the network cable that provided by the hotel room into the Ethernet port of Magic 4G, and then plug Magic 4G into an electrical outlet, then the whole room is already a Wi-Fi wireless coverage. At this point, you can take out your cell phone, Pad or any other devices that can support Wi-Fi wireless Internet access to share wireless Internet access anywhere in the room, all without any settings.

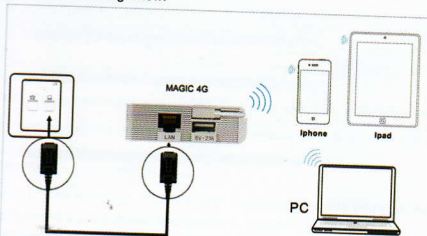


4. Power Bank (Magic 4G) : 1A/2.1A intelligent charger function, low noise, automatically fit for most smart phones, tablet PCs



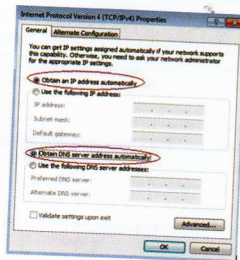
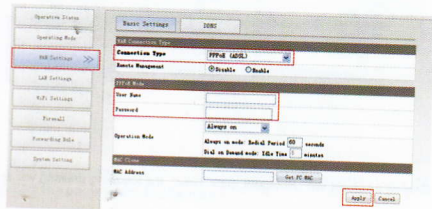
3. Hotel Mode

Magic 4G is a play and plug WiFi Router, only connect the network cable provided by hotel to the Ethernet port of Magic 4G, you can surf the web, without any other settings. See the drawing below:



4. Magic 4G uses PPPoE dial-up connection to Internet access

Magic 4G is a play and plug WiFi Router, only connect the network cable provided by hotel to the Ethernet port of Magic 4G, you can surf the web, without any other settings. See the drawing below:



2. Operating Mode

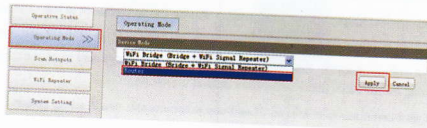
(1) Open the browser, input <http://vonets.cfg> then log in the interface, enter user name and password, click Enter, in the pop-up screen, click "Normal into" button, enter Magic 4G configuration interface.

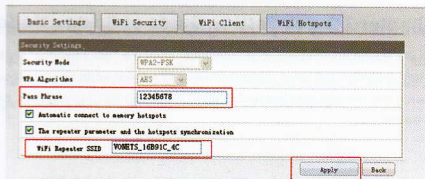


Tips:

The default user name and password is : admin

(2) Click the "Operating Mode" button in the left, choose Router mode, click Apply, see drawing below:



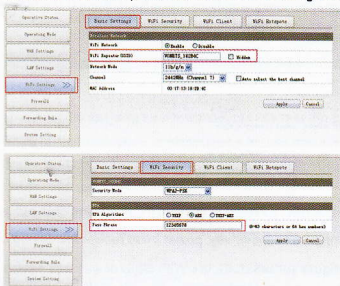


(4) Input the correct password, and confirm it is correct one, then click "Apply" button.

Tip: After configuration successfully, the device must be powered off and reboot.

6. WiFi Settings

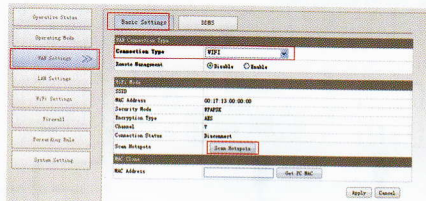
After entering the webpage, click the WiFi Settings in the left, you can revise SSID, password and other WiFi parameters, see the drawing below:



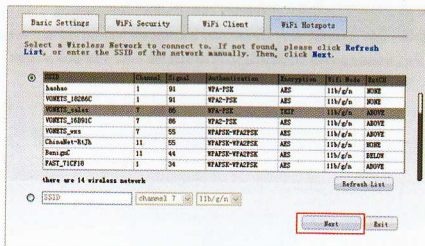
Tip: After configuration successfully, please reboot the device(Magic 4G) to make sure the parameters to effective.

5. Magic 4G uses WiFi method to Internet access

(1) Enter the configuration interface of Magic 4G, click "WAN Settings", choose the Connection Type "WiFi", click "Scan Hotspots", see drawing below:



(2) After the jump page will appear automatically scan window, you can search the WiFi Hotspots opened the SSID broadcast signal around, see the drawing below:



(3) Choose a correct WiFi Hotspots, click "Next", the following drawing will appear:

Chapter 3 Quick Setting Guide of 3G/4G Router

Magic 4G plugged with USB 3G / 4G network card, turn on the device, Magic 4G will automatically switch to 3G / 4G routing mode, users do not need any settings to share 3G / 4G wireless network, as shown below:

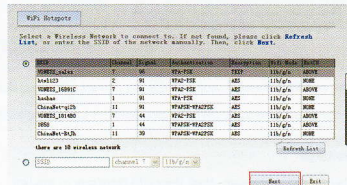


Tip:

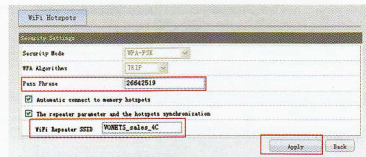
- (1) when the green light is flashing slowly status, proves that the products is 3G / 4G dialing up connection.
- (2) when the green light in flash quickly status, proves that the product dialing up connection is successful.
- (3) the user using a wireless device to connect Magic 4G, should pay attention to:
 - WiFi SSID (wireless name) factory default values: VONETS_ last six characters of product MAC address.
 - wireless password default: 12345678

Chapter 2 Quick Setting Guide of Bridge Mode

(1) Into the Magic 4G configuration interface, click the "WiFi Search" button on the left, the page will jump and automatically appear scanning window, you can search around wireless hotspots signal that open SSID broadcast, as shown below:



(2) Choose a proper wireless signal and click Next, appear the following interface:



- (3) Enter the correct password, confirm it correct and click submit button
- (4) After configure successfully, power off to reboot the device

Tip: After configure successfully, the WiFi SSID of wireless device is the name Original SSID_last two of MAC address, hot spot password is consistent with the source password, the user can also change the SSID and password in WiFi repeater option.

Chapter 4 Magic 4G supported 3G/4G card model

Brand	Model	Device Type
HUAWEI	122	CDMA2000
	189	
	167	
	1261	
	177	
	156	
	EC167	
	EC1260	
	E1750	WCDMA
	E180	
	E3131	
	E353	
	E392u-92	TD-LTE
	E392u-12	FDD-LTE
	E398	
ZTE	AC59	CDMA2000
	AC583	
	AC2787	
	AC586	
	AC2746	
	AC582	
	AC2736	
	MF668A	WCDMA
	MF656A	
	MF631	
	190	
ETON	(ITON) TU930-EC4.3	CDMA2000
	(ITON) TU930 (WF4.2)	
	(ITON) TU930 (WF6.4)	WCDMA
Vtion	(Vtion)E1916	CDMA2000
	(Vtion)E1920	
	(Vtion)U2916	WCDMA
	(Vtion)U1920	
	(Vtion)U1916	
Freedom-e	W6	WCDMA
	W8	
	U8	CDMA2000