



## VAP11N

### 150M Mini WiFi Bridge

## Quick Setting Guide

www.vonets.com

TEL: 0086-755-26642519 / 26645879

Shenzhen HouTian Network Communication Technology Co.,Ltd

VONETS

150M Mini WiFi Bridge VAP11N

### Declaration

Copyright © 2012 Shenzhen HouTian Network Communication Technology Co.,Ltd

All rights reserved,with retained ownership

Without Shenzhen HouTian Network Communication Technology Co.,Ltd written authorization,any company or personal can't copy writer or translation part or all contents.Can't do commodity distribution for any commercial or profitable purposes by any ways(electricity,mechanical,photoprint,record or other methods).

VONETS is the registered trademark of Shenzhen HouTian Network Communication Technology Co.,Ltd mentioned in this manual are just for reference,if any updates,without other notice.

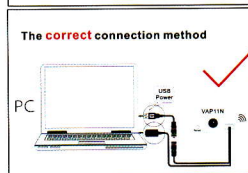
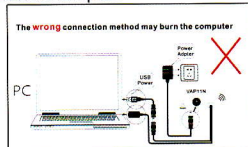
Except for special agreements,this manual is just for user guidance, any statements,information and so on is this manual can't constitute the warranty of any forms.

VONETS

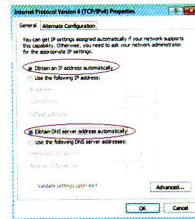
150M Mini WiFi Bridge VAP11N

### Chapter 1 Quick Setting Guide

#### 1. Connect the computer



Set computer IP address to automatically(Generally,NO need to set),please see the words in the red circle of the following picture:



2. Open the IE browser, enter <http://vonets.cfg> virtual domain name setting (VDNS)

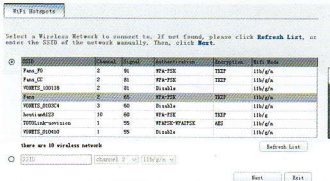


Remark:

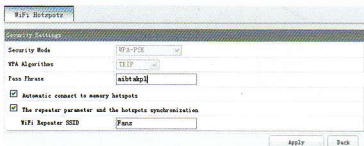
Enter domain name, then enter the login page will appear, the default admin and password is admin.

3. Scan Hotspots

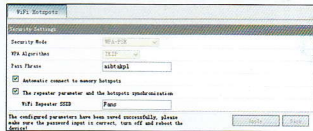
After entering the IE browser, the WiFi hotspots window will appear, can search the WiFi hotspots signal that opened SSID broadcast around, please see the following:



- ➡ Choose a correct WiFi signal, then click Next, the following interface will appear:



- ➡ Enter the correct password, confirm it is correct one, then click Apply button



- ➡ Click Apply button, the above interface will appear, the configured parameters have been saved successfully, please make sure the password input is correct, turn off and reboot the device.

Remark: After configured successfully, the WiFi name and password of the device are the same as the source hotspot's parameters, users can go to WiFi Repeater menu to change SSID and password.