

Android 4.4 Operation System

Smart Car Computer Player

Usual Manual



VER №:Android4.4-V1.0

Welcome!

Thank you for purchasing our company multimedia player! To operate the unit correctly, please read the owner's manual carefully before using the unit. Keep these instructions and retain this booklet for future reference!

Specification

General

Power Requirements	11.5~14.5V
Load Impedance	4Ω
Max. Power Output	45W*4
Tone Controls	±8dB(Bass 100Hz, Treble 10KHz)
Mounting Dimensions	Approx. 178×100×160mm(dxwxh)
Resolution	800×3(RGB)×480

DVD Disc Specation

Disc Played	DIVX/MP4/DVD, VCD, MP3, CD, CD-R, CD-RW, PICTURE-CD
Video System	AUTO, PAL, NTSC
Mounting Angle	0 ~+/-30°

Video Specation

Video Played	(MP5) RMVB, AVI, WMV, 3GP/MP4, MOV, MPG, VOB, MKV, FLV, TS, TP
Video System	16:9 Letter Box and 16:9 Pan Scan
Video Output Level	1.0Vp-p 75 ohms
Horizontal Resolution	500

Audio Specation

Audio Played	MP3, MP2, WMA, AAC, OGG, WAV, FLAC, APE
Maximum Output Level	2Vrms(+/-3dB)
Frequency Response	20 to 20 KHz
Signal-to-noise Ratio	85 dB
Separation	80 dB

AM Tuner Specation

Frequency Range	522-1620(Europe/China), 530-1710 (U.S.A)
IF Range	450MHz
Usable Sensitivity(-20 dB)	25 Db

FM Tuner Specation

Tuning Range	87.5-108(Europe/China), 87.5-107.9(U.S.A)
IF Range	10.7MHz
Usable sensitivity(-30dB)	5dB
Signal-to-noise-Ratio	60dB
Stereo Separation	30dB(1KHz)

Attention

Please use the device according to the safety precaution below, to avoid possible legal responsibility and the loss risk

- 1、Please read and learn all the instructions before using the device.
- 2、Please comply with local traffic rules, pay attention to driving safety and try to reduce or avoid long time operation while driving.
- 3、Please suggest you find professionals to install, repair this product.
- 4、The 3G network referred in this manual is WCDMA/UMTS/HPDA network, please choose proper SIM card for this device.
- 5、Please do not put the device in high temperature and damp environment.
- 6、Please protect the screen. Please switch off before cleaning the machine and use soft cloth to clean the display panel, Do not use liquid soap, cleaner spray or volatile chemicals.
- 7、The device may become much hot after long time running. It's normal in most instances.

Main Function Description

- 1、6.2/7.0/8.0 inch 800*480 HD LCD Display and 3D dynamic revloving interface, With and Android operation system (Android 4.4:ARM Cortex A7 Dual Core ,1.2GHZ CPU ,1GB DDR3 RAM , 8GB NAND Flash).
- 2、Capacitive touchscreen.
- 3、Support format:
Disc:DIVX,MP4,DVD,VCD,CD,CD-R±RW,DVD-R±RW
Video:(MP5) Rm vb,AVI,WMV,3GP/MP4,MOV,MPG,VOB,MKV,FLV,TS,TP
Audio:MP3,MP2,WMA,AAC,OGG,WAV,FLAC,APE
Image:JPG,BMP,PNG,GIF,TIFF
- 4、Built-in AM/FM/RDS receiver system 30 stations memory.
- 5、Built - in DAB digital radio system. (optional)
- 6、Auto store & preset scan.
- 7、System language: Simplified Chinese, Traditional Chinese, German, English, Spanish, French, Italian, Japanese, Korean, Dutch, Polish, Russian, Czech, Norwegian, Bulgarian and more.
- 8、Support background wallpaper free choice switch.
- 9、Support Boot-Pictures or car logo can freely choice switch.
- 10、Date、Time、Week reveal function.
- 11、USB/SD/MMC interface.(T-Flash up to 32GB)
- 12、45W * 4 high power output.
- 13、Audio input & output, Vidio input & output.
- 14、Rear camera input, Parking vedio input.
- 15、Built-in GPS Navigation system.
- 16、Built-in WIFI,supports connected 3G WCDMA SIM cards. (3G Dongle optional)
- 17、Support connected IPOD, touch screen control,and support give recharge for IPOD ,
- 18、Built-in Analog TV system (optional item: DVB-T、ISDB-T etc).
- 19、Built-in Bluetooth 3.0 function: Direct Dialing、Caller ID、Phone-book、BT mucic etc.
- 20、Universal steering wheel control.
- 21、Can-Bus information. (optional)
- 22、Connect OBD2. (optional)

Front Panel Operation

1. **SRC**: press it can turn on power, then press it into switch mode, long press it turn off power.
2. **MUT-VOL**: press knob can mute; pinning into adjust volume
3. **NAVI**: press it enter navigation, press the key for another time to exit navigation display, now navigation will continue working in the background
3. **HOME**: Press it return to cellphone main interface
4. **PREV** (Previous / Back): Press it can return to the previous interface
5. **BT**: Press it enter Bluetooth mode
6. **SEEK**: Turn the knob can switch program

Remark: Any buttons on the Panel can turn on machine power. But if you will turn off power, you must long press SRC button!

Main Interface Introduction

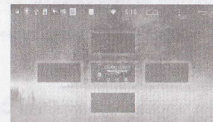
3G Signal Home Menu Previous (Back)
Wifi Signal



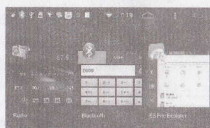
Main Interface



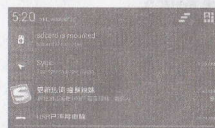
Touch [Home] can display Menu



Press Home Button or short touch can narrow main interface display



Long touch [Recent Apps] can appear Recent Apps



Pull-down Menu



Long click APP icon can appear APP Treatment methods: Edit, Remove (Cancel from main interface), APP Info, Uninstall.

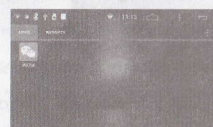
APPS Introduction



APPS-P1



APPS-P2



APPS-P3



Widgets-P1

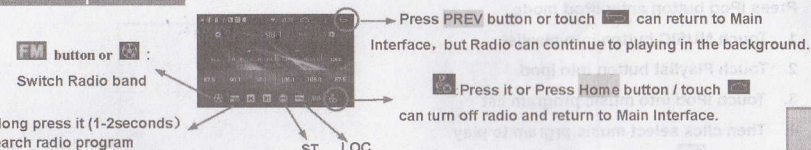


Widgets-P2

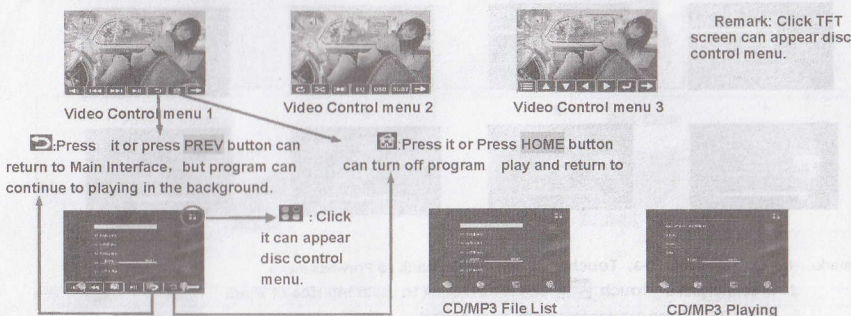


Widgets-P3

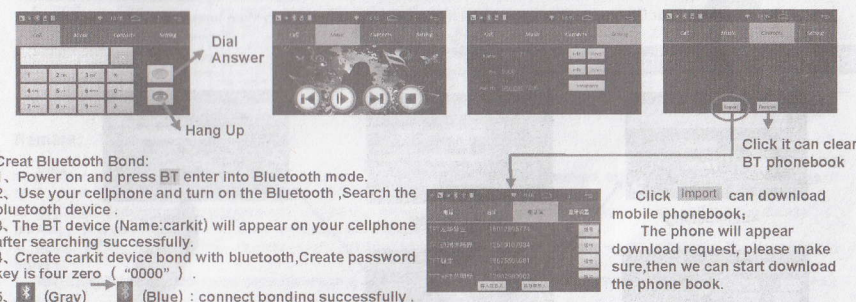
First . Radio Operation



Second . DVD Operation

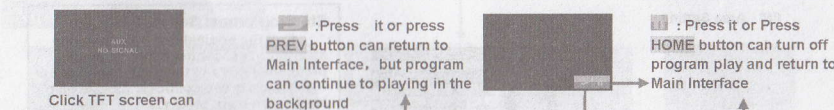


Third . Bluetooth Operation

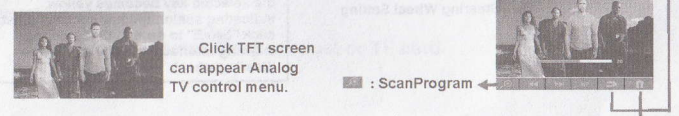


- Great Bluetooth Bond:
1. Power on and press BT enter into Bluetooth mode.
 2. Use your cellphone and turn on the Bluetooth, Search the bluetooth device.
 3. The BT device (Name: carkit) will appear on your cellphone after searching successfully.
 4. Create carkit device bond with bluetooth, Create password key is four zero ("0000").
 5. [Gray] (Blue): connect bonding successfully.

Fourth . AUX Operation





Fifth . Analog TV Operation


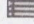




Sixth iPod Operation

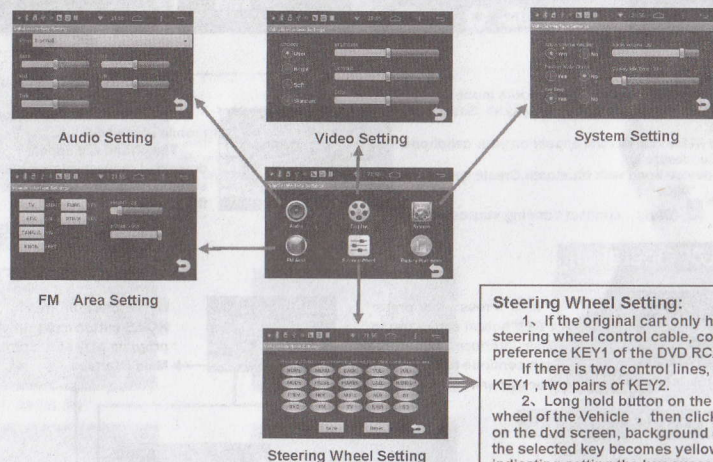
Press iPod button enter iPod mode.

1. Touch MUSIC button into playlist
2. Touch Playlist button into iPod
3. Touch iPod into music program list
4. Then click select music program to play
5. Touch  can appear control menu, touch  appear next page control menu



- Remark:
1. When operation 1~3, Touch  can return back to Previous menu.
 2. In control menu, Touch  can return back to main interface of iPod.
 3. Touch DVD screen can appear control menu of iPod.
 4. : Press it or press PREV button can return to Main Interface, but iPod program can continue to playing in the background.
 5. : Press it or Press HOME button can turn off iPod play and return to Main Interface.

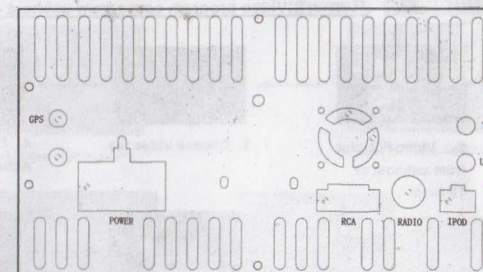
Seventh. Vehicle Interface Setting Operation



Steering Wheel Setting:

1. If the original car only have one steering wheel control cable, connect preference KEY1 of the DVD RCA lines .
If there is two control lines, one pair KEY1 , two pairs of KEY2.
2. Long hold button on the steering wheel of the Vehicle , then click key icon on the dvd screen, background color of the selected key becomes yellow, indicating setting the key success. Last click "SAVE" to save it. Exit steering learning interface, the key role of the steering wheel.

Eighth.Circuit Connection



POWER Cable

RCA Cable

No	Model	Color	No	Model	Color	No	Model	Color	No	Model	Color
1	FR+	Grey	11	RL+	Green	1	NC		2	NC	
2	FR-	Grey+Black	12	RL-	Green+Black	3	NC		4	NC	
3	FL+	White	13	RR+	Purple	5	NC		6	NC	
4	FL-	White+Black	14	RR-	Purple+Black	7	NC		8	NC	
5	ACC	Red	15	GND	Black	9	FR OUT	Red	10	Audio GND	Black
6	ANT-CONT	Blue	16	BATT +12V	Yellow	11	FL OUT	White	12	Audio GND	Black
7	LED KEY	Orange	17	AMP-CONT	Blue+White	13	AUX L IN	White	14	AUX R IN	Red
8	CAN-TXD	White+Black	18	CAN-RXD	Green+Black	15	AUX V IN	Yellow	16	Audio-V GND	Black
9	KEY1	Purple	19	KEY2	Grey	17	V OUT 2	Yellow	18	V OUT 1	Yellow
10	BRAKE	Pink	20	BACK	Brown	19	CCD V IN	Brown	20	Audio-V GND	Black

Remark:

1. ACC(color: Red), BATT +12V(color: Yellow): This two lines can not be reversed, otherwise don't saved settings of DVD. don't save radio station phenomena after machine shutdown .
2. BRAKE: Connect car handbrake line .(When you driving, you can't watch vedio. When only pull the handbrake parking, you can watch vedio, otherwise affect driving safety)
3. FL+/-, FR+/-, RL+/-, RR+/ -: Speaker of the positive and negative can not pick the wrong, otherwise the sound is not normal.
4. ANT-CON: If the original radio antenna of car is active, we should take the DVD ANT-CON, otherwise the antenna has no effect.

Ninth.Music Operation

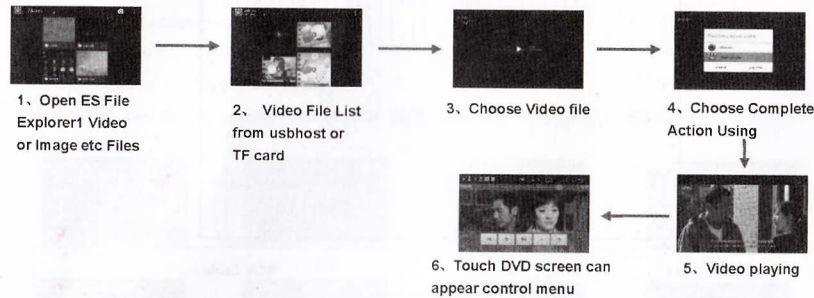


Remark :

Music program come from ushhost or TF card.

Tenth.UHD Player Operation

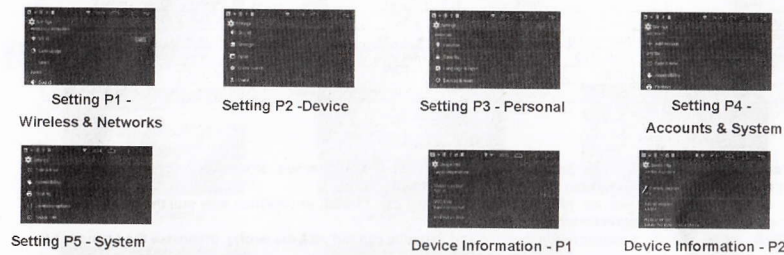
(Remark:Video program come from ushhost or TF card.)



Eleventh.Brower Operation

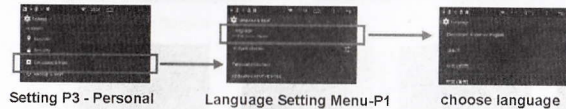


Twelfth.Setting Operation

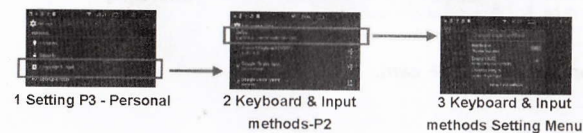


Thirteenth.Setting-Language & Input

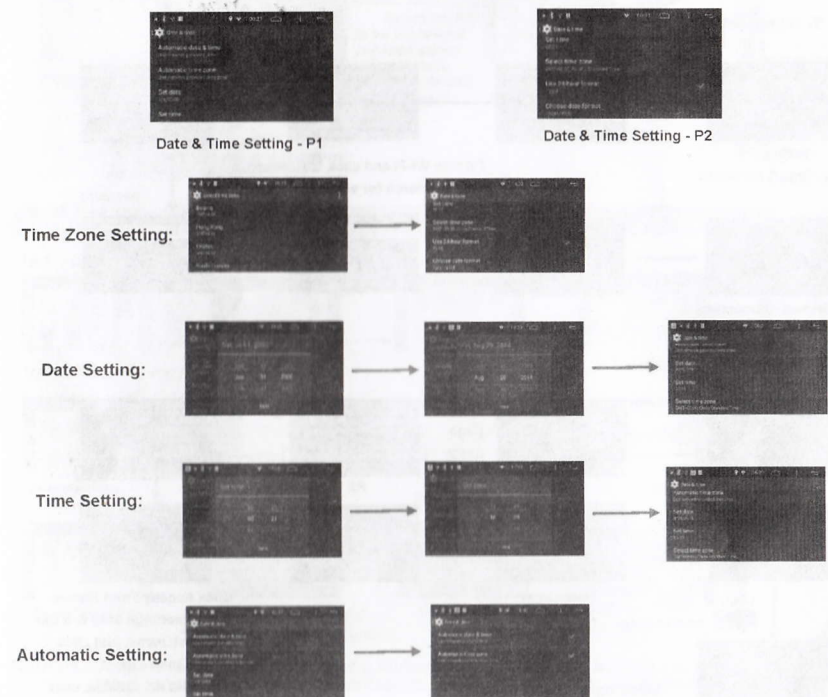
13.1 System Language Setting



13.2 Keyboard & Input methods

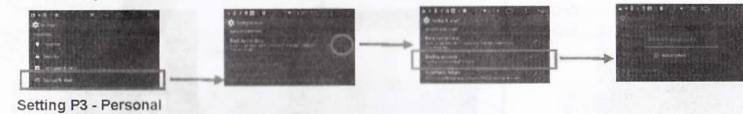


Fourteenth.Date & Time Setting Operation

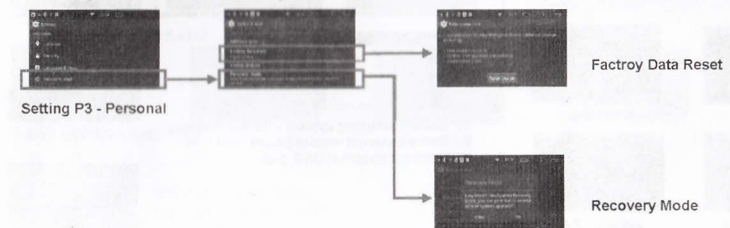


Fifteenth.Back & Reset Operation

15.1 Back Up Data

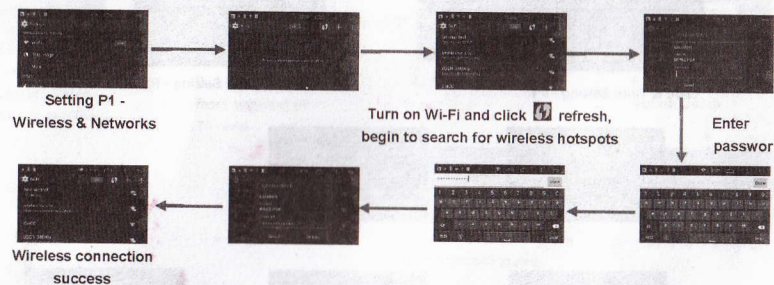


15.2 Factroy Data Reset & Recovery Mode

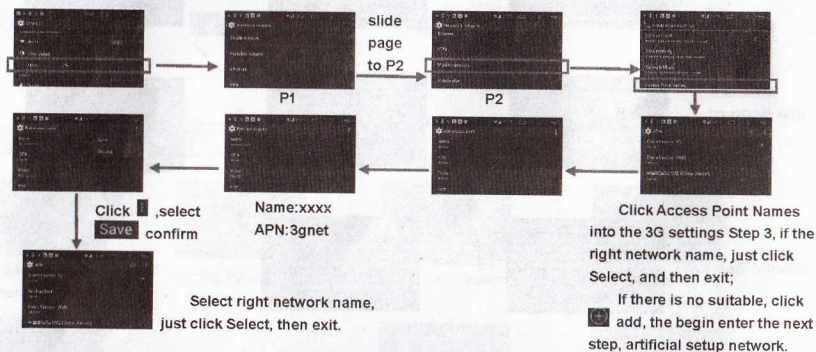


Sixteenth.Wireless & network Operation

16.1 Wireless setting

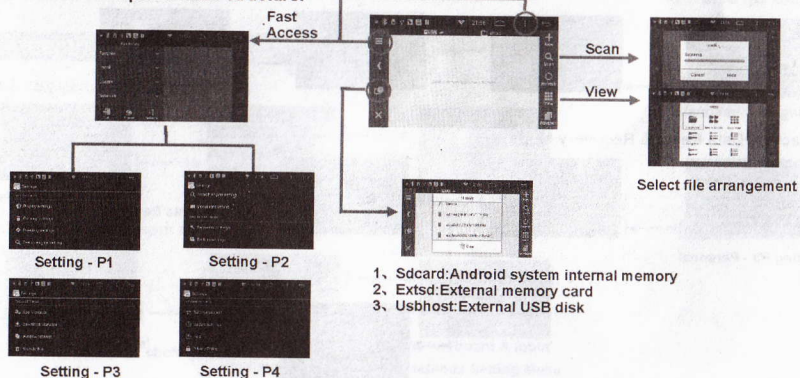


16.2 3G setting

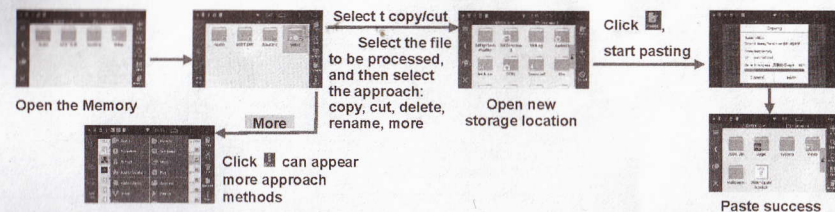


Seventeenth.ES File Explorer Operation

17.1 ES File Explorer main structure:

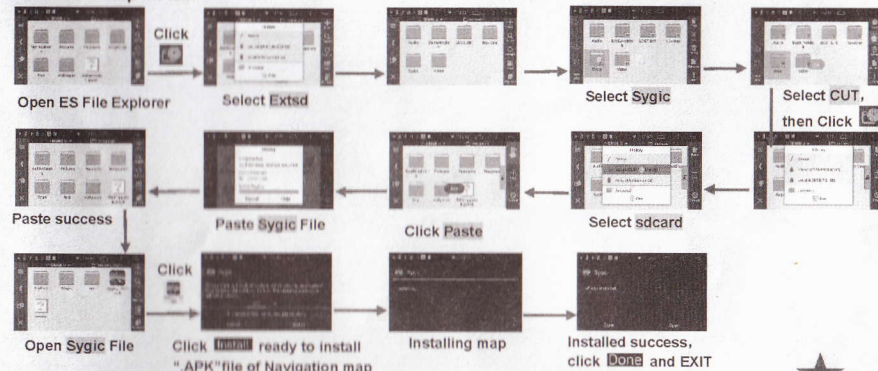


17.2 File approach methods: Copy, Cut, Delete, Rename etc



Eighteenth.APK File Install & Button Quick Launch Setting Operation

18.1 GPS Map Install:



Remark: Android 4.4 system requirements, Navigation map files must be stored in the internal memory! (Map software determines the storage location of the map file: Nand Flash or TF Card)

18.2 NAVI button Quick Launch Setting:



Nineteenth.OBD2 Operation

