

# **Tronsmart**

## Ara IZ37

### User Manual

Tronsmart Is Always Supporting You...



Questions?  
Need some help?  
[support@tronsmart.com](mailto:support@tronsmart.com)

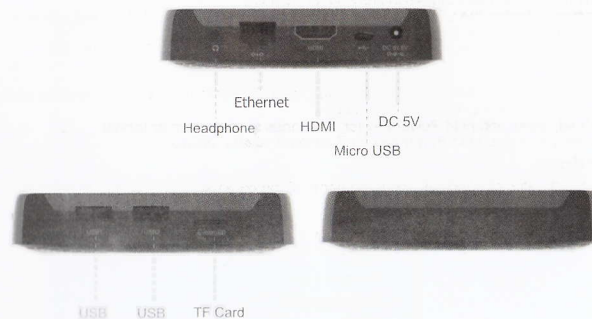


If you still have questions,  
call our help line:  
+86(755)23 60 37 40



Or visit us at:  
[www.tronsmart.com](http://www.tronsmart.com)

#### 1. Product picture



#### 2. Attentions:

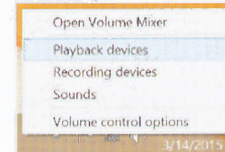
1. Please turn on/off the unit correctly, do not unplug the power adapter before power off.
2. Please do not change the BIOS settings, the unit may not work due to the change.
3. The instruction manual includes instruction for dual OS.
4. Plug power adapter, the LED light will turn to red and blue, after the light is out, press POWER button to turn on the unit.
5. Attention: Before turn on the unit, need to plug the HDMI cable and turn on the TV.

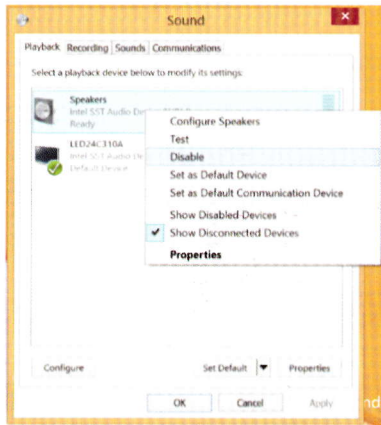
#### 3. Power on/off

1. Press and hold the POWER key for 1 second, the LED light is on. Windows boot-up takes 30 seconds, Android boot-up takes 60 seconds.
2. In Android, press and hold Power key for 3 seconds to shut down or reboot. In Windows, press and hold Power key for 7 seconds to shut down.

#### 4. Windows

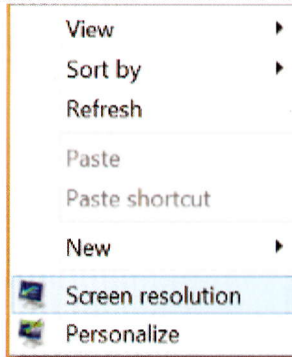
1. Following the tips of Windows, input the name of the computer and the user to enter the system.
2. Right click the Sound icon to set sound up.





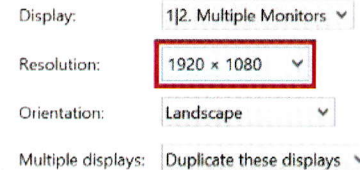
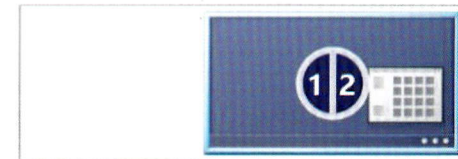
## 5.HDMI settings

On the desktop, right click and choose "Screen resolution" in the menu.

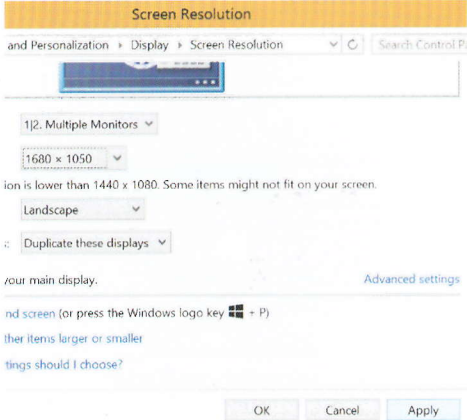


Choose a proper output definition in the red frame.

## Change the appearance of your display



Click "apply" to finish the setting.

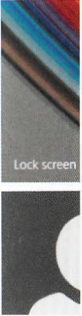
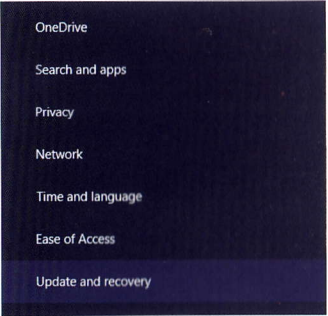


## 6.Recovery

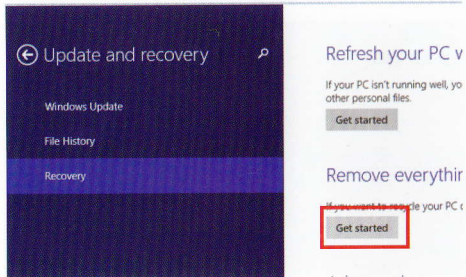
1.Click "PC settings" icon on "Start" screen.



Go to "Update and recovery".



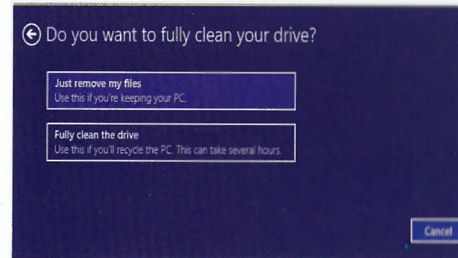
Choose "Recovery" and click "Get started", see the red frame.



u are sure that you want to reset your PC, click "Next".

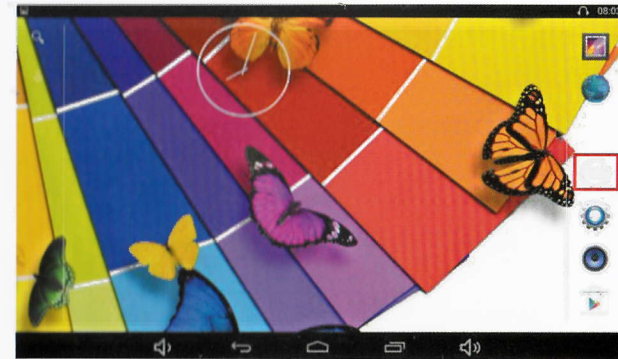


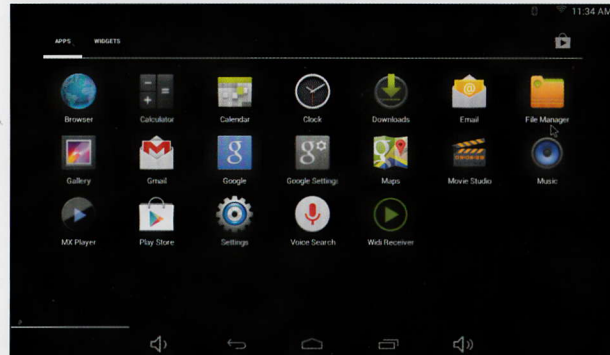
Click "Just remove my files", the computer will restart and recover the system.



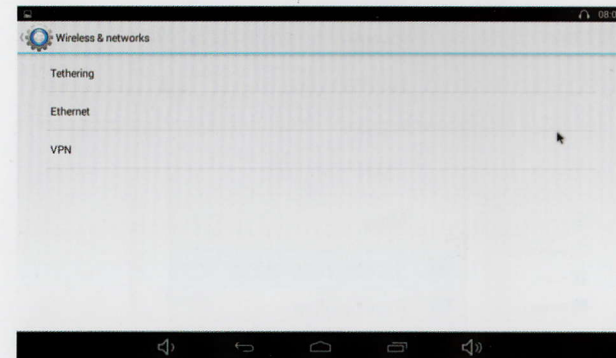
## 7.Android

1. Click the icon in the red frame to go to APP list.

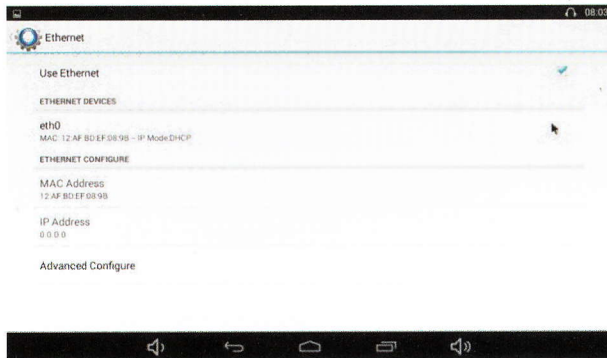




2. Set up network connection  
 Turn on "Wi-Fi" to use wireless network, and turn on "Bluetooth" to use Bluetooth. Click "More..." to use Ethernet.

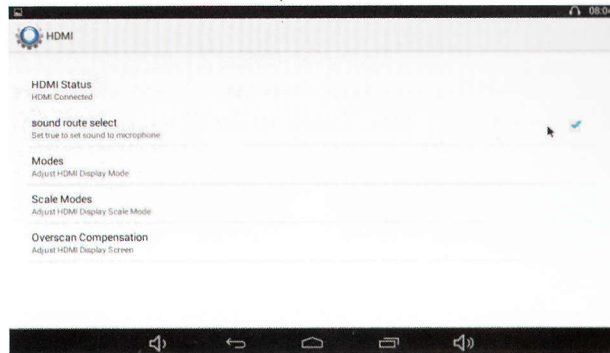


Tick "Use Ethernet" to open the wired network, go to "Advanced Configure" to set up the Network.



### 3.Settings of HDMI output and Audio output

Tick "sound route select", that is the output of headphone. If not, that is the output of HDMI. We can set HDMI display in "Modes", "Scale Modes" and "Overscan Compensation".



## 8.Switch between the dual OS

### 1. Switch from Windows to Android

Click the Android icon on the bottom left corner of the screen.



Click "OK" to go to Android.



### 1. Switch from Android to Windows

Drag out the "OS SWITCH" icon from the top right side of the screen, click it to go to Windows.

