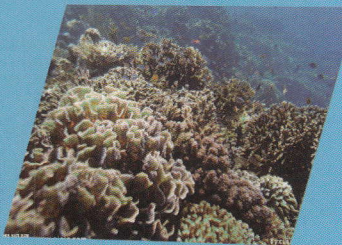


sports



XDV360 USER MANUAL

Operating Attentions

- 1.This is a high-precision product, please do not let it fall or strike.
- 2.Please do not let the camera close to the objects with strong-magnetic, such as magnet and power-driven machine.
In addition, please also avoid closing to the objects which can launch strong radio wave. Because the strong magnetic field may cause product breakdown or destroy the image and sound.
- 3.Please do not put the camera in the place with high temperature or direct sunshine.
- 4.Please choose the Micro SD card with brands, because ordinary card can not be guaranteed for using regularly.
- 5.Please do not let the Micro SD card put in or close to the places with the strong-magnetic in order to avoid losing the data of the Micro SD card.
- 6.During the process of charging up the battery, if the product gives out heat and smoke or gives off peculiar smell, please immediately unplug the power to avoid the fire.
- 7.when charging up the battery, please let the product put in the places where children can not touch, because the power cable may cause the children stifle or suffer from electric shock.
- 8.Please let the product put in the shady, dry and insulated places.

Foreword

The product is a high-end high definition and athletic camping product . And the product has many functions,such as digital video photography, slow photography, voice, video display and removable battery.
Besides, the functions of outdoor sports, home security and deep waterproof can meet any need of photographing.

Multipurpose



Product Features

- >Waterproof case is convenient for you to take a photo in water sports and can up to 30 meters deep waterproof.
- >Photography
- >Slow photography
- >The max resolution of video is 2448p 30fps 2048p 30fps 1440p 30fps
- >Wide-angle 220°HD camera lens.
- > 8-megapixel HD lens
- >Low power consumption and be used for about 90 minutes when WIFI is open.
- >Super HD 0.96 inch LCD, display.
- >Battery is removable and convenient to replace and can extend its life.
- >Charge up the battery and get a video at the same time.
- > HD OUT: high definition output.
- >Support 64G memory card.
- >Many patterns of recording video: 2448p 30fps 2048p 30fps 1440p 30fps
- >H.264 pattern record video
- >Many photography pattern: common, timing, automatically
- >Many record video pattern: common, loop, stop-motion
- >Mini appearance: many optional colors
- >Support APP upgrade for long-distance

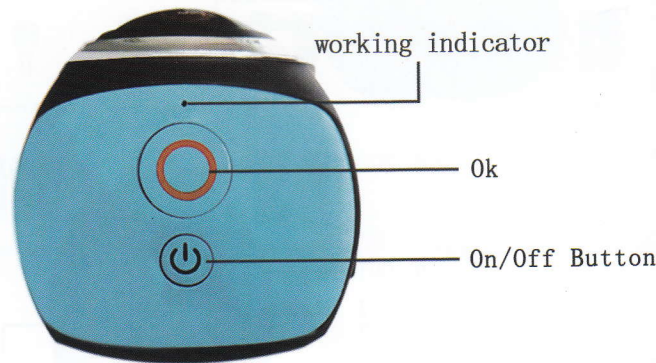
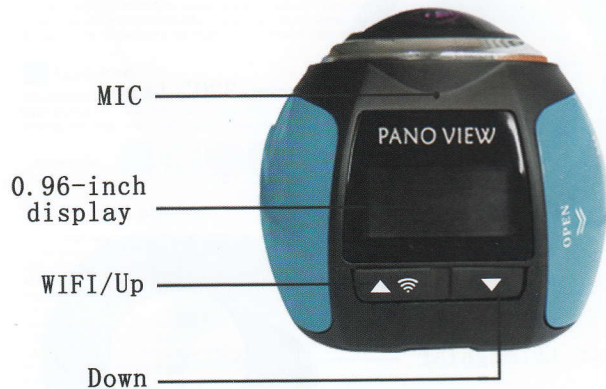
The diagram of product:



220° Lens



Gear triangular



■ The diagram of product:



Speaker



■ The diagram of accessory:



waterproof case



bicycle bracket



pedestal 1



base of the handle



data cable



commutator



switch support 1



switch support 2



switch support 3



helmet pedestal



bandage

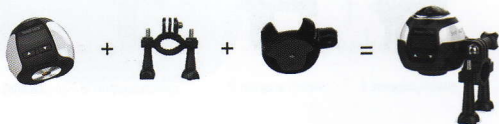


the base



user manual

Application diagram of assemble:



Guide of operating

1. plug the Micro SD card

Attentions: please choose the Micro SD card with the brands and use it after forming on the computer. Ordinary card can not be guaranteed to work regularly .

2. install and take out the battery

- stir downward the battery cover and turn on it.
- according to the plus-minus pole and the arrow on the battery, take the battery into the product and install it correctly.
- the quantity of electricity of the battery: please reference the diagram.
- stir downward the battery cover then take out the battery

3. charge up the battery

- use the USB cable to connect the computer or the adapter to charge up the battery.
- charge up the battery and record video at the same time.
- charging up the battery is available when the product is power off.

4. Power on and power off the camera

- press the power key for about 3-5 seconds then power on/off
- open the screen then power on and close the screen then power off.

5. Open/close the WIFI

- open the WIFI: shortly press the up key then open successfully, the LED light turn to flashing yellow light.
- close the WIFI: after opening the WIFI, shortly press the up key, the yellow light is black out.

6. change the mode

Power on then shortly press the key of the power on/off, you can change the modes between record video/photography/slow photography/ setting.

7. The LED light

The LED light of working: the blue light is at work.

The LED light of WIFI: the yellow light flashes when WIFI is opening; the yellow light is bright when WIFI is connected; the yellow light turns off when WIFI is closed.

The LED light of charging up the battery: the red light is bright when the product is charging up the battery; the red light turns off when the quantity of electricity is enough.

8. How to photography and photographic options set

a. Photography and video settings

The camera gets into video mode, press the Enter key to start recording. When recording , the bottom • sign is flashing then press the Enter key to stop recording while • mark disappears.

Video Mode: Normal, loop recording (2 minutes, 3 minutes, 5 minutes), time-lapse video

b. take pictures and picture-taking settings

Turn the power on, when the camera enters the mode option to select the camera mode, the upper left corner of the screen has pictures sign and then enter the camera mode. Press the Enter key to take the picture.

picture-taking Mode: Normal, the timing (3 seconds, 5 seconds, 10 seconds, 20 seconds), automatic (3 seconds, 10 seconds, 15 seconds, 20 seconds, 30 seconds), the trajectory (3P / S, 5P / S, 10P / S)

c. Slow photography and slow photographic settings

The camera enters slow photography mode option to select the shooting mode, press the Enter key to start recording. When recording , the bottom • sign is flashing then press the Enter key to stop recording while • mark disappears.

Slow Photography mode: 1440 60fps

d. Remove storage and playback

Take the recorded video to copy to the computer to play, or take out the Micro SD card then use the a card reader to read the Micro SD card in the image data.

9. Installation and use of the WIFI

Before using WIFI function, please install "XDV360" APP program on the smart phone.

NOTE: Android smart phone need to download it on Google-Play, IOS smart phone need to download in the Apple Store.

Connection procedure:

- After power on, press the up key, "WIFI message" appears on the screen, then the WIFI light will flash;
- In your smartphone or tablet's Wi-Fi settings connect to the network called "Action Cam" followed by a series of numbers. Enter the password "1234567890".
- Point and open "XDV360" APP program, you can preview the shooting screen on the APP, remote video, camera, file playback / download / delete / share.
- APP installation: the phone system requires Android 4.1 and above or IOS9.1 or more, scanning "XDV360" APP QR code, follow the indications to complete the installation



10. software Upgrade

APP update : firstly make sure the phone networking, open APP, after connecting the camera, if the new version is available, it will be automatically prompted to upgrade.

Tip: When the poor operation of the product caused by the phenomenon of death, removable battery should be re-installed. Then the machine returns to be normal.

11. Basic specification of the camera

LCD screen	0.96 inch LCD
Lens	220°FOV
Optional languages	English, Simplified Chinese, Traditional Chinese, Korean, Russian, French, German, Italian, Spanish, Portuguese
Record video	2448X2448 30fps 2048X2048 30fps 1440X1440 60fps 1440X1440 30fps 1072X1072 60fps 1072X1072 30fps
Format of record video	MP4
Format of video compression	H.264
Resolution of photos	16MP/12MP/8MP/5MP
Card	Micro SD
Take photos mode	common, timing, automatically
Record video mode	common, loop, stop-motion
Slow photography	1440p 60fps
Light frequency	automatically, 50Hz, 60Hz
USB	USB2.0
Adapter	5V/1A
Battery capacity	1200mAh
Power consumption	About 400mA@4.0V
Battery Life	2448*2448@30FPS about 1.5h
Time of charging up the battery	About 2 hours
OS	Windows XP/7/8 SP3/Vista and Mac 10.5 or above
Size	55*54*61 mm
Weight	93g
Temperature of working	-10℃~+55℃
Temperature of storing	-20℃~+70℃

Note: Specifications could be subject to modification due to upgrading or updating, Please regard the actual product as the standard form.