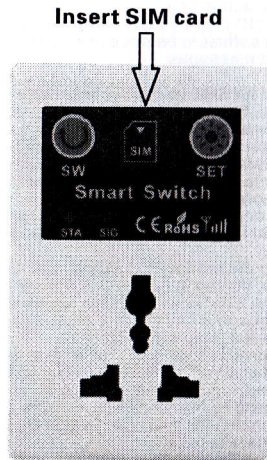


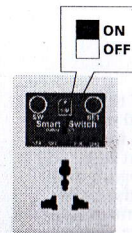
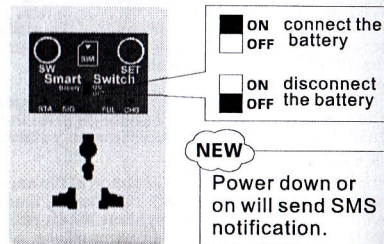
SC1-GSM SC1-GSML Instruction

I. Overview



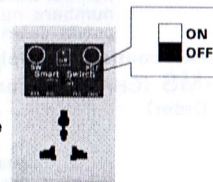
SW button	Control switch state, the state overturned after press	SC1-GSM SC1-GSML
SET button	Press the SET button, you can manually set the control numbers	SC1-GSM SC1-GSML
STA Indicator	The current status indicator, if the state is connected, lights, and if status is disconnected, the lamp	SC1-GSM SC1-GSML
SIG Indicator	GSM signal light, flash four seconds to enter the GSM network	SC1-GSM SC1-GSML
Battery key	Turn ON is connect battery; Turn to OFF is disconnected.	SC1-GSML
FUL indicator	The lithium battery charging was completed.	SC1-GSML
CHG indicator	The lithium battery is charging.	SC1-GSML

II. Differences between the SC1-GSM and SC1-GSML



When you need the SMS notification of the Power change, please turn the battery switch to ON. Then you will receive the SMS: "Equipment is powered on" if the power on, by the same way, SMS: "Equipment is powered off" will be received when the power off.

When you do not hope receive any SMS of the power notifications, please turn the battery switch to off.



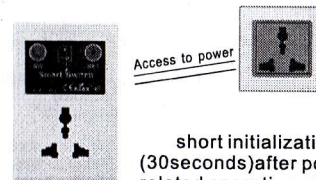
III. Options:

1. Insert SIM card



⚠ Installed your SIM card before power on, non-installed SIM card after power on.

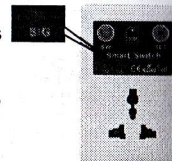
2. Turn on the juice



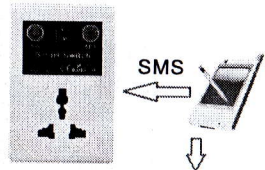
short initialization time (30 seconds) after power on, related operations after initialization. All switch is disconnected by default.

3. Entered the GSM network

Observe the SIG lights on the panel (the start is 1 second flash), when flash becomes 4 seconds, the proof has entered the GSM network. Then you can set and control the associated operation.



4. Set password



*GSM switch
initila password
is:0000

*Set password
command format:
"SN+four old
passwords+NEW
+four new
passwords"

*The password
with the power-
down memory
function.

Received the SMS of the
switch status

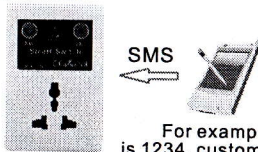
(NEW SN SETOK NEW SN IS ****)

Example : Send SN0000NEW1234

Receive SN SETOK NEW SN IS 1234

5. Set master number(can set up 5groups)

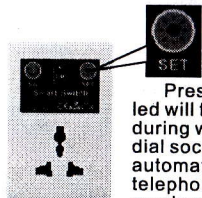
There are two ways setmaster number: one
is through SMS settings,one is through the
SET button.



Received the SMS
of set ok

For example, passwords

is 1234, customers want to
set 13788889999 to be master number, and then
edit the message content: "SN1234SET
13788889999" issued to GSM switch, if you set
successfully will receive a message:
"13788889999SETOK". Only the master number
can Dial into the socket and control GSM.Master
numbers with a power-down memory function.



Press the SET button, STA1
led will flash for 30 seconds,
during which time the number
dial socket, socket will
automatically hang up dial
telephone, when the caller
number will become master
numbers, numbers with a
power-down memory function.

6. Socket control:SMS/Dail/Button

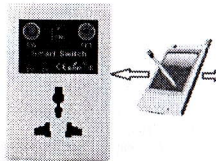
*. SMS (CHANGE Order. ON Order.
OFF Order)

Setup steps:

1、CHANGE Order
change the status of
the socket:SN+four
passwords+CHANGE
(SN****CHANGE)

2、ON Order control
the switch connected:
SN+four passwords
+ON
(SN****ON)

3、OFF Order control
the switch
disconnected : SN+
four passwords+OFF
(SN****OFF)



*Ringing to control

Users control the GSM switch by dial the
number of GSM switch, when get through the
socket state change and hang up after 1 second.
The user may hear "You can not answer the phone
call,beep . . . tone, etc". that set has been
successful. If the switch I connected, it will change
to disconnected state after a call.If the original
state is off, call and changed to the connected.

*Button control:

When you press the SW button, switch state
will be overturned.If the original state is connected,
then turned off .If the original into Shutdown mode,
GSM plug into connected.

7.CHECK Order SMS check the swith status:
SN+ passwords +CHECK"
(SN****CHECK)

8、Memory function of socket power down

The default function of socket is power down
save.Status can be determined by observing the
STA lights flashing after power on:After power
STA flash two times, which means that the status
is power down save; STA after powerflash four
times,which means that the status is without
power down save.

For example: power down status can be changed
by the customer,press SW 12 seconds after the
release, you can change the current memory status.

9、Reset the system

Press the SET button and SW button at the same
time for 1 second, STA LED will slow flash 2 times,
proved successful reset the system.When you
reset the system, the master number will be
emptied, password becomes four zeros: 0000.

Notes

- 1、SIM card requirements: global GSM standard
SIM card can be used, currently does not support
3G or CDMA card, please activate the new SIM
before insert the device.
- 2、Do not placed the GSM swithc in the tin trunk
or metal enclosed environment, this will cause the
signal can not access GSM network or worse,
affect the actual use.
- 3、Caller ID display must be turned on,ensure SIM
card has sufficient balance in order to call and
send text messages.
- 4、When the the signal is weak in some environment,
there will let SMS controlled insensitive, and this
is normal. Because the message communication
needs transit point forward, it will send to the other
number on time when in a good signal. In such
circumstances,if you want set the master number,
consider to use SET button to set master number
will be more efficient.
- 5、SMS or phone in the control, not to operate the
buttons at the same time, this will cause system
instability.
- 6、Using the product should pay attention to
moisture, limited to indoor use. Power do not work
more than 2200W, inductive load power by half.
Rated voltage is 110V-220V, please use in a safe
environment, to ensure safety.
- 7、This product can only control the power supply
switched on or off, do not have other functions. For
some electrical appliances, such as some air-
conditioning to maintain the function is not powered
off, re-connect the power, will not immediately work.
For the state to maintain electrical power, such as
most of the TV, stereo can immediately work.
- 8、This product only works with 110V ~ 220V AC
voltage range, can not be used in cars, or other
voltage environment.