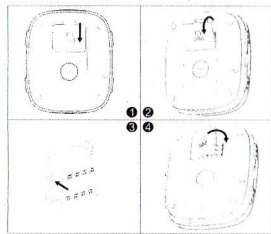
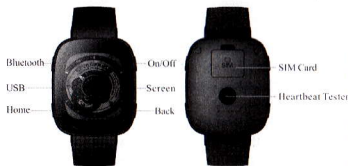




WATCH S7



User Manual



When you subscribe to a cellular network, you will receive a plug-in SIM card complete with

CONTENT

1. WARNINGS	2
2. GETTING STARTED	2
3. YOUR PHONE	6
4. FUNCTION MENU	7
4.1. DIAL PAD	7
4.2. CONTACTS	7
4.3. MESSAGE	8
4.4. CALL LOGS	9
4.5. MULTIMEDIA	9
4.6. AUDIO	9
4.7. BT PHONE	10
4.8. CAMERA	10
4.9. TOOLS	11
4.10. SETTINGS	11
4.11. PROFILES	12
4.12. MY FILES	12
5. ENTRY MODE	12
6. CARE AND MAINTENANCE	13
7. TECHNICAL INFORMATION	14
8. WARNINGS	15

your subscription details, such as your PIN, and available optional services.

Caution: Do not bend or scratch your SIM card. Avoid exposing your SIM card to static electricity, water, or dirt.

Tips: Face the gold color contact point of SIM card towards the cell phone and push the SIM card into the slot.

2.2 Battery Installation

Caution: Install according to the illustration above to avoid breaking the battery connectors.

2.3 Charging the Battery

Insert the charger; the flash symbol on the charger plug must face upwards.

2.4 T-flash Card

Insert the T-Flash card into phone. This will expand the Flash memory of the phone. Tap Multimedia menu, you can browse MP3, MP4, picture, etc.

2.5 USB Cable

You can transfer and store files, such as MP3,

1. Warnings

Not following these simple guidelines may be dangerous or illegal. Read the complete user guide for further information.

TURN ON SAFELY

Do not turn on the phone when wireless phone is prohibited or when it may cause interference or danger.

ROAD SAFETY

Obey all road safety laws. Always use both of your hands to operate the vehicle while driving.

INTERFERENCE

All wireless phones may be sensitive to interference, which may affect performance.

TURN OFF IN HOSPITALS

Follow all restrictions. Turn off the phone near medical equipment.

TURN OFF ON AIRCRAFTS

Follow all restrictions. Wireless devices can cause interference on aircrafts.

TURN OFF WHEN REFUELING

MP4 and pictures from PC, through USB cable, to the U-disk in phone or identified SD card that is inserted.

3. Your Phone

3.1 Making a Call

In standby mode, press numerical keys to input phone number to dial phone number. When you finish inputting phone number, press the dial key, SIM2 key to make a call. If you're making a long distance call, add the area code preceding the telephone number. During a call, you can press up/down keys to adjust volume. Press left soft key to access Options.

3.2 Emergency Service

You can dial an emergency call without the SIM card. Contact your service provider to get the emergency call number.

3.3 Answering a Call

When you receive a call, the phone will ring or vibrate and will display an incoming call indicator. Press the dial key, SIM2 key or left soft key to answer. Press left soft key to access

Do not use the phone at/near refueling stations. Do not use near fuel or chemicals.

USE SENSIBLY

Only qualified personnel may install or repair this product.

ENHANCEMENTS AND BATTERIES

Use only appropriate enhancements and batteries. Do not connect incompatible products.

WATER-RESISTANCE

Your phone is not water-resistant. Keep it dry.

BACKUP COPIES

Remember to make back-up copies or keep a written record of all important information stored in your phone.

2. Getting Started

2.1 SIM Card Installation

options.

3.4 Rejecting/Ending a Call

Press end key to reject an incoming call or end current call.

3.5 Keypad Definition

1. End key: Hold down this key to power On/Off.

2. Reset key: Restart the mobile phone with a sharp object to press this button

4. Function menu

4.1. Dial pad

In the input mode, enter the phone number, enter the numbers. In number input interface, press the * key twice, there will be a "+", after the number of continuous press the * key is "+", "p", "w".

Standby mode fast long press "#" in standard mode, silent mode and switch between Power saving mode.

4.2. Contacts

You can store contacts' personal information and numbers while also search for previously

stored contacts. Press left soft key to access Options.

4.3. Message

After entering Messages, in: Templates, Voice Mail Server, Broadcast Message, SMS/MMS Settings and Message capacity.

4.3.1 Write Message

This function can begin a new SMS/MMS. After completing the SMS/MMS, press left soft key to access to options.

4.3.2 Inbox

To check received messages in inbox.

4.3.3 Outbox

Checks the information of unsuccessfully sent message in outbox.

4.3.4 Drafts

Checks the information of unsuccessfully sent message in drafts.

4.3.5 Sent box

Checks the information of unsuccessfully sent message in sent box.

4.3.6 Security inbox

- 8 -

4.10.4 Call settings

Call divert, Call waiting, Call barring, Hide ID, Others.

4.10.5 Connections

Network account, GPRS service, Data connection setting, Network selection.

4.11. Profiles

This phone provides several profiles, by pressing left soft key, you can enter to set: Active, Customize, Rename, and Enhance Sound.

4.12. My files

Enter this menu; you can check the files store on T-flash card. Press left soft key, you can do options.

5. Entry mode

You can use several methods for entering text and numbers. By selecting a Text Entry Mode, the phone provides a few Text Entry Mode for new adding, editing contact records, finding contacts, editing SMS and writing memos.

- 12 -

You will like information collection in the security in the box

4.3.7 Templates

10 a template for choice

4.3.8 Broadcast message

Edit broadcast message list

4.3.9 Voice mail server

Edit speech number

4.3.10 Settings

SMS Broadcast message

4.3.11 Message capacity

SIM1, SIM2, Phone

4.4. Call logs

In the call history menu, you can check dialed calls, received calls, missed calls, rejected calls, delete all, call timers, call cost, and GPRS counter.

4.5. Multimedia

DV, FM radio, Image, Video, Recorder

4.6. Audio

The music player is used to play music files in

- 9 -

Select Text Entry Mode:

5.1 Letter entry mode

Editing interface, click on the appropriate soft keyboard subtitles.

5.2 Number entry mode

Click the top left corner of the input image to switch to digital input, through the point of the soft keyboard to enter the corresponding number.

6. Care and maintenance

Battery care

Your device is powered by a rechargeable battery. When the power is weak, please charge the battery.

- Leaving the battery in hot or cold places, such as in a closed car in summer or a freezer in winter conditions, will reduce the capacity and lifetime of the battery. Always try to keep the battery between 59°F and 77°F (15°C and 25°C).

- Battery performance is particularly limited in temperatures below freezing. Cellphones are

- 13 -

supported formats in the current player's list. You may view details of the music files and set the current music file as the ring signal for incoming call. You may connect the Bluetooth earphone to enjoy the music. Meanwhile, it supports gravity acceleration sensor, which means the phone will automatic switch to the next song once slightly shaken in the playing interface.

4.7. Bt Phone

This mobile phone support Bluetooth wireless connection. You can establish wireless connection between mobile phone and device to realize voice communication, data exchange and synchronization.

After the success of the connected bluetooth, bluetooth dialer can be used instead of the bluetooth headset, calls, synchronous contacts, and so on

4.8. Camera

Press left soft key or OK key to select the

- 10 -

not considered household waste.

Mobile phone maintenance

- Keep the device dry. Precipitation, humidity, and all types of liquids or moisture can contain minerals that will corrode electronic circuits. If your device does get wet, remove the battery and allow the device to dry completely before replacing it.

- Use only the supplied or an approved replacement antenna. Unauthorized antennas, modifications, or attachments could damage the device and may violate regulations governing radio devices.

All of the above suggestions apply to your device, battery, charger.

7. Technical Information

Weight Size Length ×Width ×Depth

The operation time of the battery depends on conditions such as:

- Transmitting power level
- Signal (distance between the phone and the base station)

- 14 -

function. The photo can be previewed in the screen; press OK key to shoot and right soft key to back, left soft key to access Options. Use navigation keys, you can choose and enter the functions list on screen.

4.9. Tools

Internet, Alarm, Sokoban, Calendar, Calculator, STK

4.10. Settings

4.10.1 Phone settings

Date &time, Language settings, Input method settings, Auto power on/off, Power management, Restore factory settings.

4.10.2 Display

Animation effect, Wallpaper settings, Idle display settings, Contrast, Backlight.

4.10.3 Security

PIN, Modify PIN2, Phone locked, Modify the cell phone password, Privacy, Auto lock screen, Lock screen by end-key, Guard lock, Fixed dialing, Blacklist.

- 11 -

- Network parameters defined by the operator
- Phone use (WAP, games, SMS)
- Charging procedure used
- Reset map:

Exclusions:

Subject to the exclusions contained below:

- Damage due to the improper use.
- User does not follow the manual.

Explanation:

The company has the final right of the explanation for this document.

Software upgrades will not be announced.

8. warnings:

- please use original matched battery. If wrong battery is used, there will be danger of explosion.
- Disused old battery, please handle it according to local environmental protection law and don't throw it at random.

All pictures are for reference only in the instruction book; please refer to the actual phone.

- 15 -