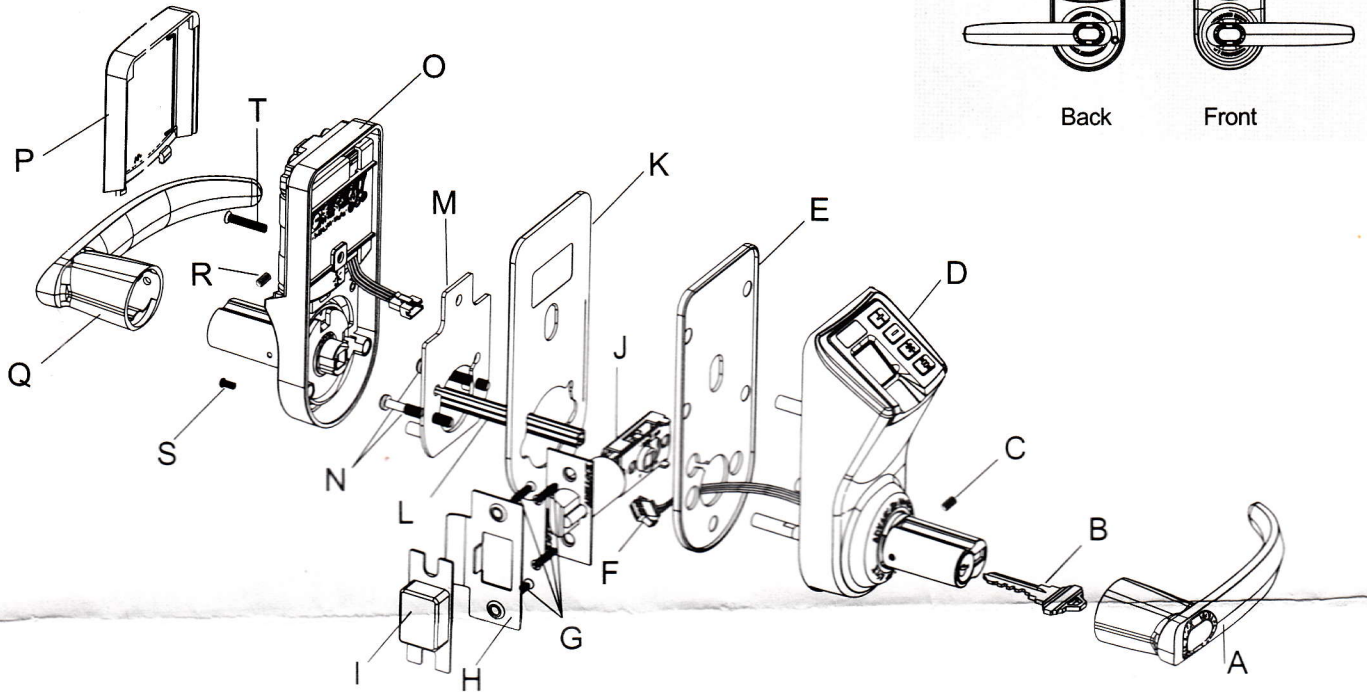


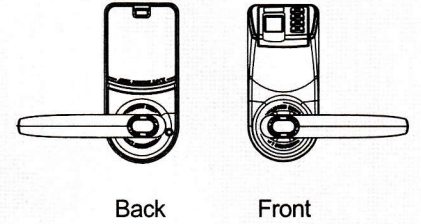
Trinity 788 installation instruction

Trinity788安裝說明圖示

Diagram of lock 門鎖結構圖



Lock body



- A、前把手 B、鑰匙 C、固定前把手的內六角螺絲 (M4*7) D、前鎖面 E、前鎖面膠墊 F、數據線
G、固定鎖芯用尖頭螺絲 H、門扣板 I、門扣盒 J、鎖芯 K、後鎖面膠墊 L、方軸
M、安裝蓋板 N、固定安裝蓋板用平底螺絲 (根據門厚有3種尺寸可選: M5*20 M5*30 M5*30) O、後鎖面
P、電池盒蓋 Q、後把手 R、固定後把手的內六角螺絲 (M4*7) S、固定後把手的內六角螺絲 (M4*7)
T、固定後鎖面用平底螺絲 (根據門厚有3種尺寸可選: M5*20 M5*30 M5*30)

- A. Front lever handle B. Mechanical key C. Hexagonal screws for fixing the front handle (M4*7) D. Front lock body
E. Front lock body gasket F. Wire connector G. Screw H. Strike plate I. Strike box J. Latch
K. Back lock body gasket L. Spindle M. Back plate
N. 3 different set of screws are provided as M5*20, M5*30 and M5*30, in which the screws are used to fix the position of inner metal plate.
O. Back lock body P. Battery cover Q. Back lever handle R. Hexagonal screws for fixing the back handle s. M4*10 screw
T. 3 different set of screws are provided as M5*20, M5*30 and M5*30, in which the screws are used to fix the position of back lock body.

表: 螺絲配置表 The table of screws and door thickness

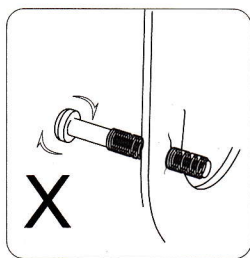
圖示序號 Diagram code	數量 Quantity	尺寸 (mm) Size	適合門厚 (inch/mm) Appropriate for door thickness
C	1	(M4*7)	
R	1	(M4*7)	
S	2	(M4*10)	1-3/16" - 2-3/8" (30mm - 60mm)
N	2	(M5*20)	1-3/16" - 1-9/16" (30mm - 40mm)
		(M5*30)	1-9/16" - 1-31/32" (40mm - 50mm)
T	1	(M5*40)	1-31/32" - 2-3/8" (50mm - 60mm)

注: N/T螺絲根據門厚的不同來選擇不同尺寸的螺絲配置;

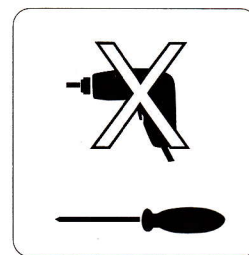
Note: N/T please use the appropriate screw set based on your own door thickness.

Notices of the installation 安裝注意事項:

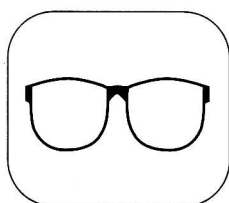
- 1、為保證安裝成功，在扭緊螺絲時不要過度用力，以免對鎖具造成損傷。
To ensure a successful installation, please do not use power tool to tighten the screws to avoid damage on the screw.



- 2、要注意選擇正確的固定螺絲工具
Please use the correct fixed-screw tools

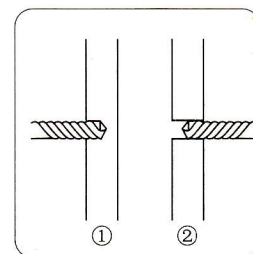
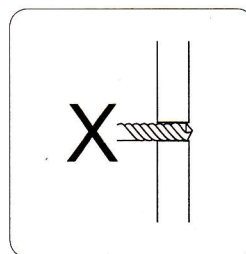


- 3、在進行門洞開孔時請注意佩戴護眼器具，以免對眼睛造成傷害
In order to avoid eye-damage, suggest wearing eye-protection during door-hole drilling.



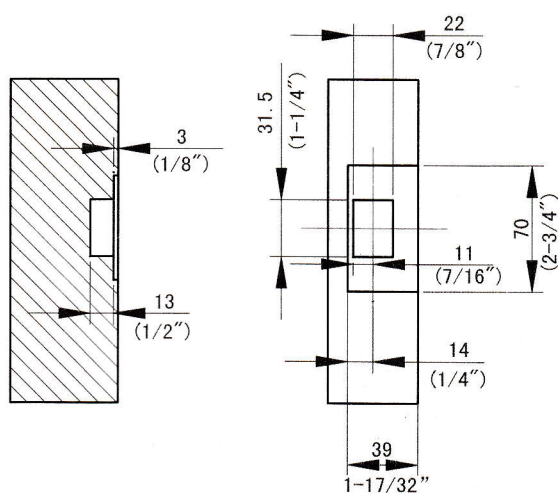
- 4、為防止對門造成不必要的損傷，在進行門洞開孔時請分別從兩邊進行對開孔，切忌單從一邊穿透開孔

In order to prevent any unnecessary damage for the door, please drill the holes from both sides of the door separately.

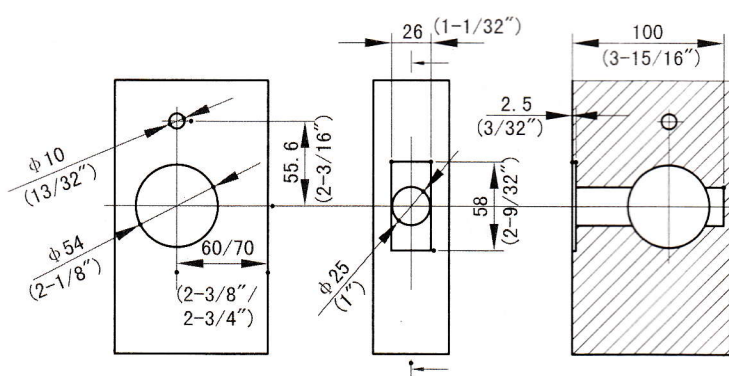


1 Door-drilling 開孔

mm/inch



Door frame preparation
門扣板開孔圖

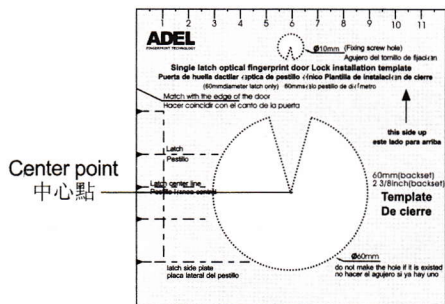


Door preparation
門體開孔圖

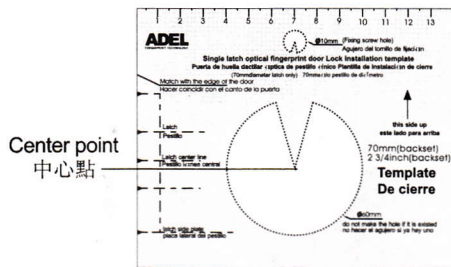
Door and Door frame drilling Diagram
開孔尺寸圖

Template for new door 開孔模板

Paper template: the 2 3/8" [60mm] backset or 2 3/4" [70 mm] backset
有60mm及70mm兩種規格



2 3/8" [60mm] backset 2 3/8" [60mm] 模板

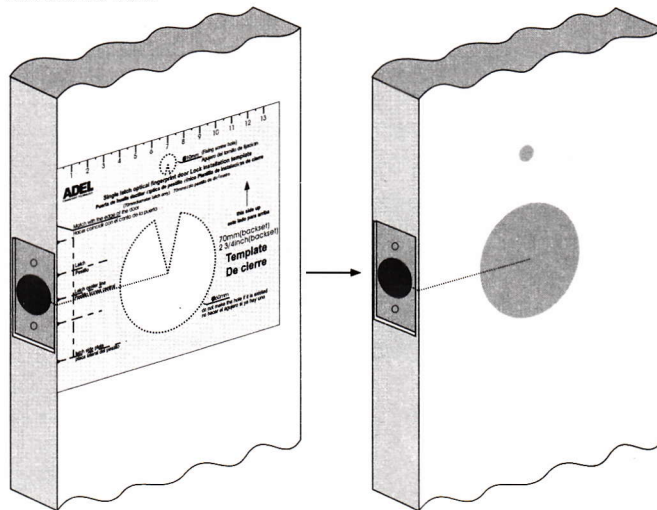


2 3/4" [70 mm] backset 2 3/4" [70 mm] 模板

Door Preparation

Note: Drill from both side of the door to prevent unsightly damage.

1. Determine which template fit your Trinity 788 installation (either the 2 3/8" [60mm] backset or 2 3/4" [70 mm] backset)
2. Place appropriate paper template (supplied) onto door and mark for holes. Next drill the hole.



開孔方法

注：從門的兩側鑽入以免損壞門身。

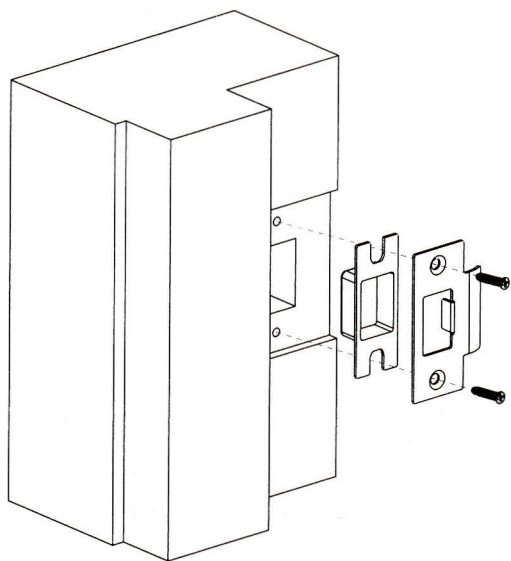
1. 先確定60mm或是70mm的模板適合自己的門
2. 將選好的開孔模板放於門的適當位置上，對準位置，劃下位置記號。
3. 按劃下的位置記號鑽孔。

2

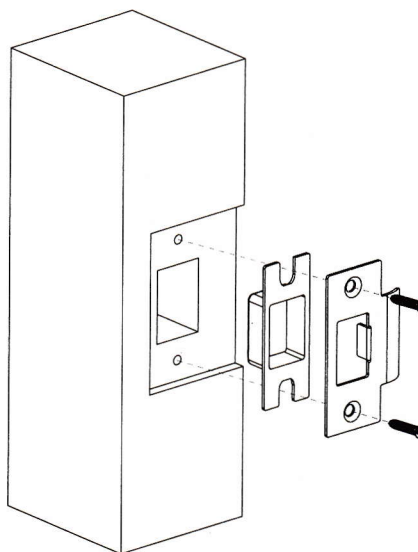
Installing the strike plate 安裝門扣板

1. Mark location of strike on the door frame, making certain that the strike opening is aligned with latch bolt.

1. 根據鎖芯的高度記下門扣板的適當位置
2. 按記下的門扣板位置鑽孔
3. 將門扣板及門扣盒一併裝上



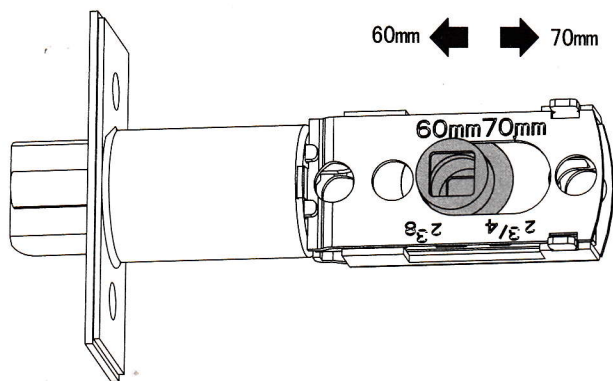
T型門安裝圖
Type T-door's installation diagram.



普通門安裝圖
General door's installation diagram

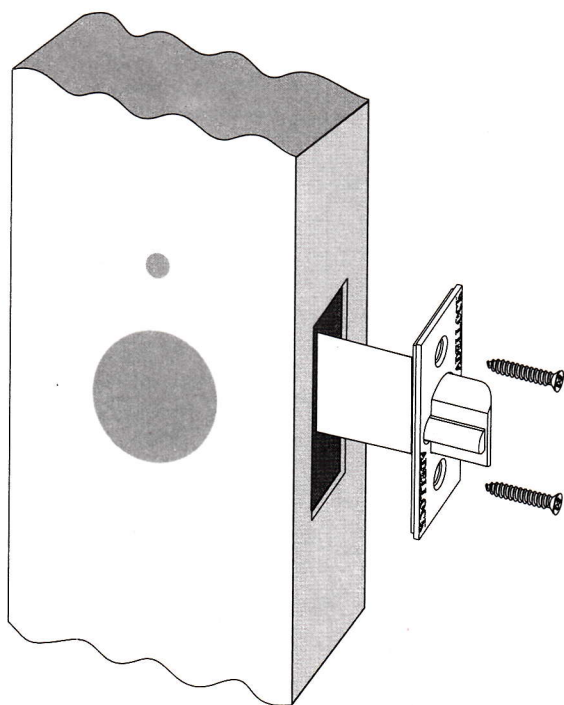
3 Installing Latch 安裝鎖芯

- ① 2 3/8" [60mm] backset or 2 3/4" [70 mm] backset
60mm或70mm模板



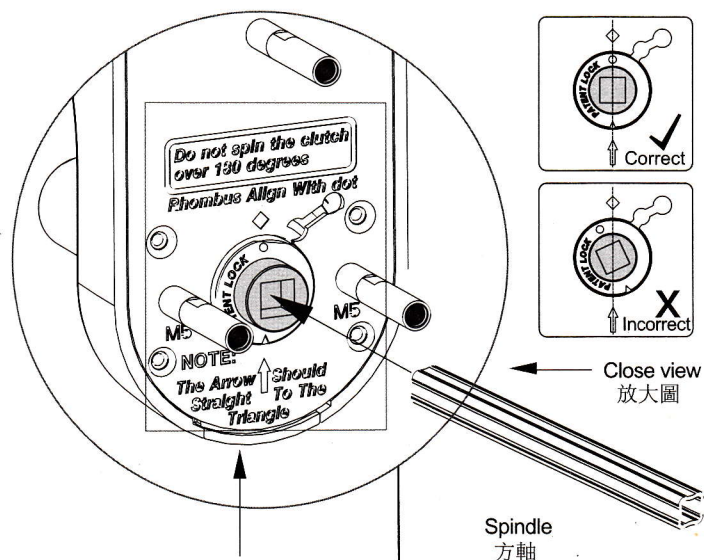
The latch has two backsets available: 2 3/8" [60mm] backset or 2 3/4" [70 mm] backset
根據已選的開孔模板調節鎖芯的設定 (60mm或70mm)

- ② Secure the latch to the door using two wood screws supplied.
Latch unit face plate must be flush with door.
用固定鎖芯用尖頭螺絲把鎖芯固定在先前鑽好的孔。



4 Installing spindle, and front lock body

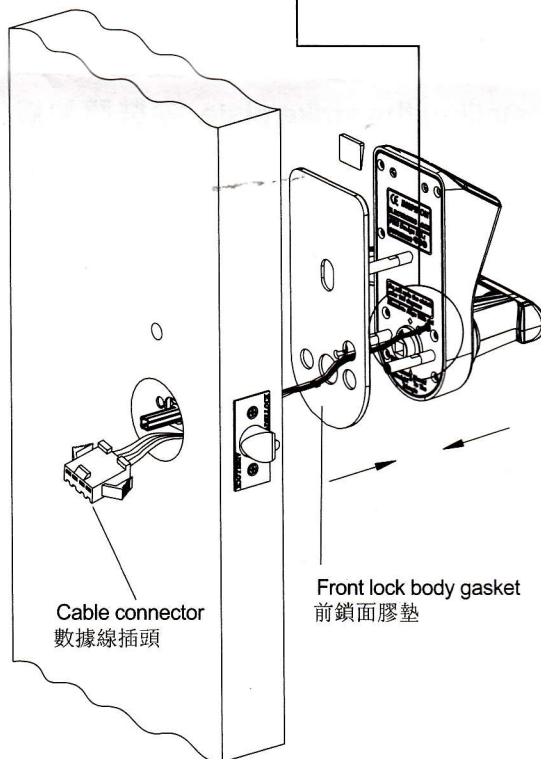
安裝方軸及前鎖面



Very important note:
As the photo shows there is an arrow pointing up to the small triangle. This is the only position where the clutch can be activated during normal operation.

安裝注意事項:

1. 將離合器上的箭咀對準鎖體上的小三角標誌。
2. 方軸插入離合器後不能轉動。



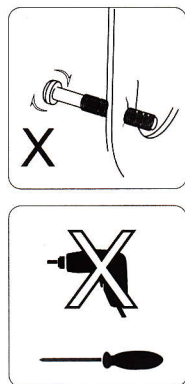
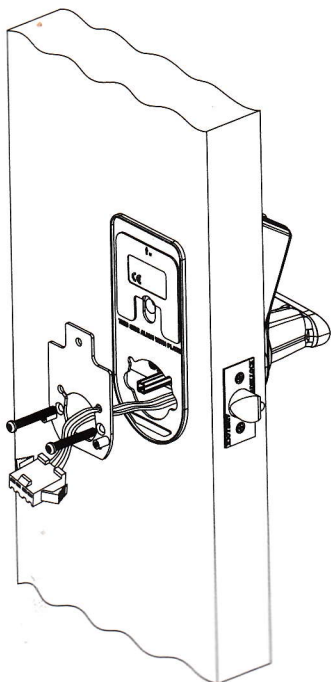
Note:

The wire goes under the latch

注:

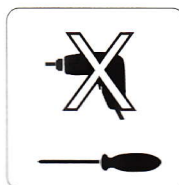
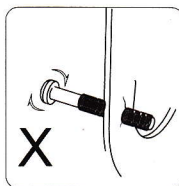
1. 數據線必須在鎖芯下方穿過。
2. 前鎖面必須與前鎖面膠墊一併安裝。

5 Installing the back plate and back lock body gasket 安裝蓋板及後鎖面膠墊的安裝



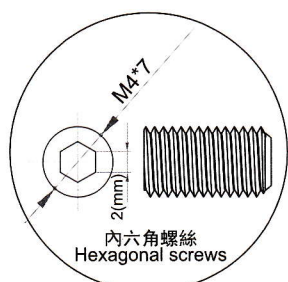
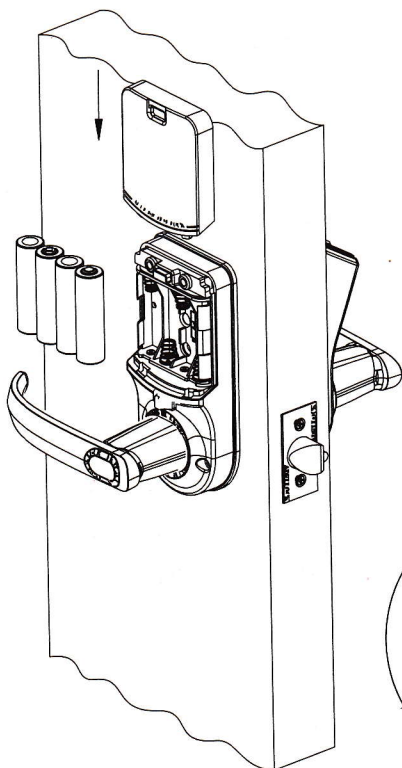
1. The back plate fits into the back lock body gasket,
2. Secure the back plate and back lock body gasket with two M5*L screws
(According to the door thickness to choose screws, please refer to the table of screws and door thickness)
1. 將安裝蓋板放準在鎖面膠墊的特定位置上
2. 用提供的兩口安裝蓋板用平底螺絲將安裝蓋板及後鎖面膠墊固定在門上。

6 Installing the back lock body 安裝後鎖面



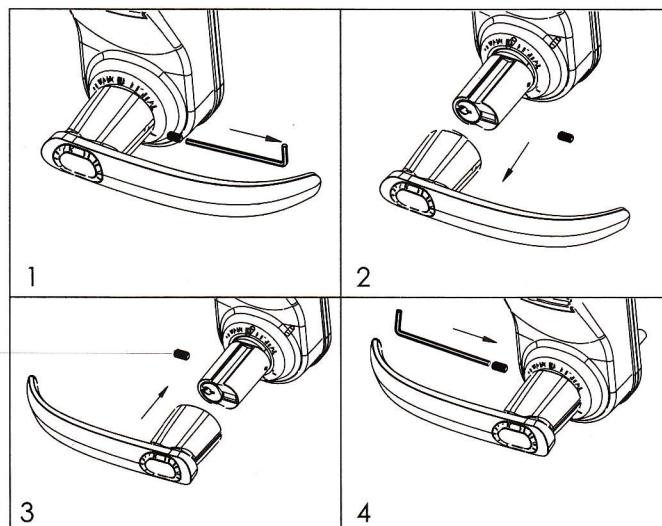
1. Connect the cable as shown
2. Push the wire connector into the hole under the latch
3. Secure the back lock body with two M4*8 screws and one M4*L
(According to the door thickness to choose screws, please refer to the table of screws and door thickness)
1. 先把前後鎖面的數據線按圖示接上
2. 將接好的數據線藏於鎖芯下方的空位
3. 用提供的三口螺絲將後鎖面固定(其中一口位於電池盒內)

7 Battery 電池的安裝

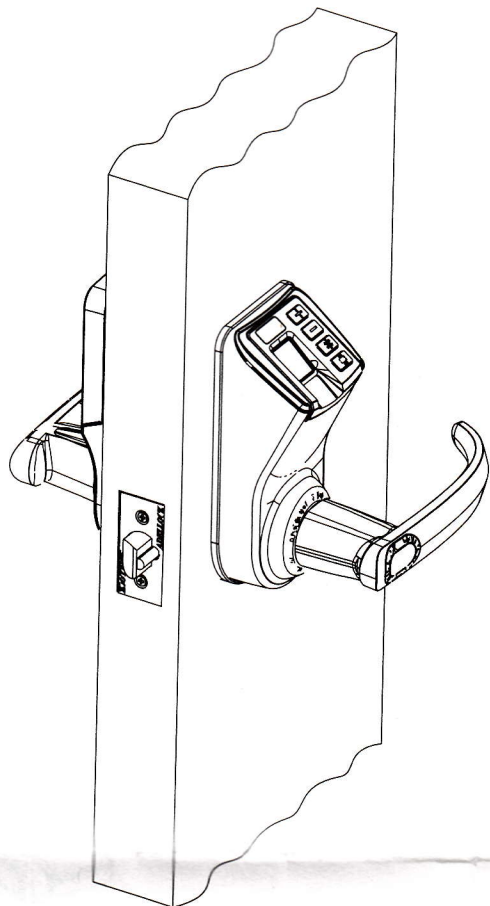


1. Put the batteries in and install the battery cover
2. Handle lever is field changeable, assemble or disassemble the handle lever with the tool supplied.
1. 裝上4顆 AA電池(留意正負極)
2. 關上電池蓋

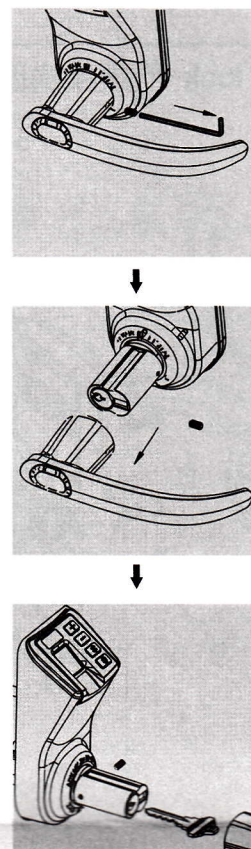
Note: field changeable handle lever
注: 可按實際需要更換把手方向



Testing the operation of the lock 安裝後測試



How to use mechanical key
應急鑰匙的使用



1. Rotate the inside handle lever and hold. Ensure that the latch is fully retracted and flush with the latch face plate. Release the inside handle lever, the latch should be fully extended.
2. After batteries putting in the lock, it is going in a normal situation if the latch is retracted inside once rotating the indoor handle and holds it, and also the latch is fully extended once releasing the indoor handle. Please see the following diagrams in Figure 1.
3. Place your finger on the fingerprint sensor, you should see the sensor is flashing with red LED, the number display shows "--", a long beep, a green light and a motor clutch sound. Rotate the front handle lever and hold. Ensure that the latch is fully retracted.
4. With the door open, verify functionality of the mechanical key override as shown. Take off the front handle lever, insert the mechanical key, turn the key to vertical position then rotate the handle bar. Ensure the latch is fully retracted.
5. Figure 1 shows, the latch pin must not slip inside the strike box when the door is closed.

1. 檢查門鎖是否穩固地裝在門上。
2. 接上電源後空轉把手，即於後鎖面按下把手不放，鎖舌完全退入門中，放開門把手，鎖舌自動彈出，此為正常。此時鎖舌狀態如下（圖1）。
3. 將任一手指放於指紋窗上，指紋窗閃紅燈，識別指紋後數碼管顯示窗顯示 "--"，綠色信號燈亮，聽到機器運作聲後按下前把手，鎖舌完全退入門中；放開把手，鎖舌自動彈出，此為正常。門鎖會在5秒後自動鎖上。
4. 按圖示用工具取下把手，插入鑰匙，將鑰匙轉動180度，再轉動把手開門。
5. 站在門外，關上門，測試門是否自動上鎖。在正常狀況下，沒有正確指紋，密碼或鑰匙是不能開門。

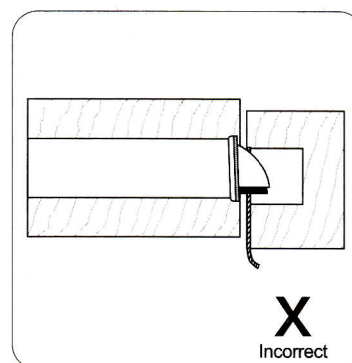
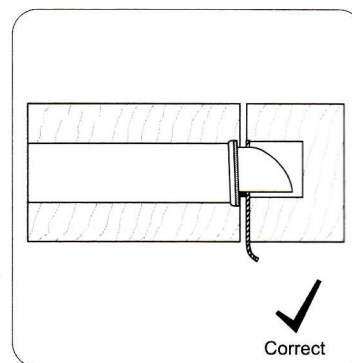
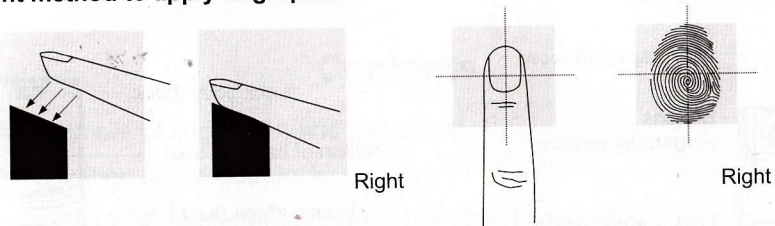


圖1 (Figure 1)

Notice

1. Keep your fingers clean when using this product.
2. In the state of new lock (factory setting), the lock can be unlocked with any fingerprint.
3. When opening the door, if the lock beeps an alarm and the indicator light flashes red, it's indicating the lock is in insufficient voltage level. Please change the batteries.
4. This product can save 99 fingerprints, among which 3 are master fingerprints (Code: 00-02), and other 96 are member fingerprints (Code: 03-98). Additionally there is also a set of spare password for unlocking (Code: 99).
5. Deletion of fingerprint is to delete each fingerprint separately according to its code; the fingerprint cannot be deleted unless you know the code.
6. The dirt on the surface of fingerprint collection window may affect the normal use. Therefore please keep it clean.
7. Do not clean the lock surface with corrosive substance, or else the protection layer may be damaged and thus influence the gloss of the lock surface. Therefore please clean the lock surface periodically with "furniture polish wax" (e.g. Pledge).
8. If the latch bolt fails to draw back and forth freely, or the door cannot be closed normally due to the distortion of the door, please adjust the strike plate's position.
9. When the fingerprint and password fails to work, use the mechanical key to open the door; please keep the mechanical key in a proper place.

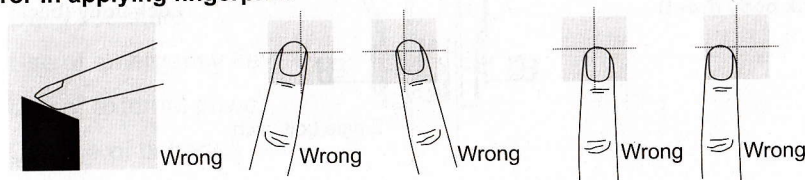
• Right method to apply fingerprint



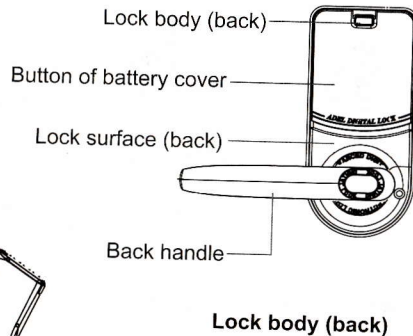
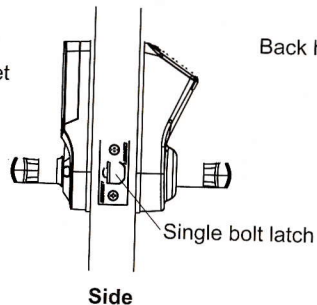
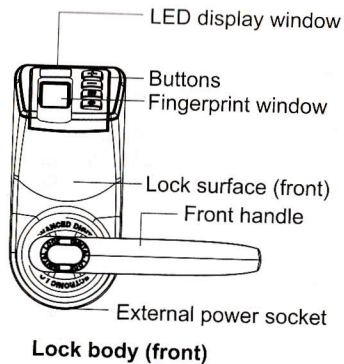
Notes:

When the red light on fingerprint collection window flashes, press your finger onto the window, and then remove your finger after a beep; press your finger again after 2 seconds, if you hear two long beeps, the collection is successfully completed.

• Error in applying fingerprint



• Name of the parts



Contents

I.	Assignment of fingerprint and password	06
II.	Initialization of the door lock	06
III.	Enrollment of master fingerprints / member fingerprints	08
IV.	Setup of spare password	12
V.	Deletion of fingerprints	14
VI.	Deletion of password	15
VII.	Daily use state	16
VIII.	Use of emergency key	18
IX.	Use of external power	19
X.	Change of batteries	19

Trinity 788 Door Lock Operation Instructions

• Instructions of the lock buttons

Buttons	Function in setup state	Other functions
Button " + "	Enter the enrollment mode	Figures 0-9 up
Button " - "	Enter the deletion mode	Figures 0-9 down
Button " * "	Cancel current operation	Setup passage mode
Button " # "	Confirm current operation	Activation (Activate the lock to work state)

• Indication of the lock state

1. Operation succeeded: green light on, with two long beeps.
2. Operation failed: red light on, with two short beeps.
3. Door open: electric engine makes a rolling sound for the first time, which indicates the lock is in door open state.
Door closed: electric engine makes a rolling sound for the second time, which indicates the lock is in door closed state.
4. Enter passage mode: the lock makes a beep, and after the successful setup, the green indicator light flashes every 5 seconds. Refer to P.18 for passage mode setup.

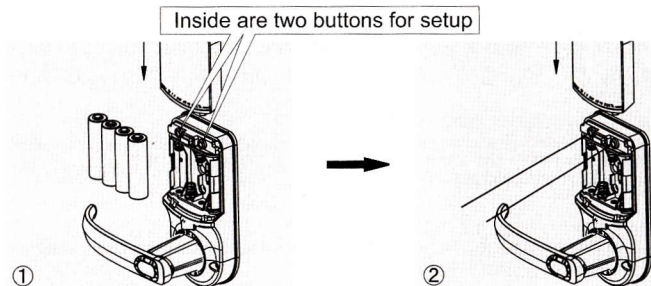
I. Assignment of fingerprint and password

Types	Number	Code	Privilege	
Master fingerprint	3	00-02	Add/delete fingerprint	Passage mode
Member fingerprint	96	03-98	Open the door	
Password	1 set	99	Open the door	

Note:

The three master fingerprints can delete each other. At the deletion of the last master fingerprint, the lock resumes to the factory setting.

II. Initialization of the door lock



Specific operations:

- a) Press the on battery cover button, slide the battery cover upward and remove it, you can see one hole at each side, and inside each hole there is a button for setup;
- b) Remove either of the four batteries, pressing the buttons on the front side to confirm the power is successfully cut off, then insert into the two holes to press the buttons inside with two slim objects (e.g. iron wire) at the same time, hold it tight (not to release), and reload the battery. The lock is then re-powered, if you hear a toot sound after 5 seconds, the initialization of the lock is successfully completed, and you may lose the slim objects.

Note:

After initialization of the lock, all the enrolled fingerprints and password in the lock are cleared, and the lock resumes to the new lock state (factory setting). Any finger can open the door, and master fingerprints, member fingerprints, as well as spare passwords need to be set again.

III. Enrollment of master fingerprints / member fingerprints
• Enrollment of master fingerprints (take user "01" as an example)

Operational procedure	Indication of the lock
In the state of new lock, put any finger on the fingerprint collection window to enter the door open state	Green light is on, and the LED displays "--"
↓	
Press Button "+" to enter the enrollment mode	A beep sound heard, and the LED displays "0-"
↓	
Press Button "+" or "-" to adjust the first digit "0" of the fingerprint code, and press Button "#" to confirm the choice	The tens place displays the figure that has just been set, while the ones place displays "0"
↓	
Continue to press Button "+" or "-" to adjust the second digit "1" of the fingerprint code, and press Button "#" to confirm	The LED displays the fingerprint code "01" flashing
↓	
Press Button "#" to reconfirm the fingerprint code "01"	The LED displays fingerprint code "01", with red light on the fingerprint window
↓	
Put the finger to be enrolled on the fingerprint collection window, and collect twice ①	When the red light of the fingerprint window is on, press with the finger; after the beep, remove the finger and press one more time. A long beep will sound and the two collections are successfully completed
↓	
The first master fingerprint is set	The LED displays the code "01" and enrollment finished. Light on fingerprint window turns off and the LED displays "0", continue to set other fingerprints

Notes:

1. If the buzzer makes two short beeps, and the red indicator light flashes, the setup fails;
2. Each lock can only set 3 master fingerprints with code "00-02", and the master fingerprints can delete each other, open the door, setup passage mode, as well as authorize and setup or delete the member fingerprints and spare password;
3. After successful enrollment of the first master fingerprint, continue operation while the LED displays "0-" to enroll other fingerprints needed; or else the LED will stop display two seconds later;
4. When inputting fingerprint code, you can press Button "*" to cancel current operation and re-input, or press Button "*" during operation to exit setup state;
5. Refer to "Notes" of "Right method to apply fingerprint" (P 02) for operation ①.

Enrollment of member fingerprints (take user "03" as an example)

Operational procedure	Indication of the lock
Put the master finger that has been enrolled on the fingerprint window and enter door open state ↓	Green light is on, and the LED displays the code of the master fingerprint
Press Button "+" to enter the enrollment mode ↓	A beep sound heard, and the LED displays "0-"
Press Button "+" or "-" to adjust the first digit "0" of the fingerprint code, and press Button "#" to confirm the choice. ↓	The figure just set jumps to the tens place, and the ones place displays "0"
Continue to press Button "+" or "-" to adjust the second digit "3" of the fingerprint code, and press Button "#" to confirm ↓	The LED displays the fingerprint code "03" and flashes alternately.
Press Button "#" to reconfirm the fingerprint code "03" ↓	The LED displays fingerprint code "03" with the red light on the fingerprint window is on
Put the finger to be enrolled on the fingerprint collection window, and collect twice ↓	When the red light of the fingerprint window is on, press with the finger; after the beep, remove the finger and press one more time. A long beep will sound and the two collections are successfully completed
Member fingerprint 03 is enrolled	Continue to set other fingerprints while the LED displays "0-"; or else the display will stop two seconds later, with green lights turn off.

Notes:

1. If the buzzer makes two short beeps, and the red indicator light flashes, the member fingerprint setup fails;
2. After successful enrollment of a member fingerprint, continue operation while the LED displays "0-" to enroll other fingerprints needed; or else the LED will stop display two seconds later;
3. The enrollment of the member fingerprints can only be completed under the authorization of the master fingerprint;
4. The fingerprint codes are correspondent with the members. The above explanation takes the user with fingerprint code "03" as an example;
5. When inputting fingerprint code, you can press Button "*" to cancel current operation and re-input, or press Button "*" during operation to exit setup state;

Setup of spare password (code 99)

Operational procedure	Indication of the lock
Put the master fingerprint on the fingerprint window and enter door open state	Green light is on, and the LED displays the code of the master fingerprint
Press Button "+" to enter the enrollment mode	A beep sound heard, and the LED displays "0-"
Press Button "+" or "-" to choose the first digit "9" of the password code, and press Button "#" to confirm the choice	The LED displays the figure "9" just set which jumps to the tens place, and the ones place displays "0"
Continue to press Button "+" or "-" to adjust the second digit "9" of the password code, and press Button "#" to confirm	The LED displays the fingerprint code "99" and flashes alternately
Press Button "#" again to confirm the password code "99"	The LED displays "- 0" after a beep, both green and red indicator light on.
The password composes of 6 digits. Press Button "+" or "-" to choose the first digit of the password, and press Button "#" to confirm the choice ①	The LED displays the figure selected after a beep, the figure jumps to the tens place, and the ones place displays "0"
Set other 5 digits following the above step ①, press Button "#" to enter each digit of the password.	Green light on and red light off after two long beeps, and the LED displays the last two digits of the password is set
The spare password is set	The LED displays "0-", the display will stop 5 seconds later, with green lights turn off.

Notes:

1. The original password of the new lock (factory setting) is "111111", and this original password will be cleared at the time of the successfully enrollment of the master fingerprint.
2. The spare password must be of 6 digits, which is an arbitrary combination of the figures "0-9".
3. Only one spare password can be set for each lock, and with the code "99". The spare password is the only password that can open the door, you can change it and delete it; please refer to P.15 for deletion of password;
4. During the setting, the confirmed figure will be moved automatically to the tens place of the LED, with the figure to choose and confirm at the ones place;

Deletion of fingerprints (take user "03" as an example)

Operational procedure	Indication of the lock
Put the master finger that has been enrolled in the fingerprint window and enter door open state	Green light is on, and the LED displays the code of the master fingerprint
↓	
Press Button "-" to enter the deletion mode	The LED displays "0-"
↓	
Press Button "+" or "-" to choose the first digit "0" of the password code, and press Button "#" to confirm the choice	The LED displays the figure "0" just set which jumps to the tens place, and the ones place displays "0"
↓	
Continue to press Button "+" or "-" to adjust the second digit "3" of the fingerprint code, and press Button # to confirm	The LED displays the fingerprint code "03" and flashes alternately
↓	
Press Button "#" to reconfirm the fingerprint code to be deleted, and the deletion of the member fingerprint is completed	The light on the fingerprint window flash one time with a relatively sharp and quick beep, the LED displays "0-" and stops display two seconds later

Notes:

1. Continue to input fingerprint code while the LED displays "0-", and repeat the operation for deletion of other fingerprint;
2. The fingerprint codes "00-02" are master fingerprints, while "03-98" are member fingerprints;
3. The deletion of the member fingerprint can only be completed when its fingerprint code is available.

VI. Deletion of password (Code "99")

Operational procedure	Indication of the lock
Put the master finger that has been enrolled on the fingerprint window and enter door open state	Green light is on, and the LED displays the code of the master fingerprint
Press Button "-" to enter the deletion mode	The LED displays "0-"
Press Button "+" or "-" to choose the first digit "9" of the password code, and press Button "#" to confirm the choice	The LED displays the figure "9" just set which jumps to the tens place, and the ones place displays "0"
Continue to press Button "+" or "-" to adjust the second digit "9" of the fingerprint code, and press Button # to confirm	The LED displays the fingerprint code "99" and flashes alternately.
Press Button "#" to reconfirm the fingerprint code to be deleted, and the deletion of the member fingerprint is completed	The light on the fingerprint window flash one time with a relatively sharp and quick beep, the LED displays "0-" and stops display two seconds later

II. Daily use state

Open the door with fingerprint

Start automatically

Operational procedure	Indication of the lock
Put the finger enrolled on the fingerprint window, and the lock will activate automatically. Hold the finger for recognition, and enter the door open state	The green light is on, the LED displays the fingerprint code, and the electric engine makes a rolling sound
Turn the handle to open the door	Otherwise it will automatically be locked 5 seconds later

Start manually

Operational procedure	Indication of the lock
Press Button "#" to activate the lock	The green light is on, and the red light on the fingerprint window is on
Put the finger enrolled on the fingerprint window, hold the finger for recognition, and enter the door open state	The LED displays the fingerprint code, and the electric engine makes a rolling sound
Turn the handle to open the door	Otherwise it will automatically be locked 5 seconds later

• Open the door with password

Operational procedure	Indication of the lock
Press Button "+" or "-" directly	The LED displays "-0"
↓	
Input the 6-digit spare password. Press Button "#" to enter each digit of the password.	The green light is on all along after a beep, and the electric engine makes a rolling sound, with "99" display on the LED
↓	
Turn the handle to open the door	Otherwise it will automatically be locked 5 seconds later

Notes:

1. Method of password input: Press Button "+" or "-" to choose the first digit of the password, and press Button "#" to confirm the choice. Continue to choose other five digits with the same method;
2. In case the automatically start function fails, press Button "#" to start it manually;
3. If the operation fails, the red light will be on, and two short beeps sound.

Setup passage mode

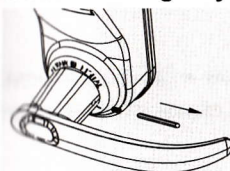
Press Button "*" or "#" within 5 seconds after the door opened, and the passage mode is set.

Note: Passage mode refers to the state in which the door can be opened immediately by turning the handle without recognition of fingerprint or password. It is for the convenience of conferences or gathering.

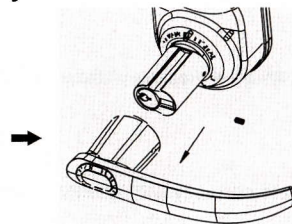
Cancel passage mode

When the lock is in passage mode, place an enrolled fingerprint or input the valid password to cancel the passage mode.

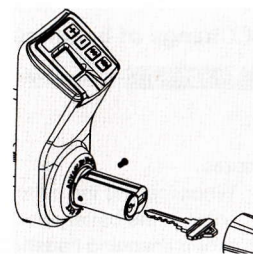
VIII. Use of emergency key



Remove the screw with an instrument



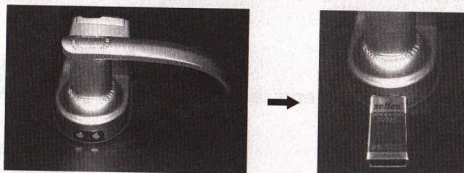
Remove the handle and you will see the key hole



Insert the key and open the door

IX. Use of external power

If it fails to operate the lock normally due to insufficient voltage, use a 9V battery for emergency power supply (pay attention to the positive and negative poles of the battery), and then place an enrolled fingerprint or input the spare password to open the door.



X. Change of batteries

Procedure → Remove the battery cover → Remove all the used batteries → Load new batteries →

Change of batteries complete

Notes:

1. When loading the batteries, operate correctly with attention to the sign of positive and negative poles in the battery box!
2. When changing batteries, never mix the new battery with the used.
3. Please preserve the environment by handing over the used batteries to designated place for reclaim

After Sales Service

Please contact your local dealers for the maintenance service.

• Solution for common error

Phenomenon	Cause	Solution
Press the finger on the fingerprint collection window to open the door, red light is on together with two short beeps, and fails to open the door.	1. This fingerprint might be illegal 2. This fingerprint has already been cleared	Apply a valid fingerprint
Open the door with a valid fingerprint, red light is on with two short beeps, and fails to open the door.	1. There is a large difference with the position of the valid fingerprint 2. The fingerprint is damaged	Press the finger on the collection window again, trying to minimize the difference of the position with that at the time of enrollment
Red light is constantly on	1. Low battery voltage 2. PCB failure	1. Change the batteries 2. Check Cable connection
Alarm sounds when open the door	Low battery voltage	Change the batteries
No response after pressing the buttons	No battery	Change the batteries
Often fail to verify the fingerprints	1. The finger is too dirty 2. The finger is too dry 3. The finger is too wet 4. The collection window is too dirty 5. The finger press on the collection window incorrectly	1. Clean the finger 2. Moisten the finger (e.g. touch the forehead with the finger) 3. Wipe the finger 4. Clean the collection window 5. Press the finger with the method on Page 2
Fail to enter the enrollment or deletion mode	1. The finger for unlock is not the master finger 2. The operational procedure is incorrect	1. Confirm that you unlock with the master finger 2. Review the instructions or contact the after sales service

Trinity 788操作說明

www.adelfingerprint.com

- 感謝您購買本產品
- 使用前請仔細閱讀本操作說明
- 請妥善保管此操作說明以便於日後參考