

QUALITY GUARANTEE

Product :	Model:		
Purchase Date :	Year	Month	Day
Client Name :			
Contact Add :			
Contact Tel:			

GUARANTEE EXPLANATION

- 1.Fill in the card according to the facts.
- 2.The card must be sealed with franchiser's cachet, or it's inefficient.
- 3.Guarantee date:If any fault found within 1year, our factory repair it freely.
- 4.The following situations are not within guarantee range:
 - (1)Man-made mistakes. eg:the disrepair of shell or bottom.
 - (2)Assemble or disassemble it by oneself.
 - (3)Operate it beyond temperature, humidity ratings.
 - (4)Beyond the guarantee date.
 - (5)Other faults which are not made by our factory
- 5.If need guarantee, please contact the franchiser whom you purchase the Mouse from and confirm it.
- 6.Please keep the guarantee properly. We won't supply it again if you lose it.



Wireless Bluetooth Keyboard User's Guide

Thanks for purchasing our Bluetooth Keyboard, it's with 68 keys.
This creative and easy-to-use Bluetooth Keyboard will bring you a whole new wireless life experience.

System Requirement

- iPad, New iPad, Mac OS, iPhone.
- Windows OS (Windows XP, Windows Vista, Win7).

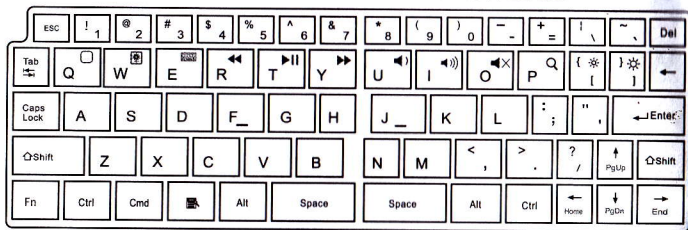
Main Features

- Bluetooth Version: Bluetooth V3.0
- 68 keys design, with combo multi-function
- ABS keypad design, comfortable and ergonomic design
- Built-in intelligent power manage software for power conservation
- Built-in software solutions with Bluetooth human interface device and comply with the standard version of the Bluetooth SIG Bluetooth 3.0
- Power by build-in Li-ion rechargeable battery
- Working range: 10m

Specifications:

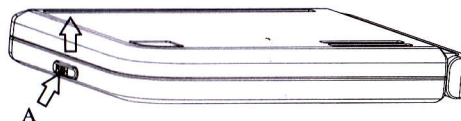
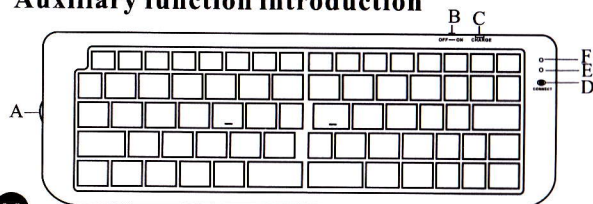
- Frequency band: 2.4 - 2.4835GHz unlicensed ISM band
- Receiving sensitivity: -75dbm (standard)
- Battery Volume: 310mAh
- Working Current: <1.8mA
- Standby current: <0.2mA
- Charging time: 3-4 hours
- RF output power: up to 4dbm as maximum, good for your health with lowest radiates
- Operation distance: 0 - 10 m
- Dimension: 125*84*18mm
- Net weight: 138g

Multimedia Function With iPad/New iPad



F _n	+Combo Multimedia Function	O	Mute
Q	Home	P	Spotlight search
W	Picture frame mode	{	Screen light down
E	Virtual keyboard	}	Screen light up
R	One the song	PgUp	Page Up
T	Play/Pause	PgDn	Page Down
Y	The next song	Home	Home
U	Volume down	End	End
I	Volume up		

Auxiliary function introduction

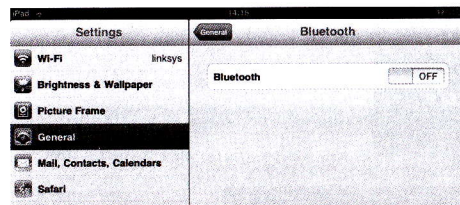


- A Push here to open the folded keyboard
- B The power ON/OFF
- C USB Charge
- F The blue Led
- D Pairing button
- E The red Led

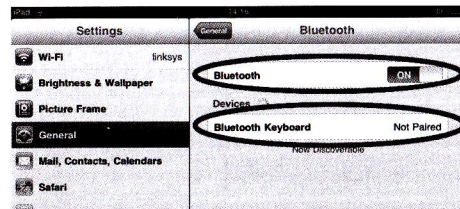
Installation Guide

Connect with iPad / New iPad / iPhone

1. Push the power button to "ON", and press "PAIRING" button. The blue light is flashing, now the keyboard is in pairing mode.
2. On your iPad / New iPad / iPhone, select "settings"----"General".



3. Turn ?Bluetooth? on, it will start searching bluetooth devices.
4. Once your device finds the keyboard, select ?Bluetooth Keyboard? from the list.



5. Your device will now give you a passkey. Enter this key onto the keyboard, and press Enter to complete the pairing(also on the keyboard).



Now the keyboard is connect with your iPad successfully.

Connect with computer

Before you connect the Bluetooth Keyboard, please make sure there is bluetooth function in your computer.

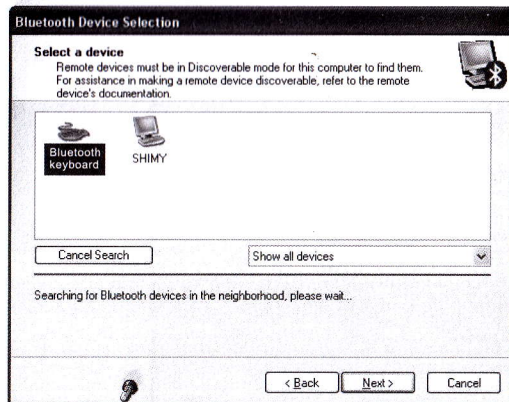
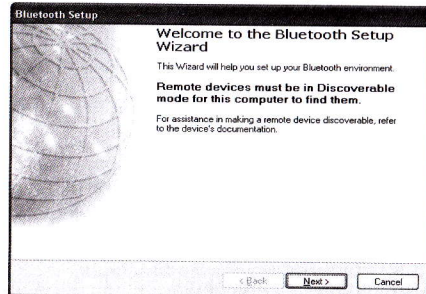
Software available like Widcomm(Recommended), IVT or the Microsoft built-in software...

1. Turn the keyboard ON, and press the pairing button. The blue light is flashing, now the keyboard is in pairing mode.

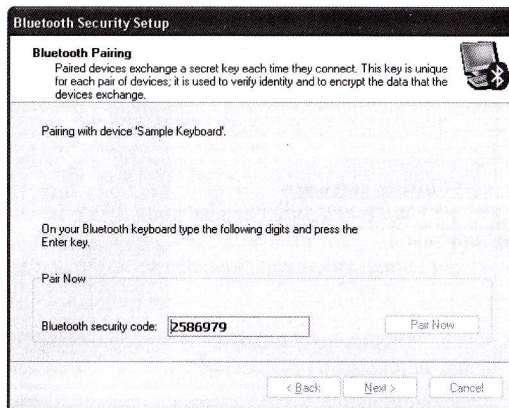
A: Match on Widcomm (recommended)

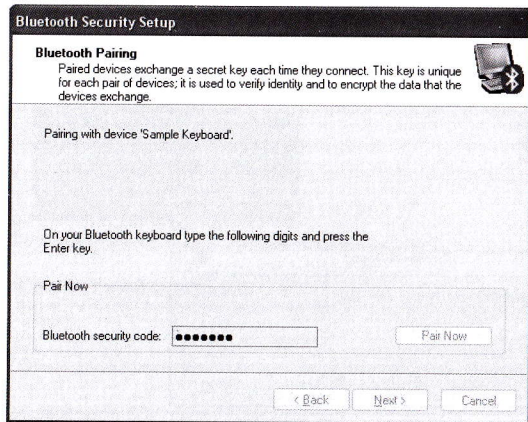


1. Double click the Icon in the main Window pops up; select Bluetooth ---Add Bluetooth facility. Click Next button In the Setup Guild window.



2. When the system finds the Keyboard, select it and click Next.
3. Input the stochastic Match Code in bluetooth keyboard, and press Enter.



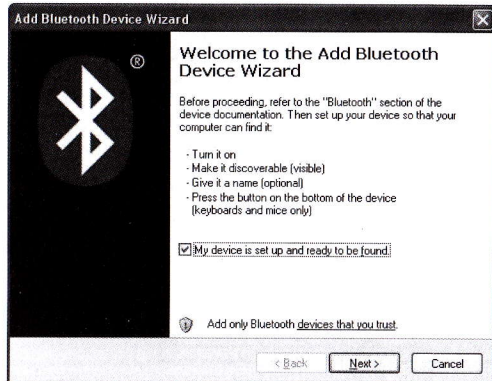
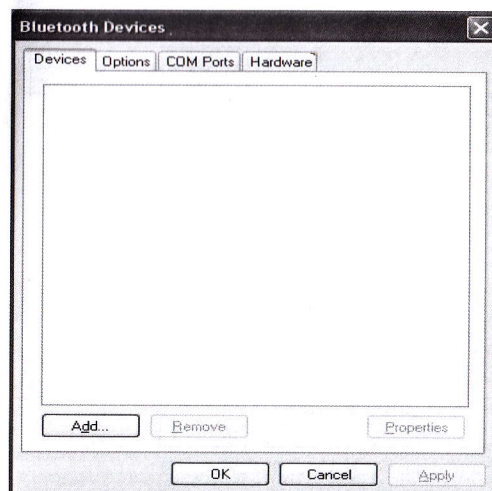


4. Now you can use your keyboard at ease.

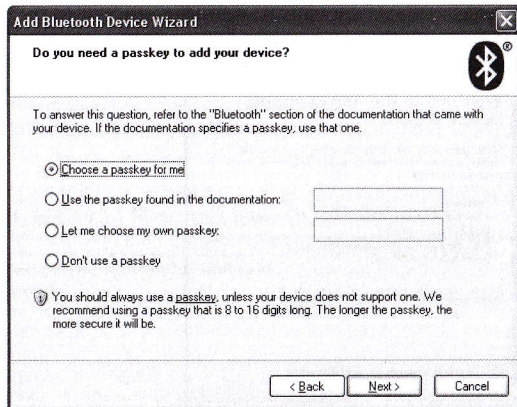
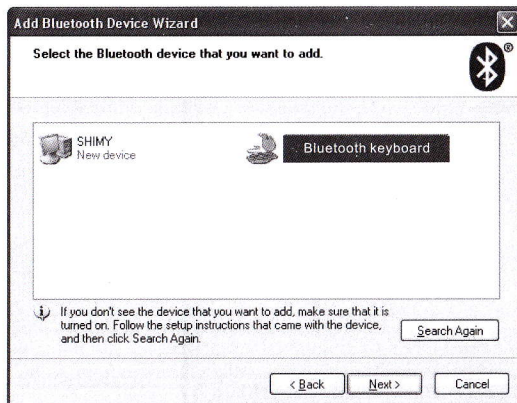
Tips:
If no signal received after 10 minutes, the keyboard will change to the power safe model. If you want to make it into use, just click the "Enter" key. After the connection between the keyboard and dongle, if you drag off the Dongle or turn off the Computer, the keyboard will shut down, click the "Enter" key of the keyboard will wake it up.

B. Match on Microsoft built-in software

1. Make sure that the Bluetooth Function has been activated. Double click the Bluetooth Icon on the Task Bar or in the Control Panel, open the "Bluetooth Management" window, click "Add", tick off "acility is ready for searching", click "Next"

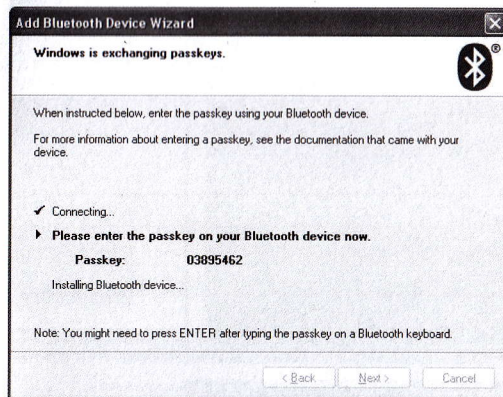


2. Wait till the keyboard is found, select keyboard and click "Next" ..



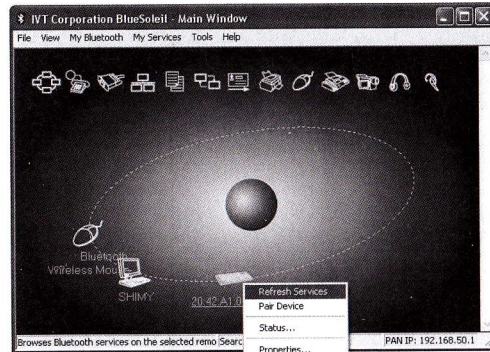
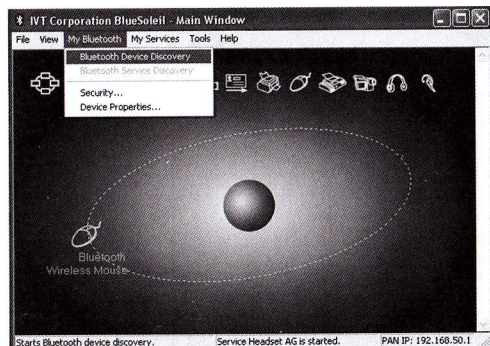
3. Select Choose a pass key for me, click Next.

4. Input the pass key and press Enter in bluetooth keyboard, click Next, the system will finish the installation of the new facility automatically..

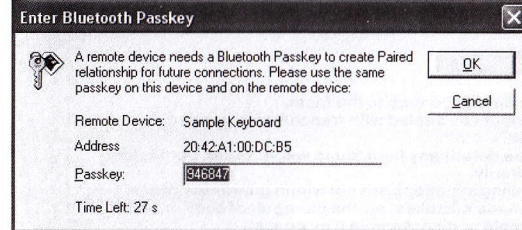
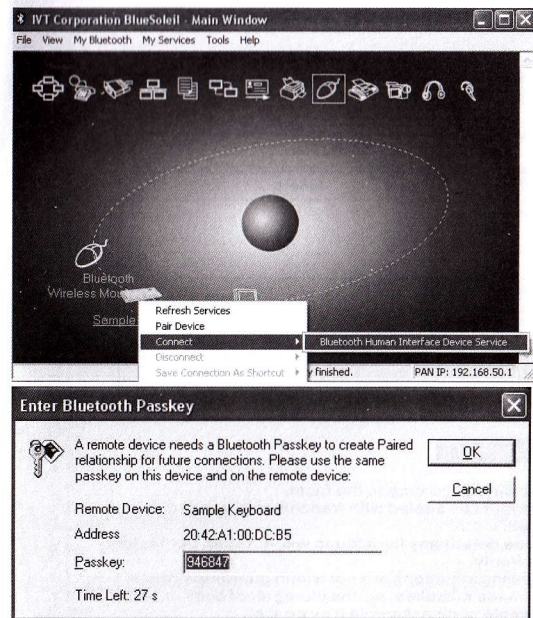


C. Match on IVT Software

1. Make sure that the Bluetooth function is active. Double click the Bluetooth Icon, open the Management window, select Search for Bluetooth facilities or click the Round Ball in the middle of the window.



2. Click the Bluetooth Keyboard found, click the right button for Refresh Service.
3. Select the Bluetooth Keyboard again, click the right button for Connect-Bluetooth Input Service, input the stochastic pass key, the system will auto install the HID facility. After that you can use your Bluetooth Keyboard at ease.



FAQ:

If unable to connect the Bluetooth Keyboard to the computer, or the Keyboard work unconventionally, please try the steps below:

1. Before you use your Bluetooth Keyboard, please make sure you have done the Bluetooth Dongle installation procedure, and the Bluetooth facility is turned on.
2. Make sure that the Computer is connected to the Bluetooth Keyboard. If they are matched to each other before, then under the Standby State, just click the "enter" key of the keyboard.
3. Make sure that the keyboard is within the effective range---10M.
4. Make sure that there's no change of the Bluetooth facility. If anything changed, please kind rematch.
5. If your Bluetooth facility is connected to other Bluetooth products, please kindly confirm that the speed of the Bluetooth facility is enough.
6. Please kindly check the batteries. If they are short of power, replace them for new ones.