



is phone, the factory default factory language is Chinese, in order to change to the

1. click on the settings icon 3. click on the A icon, 4. click on the language bar, 5. click on t

© 2015. All rights are reserved. No part of this document may be reproduced without permission.

While all efforts have been made to ensure the accuracy of all contents in this manual, we assume no liability for errors or omissions or statements of any kind in this manual, whether such errors or omissions or statements resulting from negligence, accidents, or any other cause. The contents of this manual are subject to change without notice.

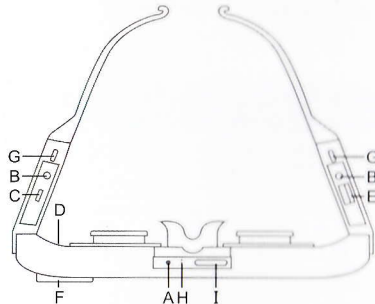
Protect our environment! We strive to produce products in compliance with global environmental standards. Please consult your local authorities for proper disposal.

Note: User's Manual is Just to guide the user about the functionality of the smartsuper glass. This does not substantiate any certificate of technology. Some functions may vary due to modifications and up-gradation of software or due to printing mistake.

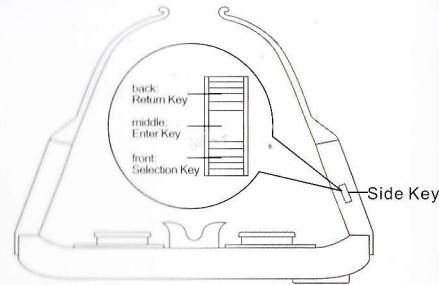
Please ensure you read the important product use guide before using the product.

Your Smart Super glass

The smart super glass appearance is shown as below. The picture is for reference only; your smart super glass may be different. Please take your actual super glass as the standard.



- | | |
|-----------------------|------------------------------|
| A Power Key | F Camera |
| B Earphone Connector | G Detachable leg snap button |
| C Charger Connector | H Pilot Light |
| D Reset Key | I SD Card |
| E USB/Mouse Connector | |

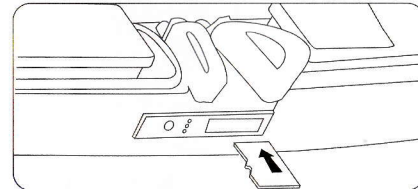


Key Descriptions

Key	Description
Power Key	Long press the key to turn on the super glass. In the power on status, press the key to lock screen.
Reset Key	Press the key to disconnect battery.
Earphone connector	Plug the earphone into the earphone connector.
Charger connector	Plug the USB data line into the charger connector.
USB/Mouse connector	Plug the mouse data line into the mouse connector.
Side Key	The side key is made up of Front, Middle and Back.
Side key-back	Return Key: long press the to back.
Side key-middle	Enter Key: long press the to change the 2D/3D.
Side key-front	Selection Key

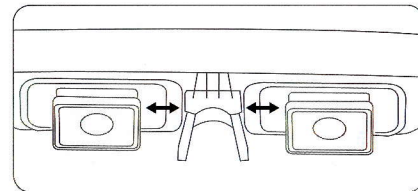
Start to Use

Remove or install the Memory Card

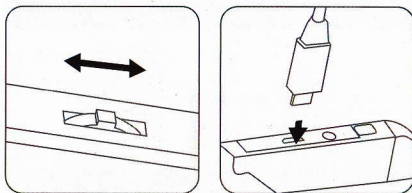


Insert the external micro SD card into the slot with the gold contact facing down. To remove the micro SD card, gently press and slide it out.

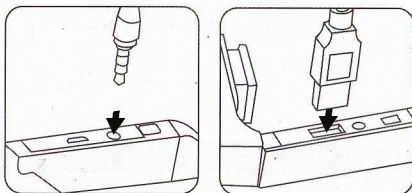
Adjust the distance of pupil



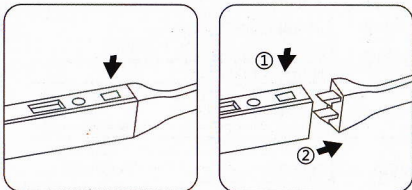
Toggle the side key and charging



Insert earphone and mouse



Replace the leg



Charge the Battery

1. Plug one end of the charger into super glass.
2. Connect another end of the charger to the socket.
3. Start charging. It can be charged whether power on or power off. when the indicator light red means it is been charged. When the indicator light green means charge is completed.
4. Unplug the charger from the socket.
5. Disconnect the charger and the super glass.

For Your Safety

Before using your smart super glass, please read the following important information to eliminate or reduce any possibility of causing damage and personal injury.



Safe power on
Do not use your super glass where it is forbidden to use or it might cause disturbance or danger.



Safe transportation first
Please observe all local laws and regulations. Do not use your super glass while driving. Safe transportation should be considered first when driving.



Disturbance
glass' performances may fluctuate during a disturbance.



Turn off when in the hospital
Please follow location-specific applicable limitations. Please switch your super glass off when near a medical instrument.



Turn off on an airplane Please follow location-specific applicable limitations. Do not use your super glass on an airplane.



Turn off when at a gasoline station
Do not use your super glass at a filling station or around fuels or chemicals.



Turn off around explosive Area
Please observe location-specific applicable limitations. Do not use your super glass near an area where explosions can occur.



Proper use As described in this manual, your super glass can be used only in the locations free from glass usage restrictions. Please do not touch the antenna area of your super glass.



Use qualified after sales service
Only a qualified technician can install or repair your super glass. Please contact authorized service center in case of glass failure.



Accessories and batteries
Only use the authorized accessories and batteries.



Backup
Remember to make a backup or keep a written record of all important information saved in your super glass.



Connect to other devices
Please read the user manual of the device to get more detailed security instructions before connecting to other devices and do not connect to an incompatible product.

Improper use will invalidate the warranty! These safety instructions also apply to original accessories.

Care and Maintenance

Battery Care

- Your device is powered by a rechargeable battery. When the power is weak, please charge the battery. In order to extend the lifespan of the battery, use all the battery's power before recharging.
- Unplug the charger from the electrical plug and the device when not in use. Do not leave the battery connected to a charger more than a week. Overcharging may shorten its lifespan.
- Extreme temperatures can affect the ability of your battery to charge. Battery needs the fit temperature. If the surrounding temperature is over 40°C, the battery cannot be charged.
- Use the battery only for its intended purpose. Never use any charger or battery that is damaged.

Do not short-circuit the battery. Accidental short-circuiting can occur when a metallic object such as a coin, clip, or pen causes direct connection of the positive (+) and negative (-) terminals of the battery. (These look like metal strips on the battery.) Short-circuiting the terminals may damage the battery or the connecting object.

Leaving the battery in hot or cold places, such as in a closed car in summer or a freezer in winter conditions, will reduce the capacity and lifetime of the battery. Always try to keep the battery between 59°F and 77°F (15°C and 25°C). A hot or cold battery may not function temporarily, even when the battery is fully charged.

Battery performance is particularly limited in temperatures below freezing.

Do not dispose of batteries in a fire! Dispose of batteries according to local regulations. Please recycle when possible. Cellphones are not considered household waste.

Super glass maintenance

- Keep the device dry. Precipitation, humidity, and all types of liquids or moisture can contain minerals that will corrode electronic circuits. If your device does get wet, remove the battery and allow the device to dry completely before replacing it.
- Do not store the device in hot or cold areas. High temperatures can shorten the life of electronic devices, damage batteries, and warp or melt certain plastics.
- Do not store the device in cold areas. When the device returns to its normal temperature, moisture can form inside the device and damage electronic circuit boards.
- Do not attempt to open the device other than as instructed in this guide.
- Do not drop, knock, or shake the device. Rough handling can break internal circuit boards and fine mechanics.
- Do not use harsh chemicals, cleaning solvents, or strong detergents to clean the device.
- Do not paint the device. Paint can clog the moving parts and prevent proper operation.
- Use only the supplied or an approved replacement antenna. Unauthorized antennas, modifications, or attachments could damage the device and may violate regulations governing radio devices.

All of the above suggestions apply to your device, battery, charger, or any enhancement. If any device is not working properly, take it to the nearest authorized service facility for service.

Caution: The manufacturer assumes no responsibility for the consequences of the users does not comply with the above suggestions or misuse of the super glass.

Content

Welcome	2
Your smart super glass	4
Key Descriptions	5
Start to Use	6
Charge the Battery	6
1. Settings	6
2. File Manager	8
3. Camera	8
4. Bluetooth	8
5. WLAN	8
6. Browser	9
7. Music	9
8. Gallery	9
9. Wireless update	9
10. Player	9
11. Other APPS	9
12. Sense flip clock	10
Widgets	10
Care and Maintenance	10

Welcome

Congratulations on your purchase of the super glass. Your smart super glass provides many functions which are practical for daily use, such as a video player, camera, MP3 player, video recorder, and more. Your super glass can also connect mouse, or other device using a USB data cable.

You can read the manual to understand how to use the smart super glass and experience the well-established functions and simple operation method. Please use the original accessory in order to achieve the best use of effects. Use of non-original components results in of the damage caused of by machinery, in which case we shall not be responsible.

For Your Safety

Before using your smart super glass, please read the following important information to eliminate or reduce any possibility of causing damage and personal injury.



Safe power on
Do not use your super glass where it is forbidden to use or it might cause disturbance or danger.



Safe transportation first
Please observe all local laws and regulations.
Do not use your super glass while driving.
Safe transportation should be considered first when driving.



Disturbance
glass' performances may fluctuate during a disturbance.



Turn off when in the hospital
Please follow location-specific applicable limitations. Please switch your super glass off when near a medical instrument.



Turn off on an airplane Please follow location-specific applicable limitations.
Do not use your super glass on an airplane.



Turn off when at a gasoline station
Do not use your super glass at a filling station or around fuels or chemicals.



Turn off around explosive Area
Please observe location-specific applicable limitations.
Do not use your super glass near an area where explosions can occur.



Proper use As described in this manual, your super glass can be used only in the locations free from glass usage restrictions. Please do not touch the antenna area of your super glass.



Use qualified after sales service
Only a qualified technician can install or repair your super glass. Please contact authorized service center in case of glass failure.



Accessories and batteries
Only use the authorized accessories and batteries.



Backup
Remember to make a backup or keep a written record of all important information saved in your super glass.



Connect to other devices
Please read the user manual of the device to get more detailed security instructions before connecting to other devices and do not connect to an incompatible product.

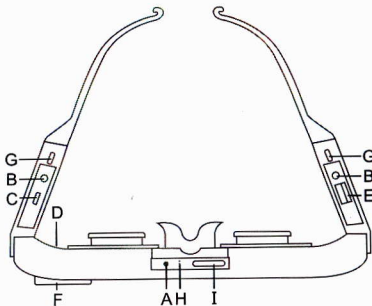
Improper use will invalidate the warranty! These safety instructions also apply to original accessories.

Backup Copies

Remember to make back-up copies or keep a written record of all important information stored in your super glass.

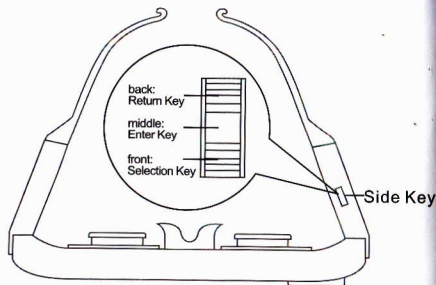
Your Smart Super glass

The smart super glass appearance is shown as below. The picture is for reference only; your smart super glass may be different. Please take your actual super glass as the standard.



- A Power Key
- B Earphone Connector
- C Charger Connector
- D Reset Key
- E USB/Mouse Connector

- F Camera
- G Detachable leg snap button
- H Pilot Light
- I SD Card



Key Descriptions

Key	Description
Power Key	Long press the key to turn on the super glass. In the power on status, press the key to lock screen.
Reset Key	Press the key to disconnect battery.
Earphone connector	Plug the earphone into the earphone connector.
Charger connector	Plug the USB data line into the charger connector.
USB/Mouse connector	Plug the mouse data line into the mouse connector.
Side Key	The side key is made up of Front, Middle and Back.
Side key-back	Return Key: long press the to back.
Side key-middle	Enter Key: long press the to change the 2D/3D.
Side key-front	Selection Key

Start to Use

Remove or install the Memory Card

Insert the external micro SD card into the slot with the gold contact facing down. To remove the micro SD card, gently press and slide it out.

Charge the Battery

1. Plug one end of the charger into super glass.
2. Connect another end of the charger to the socket.
3. Start charging. It can be charged whether power on or power off. When the indicator light red means it is been charged. When the indicator light green means charge is completed.
4. Unplug the charger from the socket.
5. Disconnect the charger and the super glass.

1. Settings

Wireless & Networks

In this menu, you can select and set Wi-Fi, Bluetooth.

Wi-Fi

You can connect to a wireless LAN (Wi-Fi), use it to access and download with high speed. In Menu/Settings/WIRELESS & NETWORKS, slide the icon beside Wi-Fi toward right to turn on Wi-Fi. Press Wi-Fi to check available Wi-Fi networks. Select one open network, you can access to the network directly. If the network you selected is encrypted, you need to input password.

Bluetooth

The super glass supports Bluetooth. It can exchange information between devices including mobile phones wirelessly. Through Bluetooth, you can sync phone and computer, exchange data with other Bluetooth devices, and can connect to Bluetooth mouse.

In Menu/Settings/WIRELESS & NETWORKS, slide the icon beside Bluetooth toward right to turn on Bluetooth and set. Before transmit data, you may need to match with other Bluetooth devices.

Device

In this menu, you can set sound and display, check storage and battery, and manage apps.

| Personal

- **Location Access**

Select whether to access to my location, whether to turn on GPS satellites, or whether to use Wi-Fi network location.

- **Security**

DEVICE ADMINISTRATION, and CREDENTIAL STORAGE in this menu.

- **Language & Input**

Select and set Language, keyboard & input methods, speech, and mouse/trackpad.

- **Backup & Reset**

In this menu, select Factory data reset and then select Reset this machine to clear all data in the glass memory. Select DRM reset to delete all DRM licenses.

| Accounts

- **Add Account**

To add new account of Email, Google and so on.

| System

- **Date & Time**

Set time and date for the phone.

- **Scheduled Power On & Off**

Set time to power on/off the phone automatically.

- **Accessibility**

To set accessibility functions for the super glass.

- **Printing**

- **Developer options**

- **About this machine**

To check status, legal information, etc.

2. File Manager

In this menu, you can select to check this machine storage and SD card. Allow you to manage files.

3. Camera

By using the camera application, you can take photos or video records for around people or events anytime. Press the Camera icon in main menu to enter. Press the shoot icon or record icon to take photos or video records. Press the icons on screen or to set parameters of the camera or recorder.

4. Bluetooth

In the menu, you can turn on or off the bluetooth.

5. WLAN

In the menu, you can turn on or off the WIFI.

6. Browser

You can use your smart super glass to access Wireless Application. To browse pages, you must subscribe to the data service from your service provider and use Wifi function.

Select the website list on screen or input URL in address bar to visit.

7. Music

Select Music in main menu. Press Artists, Albums, Songs, and Playlists at the top of screen to change category. Select one audio file to play the music. Press the icons on screen to operate the audio player.

8. Gallery

You can use Gallery to view or manage photos and videos.

9. Wireless update

You can update the latest software in the menu.

10. Player

You can use Video player to view or manage videos.

11. Other apps

You can download and install the android version of the application software.

12. Sense flip clock

Press the icon in main menu. And you can update the time and the weather forecast.

Widgets

Long press the mouse, you can enter the widgets. In the widgets list, you can select desired widget to add to idle screen.

Care and Maintenance

Battery Care

- Your device is powered by a rechargeable battery. When the power is weak, please charge the battery. In order to extend the lifespan of the battery, use all the battery's power before recharging.
- Unplug the charger from the electrical plug and the device when not in use. Do not leave the battery connected to a charger more than a week. Overcharging may shorten its lifespan.
- Extreme temperatures can affect the ability of your battery to charge. Battery needs the fit temperature. If the surrounding temperature is over 40°C, the battery cannot be charged.
- Use the battery only for its intended purpose. Never use any charger or battery that is damaged.
- Do not short-circuit the battery. Accidental short-circuiting can occur when a metallic object such as a coin, clip, or pen causes direct connection of the positive (+) and negative (-) terminals of the battery. (These look like metal strips on the battery.) Short-circuiting the terminals may damage the battery or the connecting object.

- Leaving the battery in hot or cold places, such as in a closed car in summer or a freezer in winter conditions, will reduce the capacity and lifetime of the battery. Always try to keep the battery between 59°F and 77°F (15°C and 25°C). A hot or cold battery may not function temporarily, even when the battery is fully charged.
- Battery performance is particularly limited in temperatures below freezing.
- Do not dispose of batteries in a fire! Dispose of batteries according to local regulations. Please recycle when possible. Cellphones are not considered household waste.

I Super glass maintenance

- Keep the device dry. Precipitation, humidity, and all types of liquids or moisture can contain minerals that will corrode electronic circuits. If your device does get wet, remove the battery and allow the device to dry completely before replacing it.
- Do not store the device in hot areas. High temperatures can shorten the life of electronic devices, damage batteries, and warp or melt certain plastics.
- Do not store the device in cold areas. When the device returns to its normal temperature, moisture can form inside the device and damage electronic circuit boards.
- Do not attempt to open the device other than as instructed in this guide.
- Do not drop, knock, or shake the device. Rough handling can break internal circuit boards and fine mechanics.
- Do not use harsh chemicals, cleaning solvents, or strong detergents to clean the device.
- Do not paint the device. Paint can clog the moving parts and prevent proper operation.

- Use only the supplied or an approved replacement antenna. Unauthorized antennas, modifications, or attachments could damage the device and may violate regulations governing radio devices.

All of the above suggestions apply to your device, battery, charger, or any enhancement. If any device is not working properly, take it to the nearest authorized service facility for service.

Caution: The manufacturer assumes no responsibility for the consequences of the users does not comply with the above suggestions or misuse of the super glass.

Frequently Asked Questions

Frequently Asked Questions	Cause and Solution
Fail to turn on	Press the power key for over 2 second.
Fail to connect network	In case of Weak signal, please try and move to a location with strong signal and try connecting to the network again; Please ensure that you are not beyond the network coverage of service providers; Please contact your network provider for further information.
Fail to charge	May be due to poor contact. Please check if the plug is connected well. Please confirm if the environment temperature is within the range of 0°C ~40°C while charging.