

Minimalism vs Intelligentized



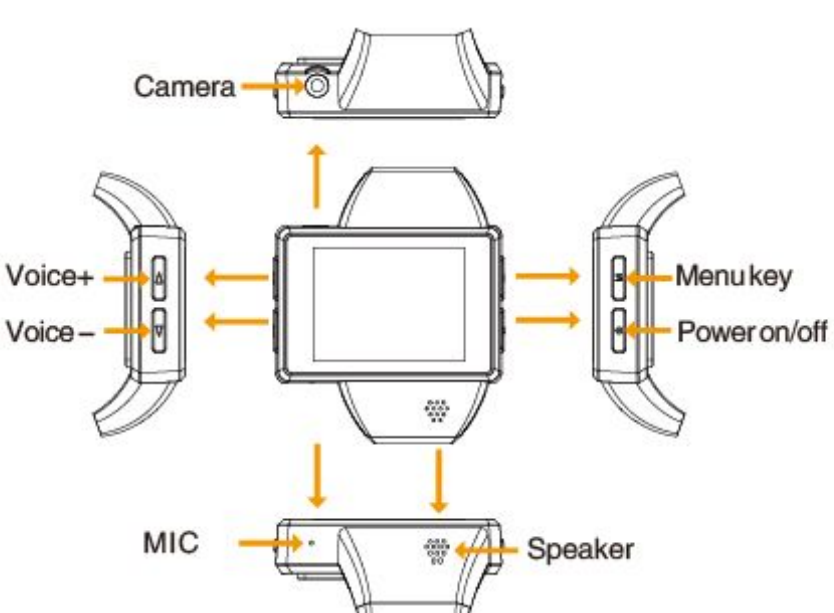
Android 2.2 intelligent watch phone

Android Watch Phone

1. Smart phone watch with Android 2.2 OS, WIFI, GPS, G-sensor
2. Camera: 2.0M
3. Screen: 2.0 inches 320*240 pixels
4. TFT displaying
5. Bluetooth answering and data transmission
6. Supports MP3/MP4/Record function
7. Transmit data by USB line
8. With a memory capacity of 500 pieces telephone directories
9. Frequency ranges: GSM850/900/1,800 and 1,900(GPRS), SIM
10. Accessories: Bluetooth headset, charger, USB connecting, manual

Pictures show here are for advertising only, please kindly prevail.

1 key instruction



[Menu key]

- ▶ In any interface, single click;

[Power on/off]

- ▶ When power off, click the key for 3 sec, power on.
- ▶ When power on, click the key for 3 sec, then it can be changed to silent mode, flight mode, power off.
- ▶ In any interface, single click, return to the front page or close dialog box or lock the screen.
- ▶ When in sleep mode, single click, wake up the watch phone.

[Voice-]

- ▶ In any interface, single click, reduce the volume
- ▶ When in standard mode, single click, adjust to silent mode

[Voice+]

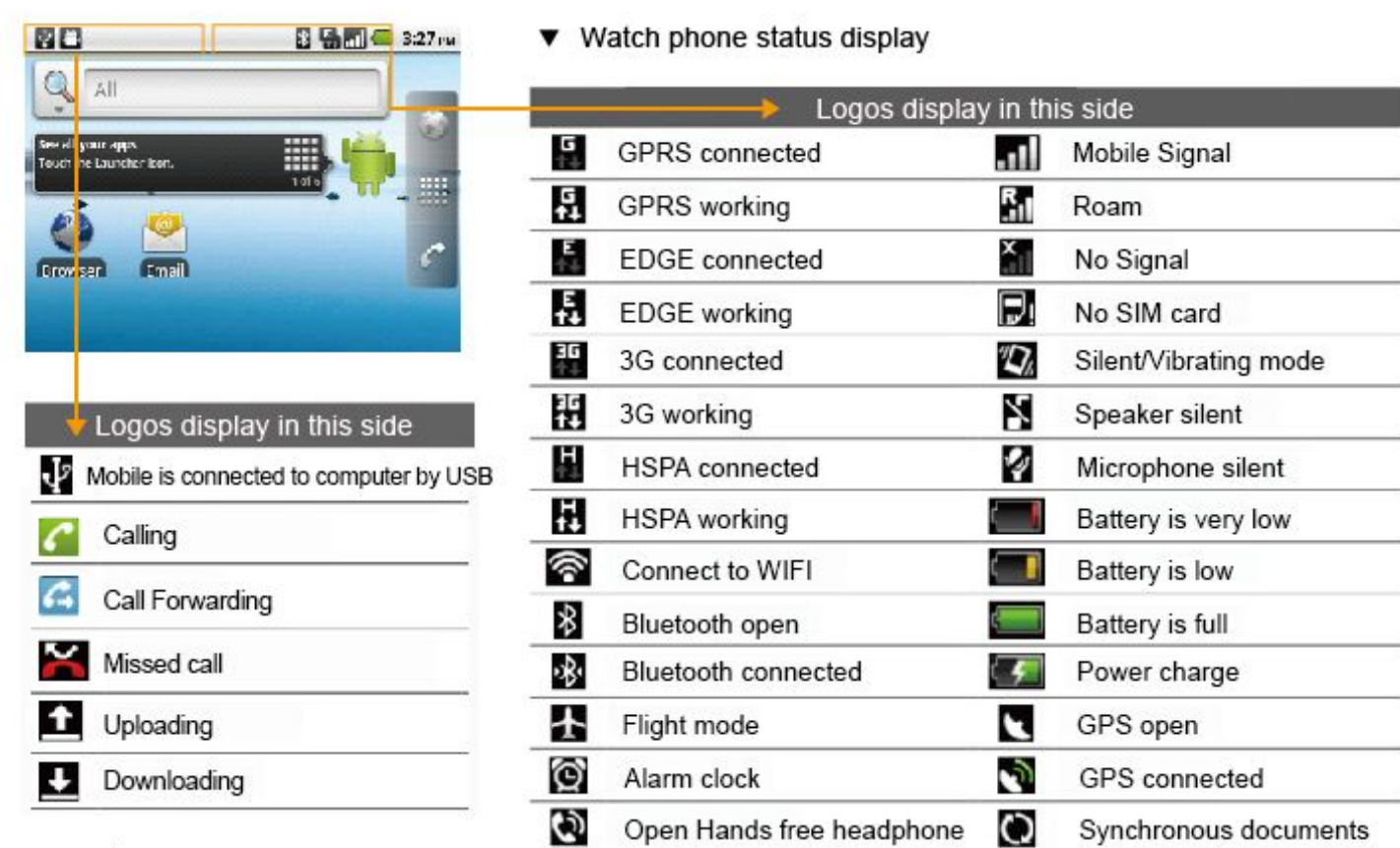
- ▶ In any interface, single click, increase the volume
- ▶ In silent mode, single click, adjust to standard mode

2 Basic function introduction——Main interface

- ▶ When in standby mode, slip with your finger on the screen to right side, it can be unlock and answer the call



3 Watch phone status and notice



4 Notice panel

- ▶ Notice icon display the new message, schedule, alarm clock and present calling status
- ▶ **Open notice panel**
When status bar showing the notice icon, hold and press the status, and slip with your finger, pull down it, then you can open the notice panel
- ▶ If there are several notice, just pull down the page, then you can check more notices.



▶ Close notice panel

Press the control list which is on the bottom of notice panel, then slip with your finger on the screen, or press the button "power on/off".

5 Mobile function instruction

▶ This watch provides kinds of convenient ways of phone calls

- ▶ If you want to call someone, please select the "Phone" on the main interface.
- ▶ Dial phone No. by the 12 buttons

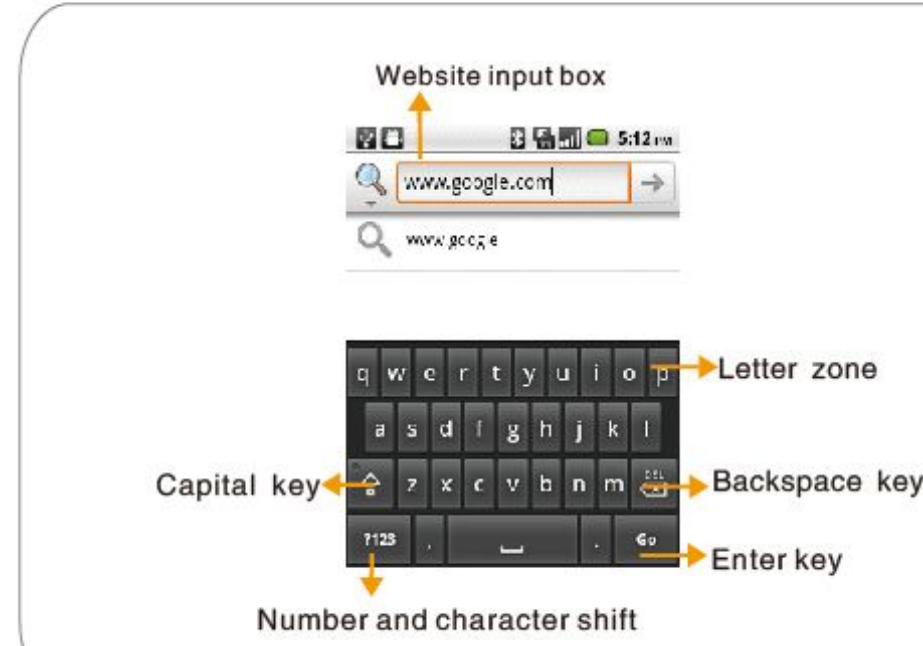
▶ Answer/reject call

- ▶ When someone calls you, the screen will display the caller's name, phone no. and picture. If the phone no. is not saved in the phone book, the screen only displays phone no. and default picture.



6 Input text (1)

- ▶ The keyboard will automatically appear when you need input word or starts some procedure.



7 Input text (2)

- ▶ **Modify the keyboard configuration**
- ▶ According to the default set, the traditional keyboard will appear when you need enter text.
- ▶ Press "Settings" on the main interface to set language and keyboard



- ▶ Choose "Language" and "Google Pinyin"

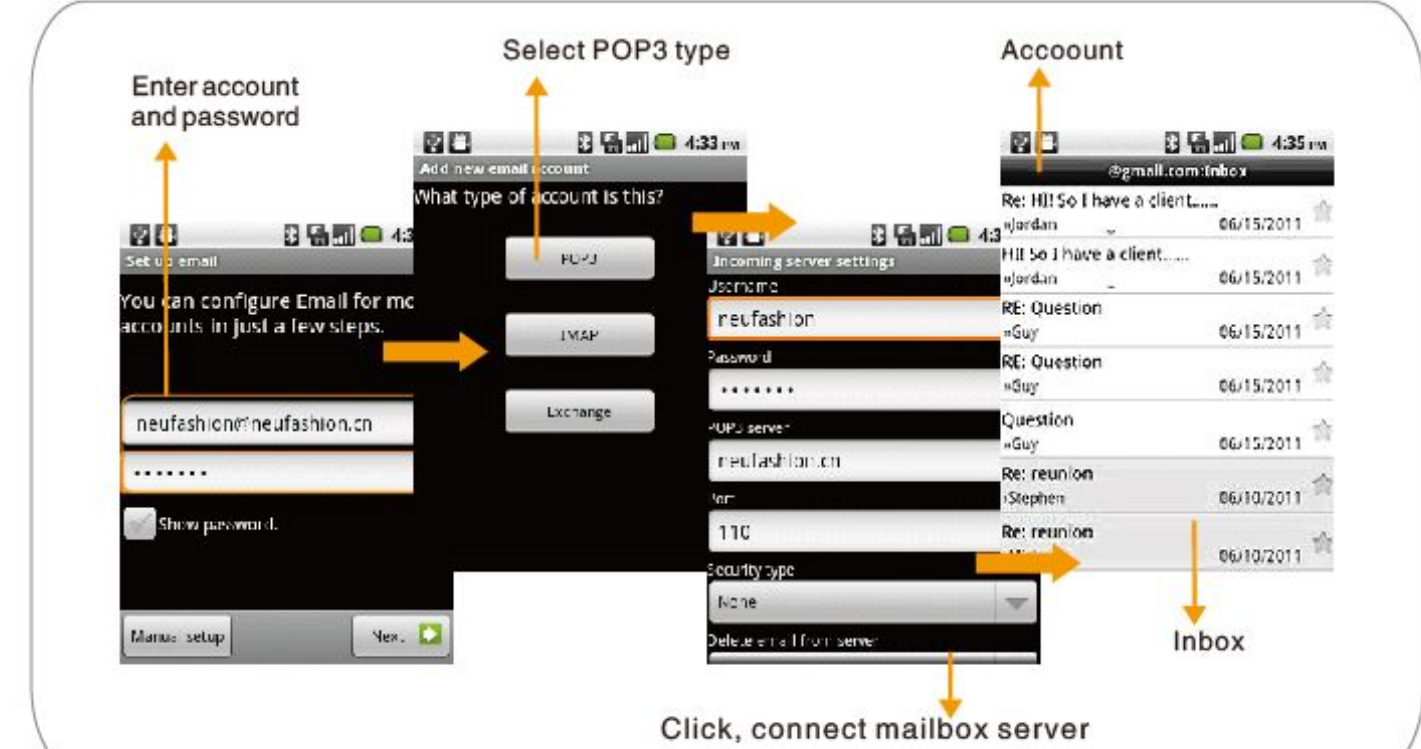
8 Send SMS, MMS

- ▶ The maximum character for text is 140, if exceed, the message will be divided to sent out.



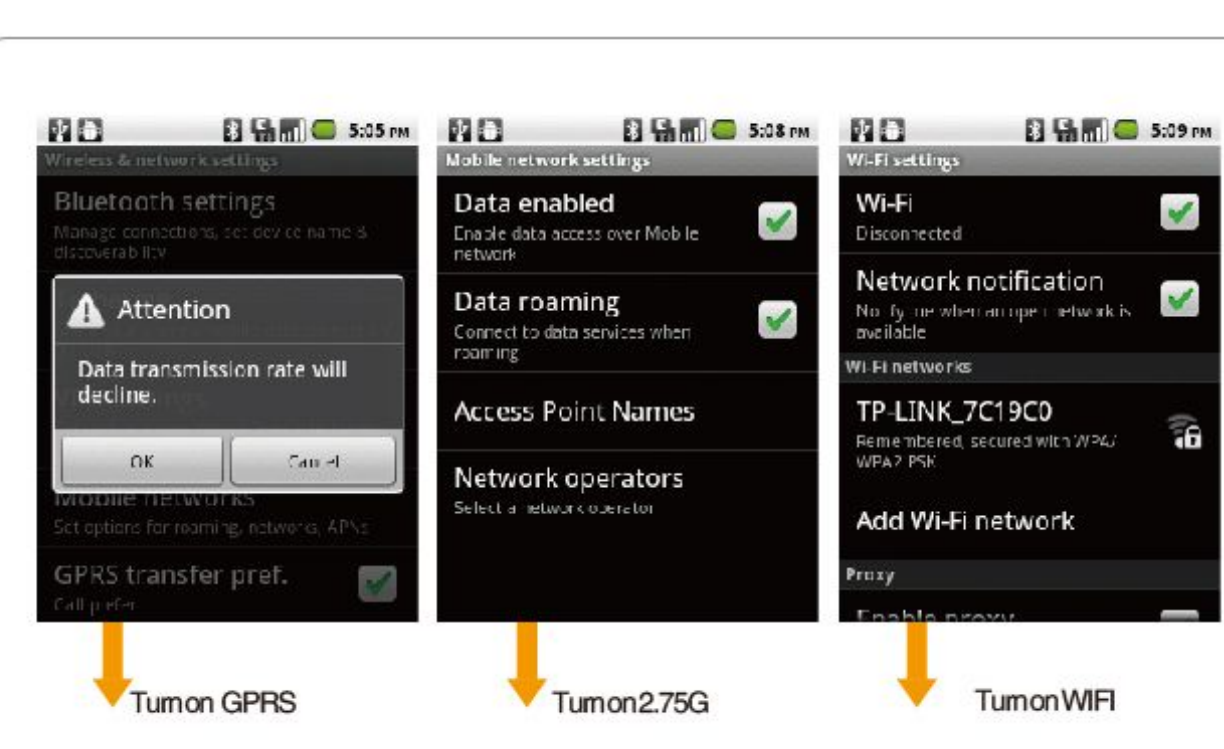
9 Email

- ▶ The mail application supports email account of POP3 or IMAP. The email can be received when the account is successfully added.



10 Data transmission

- ▶ This watch phone supports GPRS- 2.75G and WIFI
- ▶ **Main interface-->Settings-->Wireless & Networks**



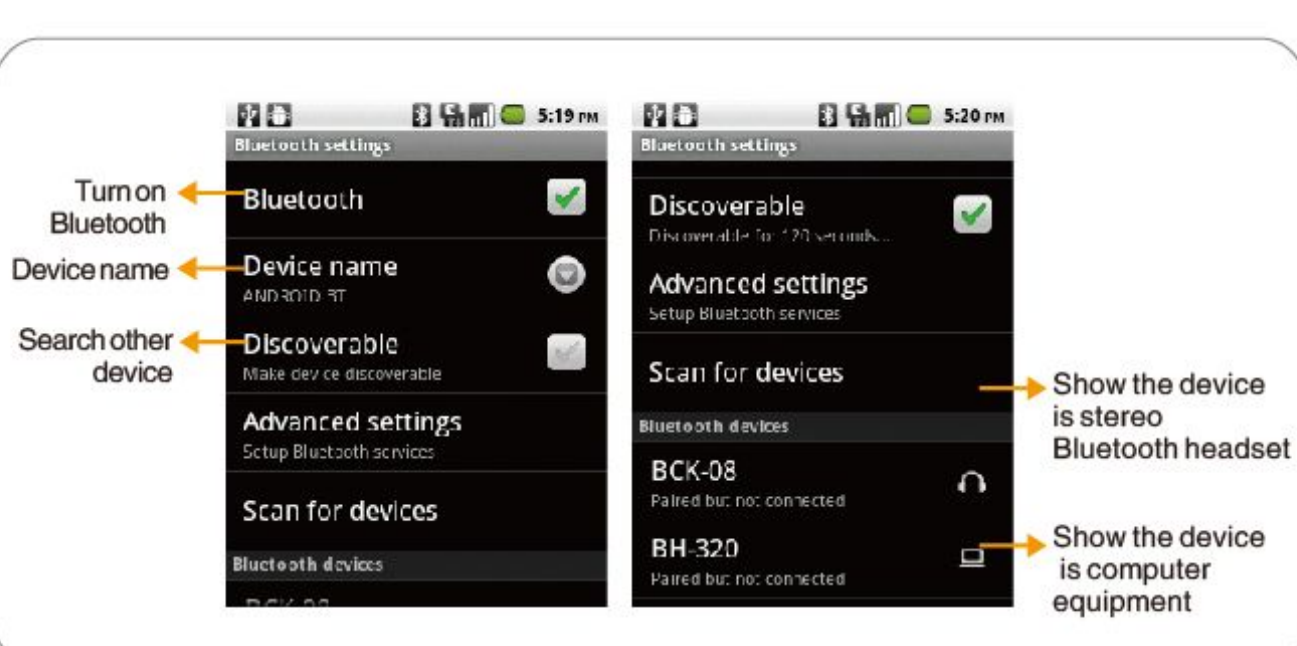
11 Browser

- ▶ When the internet is available, you can view website by browser.



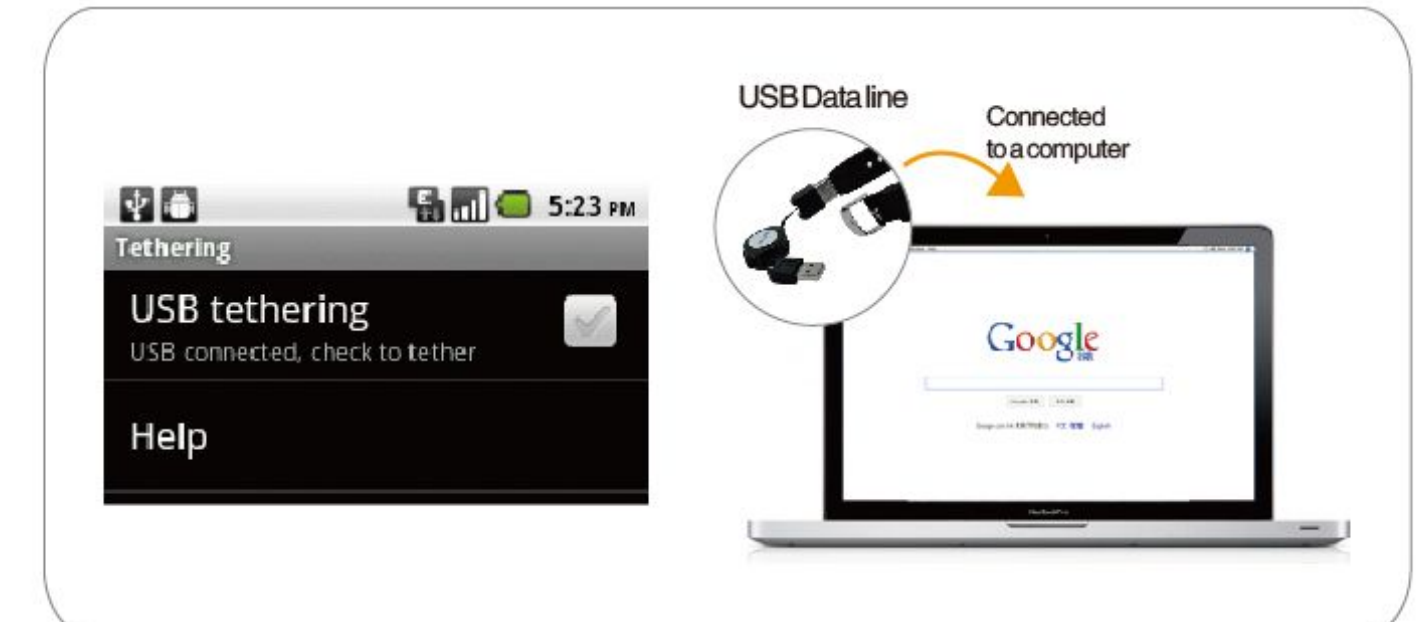
12 Bluetooth use

- ▶ Within the range of 10m, the wireless Bluetooth can make the watch and other Bluetooth device transfer data without cable.
- ▶ **Main interface-->Settings-->Wireless & Networks**



13 Use Z1 as a data storage

- ▶ In the place without internet service, you can share Z1's mobile data via USB.
- ▶ **Main interface-->Settings-->Wireless & networks-->Tethering**



14 Camera

- ▶ Using camera or video camera to take picture or video, and then share with your friends.

Android watch phone has 2.0 megapixel autofocus color camera, it can take high definition picture and video.



15 Music

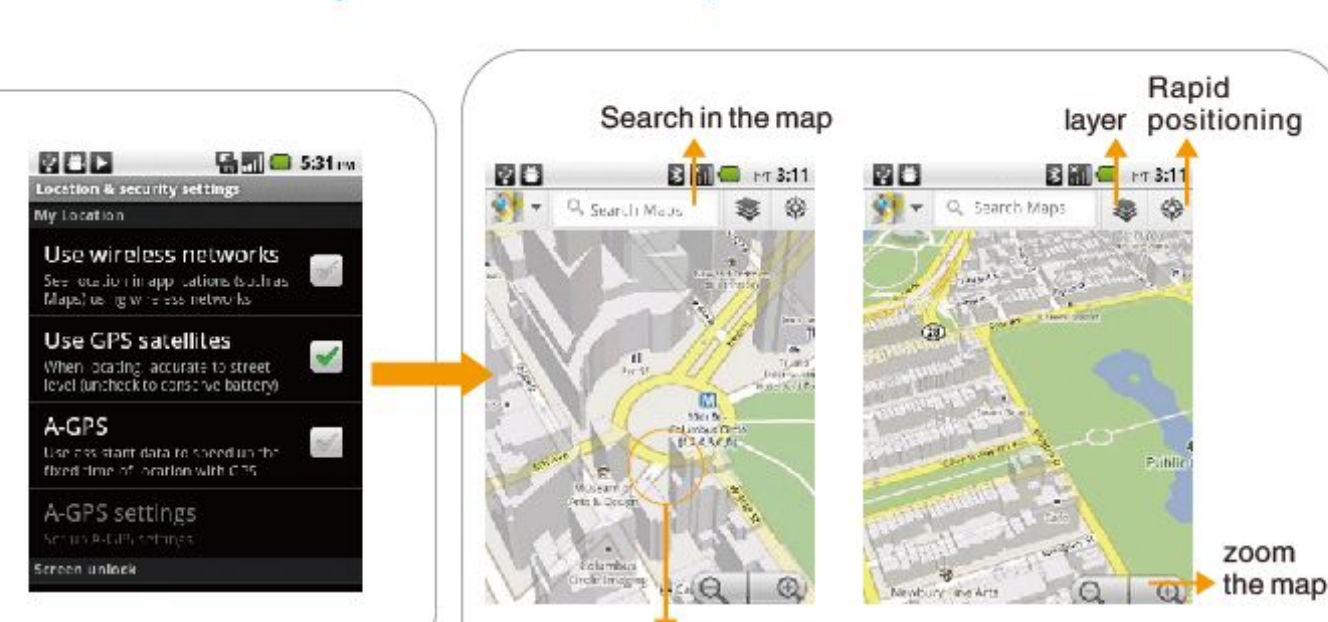
- ▶ Turn on the music application, play music



- ▶ **Remarks** Since it can only play songs saved on memory card, so please copy your songs to the memory card, then turn on the player.

16 GPS Location System and Google Map

- ▶ Start GPS Location System
- ▶ **Main interface-->Settings-->Location & security-->Use GPS satellites**



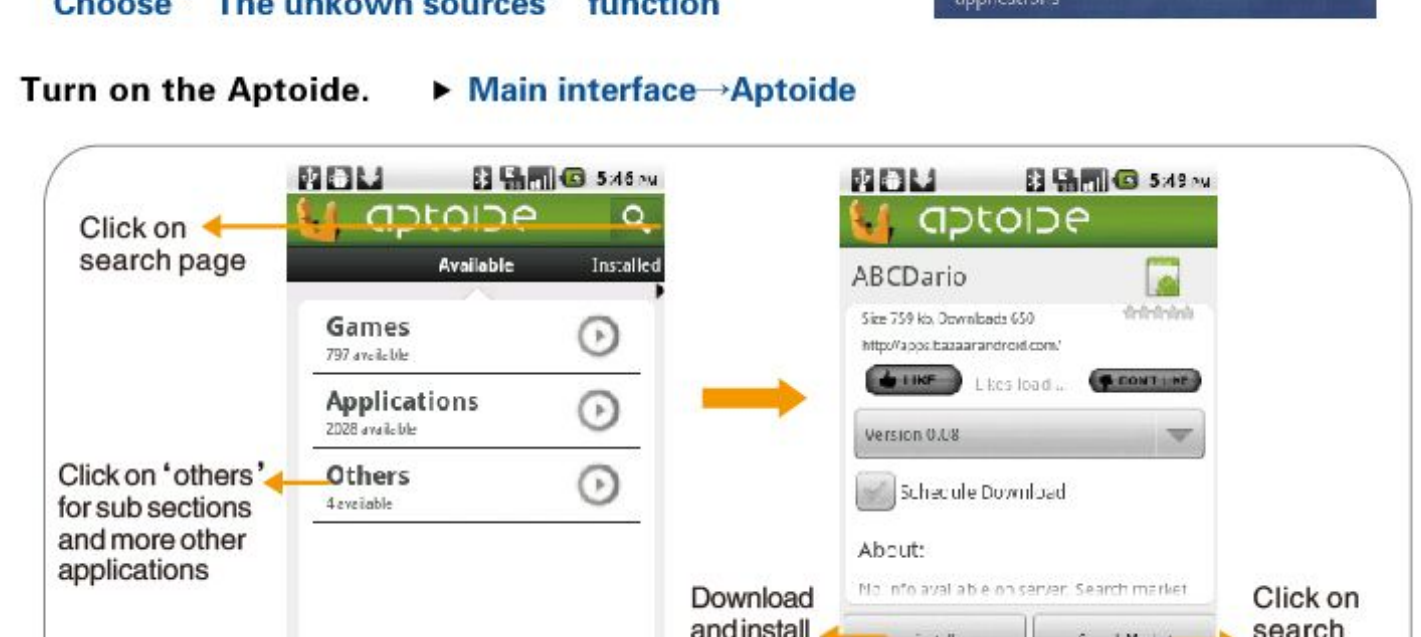
- ▶ Enter into the Google map, system will automatic posting. And your place will be showing by flashing blue spot in the map.

17 Aptoid

- ▶ Aptoid provides many useful Apps and interesting games, which you can download and install in the device.
- ▶ You need configure the system when first time use Aptoid.

- ▶ **Main interface-->Settings-->Application-->Choose 'The unknown sources' function**

- ▶ **Turn on the Aptoid.** ▶ **Main interface-->Aptoid**



18 Install Apps in SD card

- ▶ Download Apps in google play store: <https://play.google.com/store>
- ▶ Download Apps in the third party web site
- ▶ The downloaded software will be installed in SD card

