

User's Manual

WIFI DISPLAY LED

DLP PICO PROJECTOR



DLP PICO PROJECTOR

TABLE OF CONTENTS

Safety Information	2
FCC Information	3
What's in the Box	3
Introduction	4
Location of Parts and Controls	4
Operation	5 - 10
Charging the Projector	5
Operation	5
Wireless Miracast Connection for Android Phone & Tablets	6
Wireless DLNA Connection	6
Stream Internet Media using DLNA	7
Airplay Projection for iPhones and iPad	7
Projector Wireless Settings	8
USB Playback	9
SD Card Playback	9
HDMI / MHL Input	10
Care and Maintenance	11
Troubleshooting	12
Product Specifications	12

Safety Information

Please read these instructions before using your Pico Projector. Failure to comply with these instructions could result in electric shock, fire, personal injury or damage to your Pico Projector.

Power Source

Check the power specification plate on the back of the Pico Projector. Ensure that your line voltage matches with the power adapter rating of the Pico Projector. **The Power Adapter accepts AC power 90-264V, 43-67 Hz.**

Power Adaptor

Use only the power adaptor supplied with the Pico Projector. Do not use the power adaptor if it has become damaged or frayed. For a replacement power adaptor, contact your authorized dealer. Do not allow anything to rest on the power adaptor. Do not place this projector where the adaptor may be abused by persons walking on it.

Overloading

Do not overload wall outlets and extension cords as this can result in the risk of fire or electric shock.

Liquid Spills

Do not set drinks or other liquids on top of the Pico Projector. Do not place the Pico Projector near water, for example, near a bath tub, wash bowl, kitchen, sink, or laundry tub, in a wet basement, or near a swimming pool. Spilled liquids can flow inside the Pico Projector and cause damage.

Repair

Do not disassemble the Pico Projector. Take it to an authorized technical staff when service or repair work is required.

Technical Service

Please refer servicing to authorized technical staff under the following conditions:

- When the power adaptor or plug is damaged or frayed.
- If liquid has been spilled into the Pico Projector.
- If the Pico Projector has been exposed to rain or water.
- If the Pico Projector does not operate normally by following the operating instructions.
- If the Pico Projector has been dropped or the cabinet has been damaged.
- If the Pico Projector exhibits a distinct change in performance.

Notes:

1. The appliance inlet of the power supply is the disconnecter from mains and must be anytime easily accessible.
2. The maximum noise level of the product is LPAE70dB (A) DIN 45635-19-01-KL2.

FCC Information

This equipment generates and uses the radio-frequency energy and, if not installed and used in accordance with the instruction manual, may cause interference to radio and television reception. It has been tested and found to comply with the limits for a class A computing device in accordance with the specifications in Subpart J of Part 15 of FCC Rules, which are designed to provide reasonable protection against such interference when operated in a commercial environment. If this equipment does cause interference to radio or television reception, the user may try to correct the interference by one or more of the following measures:

1. Re-orient the receiving antenna for the radio or television.
2. Relocate the equipment with respect to the receiver.
3. Plug the equipment into a different outlet so the equipment and receiver are on different branch circuits.
4. Fasten cables to ensure adequate electromagnetic interference controls.
5. Consult the dealer or an experienced radio/TV technician for help

Acknowledgments

The followings are registered trademark or trademarks of their respective corporations: Apple, Google, TI, Microsoft etc.

What's in the Box

Handle your WIFI LED DLP Pico Projector carefully as you remove it from the packing box. The following items should be included in your package:

- Pico Projector
- Micro USB to HDMI/MHL cable
- AC Power Adapter 5V 2A
- Micro USB to USB Charging Cable
- User's Manual

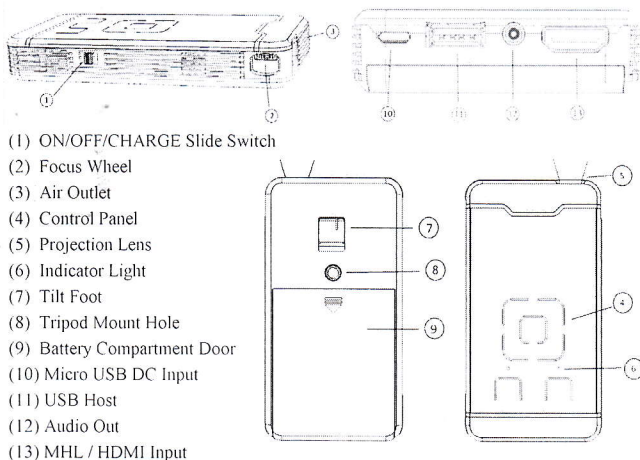
INTRODUCTION

The Wireless DLP Pico Projector is a convenient, versatile, state-of-the-art presentation system for most modern Smartphones and a valuable tool for projecting computer-generated video information. This, coupled with the rechargeable battery, allows easy presentations on the fly. The Pico Projector is an ideal companion for travelling executives, sales personnel and anyone who wants to do presentations and entertainment on the spot. Photos and videos can easily be shared in group meetings or parties.

The following lists some of the specific features of the DLP Pico Projector:-

- Small & Simple to Operate
- Built-in WiFi for Wireless Projection from Smartphones and Tablets
- WVA 854x480 DLP Imager
- Battery Operated
- 2000 : 1 High Contrast Ratio
- USB Port : Standard USB A Host for USB Flash Drives
- Micro SD Card Support
- Built-in Speaker
- Digital AV Connections : HDMI, MHL input

LOCATION OF PARTS AND CONTROLS

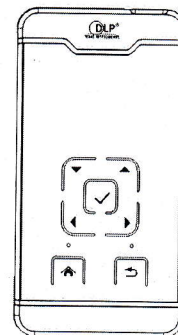


Control Panel

- ▲ UP
- ▼ DOWN
- ◀ LEFT
- ▶ RIGHT
- ✓ SELECT
- ↶ BACK TO PREVIOUS SCREEN
- ⬇ HOME / SETTINGS

HOME : Long press of this button takes the display back to the opening screen.

A momentary press displays the SETTINGS screen.



OPERATION

Charging the Projector

It is recommended to fully charge the projector before using. Connect the micro USB end of the USB cable to the projector (DC input) and the USB end of the cable to the AC power adapter. Once connected, the battery indicator light will illuminate red. When projector is OFF, the charge time is approx. 4hours. When projector is ON the charge time is approx. 10 hours.

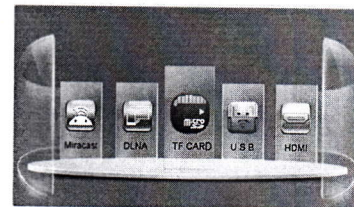
Operating the Pico Projector

Slide and hold the ON/OFF switch towards the rear for about 2 seconds then release, power On indicator light will immediately turns red. After a short while the display shows the HOME screen. Simply roll the focus wheel control forwards and backwards to fine-tune the sharpness of the projected image. Choose the media you would like to view from the Home screen by using the Left and Right button.

Note:

1. Sliding the ON/OFF/CHARGE Switch to the CHARGE position will enable the Pico Projector to act as POWER BANK supplying 5V charge current from the USB port to other devices.

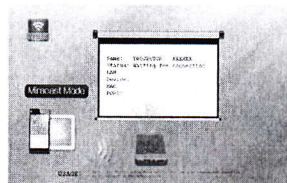
2. Momentary slide of the ON/OFF/CHARGE Switch to the ON position and quick release will toggle the projector between BRIGHT and ECO display mode. In ECO mode the image is not as bright but the battery operating time will be longer.



Home Screen

Wireless Miracast Connection for Android Phone and Tablets

- (1) On the Home screen, select the Miracast option by using the left and right button then press tick to select



- (2) On your mobile device open the Miracast/ Wireless display function. Wait for PROJECTOR-XXXXXX to come up on your mobile device then connect. Once connection is made the projected image mirrors your mobile device.

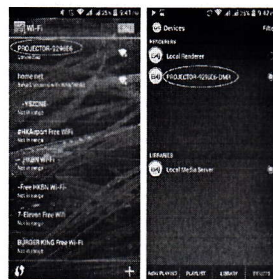


Note:

1. The Android Phone or Tablet should have Operating System of 4.2 and later.
2. For best performance, avoid obstacles between the projector and the Phone and that the distance between the phone and the projector is less than 5 m.
3. Performance may deteriorate in operating area where there are many different WiFi routers working at the same time. In this case, try to use wired connection instead.

Wireless DLNA Connection

- (1) On your mobile device open WIFI then connect to PROJECTOR-XXXXXX
- (2) On your mobile device select a network media player, such as Bubbleupnp
- (3) In the media player, select playback device (PROJECTOR-XXXXXX)
- (4) Play media file



Note:

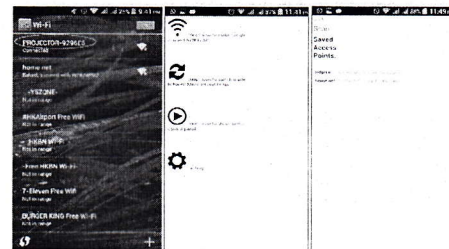
You may be prompted to enter Password to proceed. The default password is 12345678.

AIRPLAY PROJECTION for iPhones and iPad

- (1) On the HOME screen select the DLNA option.
- (2) Connect your iPhone/iPad/iPod to the projector by WiFi (SSID PROJECTOR-XXXXXX)
- (3) On your iPhone/iPad/iPod open Airplay Mirroring/DLNA function

Stream Internet Media using DLNA

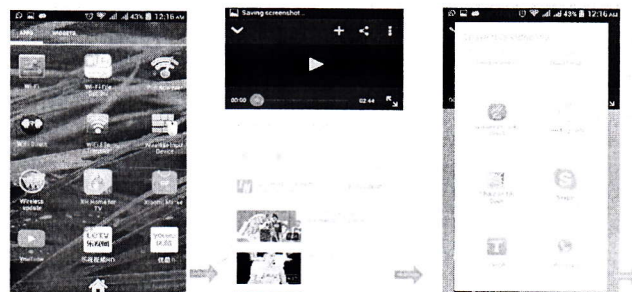
- (1) On the HOME screen select the DLNA option.
- (2) Open WiFi on your smart device then connect to PROJECTOR-XXXXXX
- (3) On your smart device open the browser application then type in the IP address <http://192.168.49.1> to show projector settings on your smart device.

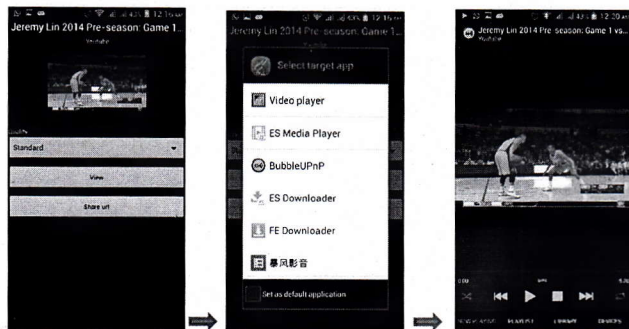


- (4) Select
- (5) Select Scan to show available networks
- (6) Select preferred network then connect

- (7) On your smartdevice, open network media player application or if not readily available download a video player from PLAYSTORE with online streaming capability.

For example : to stream Youtube videos you will need to download and install SemperVidLinks and a network media player (egBubbleUPNP)app from PLAYSTORE. Open Youtube app and select a video to stream to the projector. On the Youtube player activate the share icon then share video via SemperVidLinks then playback video via BubbleUPNP InBubbleUPNP, the playback device must be set to PROJECTOR-XXXXXX





Projector Wireless Settings

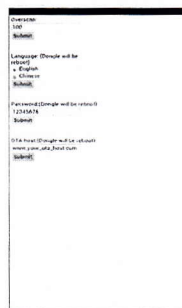
- (1) Connect your mobile device to the projector by WiFi screen (A)
- (2) Open the browser on your mobile device then type in <http://192.168.49.1> web address to display screen (B)
- (3) To change Projector password, select Password in screen (C). Delete old password then enter new password
- (4) To connect Projector to local network, select on your mobile device. Scan for network then connect. This allows your mobile device to connect to the local network via your projector



Screen (A)



Screen (B)



Screen (C)

USB Playback

Insert USB flash drive to the USB Host port. At the HOME screen, select the USB option and in subsequent screens select the media type and file using the UP/DOWN controls. For playback controls press the button during playback of media file. Use and to select options.



PHOTO
MUSIC
MOVIE
TEXT



USB 2.0

MOVIE



SDCARD Playback

Insert SDCARD in to the SDCARD slot. At the HOME screen, select the SDCARD option and in subsequent screens select the media type and file. Media playback controls are same as USB playback.

PHOTO
MUSIC
MOVIE
TEXT



TF Card

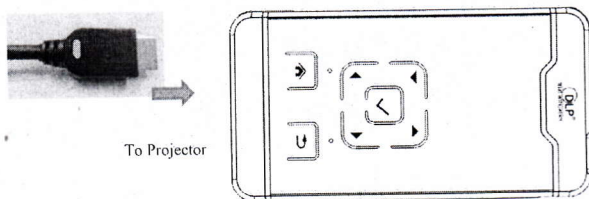
MOVIE



HDMI/MHL Input

HDMI

Plug a standard HDMI cable into the HDMI port of the Projector and to the signal source on the other end.



On the opening screen select the HDMI option, the projector automatically displays image from HDMI input.

MHL

Plug HDMI end of the supplied MHL cable to projector and the micro USB to smart device with MHL support. On the HOME screen select HDMI and the projector display replicates the smart device screen.

For Samsung devices (S3, S4, etc), please use an optional 5pin to 11pin MHL adapter.

Care and Maintenance

The information in this chapter describes how to care for and prevent accidental damage to your Pico Projector. You should treat your Pico Projector with the same care you would give any other valuable equipment.

Cleaning the Pico Projector Housing

DO NOT try to service the Pico Projector. Refer all Pico Projector servicing to your dealer. Failure to do so can result in serious personnel injury or damage to the Pico Projector.

DO NOT clean the housing with organic solvents, such as those containing acetone. Wipe the exterior of the housing with a soft, damp cloth. Protect the Pico Projector from rain, snow or extreme temperature.

Cleaning the Projection Lens

To clean the projection lens:

Use a cotton-bud stick to gently wipe dust or oil from the projection lens surface. Also, do not use abrasive cleaners, solvents, or other harsh chemicals that might scratch the lens.

Transporting the Pico Projector

The DLP Pico Projector is a highly sophisticated piece of electronic equipment that is sensitive to impact, excessive heat, cold and humidity. When transporting the Pico Projector, use a protective bag or use the original packing carton to minimize shock and impact.

Store and transport the Pico Projector at temperature between 0 and 140 degrees Fahrenheit (-17 to 60 degrees Centigrade). Avoid storage in automobiles during seasonal temperature extremes. Automobile interior temperatures can exceed 160 degree Fahrenheit (70 degrees Centigrade) in summer. If the Pico Projector has been exposed to extremely hot, cold or humid conditions, allow it to stand at room temperature for 30 minutes before use. Extended use of the Pico Projector in high temperature environments may cause a reduction in brightness of the projected image.

Troubleshooting

If you are having a problem operating the Pico Projector, first make sure you have set it up according to the instructions under the section "Operation". You should also check the adjustments and the INPUT connections. Verify that all power is switched on. Before calling for service, check the troubleshooting suggestions in this chapter.

Problem

Solutions

Image becomes yellow and dim Battery remaining power too low

Wireless Video streaming is not smooth There may be too many WiFi user at your location
Try at another spot or use wired connection.

Product Specifications

Display Type	TI DLP Technology
Light Source	RGB LED
Resolution	WVGA 854 x 480
Contrast	2500 : 1
I/O Connectors	HDMI / MHL, USB, Micro SD Card
Output	Audio out 3.5mm stereo plug
Control	Built-In Keypad
Audio	1W Mono Speaker
Power consumption	Approx. 7W
Power source	Rechargeable Li battery 7.4WH ; 5V AC/DC adapter