

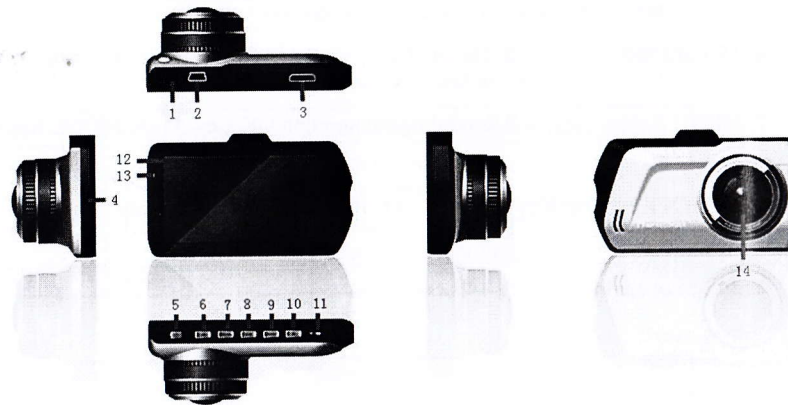
Contents

Characteristics of Product.....	2
Structures of Product.....	3
Interface Structure&Function Introduction.....	4
Operation Instruction.....	6
Preparations before usage.....	6
Power on/off machine.....	6
Battey charging.....	6
Installation and Taking-out of Memory Card.....	7
Basic operations.....	8
Interface	19
Mini USB port.....	19
AV port.....	21
HDMI port.....	22
Parameters of Product.....	23

Characteristics of Product

This digital driving recorder is a kind of new technological product with multi-function of HD recording, photograph , safety driving system and with micro SD card as storage device. It adopts video encoding and decoding of high performance and high compression ratio and support HDMI interface , which can transfer high-quality video. This car camcorder can be widely used in daily life, travel ,outdoor activity and there is safety guarantee for using of customer.

Structures of Product



Interface Structure&Function Introduction

1. AV-OUT Port
- 2.USB Port 5V
- 3.HDMI Output
4. TF Card Slot
5. On and Off
6. UP Key/One Key to Lock
7. MENU Key
- 8.Recording/Photograph/OK Key
9. MODE Key
- 10.DOWN Key/ One-Key Mute
11. Reset
12. Screen
- 13.Indicator Light
- 14.Lens

Function of Keys

Name	Function
On and Off Key	1.Short press to power on and long press again to power off
Recording/Photograph/OK Key	Used for recording , photograph and to confirm
MENU Key	Used for entering into condition of function table setting
UP Key/One Key to Lock	1.Used for select Up item in Menu 2. Short press to lock when recording
DOWN Key/ One-Key Mute	1.Used for select Down item in Menu 2. Short press to be mute when recording
Reset	Reset Key

Indicators

Name	Instruction
Indicators	Blue indicator flashes continuously when recording, and stop flashing when stop recording.

Operating Instruction

Preparations Before Usage

■Power On/Off

- 1.Short press to power on and long press again to power off
- 2.The Car DVR can power on and start recording automatically when connected with car charger; After disconnected with car charger, if the machine is with battery, it will stock video file automatically when power off .

■Battery Charging

The second way to charge the battery

- 1.Use USB cable to connect the machine with the computer.
2. Use the random accessory car charger to charge.

When charging, LCD screen will show charging icon, the red indicator will keep flashing , when finish charging, the red indicator will stop flashing.

■Installing and Taking-out of Storage Card

- 1.When installing the Micro SD card ,insert the Micro SD card into the slot in line with the indication direction.
- 2.When removing the card, gently press the Micro SD card, and take it out when it pops out.



Warm Tips :

Please stop recording before taking-out Micro SD card to avoid damaging the file.

When in state of power on, the machine will power off automatically after taking-out Micro SD card

Basic Operation

This Car DVR has three modes:

Camera Mode: To record video

Photographing Mode: To take photos

Play Mode: To play the video and view the photos

Menu Mode: To set the menu

Press MODE Key to switch the mode. The default mode is recording mode when power on.

Press MENU Key to enter context menu mode. Press the Up and Down key to choose the mode, then press "OK" key to affirm.

■Camera Mode :

When in recording mode, press the Recording Key to start recording and press again to stop recording.

■Photographing Mode

When in photographing mode, press "OK" key to take photos.

■Play Mode

1. Press MODE Key to choose play mode. Press Up or Down key to select file item in Menu.

2. Video play: Press "OK" key for playing or pause when press again.

3. On Play Mode, press the MENU Key to enter Play menu content , and press again to exit the menu content.

Play Mode Setting Options:

Delete: Delete the present one ; Delete all

Protection: Lock the present file; Stop locking the present file ;Lock the all files ;Stop locking all files.

■ Menu Mode

Press the MODE key to enter the play mode; Press the up or down key to modify the contents for the context.

1. Video Resolution : 1080FHD 1920*1080 /720P 1280*720 /VGA 640*480
2. Motion Detection: Off/5 seconds/10 seconds/30 seconds
3. G-sensor: Off/High/Medium(Default)/Low
4. Screen protection: Off(default)/ 30 seconds/1 minute/2 minutes
5. Date/Time:YY/MM/DD (default) MM/DD/YY DD/MM/YY
6. Set language: English, Simplified Chinese(default), Traditional Chinese
7. LDWS (lane departure warning system): On/Off(default) ; LDWS setting:
Cancel/Confirm
8. FCWS (Forward Collision Warning System) : Off(default)/On
9. Loop recording: Off/1 minute/3 minutes(default)/5 minutes

10. Key sound: Off/On(default)

11. Automatic power off: Off(default)/ 1 minute/3 minutes/5 minutes

12. Light Frequency: 50HZ(default)/60HZ

13. Set license plate number set: On/Off(default), numbers: 01-10

13. Formatting: To delete data of Micro SD Card

15. Default set: Used for setting system parameter as preset value of factory-fresh.

16. Version: Used to check the version number for the recorder.

■ LDWS (Lane Departure Warning System) Instructions

1. Turn on LDWS

When in PREVIEW Mode, press MENU Key to choose LDWS On/Off . If turn on LDWS, the LCD screen shows the function of LDWS.

2. LDWS Setting

When in PREVIEW Mode, press MENU Key to enter into LDWS setting options. Press confirm to use function of LDWS and press cancel to stop the function of LDWS.

If press confirm , the screen will show the picture as below:



Please adjust the Car DVR position according to the following requirements:

1. Please put the Car DVR in the upper of windscreen, close to rear view mirror .
2. The upper red line should be complied with horizon line.
3. The green line in the both sides should be overlapped with the lane.
4. The green line in the middle should complied with the middle of the lane.
5. The below red line should be above of the bonnet.
6. After the upper red line complied with horizon line, if the below red line covers the bonnet , please put the Car DVR into a higher position.
7. After adjustment , press the MENU Key to enter into the PREVIEW Mode.

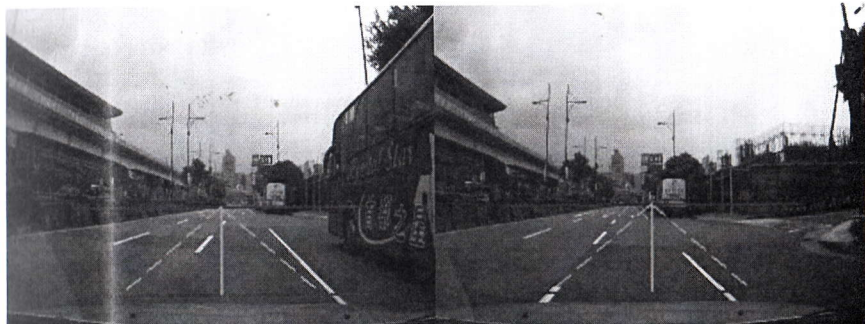
Examples:



Picture 1 Correct



Picture 2 Correct



Picture 3 Wrong



Picture 4 Wrong



Picture 5 Wrong

Picture 6 Wrong

3. Warm tips for LDWS

- (1) If in the scene of sunshine and no obstruction , the detection effect will be better.
- (2) When the car DVR in the right position , if the car close to the white line in the both sides of the lane, the car DVR will have alarm reminding.
- (3) The practical alarm reminding effect will depend on the car DVR position , the shooting angle and the lane condition.
- (4) In the scene of rainy day, night, snowy day etc, which can effect the detection of LDWS , the alarm reminding effect will not be good .

■ FCWS (Forward Collision Warning System) Instructions

1. In the PREVIEW mode, press MENU Key, choose FCWS to turn on or off the FCWS function..

2.FCWS Setting

When in PREVIEW Mode, press MENU Key to enter into FCWS setting options. Press confirm to use function of FCWS and press cancel to stop the function of FCWS.

3.Warm tips for FCWS

(1).If in the scene of sunshine and no obstruction , the detection effect will be better.

(2)When the car DVR in the right position , if the car close to the front car with the distance of two car, the car DVR will have alarm reminding.

(3) After the alarm continues for 3 seconds, when the car close again to the front car, the alarm will start again , only the front car is far away or the car stop driving , the alarm can stop.

(4) The practical alarm distance depends on the car DVR position , the shooting angle and the lane condition.. For example, if the upper red line higher than the horizon line, the alarm distance will be longer.

(5)In the scene of rainy day, night, snowy day etc, which can effect the detection of LDWS , the alarm reminding effect will not be good .

Interface

1. Mini USB Port

After connect the Mini USB cable with the computer and power on the Car DVR, the USB menu will show on the LCD screen. There are three modes for options:

(1)Memory storage

In this mode, the video or the image file can be transferred between the computer with the Car DVR

(2)Camera

Choose this mode to activate USB video device ,can be used as PCCAM.

(3)Charging

This mode means the the machine is being charged.



Warm Tips :

If the USB device or the camera function can not normally used after connected with the computer, please uninstall the USB Storage Device first and install it again

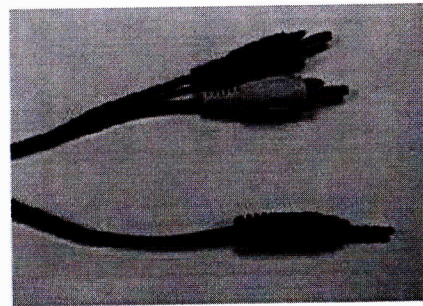
Detailed operation:

Click “My Computer” on the computer table ,and click “ Device Management”to choose the USB Storage Device. Uninstall it first and install it again .

2. AV Port

This Car DVR support AV Port, which can transfer the video into DVD Player, Computer, TV etc.

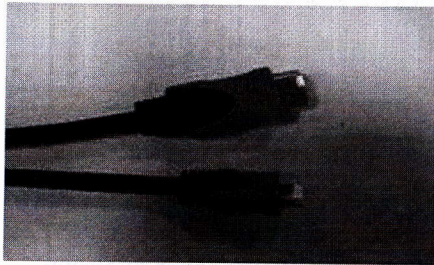
Use the AV connecting wire to connect the TV with the Car DVR , and the video file can be directly output to TV.



3. HDMI Port

This Car DVR support HDMI Output , which can transfer the video into DVD Player, Computer, TV etc.

Use the HDMI connecting wire to connect the TV with the Car DVR , and the video file can be directly output to TV.



Parameters of Product

Chipset	AU3522
Platform	AU3522+HD1080 sensor PS1210K
Memory	DDR 256Mbit
Video Resolution	1080FHD 1920*1080 720P 1280*720 VGA 640*480
Format	Image: JPEG
	Video : H.264 MOV
Color Effect	Standard
Seamless recording	Support
File recover	Support
Year/Month/DAY/ Hour/Minute	Support
Memory	SD Card (minimum4GB, max 32GB, class 6 or higher)

Language	English,Simplified Chinese,Traditional Chinese
HDMI	Support
Video Output	PAL
USB function	1.Memory storage 2.Camera 3.Charging