



mini PC

for Android™

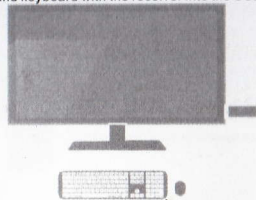
A. Appearance Introduction and Connect the TV



HDMI	T-Flash	Power Light
Charging Port	Mini USB	USB Host
Updating Button	Power Button	

2. Connect the TV

The device supports TV power supply directly with it into the HDMI port of TV. Users could also connect the HDMI cable between the device and TV, with the charger in accessories to support power supply. The following picture shows that the device gets power supply directly from TV, and it supports the wireless mouse and keyboard with the receiver into the USB port of the device.



- (1) HDMI: AV out;
- (2) T-Flash: Could be expended by T-FLASH memory;
- (4) Charging port: Used to connect the power;
- (5) Mini USB: For data transfer with computer. Reinstall the OS. It could be converted to standard USB2.0 port by converter;
- (6) USB Host: For pen drive, mouse, keyboard, External HDD, 3G dongle, could be expended by USB Hub;
- (7) Updating Button: For system upgrade;
- (8) Power button: Connected to the power supply, the device automatically boot, press the power button for five seconds to shut down, can also be shut down by the system;

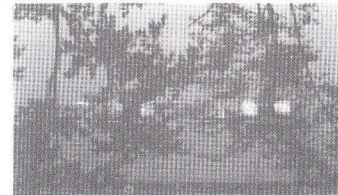
B. Initial operation

1. Connection instruction for Hardware

- Connect the TV set or LCD monitor by product or HDMI cable. Set up the TV data receive mode to HDMI port. (Refer to TV set user manual)
- Suggest using 2.4G wireless mouse and keyboard. Plug 2.4G receiver on USB Host connector. Or Plug on USB OTG port by port converter. If only mouse plugged, the device will provide soft keyboard in operation system. If the device detected the physical keyboard, the soft keyboard will be hiding by OS automatically.
- Mouse left button for "OK", right button for "return", rolling for page up and down. Hold left button to pull icon or copy & paste file. Hold middle button for Properties.

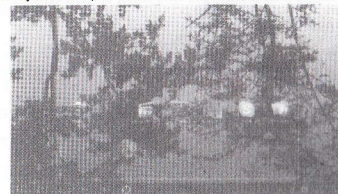
2. OS interface

Connect power supply and devices, the booting information will show up within 1 min.



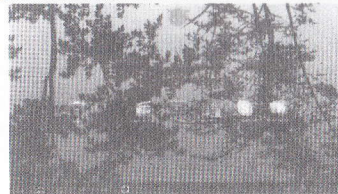
3. Management Software Icon

Hold any icon and pull it could move it to any position you like.



4. Delete Icon

Hold the icon and throw it into the red mark "x", it will be removed.



5. Drag to the desktop

Hold the arrow on any blanket space of the desktop, move it to left or right could move to next desktop. Rolling the mouse is same operation;



6. Return, Homepage, program, volume decrease, volume increase, off button.



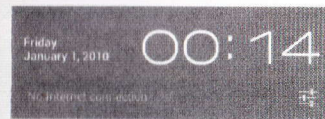
- Return button: click to return to the upper level directory;
- Homepage button: Click it anytime to return to homepage;
- Program button: Click to check the entire running program;
- Volume decrease: Click to decrease the volume;
- Volume increase: Click to increase the volume;
- Off button: Click to shut down the device;


7. Status bar

The right bottom corner is status bar; It shows the status of T-Flash card, USB connection, Time, Wi-Fi and Download...and so on.



Click status bar, the hide menu will bound up.



Click this icon , it will be show up more options.




8. Program Tool button

It shows up right top corner of desktop.




C. Program, Tools icon management

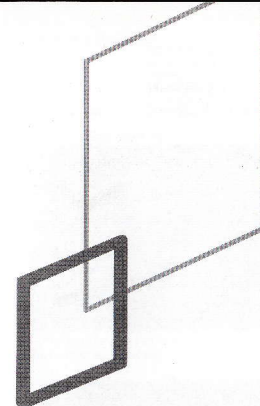
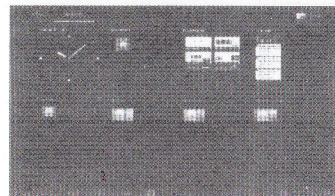
Click  to show up all the installed program and setup tools icon.



- If the first desktop page files with icon, then pull or rolling mouse will move it to second desktop page.
- You could launch these programs or set up directly, or hold this icon and throw them to desktop to make shortcut.



- Click it , then hold any button to make shortcut on desktop.



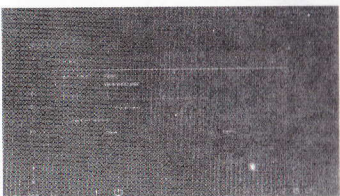
D. Setting



It is in Tool bar. Click to show it up.



f. Wi-Fi setting



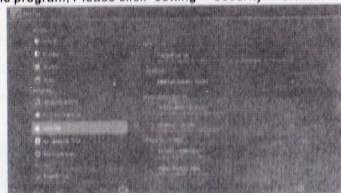
2. USB to Rj45 LAN adapter setting

If there is no Wi-Fi and have to use cable to access internet. Please buy USB 2.0 Adapter. And plug it on USB Host or OTG ports. Connect Rj45 LAN Cable ;click "setting"->"More"->"Ethernet"-tick"Use Ethernet"


E. Install/delete program

1. Set up "Unknown sources"

Please install Google market program as priority. If have to install Google un-define program, Please click "setting"->"security"->"Unknownsources".

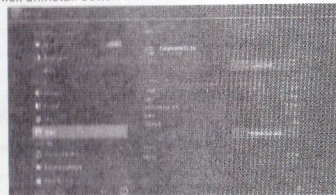


2. Install APK(Program)

Please download different application software from APK. After program downloaded,just click it to install You could also install Android program from other storage device.(Downloaded program will show up on status bar. Please click  to find downloaded software package. Then Click to install.

3. Delete APK(Program)

- Click "setting"->"Apps", it will show up all the installed program list.
- Click "Uninstall" icon need to delete.
- Click uninstall button will be ok.



F. Picture,Video,Filing management,Webpage

1. Set up media file searching function.

The device has the media searching function, but running this function will slow down the system speed. Setting SD card and USB device searching function, please referring to flowing picture;



2. How to play High definition media player

Click below icon, the tool will display Video and Audio file as category;

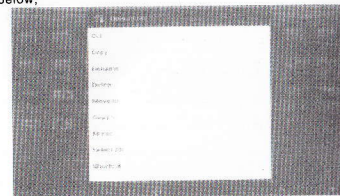


3. File management: Copy,Cut,Delete,Rename

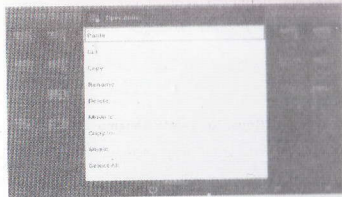
The device has strong function for filing. Classification of manage document in Storage, SD Card and External HDD. Please click "ES File Explorer"



After running file manage tool, click or hold object file or folder, it will display menu as below;



Please select "Copy", "Cut" from the menu. Then select another folder, click and hold the folder, then select the "Paste" can be completed; You can also select "Move to" or "Copy to", then select the corresponding folder can be completed;



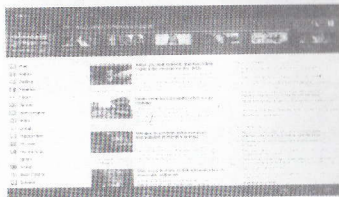
4. Music Player



Click "Music"

5. Visit the website

Please set up Wi-Fi to access to internet. There is Android default browser Or other browser is also available to download. Click "Setting"- 'browser'

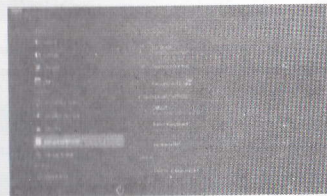


Android display all the web pages label on the top of browser. Click "+" to add new page. Click "x" to close page.

G. Language and Input

1. Select language and usual input method

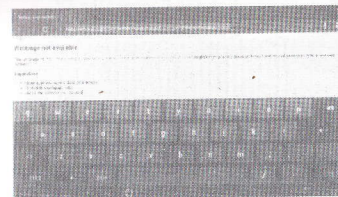
The devices are including 54 different languages. Please Click "Setting"- "Language and input"



Different area users please select the suitable input software according. And make some setting under this item.

2. Keyboard and Mouse

Device will show up the soft keyboard if it is only connected with mouse. And the soft keyboard will be hiding once the hardware keyboard is detected by the device.

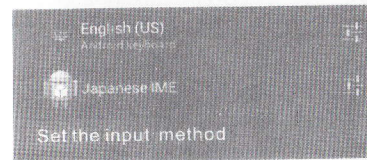


3. Switch input method

Please click below icon to select input method:



It will display all the options as below picture. Please select the suitable one.



H. Question & Answer

- Screen flicker or unstable working: please check if the HDMI cable has been connected tightly.
- Can not start device: please download OS file from official website to refresh the device OS. Make sure all the important data has been backup before process it. If the issue still can not be solved, please contact the distributor which you bought from.
- Keep restarting system automatically: Please check if the device get enough power supply. Sometimes, external HDD cause power shortage. Please plug additional power supply for external HDD or other external devices.
- Can not find file in SD card or pen drive: Please check all the connection of the device. And make sure you have tick the item of SD and USB Host in "Setting" Refer to "F.1".