

Quick Installation Guide

Download application software

Software name: myanycam
Software support: Iphone, Android phone and tablet

Mobile phone users

Open MYANYCAM application program after download and install, then use commonly used email to register the account and input the password. Enter into the application and add the camera successfully until the system confirm the account is registered successfully.
Note: Also can login www.myanycam.com to register the account.

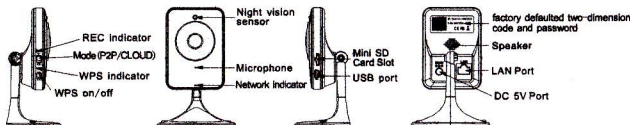
Computer users

Visit the official website: www.myanycam.com, then use the added camera account and view the video by IE browser directly.

Please remember the account name and password! Each account can add several cameras after it is registered successfully.

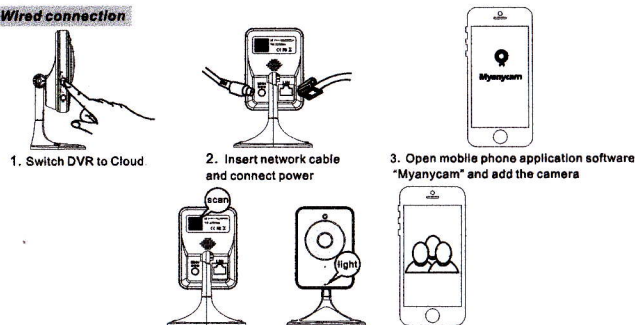
Note before using: All memory cards before inserting into the DVR need format on the computer, otherwise, it may make stored video broken or can't store the file.

Product Picture and Function



Operation

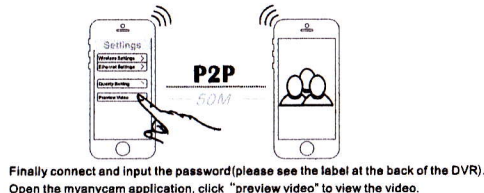
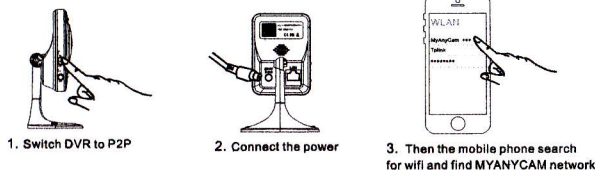
Wired connection



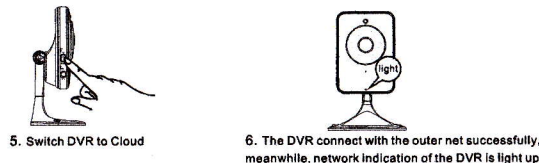
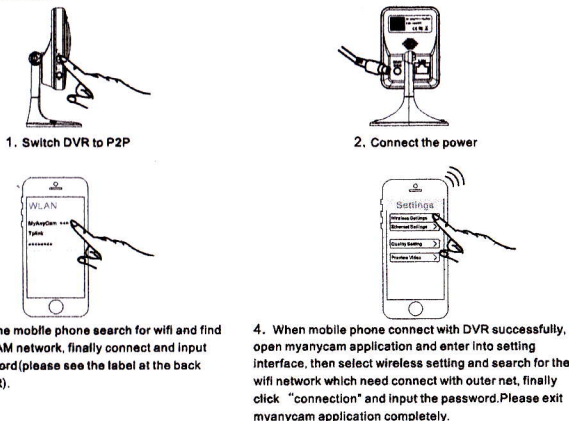
Solution: At the "Add" menu, click two-dimension code icon, use mobile phone scan the code and also can input the serial number and password manually, then name the camera to add successfully. View the video until network indication of the DVR is light up.

P2P connection

The connection don't need any network.. DVR can use with mobile phone at close range(within 50M).



Wifi connection



Also can use WPS which can adapt wifi password automatically, when adapt the password of the outer net according to the above description, press WPS button of DVR and router at the same time, then the two lights are flashing continuously and the password will adapt successfully until the flashing stops.

Search for DVR password: If forget the password, examine and change it according to the following steps:

- 1) Switch DVR to P2P and disconnect wired connection, then press on WPS button as soon as connect power (Note: the operation order must be correct) and loosen WPS until network indicator lights on.
- 2) After network indicator lights on, there is a "MyAnyCam_wps_***" on wifi searching of mobile phone. The network can connect directly without any password
- 3) Open "Myanycam" application software after connection, enter into "video preview" system setting "camera information", the information showed into the camera password is the DVR password which can be recorded and revised, it's ok that exit "Myanycam" after finish revising and cut off the power and restart DVR.

Pecification

1. Night vision: 6 IR LEDs
2. Image sensor: 720P 1/4" CMOS
3. Ethernet: 10/100 Base-T
4. Wireless connectivity: WiFi 802.11 b/g/n
WiFi direct support WPS
5. P2P: Use directly w/o network
6. Supported Protocol: HTTP, TCP/IP, SMTP, FTP, PPPoE, DHCP, DDNS, NTP
7. Video Resolution: 1280X720P
8. video Storage: 32G Micro SD card, Cycling recording
9. Voice: Two way conversation
10. Video Compression Format: H.264
11. Event Trigger Motion: Mail, mobile phone
12. Data Interface: USB 2.0
13. Power: DC 5V, 5W
14. Rotation Angle: Horizontal: 360° Vertical: 180°
15. Support: Apple Mac, Windows PC, Iphone, Ipad, ipod touch, Android phone or tablet, IE Explorer