

# IPCAM User Manual

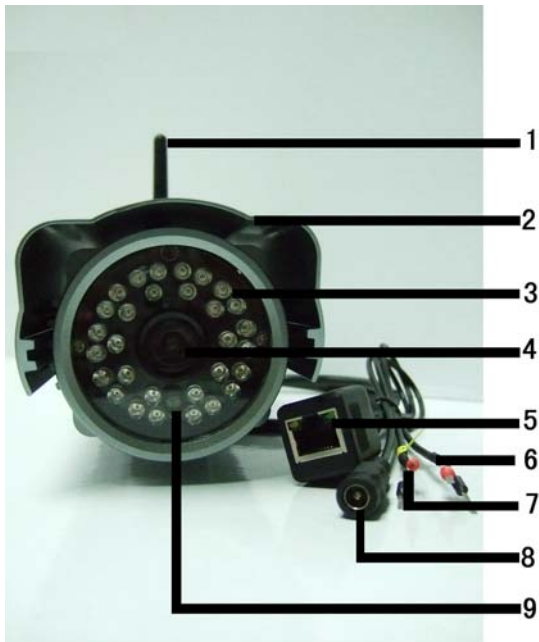
## IPCAM Series



IPCAM 01	
No.	Name
1	LDR
2	IR LED
3	IR Color Lens
4	Status Indicator
5	WIFI Antenna



IPCAM 02	
No.	Name
1	IR LED
2	LDR
3	IR Color Lens
4	Status Indicator
5	MIC
6	WIFI Antenna



IPCAM 03	
No.	Name
1	WIFI Antenna
2	Waterproof Cover
3	IR LED
4	IR Color Lens
5	RJ45 port
6	Alarm
7	Reset
8	Power
9	LDR



IPCAM 04	
No.	Name
1	LDR
2	Lens
3	IR LED
4	RJ45
5	Alarm
6	Reset
7	Power
8	WIFI Antenna(Internal)

#### Serious Declaration

- 1、All our products are in latest version before delivery. Please do not upgrade by yourself, if any bad effect after upgrade we will take no responsibility.
- 2、If need to upgrade, please consult us or your local agents first.
- 3、Personally tear down products is not permit. Otherwise we will take no responsibility.

# CATALOG

1 INTRODUCTION.....	- 1 -
1.1 FEATURE.....	- 1 -
1.2 PACKING.....	- 2 -
1.3 PRODUCT INTERFACE & PARAMETER.....	- 2 -
1.3.1 INTERFACE SKETCH.....	- 2 -
1.3.2 PARAMETER.....	- 2 -
1.4 SYSTEM REQUIREMENT.....	- 3 -
1.5 HARDWARE INTRODUCTION.....	- 4 -
1.6 SOFTWARE INSTALLATION.....	- 4 -
2 SOFTWARE OPERATION .....	- 6 -
2.1 IPCAM TOOL.....	- 6 -
2.2 LOG IN.....	- 9 -
2.3 VISITOR OPERATION.....	- 10 -
2.4 OPERATOR OPERATION.....	- 11 -
2.5 ADMISTRATOR OPERATION.....	- 11 -
2.5.1 MULTI-CAMERA SETTING.....	- 12 -
2.5.2 NETWORK SETTINGS.....	- 14 -
2.5.3 DYNAMIC DOMAIN NAME SETTINGS.....	- 16 -
2.5.4 MAIL SERVICE SETTING.....	- 17 -
2.5.5 FTP SERVICE.....	- 18 -
2.5.6 MOTION DETECTION.....	- 18 -
2.5.7 LOG.....	- 19 -
3 USER GUIDE .....	- 20 -
3.1 START TO USE.....	- 20 -
3.2 WIRELESS WAN SETTING.....	- 20 -
3.3 CONNECT TO NETWORK BY ADSL.....	- 21 -
3.4 CONNECT TO NETWORK BY ROUTER.....	- 21 -
3.5 USER OF STATIC IP ADDRESS.....	- 22 -
3.6 HOW TO USE DDNS.....	- 23 -
3.7 HOW TO VIEW IPCAM VIA MOBILE PHONE.....	- 24 -
4 APPENDIX.....	- 25 -
4.1 FAQ.....	- 25 -
4.1.1 FORGET USER AND PASSWORD.....	- 25 -
4.1.2 IP ADDRESS CONFIGURATION.....	- 25 -
4.1.3 NETWORK CONFIGURATION.....	- 25 -
4.1.4 ACTIVEX NO IMAGES.....	- 25 -
4.1.5 NETWORK BANDWIDTH PROBLEM.....	- 26 -
4.1.6 EXAMPLE:PROCESS OF REGISTER A DDNS.....	- 26 -
4.1.7 WHY POP OUT"FAIL TO CONNECT TO THE DEVICE..."?.....	- 26 -
4.1.8 THE DEVICE ALREADY ACCESS TO INTERNET,WHY CAN'T BE VISITED.....	- 30 -
4.1.9 ROBLEM WITH FIREFOX BROWSER.....	- 30 -
4.2 DEFAULT PARAMETER.....	- 33 -
4.3 PRODUCT SPECIFICATION.....	- 34 -
5 GET TECHNICAL SUPPORT.....	- 35 -

# 1 INTRODUCTION

IPCAM is the solution of composite wireless network camera. It integrates high quality digital video camera and powerful network server in itself. Then shows clear local or remote images to your desktop.

The basic function of IPCAM is to transfer remote video data through network. Using M-JPEG hardware compression technology, high quality video transmission speed can reach 30FPS in both WAN and LAN.

IPCAM video data transferring is based on TCP/IP protocol. Built-in WEB server, support Internet Explorer. Thus it is become more easy in using network management and device maintenance, realizing remote configuration, start and upgrade.

You can use IPCAM to monitoring your home, office and other spaces, as well to control camera and manage picture.

NOTE: How to using IPCAM please refer to 3.1

## 1.1 FEATURE:

- Powerful high-speed video protocol processor
- High sensitivity 1/4" CMOS sensor
- 300,000 pixels
- Waterproof
- Night vision
- Multi-language (English, German, Portuguese, Italian, Spanish, French, Russian, Simplified Chinese, Traditional Chinese)
- Optimized M-JPEG video compression transmission
- Multi-level user management and password settings
- Embedded Web server
- Support multi-browser (IE browser, Firefox browser, Google and so on)
- Wireless network (Wi-Fi 802.11b/g)
- With free domain name, no need user to register ; DDNS, UPnP and Internet (ADSL, broadband cable modem)
- Motion detection
- Bidirectional Audio
- Snapshot
- Full screen
- Wireless Lan setting, automatic searching
- Mobile phone browsing
- Log
- Backup and restore
- Support multi-protocol: Http/TCP/IP/UDP/SMTP/DDNS/SNTP/DHCP/FTP

## Advanced Features

### **Support multi-transmission protocol**

IPCAM support multi protocol, such as: TCP/IP, SMTP and HTTP. After setting email alarm, once IPCAM is triggered by alarm, it will send email to your mailbox automatically.

### **Motion detection**

You can use internal motion detection function to trigger alarm and upload data.

### **Alarm sensor I/O**

If any fire or accident occurs, detector will trigger alarm and recording. Then IPCAM will

take this information as email to send to you(I/O optional)

### DDNS

It is also very easy when using ADSL to log in or changeable IP address.As IPCAM provide DDNS function.

### Advanced user management

Only permit licensed user to visit real-time IPCAM

## 1.2 PACKING

Packing in detail as follow:

Wireless IPCAM×1

Wi-Fi Antenna×1

Power adaptor×1

User manual×1

CD×1(including wireless IP driver and IPCAM tool)

Network cable×1

Installing bracket×1(optional)

Optional: Alarm I/O link cable

Note: If anything missed or damage,please contact with us immediately.

## 1.3 Product Interface Sketch

### 1.3.1 Interface Sketch



**IPCAM 01/01W**



**IPCAM 02/02W**

I/O alarm: output:3 and 4 Input: 1 and 2



# IPCAM 03/03W

# IPCAM 04/04W

## 1.3.2 Parameter

Function	Specifications	Model No.			
Night vision	3.6mm、6mm、8mm optional	IPCAM 01	IPCAM 02	IPCAM 03	IPCAM 04
		√	√	√	√
Waterproof	IPX-0、IPX-1、IPX-2、IPX-3、IPX-4、IPX-5、IPX-6、IPX-7、IPX-8	IPX-0	IPX-0	IPX-4	IPX-0
Wi-Fi	WEP WPA WPA2 (Wi-Fi/802.11/b/g)	√	√	√	√
PTZ	Built-in Decode driver	√	√	/	/
Mobile browsing	Mobile required with Java function. PTZ function can be controled on mobile phone . (GPRS,CDMA,3G)	√	√	√	√
Multi-language	Support 9 languages(English,German, Portuguese, Italian, Spanish, French, Russian, Simplified Chinese,Traditional Chinese	√	√	√	√
Bidirectional audio	Two way audio transmission	/	√	/	/
Multi-viewing	View video from LAN&WAN	√	√	√	√
Multi-image Zooming	Zoom multi-channels	√	√	√	√
Remote recording	online recording video from LAN&WAN	√	√	√	√
Remote snapshot	online snapshot	√	√	√	√
Multi-user setting	different user's rights setting	√	√	√	√
Multi-protocol	HTTP/TCP/IP/UDP/STMP/DDNS/SNT P/DHCP/FTP	√	√	√	√
ADSL dial	Dial PPPOE	√	√	√	√
UPnP map	Plug and play	√	√	√	√
DDNS server	DynDns（dyndns、statdns、custom）3322（dyndns、statdn）	√	√	√	√
Email alarm notification	Can set different receiving mailbox	√	√	√	√
FTP upload	Support PORT and PASV	√	√	√	√
Smart motion detection	Set alarm according to schedule	√	√	√	√
Smart Hardware alarm		√	√	√	√
NOTE:					
IPCAM 01W    IPCAM 02W    IPCAM 03W    IPCAM 04W		Model no. with "w"means camera with Wi-Fi function			
IPCAM 01/01W	Suitable for indoor ,home and chain store etc	All with night vision			
IPCAM 02/02W	Suitable for indoor,home and chain store etc				
IPCAM 03/03W	Suitable for indoor/outdoor,home and chain store etc				
IPCAM 04/ 04W	Suitable for indoor,home and chain store etc				

## 1.4 PC SYSTEM REQUIREMENT

### System Configuration Requirement

Processor:2.06GHZ or above    Memory:256M or above

Network card:100M or above    Display card: 64M or above

Recommend operation system: Windows2000 、 Windows XP 、 Windows Vista、 Windows 7

## 1.5 HARDWARE INTRODUCTION

Please set your IPCAM hardware according to the following steps. Please be careful in each step to ensure your IPCAM work properly.

1) Connect network cable to IPCAM,another port to ADSL or router

2) Connect power adaptor to IPCAM

NOTE: In order to prevent damage on camera,please use the attached adaptor.

3) From start IPCAM to appear IP address in IPCAM tool will takes around 30 seconds(refer to 2.1)

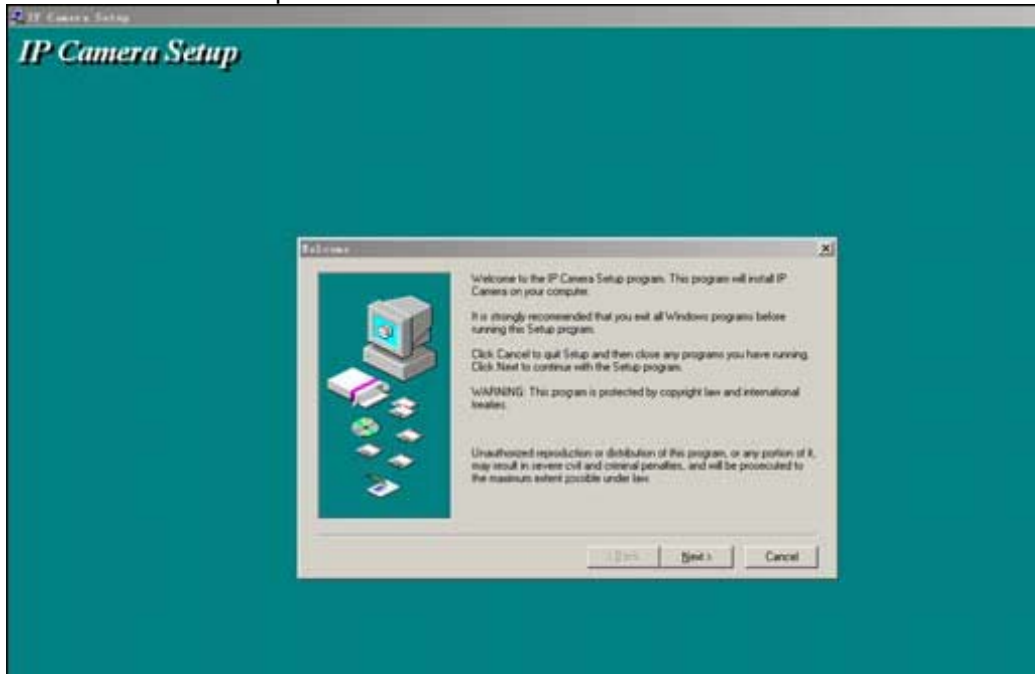
## 1.6 SOFTWARE INSTALLATION

Note: All the installation steps and explanation are in English version in the following examples.

Software installation is the key to successful using IPCAM

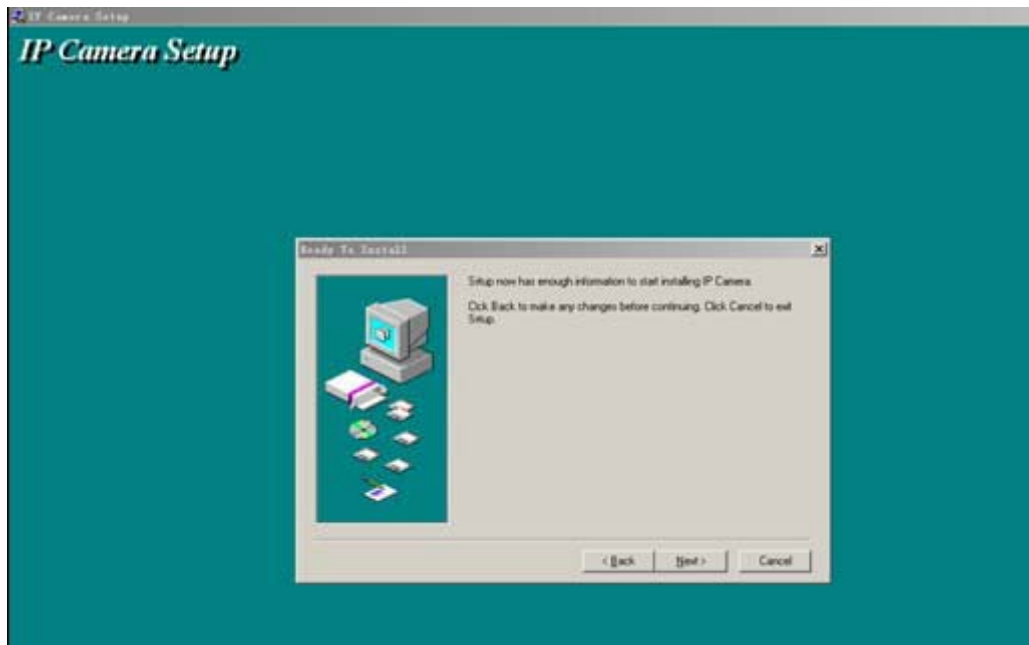
1 Open CD and according to the explanation to find the installation program

2 Double click IPCamSetup.exe to start installation

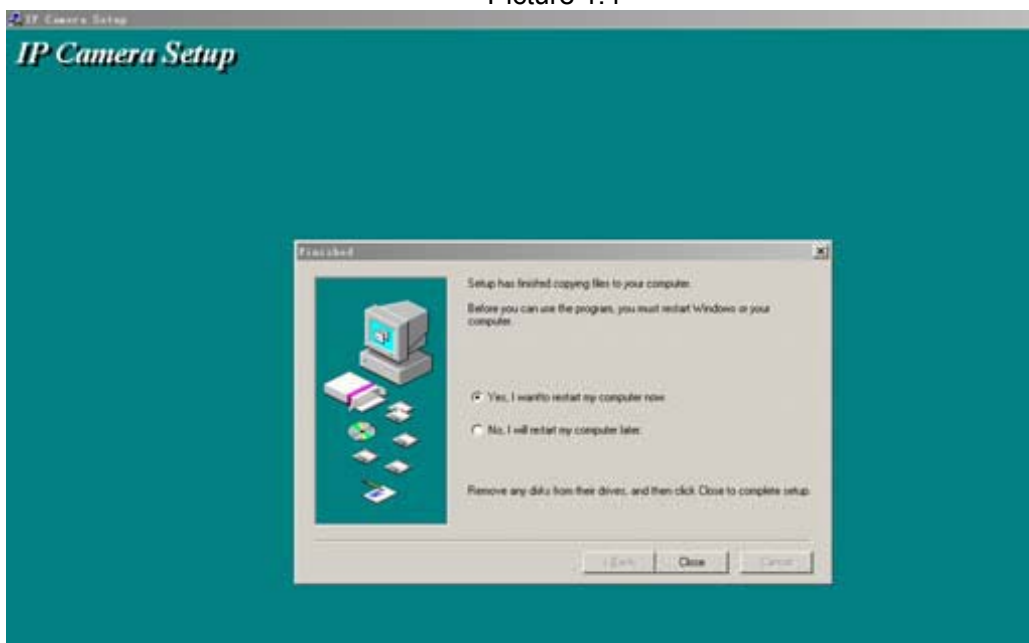


Picture 1.3

3 Click Next in turn to finish the installation



Picture 1.4



Picture 1.5



Please re-start computer after installation. Shortcut **IP Camera Tool** will appear to your desktop  
Note: Before installation, please read the following precautions and make sure you fully understand.

In order to prevent damage on IPCAM please use the attached power adaptor.  
IPCAM can only installed in indoor

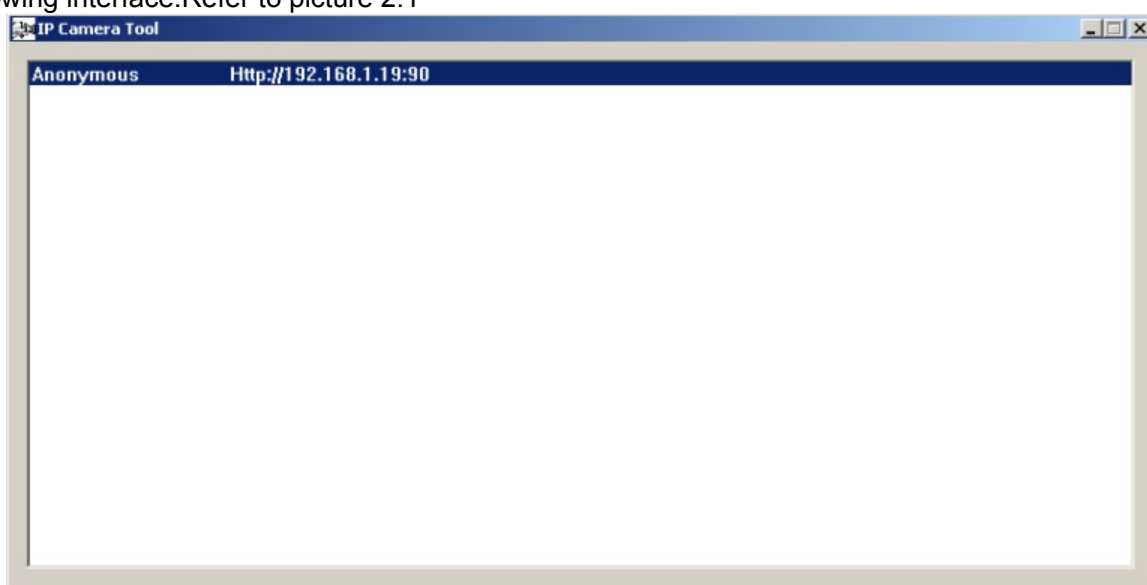


## 2 SOFTWARE OPERATION

### 2.1 IPCAM Tool



After properly installationl, please double click shortcut IP Camera Tool ,it will appear the following interface.Refer to picture 2.1



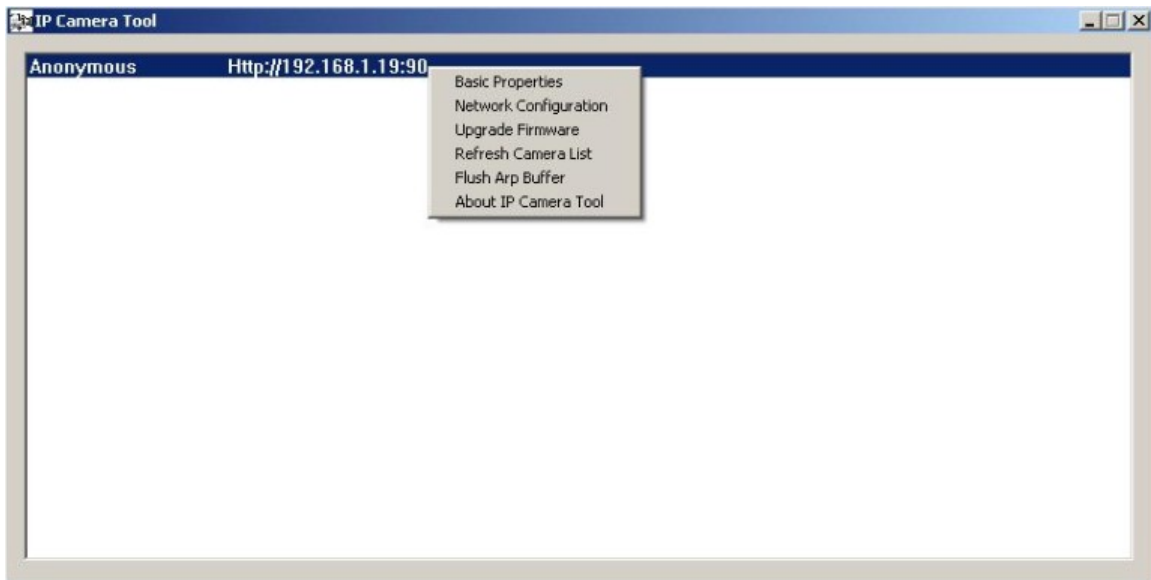
Picture 2.1

Note:It will have following 3 different case in LAN searching IPCAMs.

- 1 No any device find in LAN.(after 1min searching will appear result of no device find,and quit auto)
- 2 Device has been found.All camera will listed as picture 2.1
- 3 Device has been installed in LAN,but camera is in different network segment with computer.It will show device is not in same network segment, you can double click to open network configuration to change its paraments.

#### 6 Options:

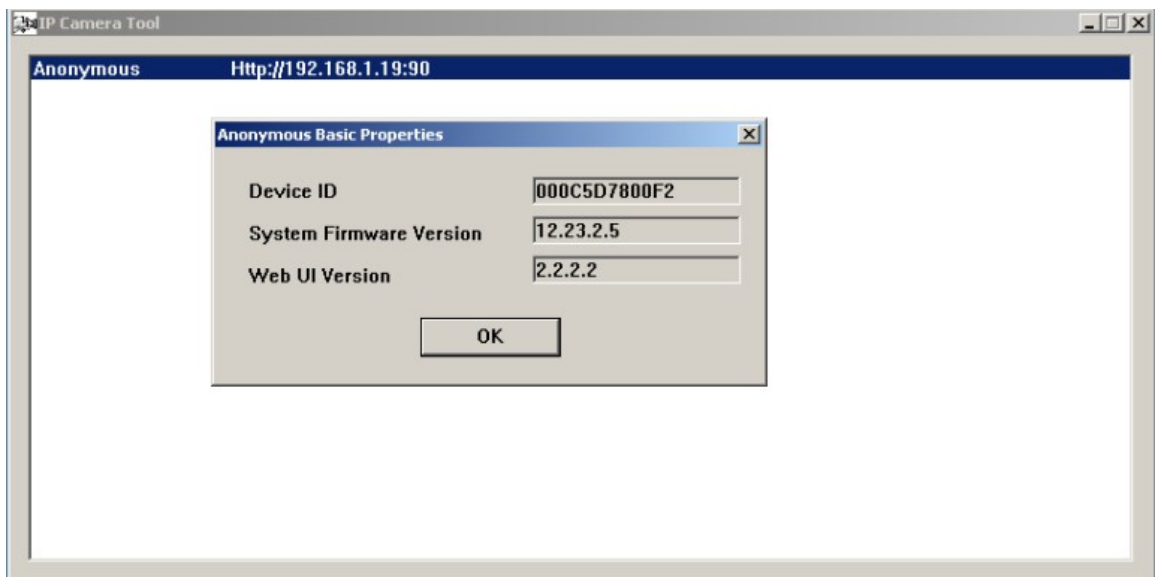
Select device list and click on the right, it will appear 6 options. Including:Basic properties,network configuration,upgrade fireware,refresh camera list,flush arp buffer and about IPCAM tool



Picture 2.2

Basic Properties

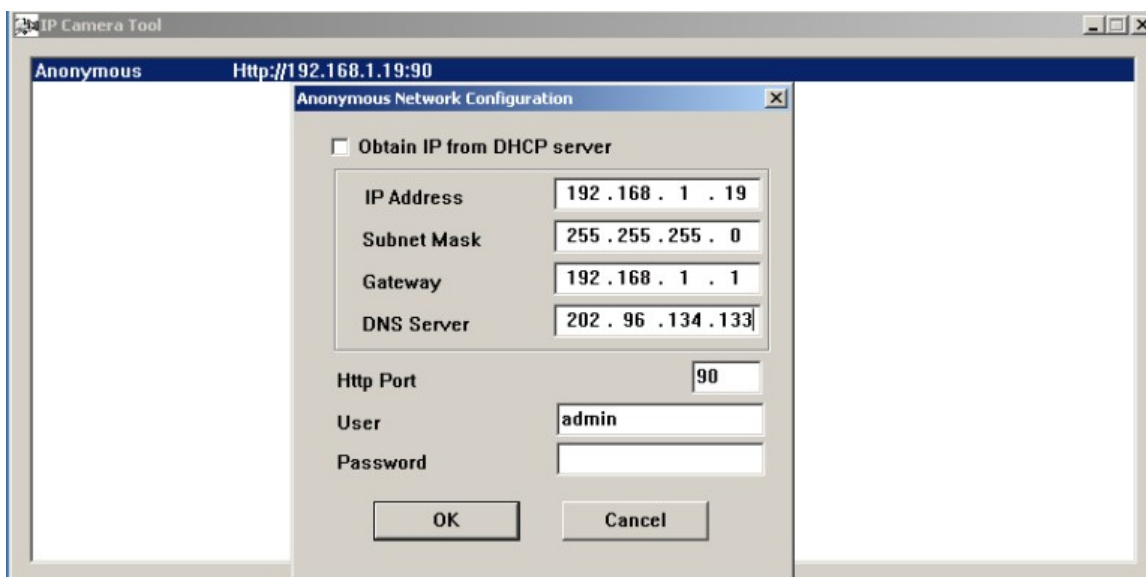
Include: Device ID, system firmware version and web UI version



Picture 2.3

Network configuration

You can configure the network parameters in this page



Picture 2.4

IP address: IP address, ensure it is in the same network segment accordance with your PC.

Subnet mask: default is : 255.255.255.0

Gateway: ensure it is accordance with your PC's gateway.

DNS: DNS facilitator IP address

Port: device provided http port, normally is 80

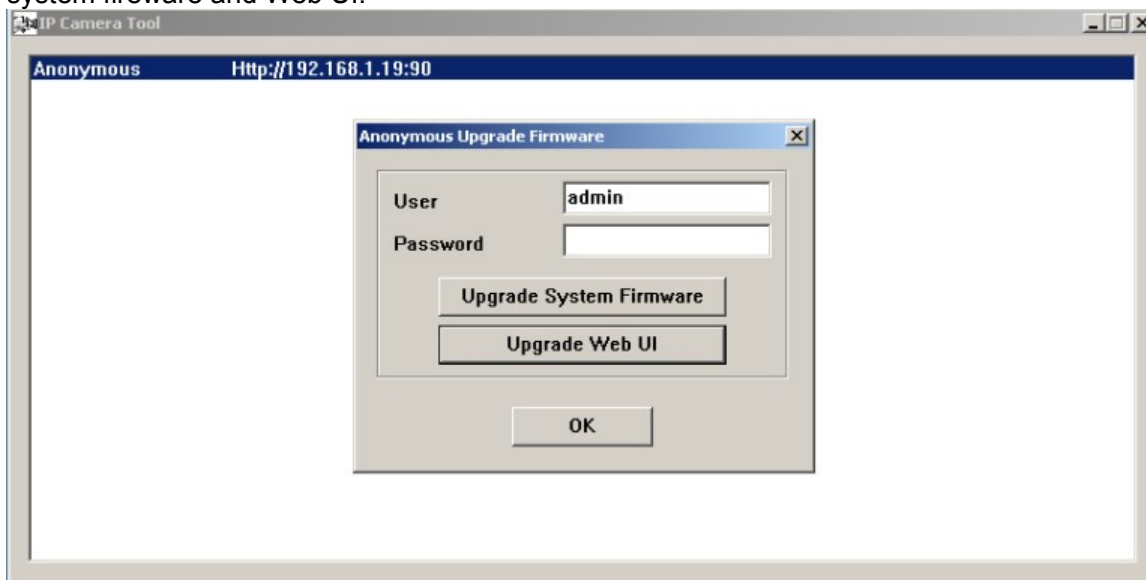
User name and password: default user name is admin, password is blank

DHCP active matching ip address protocol, if enable it, it will get ip address from DHCP server (normally is router or modem) by itself. Otherwise IP address should be set by manual.

Note: When IP address is in different network segment, please double click the device list to set network parameters.

Upgrade fireware

Type in the correct user name and password (user need have management rights) to upgrade system fireware and Web UI.



Picture 2.5

Refresh camera list

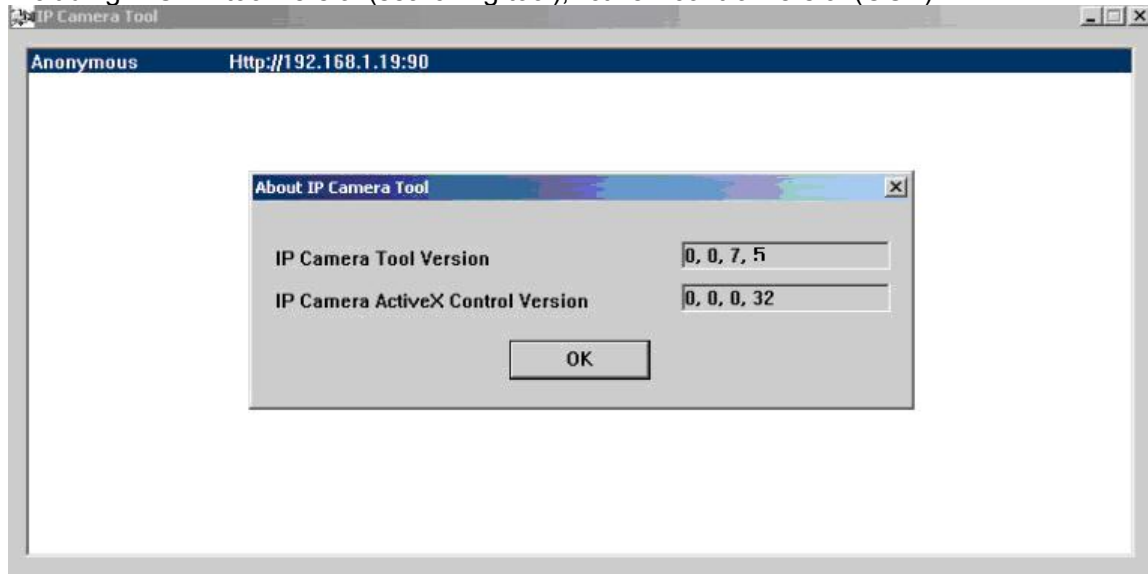
Refresh IPCAM list manually

### Flush ARP Buffer

If device wired and wireless IP are stable, you may meet a problem: IP address can searched but Web page can't be open. In this case you need to flush ARP buffer.

### About IPCAM tool

Including IPCAM tool version(searching tool),ActiveX control version(OCX)



## 2.2 LOG IN

You can visit IPCAM by IPCAM tool or IE directly

1) Double click IP address in camera list (picture 2.1).IE will automatically open and appear log in interface

2) Visit by IE directly,type in IP address in IE browser



3) Popup log in interface



Picture 2.6

Show in picture 2.6. Please type in your user name and password, select language. Default user name is : admin, password is : blank. Click "log in" to enter monitoring page( refer to picture 2.7)

Note:

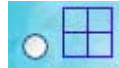
- 1、 Browser support ActiveX control(such as IE browser), then click the upper log in button
- 2、 Browser do not support ActiveX control(such as Firefox browser, Google browser), then click the below log in button. But will loss some function in this software, like: audio, recording, multi-channel settings and so on

## 2.3 VISITOR OPERATION



Picture 2.7

For example: when indicator is in green means this channel is in surveillance status







If need to check 4 channel, please click icon

OSD: appear date and time in recording. You can disable OSD function and choose its color

Add timestamp on record : after select, timestamp will be added on the lower right corner

Audio buffer(second): audio buffer time setting

Audio switch: click  to open audio and the icon will become to .Click again will close audio

Recording: click  to start recording and the icon will become to .Click again will stop recording

Snapshot: click icon  to snap picture

Multi-image zoom: click icon 

Note: above functions only appear in ActiveX plugin browser

## 2.4 OPERATOR OPERATION

When you log in as operator, you are able to control PTZ and adjust camera parameters



Picture 2.8

PTZ control : you can click different arrow, (this function is only for IPCAM 01 and IPCAM 02)



Vertical viewing





Horizontal viewing



Stop

Switch of IO output: Open  /close  (This function is closed for IPCAM)

Zoom button in software: zoom out  / zoom in  Vertical reverse : for up& down reverse image

Horizontal reverse: for left&right reverse image

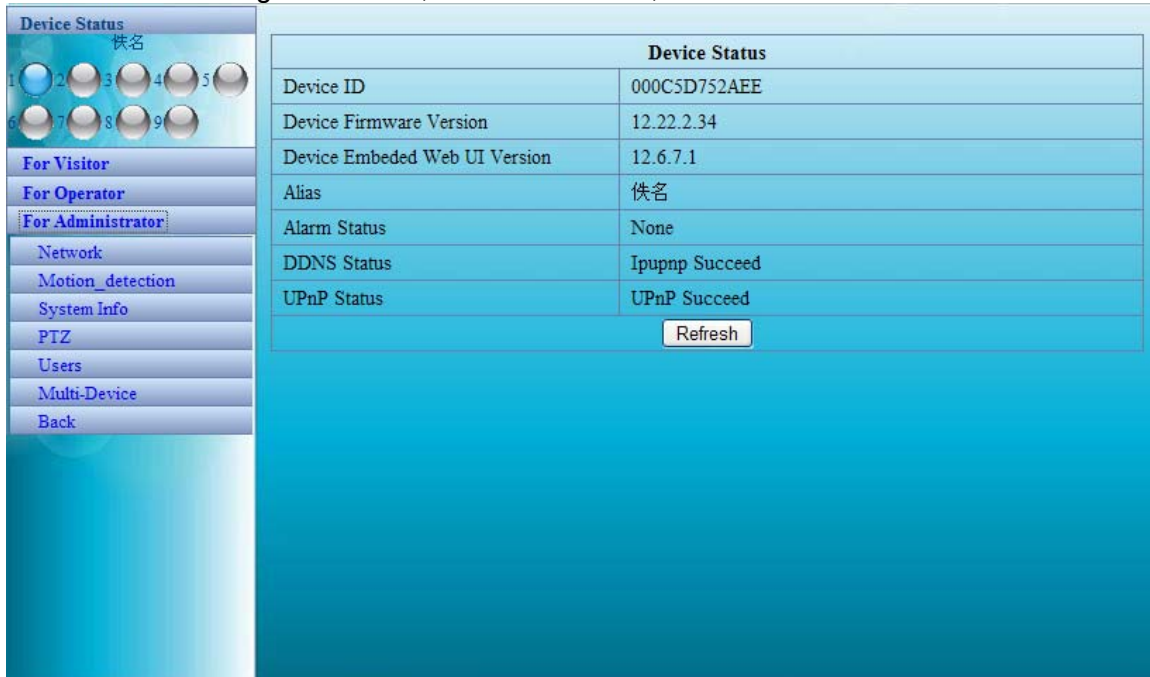
Resolution : VGA ( 640 X 480 ) / QVGA(320 X 240)

Working mode: 50Hz/60Hz/Outdoor

Color parameter: click increase  or decrease  to adjust brightness and contrast

## 2.5 ADMINISTRATOR OPERATING

When you login as a Administrator, click “ For Administrator” to enter in setting page  
Device Info: including Device ID, Firmware version, Embedded Web UI Version.



Picture 2.9

Alias: setting camera name as you like

Clock setting: enter in Date&Time settings page.

Users setting: 8 users at most. Setting user name, password and user groups(Administrator, operator, visitor) in this part.

Visitor: only with the authority of viewing.

Operator: with authority to set the camera direction, brightness and contrast of the image.

Administrator: with the authority to set the advanced configuration.

Set record path: setting saving path of record files.

Set alarm record path: setting saving path of alarm record path.



Users		
User	Password	Group
admin		Administrator ▼
		Visitor ▼
		Visitor ▼
		Visitor ▼
		Visitor ▼
		Visitor ▼
		Visitor ▼
		Visitor ▼

Set Record Path	C:\Documents and Setting	<input type="button" value="Browse..."/>
Set AlarmRecord Path	C:\Documents and Setting	<input type="button" value="Browse..."/>

UPnP settings: If you want to access the IPCAM to internet, be sure the UPnP setting succeeded.

Upgrade Device Firmware: system firmware and Application Firmware upgrade.

Restore factory settings: If there is error can not be solved, restore to factory settings to default all.

Reboot

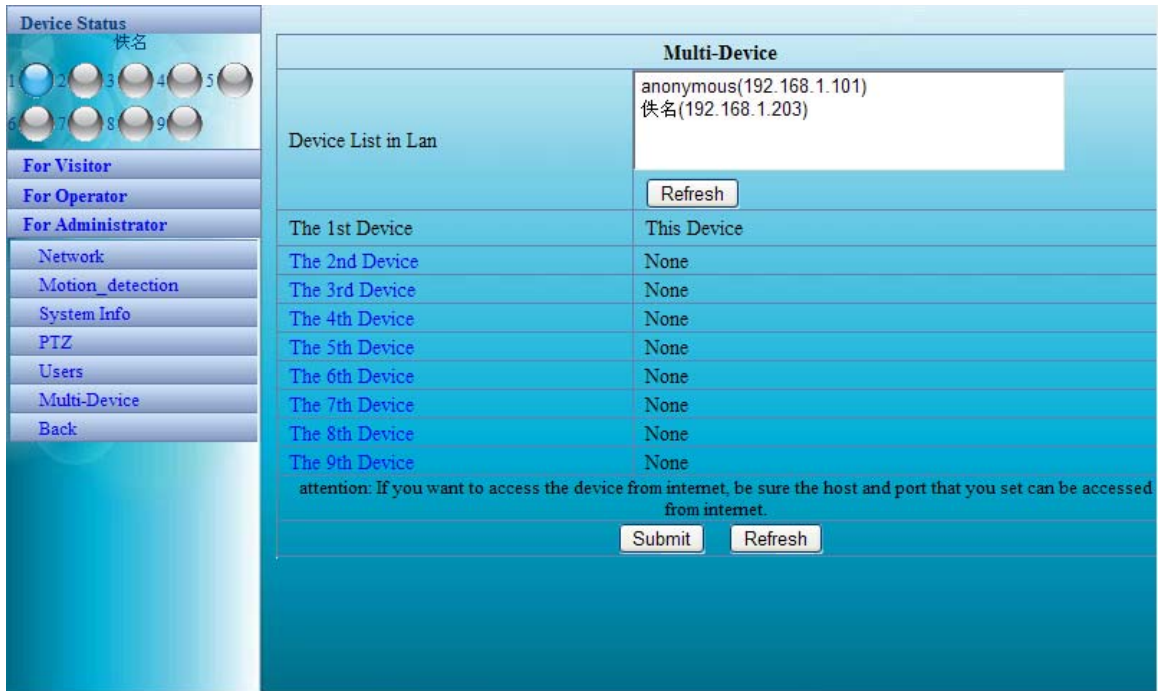
Log: list out user login information.

Back: back to monitor mode.

## 2.5.1 Multi-camera setting

Add more devices in LAN.

In the setting interface, which list out all available IPCAMs. The first one is default device. The maximum devices you can add from networking list is 9 at the same time. Click the 2nd device and double click device options of "the current list of device in LAN", the Alias, Host, Http port will be input automatically. Input the available user name and password, Click "Add" to complete the 2<sup>nd</sup> device adding. Repeat it to add more devices. Please do not forget to click "submit"



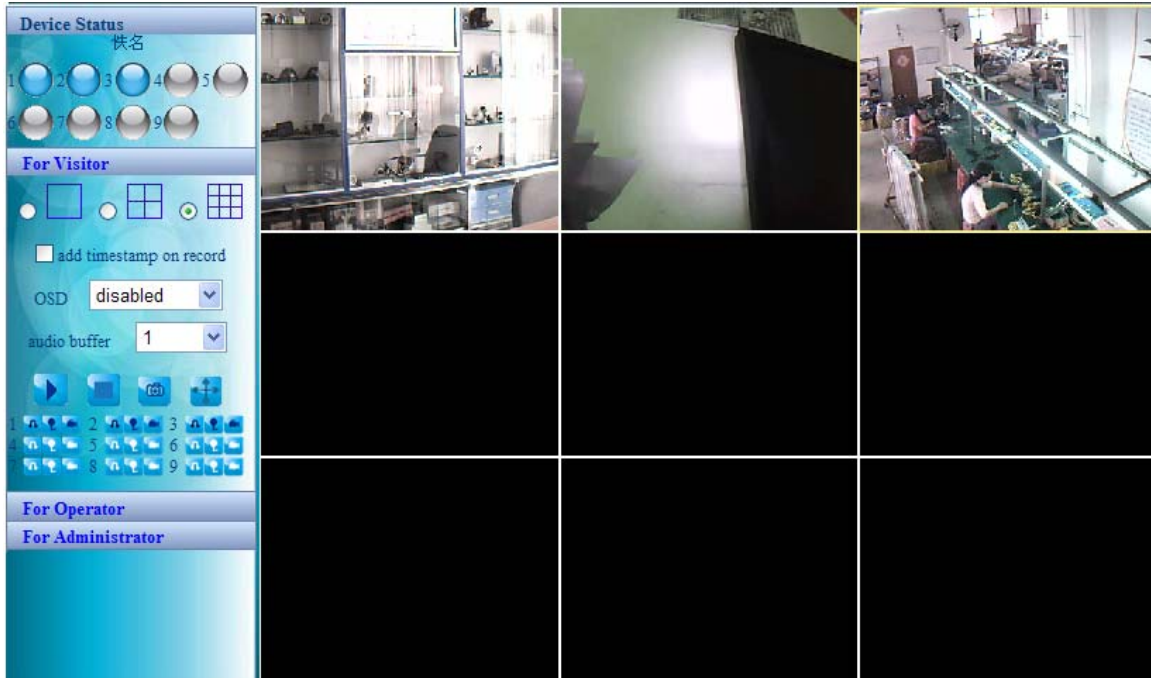
Picture 2.10

#### Add devices in Internet

Firstly, make sure the device can be accessed through IP address or DNS. For example: <http://202.96.133.134:9008> or <http://IPcam.dyndns.org:9008>. Secondly, input the device IP address: 202.96.133.134, Http port: 9008 or device DNS address IPcam.dyndns.org, Http port: 9008, and input the available user name and password; Lastly click "Add" to complete the device adding. Repeat these steps to add other devices.

Multi-Device	
Device List in Lan	<div>anonymous(192.168.1.188)</div> <div>Refresh</div>
The 1st Device	This Device
The 2nd Device	None
Alias	<div>IP camera</div>
Host	<div>eyesight0017.ipupnp.hk</div>
Http Port	<div>188</div>
User	<div>admin</div>
Password	<div>•••••</div>
	<div>Add</div> <div>Remove</div>
The 3rd Device	None
The 4th Device	None
The 5th Device	None
The 6th Device	None
The 7th Device	None
The 8th Device	None
The 9th Device	None

Picture 2.11



Note: this function only exist in the browser which support ActiveX.

Picture 2.12

## 2.5.2 Network settings

### Basic network settings

Network light: control the green light on lens to turn on or not.

If the device is connected to the router with DHCP server function, you can choose "To obtain IP addresses from a DHCP server"; otherwise please set the network parameters by manual as followed picture.

Http port: In most cases, you can set the value to 80. If your internet service provider blocked this port, please set other values (from 0-65535, the value can not be same as gateway. For example: 8080, 85, 8888, etc.

Basic Network	
Obtain IP from DHCP Server	<input type="checkbox"/>
IP Addr	192.168.1.203
Subnet Mask	255.255.255.0
Gateway	192.168.1.1
DNS Server	202.96.134.33
Http Port	203
Network Lamp	<input checked="" type="checkbox"/>
<input type="button" value="Submit"/> <input type="button" value="Refresh"/>	

Picture 2.13

### Wireless LAN setting

1, setting by manual

Enter in the router setting page which your device connected, enable wireless network and set wireless network ID(SSID), CHANNEL, Encryption, Authentication; then login the device as the administrator, enter in the wireless LAN setting page, fill in each options( make sure same with the setting in router). Unplug the network cable, wireless enabled. For example: followed 2.14a

Wireless Lan		
Wireless Network List	<div></div> <div>Scan</div>	
Using Wireless Lan	<input checked="" type="checkbox"/>	
SSID	IPCAM1	
Network Type	Infra	
Encryption	WEP	
Authetication	Open System	
Key Format	Hexadecimal Number	
Default TX Key	1	
Key 1		64 bits
Key 2		64 bits
Key 3		64 bits
Key 4		64 bits
<div>Submit</div> <div>Refresh</div>		

Picture 2.14a

## 2、Search wireless network automatically

Click “Scan”, IPCAM search wireless network automatically, available wireless network information would be scanned out and make a list. The wireless network information will appeared in below input box after you selected the wireless network. Input the password and submit. Please refer to picture 2.14b.

Wireless Lan	
Wireless Network List	<div></div> <div>Scan</div>
Using Wireless Lan	<input checked="" type="checkbox"/>
SSID	IPCAM1
Network Type	Infra <input type="button" value="v"/>
Encryption	WEP <input type="button" value="v"/>
Authetication	Open System <input type="button" value="v"/>
Key Format	Hexadecimal Number <input type="button" value="v"/>
Default TX Key	1 <input type="button" value="v"/>
Key 1	<div></div> 64 bits <input type="button" value="v"/>
Key 2	<div></div> 64 bits <input type="button" value="v"/>
Key 3	<div></div> 64 bits <input type="button" value="v"/>
Key 4	<div></div> 64 bits <input type="button" value="v"/>
<div>Submit</div> <div>Refresh</div>	

Picture 2.14b

### 3、Supporting wireless encryption of web, wpa and wpa2

ADSL settings: When your device connected internet through ADSL, you need to input the user name and password which you get from ISP. Click “submit” to complete the settings. Your device would be connect to internet after these settings.

ADSL	
Using ADSL Dialup	<input checked="" type="checkbox"/>
ADSL User	<div></div>
ADSL Password	<div></div>
<div>Submit</div> <div>Refresh</div>	

Picture 2.15

### 2.5.3 Dynamic Domain Name Settings

DDNS Service: Support the protocol which provide by DynDNS.

User name and password: The user name and password you use when apply for domain name

DDNS Domain name: the domain name you apply for device.

DDNS status: After above information settings, click “Submit”, the the device would be reboot. Then you will know whether the DDNS settings succeed of not from this content

Note: If the device is default with free domain name, it is no need to apply or modify the DDNS again. Please directly input the domain name on browser, here the webpage will ask for input the user and password, then you can get into the video page.

DDNS	
DDNS Service	Ipupnp.org
Update URL	http://www.ipupnp.org/upg like: http://www.Ipupnp.org/upgengxin.asp
DDNS Mode	2
DDNS User	eyesight0017
DDNS Password	•••••
DDNS Domain	ipupnp.hk
<input type="button" value="Submit"/> <input type="button" value="Refresh"/>	

Picture 2.16

### 2.5.4 Mail Service Setting

Send and receive emails: receiving mailbox will receive email from sender, when alarm or device IP address changed.

Note: Send alarm pictures. Alarm service setting —> select “send mail on alarm”

Sender: sending mailbox.

Receiver: used for receive capture pictures and IP address.

SMTP server: SMTP server of sending mailbox.

Need Authentication: if the sending mailbox need authentication, please fill correct sender user name and password.

Mail test: Click “submit” after fill all of the mail options; then click “test” to test. The testing result will appeared in a pop up window.

Report internet IP by mail: select this option, the new IP address will be received by email when the internet IP or port changed. Please make sure the port already mapping to the router.

(the mail content similar with this: IPCAM's url is http://119.123.207.96.9002)



Mail	
Sender	289893348@qq.com
Receiver 1	guest1@163.com
Receiver 2	guest2@163.com
Receiver 3	guest3@163.com
Receiver 4	guest4@163.com
SMTP Server	smtp.qq.com
SMTP Port	25
Need Authentication	<input checked="" type="checkbox"/>
SMTP User	289893348@qq.com
SMTP Password	●●●●●●●●
	<input type="button" value="Test"/> Please set at first, and then test.
Report Internet IP by Mail	<input checked="" type="checkbox"/>
<input type="button" value="Submit"/> <input type="button" value="Refresh"/>	
<b>Note:</b> "Report Internet IP by Mail" checked: When the Internet IP changed, it will send by mail. If you set the IP port, make sure the port is map to the router correctly by UPNP or Virtual Map function.	

Picture 2.17

### 2.5.5 FTP service

After FTP settings, IPCAM will upload image to FTP server when alert.

Note: alarm images send by mail. Alarm service setting → select "upload image now".

FTP server: FTP server name or IP address.

FTP port: FTP server port, the value is 21 in most cases.

FTP user: FTP server user name (support upload functions)

FTP password: corresponding to the FTP server user name

FTP upload folder: Virtual directories under each user name in FTP server.

FTP mode: FTP upload mode: PORT, PASV.

Upload image now: select it, and if settings are succeed, it will upload images to FTP server all the time.

FTP testing: After FTP server settings, click "submit", then click "test" for FTP testing. The FTP testing result will appeared in a pop up window.



Ftp	
FTP Server	<input type="text" value="ftp.server.com"/>
FTP Port	<input type="text" value="21"/>
FTP User	<input type="text" value="server"/>
FTP Password	<input type="password" value="••••••••"/>
FTP Upload Folder	<input type="text" value="/"/>
FTP Mode	<input type="text" value="PORT"/> ▼
	<input type="button" value="Test"/> Please set at first, and then test.
Upload Image Now	<input type="checkbox"/>
<input type="button" value="Submit"/> <input type="button" value="Refresh"/>	

Picture 2.18

## 2.5.6 Motion Detection

Enter alarm service setting page, set motion diction.

Motion detect enable

When the motion detection enabled, Device can trigger to send e-mail and record, the green icon will change to red in the monitor page, and you will hear the alarm sound.

Motion detect sensibility

Number 1-10 is the level of alarm sensibility, 10 is the highest sensibility.

Send mail on alarm

Sending image to receiving mailbox after alarm.( please make sure the mail service setting completed in advance.)

Upload picture to FTP on alarm

Enable upload image and interval time of upload image functions ( Be sure the complete the FTP server settings, the time-Unit is seconds)

Rcording and saving to local PC according to the Armed time.


After enable the motion detect, when you access to the monitoring page in IE browser, if the alarm triggered, it will record for 1 minute according to Armed time and save to your PC.

Alarm	
Motion Detect Armed	<input checked="" type="checkbox"/>
Motion Detect Sensibility	5 <input type="button" value="v"/>
Alarm Input Armed	<input checked="" type="checkbox"/>
Triger Level	High <input type="button" value="v"/>
IO Linkage on Alarm	<input type="checkbox"/>
Send Mail on Alarm	<input type="checkbox"/>
Upload Image on Alarm	<input type="checkbox"/>
Scheduler	<input checked="" type="checkbox"/>
Day	0 1 2 3 4 5 6 7 8 9 10 11 12 13 14 15 16 17 18 19 20 21 22 23
Sun	
Mon	
Tue	
Wed	
Thu	
Fri	
Sat	
<input type="button" value="Submit"/> <input type="button" value="Refresh"/>	

Picture 2.19

## 2.5.7 Log

Enter the log page, the user (IP address), visiting time, authority(IPCAM user name) will be list out.

Log				
Mon, 2011-04-25 01:53:19	admin	192.168.1.3	access	

## 3 User Guide

### 3.1 Start to Use

After installation, please operate as followed step.

When power on, the camera will rotate a cycle and centered automatically.

1) Use network cable connect the device to WAN.



2) Use the IPCAM tool [IP Camera Tool](#) to set basic configuration.

3) When the IP address appeared in the IPCAM tool list, it means the basic configuration is completed.

4) When you first time use this device please set the IE browser security settings.(refer to 4.1.3)

5) log in (refer to 2.2)

6) You can login as visitor, operator or administrator.

### 3.2 Wireless WAN Setting

1) Your router should support the wireless network functions if you want the device use wireless network function.

2) Enter the wireless setting page in router (please refer to router user guide). Find the wireless network ID (SSID), CHANNEL, Encryption, Authentication, and then fill it in the setting page icon 3.1.

3) Fill the options in below icon, click “submit” and reboot the device.

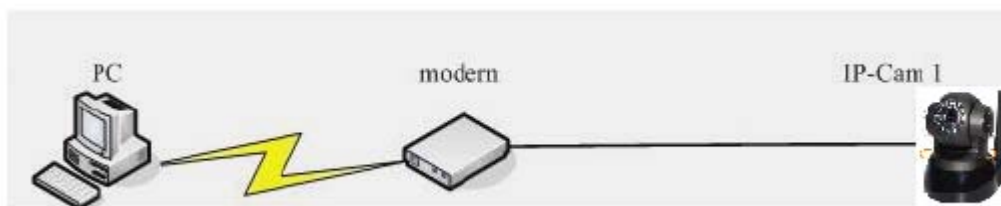
Note: this device support encryptions of WEP/WPA/WPA2.

Wireless Lan	
Wireless Network List	<div></div> <div>Scan</div>
Using Wireless Lan	<input checked="" type="checkbox"/>
SSID	IPCAM1
Network Type	Infra ▼
Encryption	WEP ▼
Authetication	Open System ▼
Key Format	Hexadecimal Number ▼
Default TX Key	1 ▼
Key 1	1122223345 64 bits ▼
Key 2	64 bits ▼
Key 3	64 bits ▼
Key 4	64 bits ▼
<div>Submit</div> <div>Refresh</div>	

Picture 3.1

- 4) Pull off the network cable while reboot the device.
- 5) About 30s later, if LED indicator in front of the camera flick fast, and the IP address list appeared in the IPCAM tool list, it means the device is working under wireless mode.
- 6) Log in again.(refer to 2.2)

### 3.3 Connect to network by ADSL



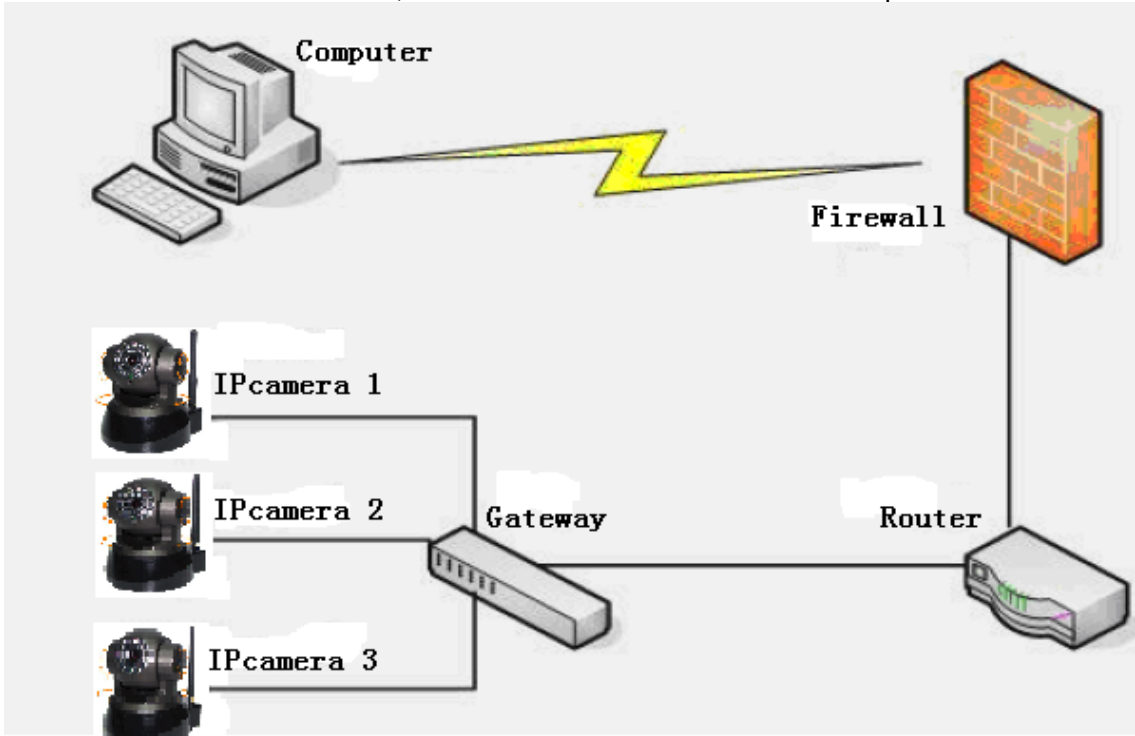
ADSL	
Using ADSL Dialup	<input checked="" type="checkbox"/>
ADSL User	<div></div>
ADSL Password	<div></div>
<div>Submit</div> <div>Refresh</div>	

- 1) Use the network cable to connected the device to PC.

- 2) Use the IPCAM tool to set basic configuration
- 3) Log in the device as Administrator, enter in the ADSL setting page, input your user name and password.
- 4) Enable DDNS service, click <submit> and reboot the device.
- 5) Connected the device to internet by ADSL, you can access the device through domain name in internet.

### 3.4 CONNET TO NETWORK BY ROUTER

If your router have been set dial network function, you can use router to share ADSL to connect to network. In this case, will no need to set ADSL account and password



- 1) Using network cable to connect camera to local LAN
- 2) Using IPCAM tool settings to set basic camera configuration(refer to 2.1)
- 3) Log in as administrator
- 4) Go to DDNS setting page to enable DDNS server. Click (confirm)then restart camera(refer to 2.5.3)
- 5) Then you can visit camera by domain name from internet

### 3.5 USER OF STATIC IP ADDRESS

Now using static IP address is no need DDNS to start remote visiting. After finish local network IP address setting, you can use camera WAN IP to visit directly. There is 3 different ways to obtain camera WAN viewing IP address

Using mail to send internet IP address

After setting email. When internet IP or port changed, IP will send mail to your receiving mailbox.(Refer to 2.5.4 email and FTP service)

Obtain from website

You can get the device WAN ip address via same segment pc, there are Ways shown in fowlling: Open IE and visit the site: <http://www.whatismyip.com> It will send you your WAN IP address

**What Is My IP - The fastest, easiest way to determine your IP address.**

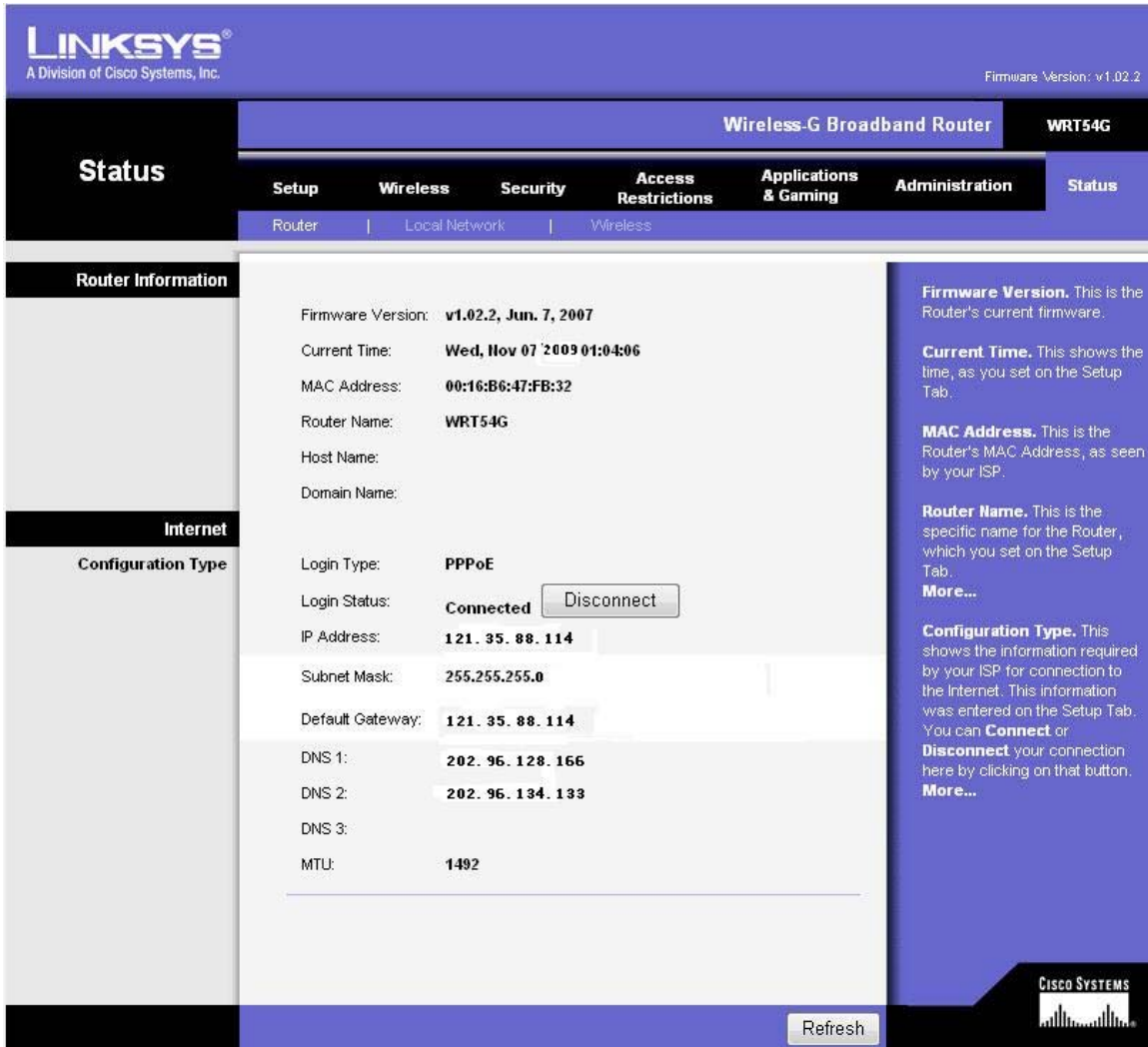
What Is My IP Address - Service provided by WhatIsMyIP.com

**Your IP Address Is: 121.35.88.114**

Obtain from router

Example as Linksys model WRT54G

- 1) Obtain IP address of router(local network default gateway),log in router
- 2)Type in IP address of router in IE browser( LINKSYS WRT54G default is : 192.168.1.1);go to " Status" page you will see WAN IP address of your router. In this example,the IP address is : 121.35.88.114



Picture 3.5

Visit from internet

You can visit IPCAM from internet by type in IP address in IE browser directly.Such as : <http://121.35.88.114:203/>

Note: Ensure the port mapping has been enable.You can use two ways to open port mapping.

Go to setting page of router to enable UpnP function. And go to “UPnP setting” page to enable it and ensure UPnP connection status is connect successful

If your router have virtual mapping function. Then go to router setting page, add camera IP address and port to virtual mapping list.

## 3.6 HOW TO USE DDNS

Note: If to platform “ipupnp.hk”, it no need to do this step of DDNS setting.

When using ADSL connection,camera will automatically connect to internet. Each re-start, ADSL provider will distribute an IP address to your camera, so your IPCAM is in changeable status. And it may bring many inconvenience in visiting by IP or domain name. In this case DDNS will help to solve this problem. It can map dynamic IP address to stable. Thus no matter how changeable IP for this camera we can use stable one to visit it. When you using DDNS to search what the camera network, the IP address is not required.

- 1) Connect to the provider site of free domain name. Apply the free domain name, such as <http://www.3322.org>(refer to 4.1.6)
- 2) Log in the camera administrator page, go to “ DDNS settings”, type in user name, password and domain name(refer to 2.5.3).Then click (confirm) and restart camera.
- 3) Re-sign in camera administrator page, go to “DDNS settings” and check if the DDNS connection is successful or not
- 4) Go to “UPnP setting” page, it should be connect successful. Otherwise, you need to “basic network setting” page to change the HTTP port(refer to 2.5.2).Then click (confirm) and restart camera
- 5) Re-sign in camera to double check if DDNS and UpnP is connect successful
- 6) You just need to type domain name into IE browser(like: <http://laojia2009.3322.org:85>) , browser will automatically go to camera entering page

Please wait for few minutes, as camera will automatically dial to connect to internet and finish the connection with DDNS. Then you can use domain name to visit camera from WAN

If you have finished the setting of DDNS and UPnP, please type domain name into IE(such as: <http://laojia2009.3322.org:85>) to visit camera. If there is multi-channels connect to the same router, please use domain name with port to visit camera(such as: <http://laojia2009.3322.org:85>)

UPnP	
Using UPnP to Map Port	<input checked="" type="checkbox"/>
<input type="button" value="Submit"/> <input type="button" value="Refresh"/>	



Device Status	
Device ID	000C5D752AEE
Device Firmware Version	12.22.2.34
Device Embedded Web UI Version	12.6.7.1
Alias	佚名
Alarm Status	None
DDNS Status	Ipupnp Succeed
UPnP Status	UPnP Failed: Errors in Chat with UPnP Device
Refresh	

Picture 3.7

## 3.7 How to View IPCAM via Mobile Phone

Copy IPCamera.jar to device storage on phone, then install it according to mobile phone prompts.

Run IPCAM player.

Set up alias, hostname or ip(IPCAM must be accessed to internet, if your mobile phone is connecting to WIFI local network, please set up LAN IP), port, user, pwd, resolution(160\*120 Only for new version IPCAM)

Click confirm to view camera images

2 4 6 8 keys to control camera up/down/left/right movement, same direction with showing images.

1 3 7 9 keys to control camera left and right, up and down automatically rotating start and stop.

Note: mobile player only support mobile phone, PDA etc with midp2.0 java.

# 4 Appendix

## 4.1 FAQ

**Note:** Please check your network working status first when meet any question.

And check network device status indicator, like concentrator, switcher, network card. If not good, please check your network connection.

### 4.1.1 Forget user and password

Press down reset key on the button of device 5 seconds, device default all settings including user and password. Then set your new user and password.

Default administrator user: **admin**

Default administrator password: **NONE**

### 4.1.2 IP Address Configuration

Check device IP address is in same segment of your computer or not: Open my computer> control panel> network and internet connect> local network> property> internet protocol(TCP/IP) check subnet mask, IP address and gateway. Please make sure the IP



addresses are in same segment, otherwise you can't correctly visit the device.

### 4.1.3 Network Configuration

Ensure your HTTP server is correctly to configure and work well, if you used firewall software, pls make sure your port 80 can be visit from outside. If you share ADSL router, pls make sure to set suitable port( refer to your router user manual). If can't visit, pls change your port.

### 4.1.4 ActiveX No images

Video images received via ActiveX and display to user. If incorrect installation, images can't be shown. Here are two solutions:

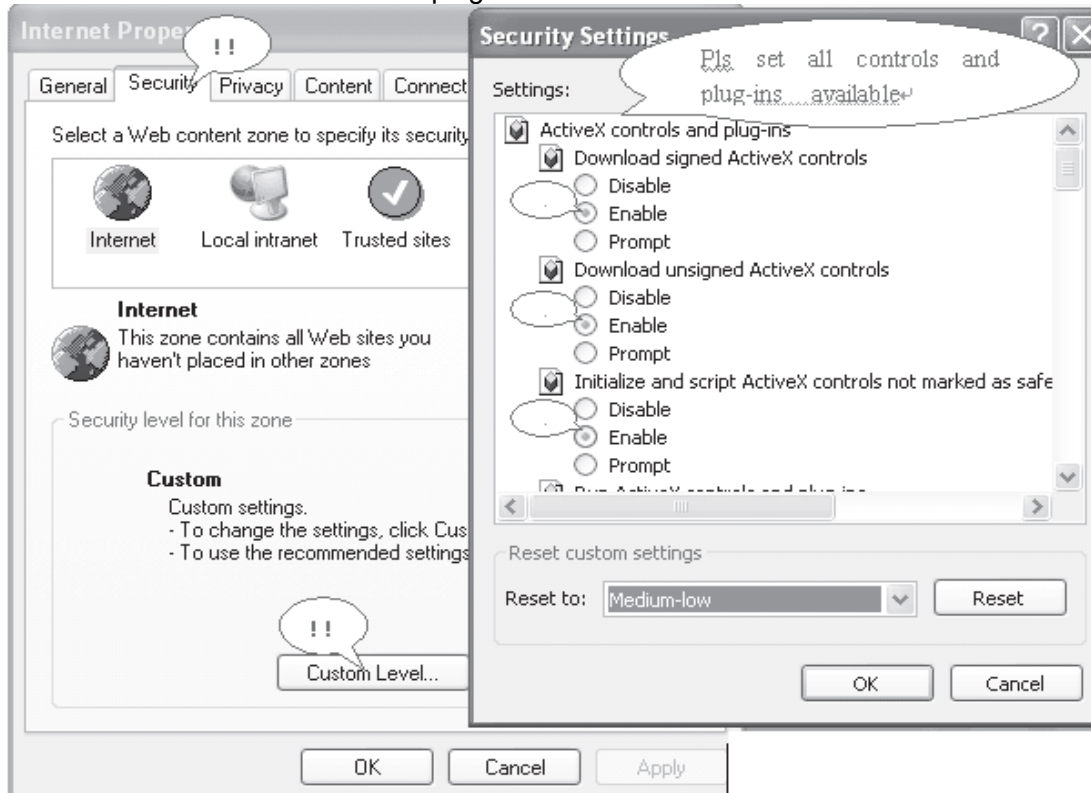
- 1) Install "IPCAM Tool", ActiveX will be installed at the same time(recommend)
- 2) Download ActiveX when first visiting to device and install it, then change the IE Explore security settings:

"IE" > "Tool"> "Internet Property"> "Security"> "Custom level"> "ActiveX controls and plug-ins" enable the below three items:

#### **Enable: Download unsigned ActiveX controls**

Enable: Initialize and script ActiveX controls not marked as safe.

Enable: Run ActiveX controls and plug-ins



Pic:4.1

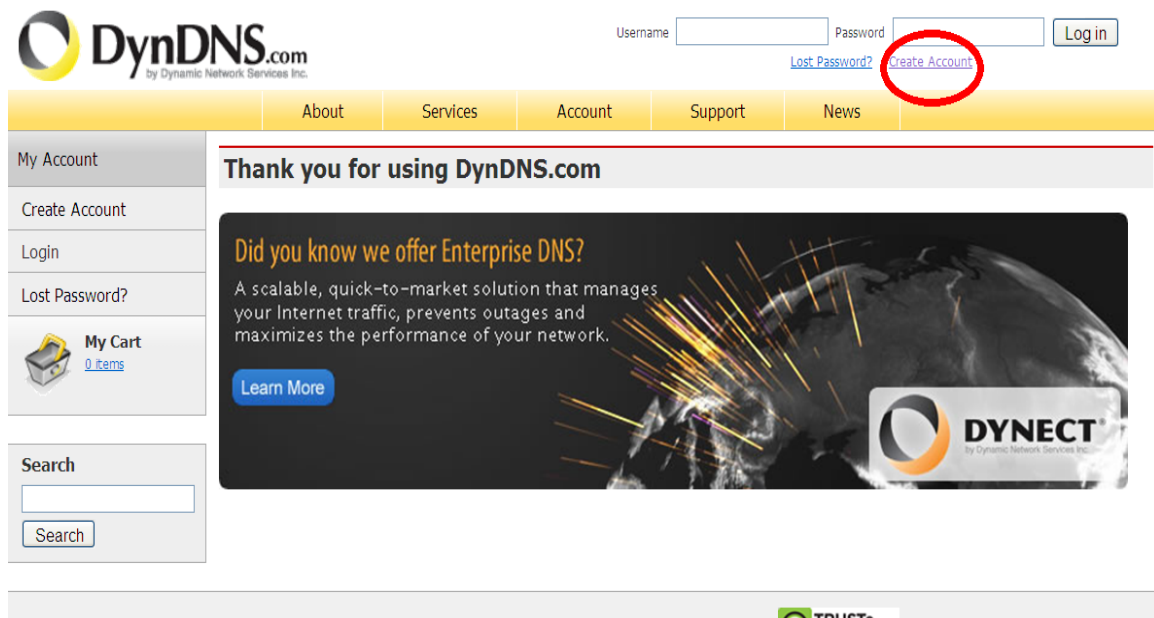
### 4.1.5 Network bandwidth problem

Picture frames depends on below factors: 1. Network bandwidth; 2. PC performance network condition; 3. Logged users( too many user login will reduce picture frames.); 4. Usage of switcher and concentrator, more than two device please use switcher. The bandwidth is higher the image quality is better.

#### 4.1.6 Example: Process of register a DDNS

Note: If to platform “ipupnp.hk”, it no need to do this step of DDNS setting.

1、visit <http://www.dyndns.com> to create a new account



2、Fulfill suitable user name, mail box and relative data, it will send all settings to your email box.

[About](#)[Services](#)[Account](#)[Support](#)[News](#)

## Create an account or log in to continue

Username: Password: Confirm password: Email: Confirm email: Subscribe to: ☒ DynDNS.com newsletter  
(1 or 2 per month)☐ Dyn Inc. press releases☐ Remove HTML formatting from email

### Security Image:



Enter the numbers from the above image:

☒ I agree with the [acceptable use policy \(AUP\)](#) and [privacy policy](#).[Create Account](#)

3、login the created account, add new domain name

The screenshot displays the 'Internet Guide' website interface. At the top, a navigation bar includes links for 'About', 'Services', 'Account', 'Support', and 'News'. Below this is a large banner with the text 'INTERNET GUIDE' and a list of features: 'Web filtering', 'Anti-phishing', 'Anti-fraud', 'Anti-spyware', 'Anti-malware', 'Faster web experience', 'No network settings', and 'One-click install'. The main content area is divided into four columns: 'My Account', 'My Services', 'Billing', and 'Account Settings'. The 'My Services' column contains a description of services and a list of links, with 'Add Host Services' circled in red. The 'Billing' column lists options for updating billing information and viewing invoices. The 'Account Settings' column provides links for changing email addresses, passwords, usernames, and other account details. A search bar is located on the left side of the page.

**My Account**

- My Services
- Account Settings
- Billing
- My Cart**  
0 Items

**Search**

**My Services**

View, modify, purchase, and delete your services.

- [My Zones/Domains](#)
- [Add Zone/Domain Services](#)
- [My Hosts](#)
- [Add Host Services](#)
- [Dynamic DNS Pro](#)
- [Internet Guide](#)
- [Spring Server VPS](#)
- [MailHop Outbound](#)

**Billing**

Update your billing information, complete a purchase, and view invoices.

- [View Shopping Cart](#)
- [Active Services](#)
- [Order History](#)
- [Billing Profile and Vouchers](#)
- [Renew Services](#)
- [Auto Renew Settings](#)
- [Sync Expirations](#)

**Account Settings**

Update your email address, set preferences, and delete your account.

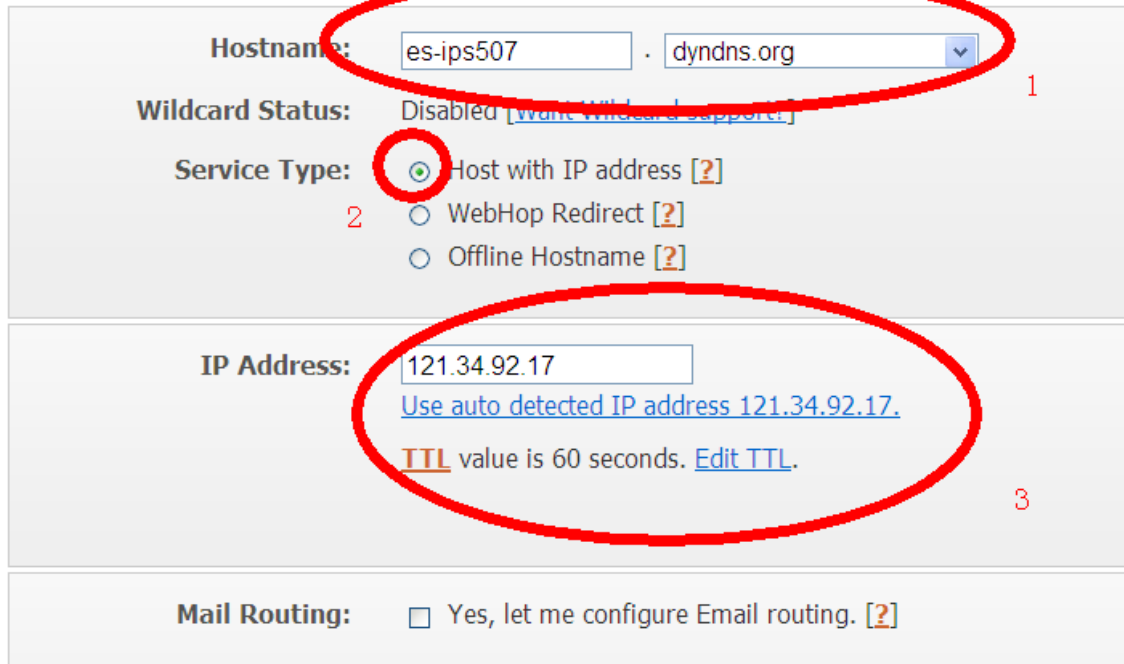
- [Change Email Address](#)
- [Change Password](#)
- [Change Username](#)
- [Contact Manager](#)
- [Mailing Lists](#)
- [Move Services](#)
- [Preferences](#)
- [Close Account](#)

4、input your domain name information

## Add New Hostname

[↑ Host Services](#)

Note: You currently don't have any active [Dynamic DNS Pro upgrades](#) in your account. You cannot use some of our Host Service features. Paying for an Dynamic DNS Pro upgrade will make this form fully functional and will add several other features.



**Hostname:**  . dyndns.org 1

**Wildcard Status:** Disabled [\[Want Wildcard Support?\]](#)

**Service Type:** 2

- ☒ Host with IP address [\[?\]](#)
- ☐ WebHop Redirect [\[?\]](#)
- ☐ Offline Hostname [\[?\]](#)

**IP Address:**  3

[Use auto detected IP address 121.34.92.17.](#)

**TTL** value is 60 seconds. [Edit TTL.](#)

**Mail Routing:** ☐ Yes, let me configure Email routing. [\[?\]](#)

### 5、Successfully accessing DDNS to Internet

#### Host Services

[Add New Hostname](#) - [Host Update Logs](#)

[es-ips507.dyndns.org](#) successfully activated.

Hostname	Service	Details	Last Updated
<a href="#">es-ips507.dyndns.org</a>	Host	121.34.92.17	Jan. 18, 2010 3:50 AM

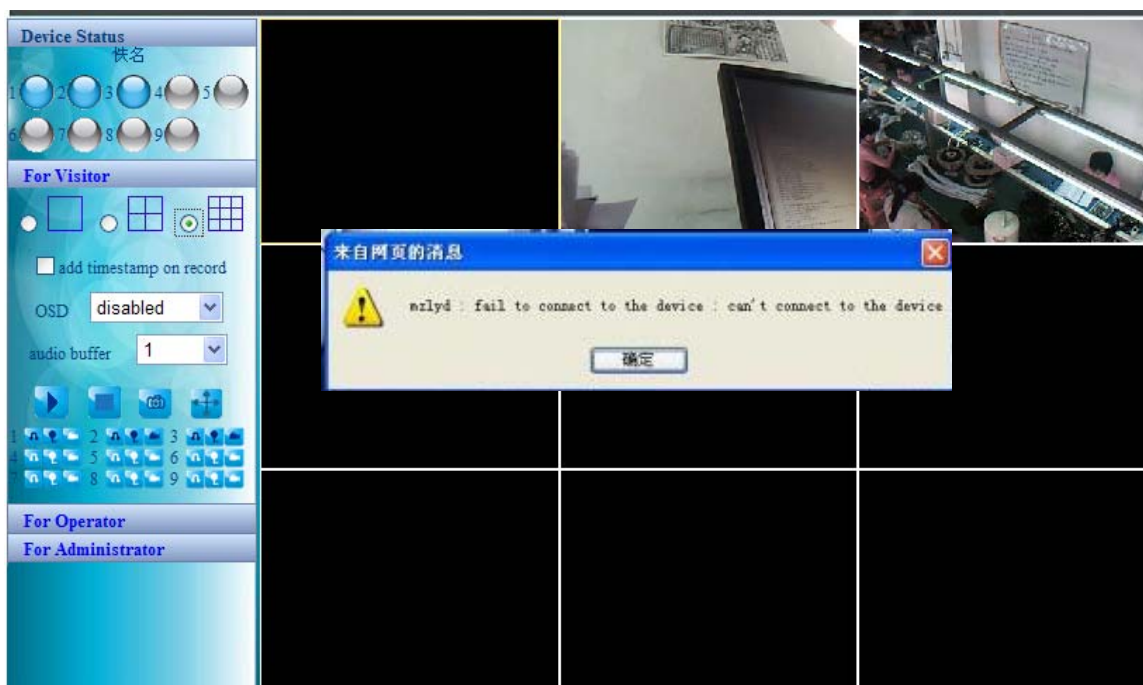
### 4.1.7 Why pop out “Fail to connect to the device...”?

This cue will come out when using several device.

Enter Multi-Device Settings page via administrator to check settings are correct.



When any device disconnected, the device status indicator will become yellow and pop out “Fail to connect to the device...”.



#### 4.1.8 The device already access to Internet, why can't be visited?

Below factors for reference:

1 ActiveX control didn't installed well(refer to:4.1.4).

2 Device http port was stopped by firewall or anti-virus software. Under this situation, pls change device port.

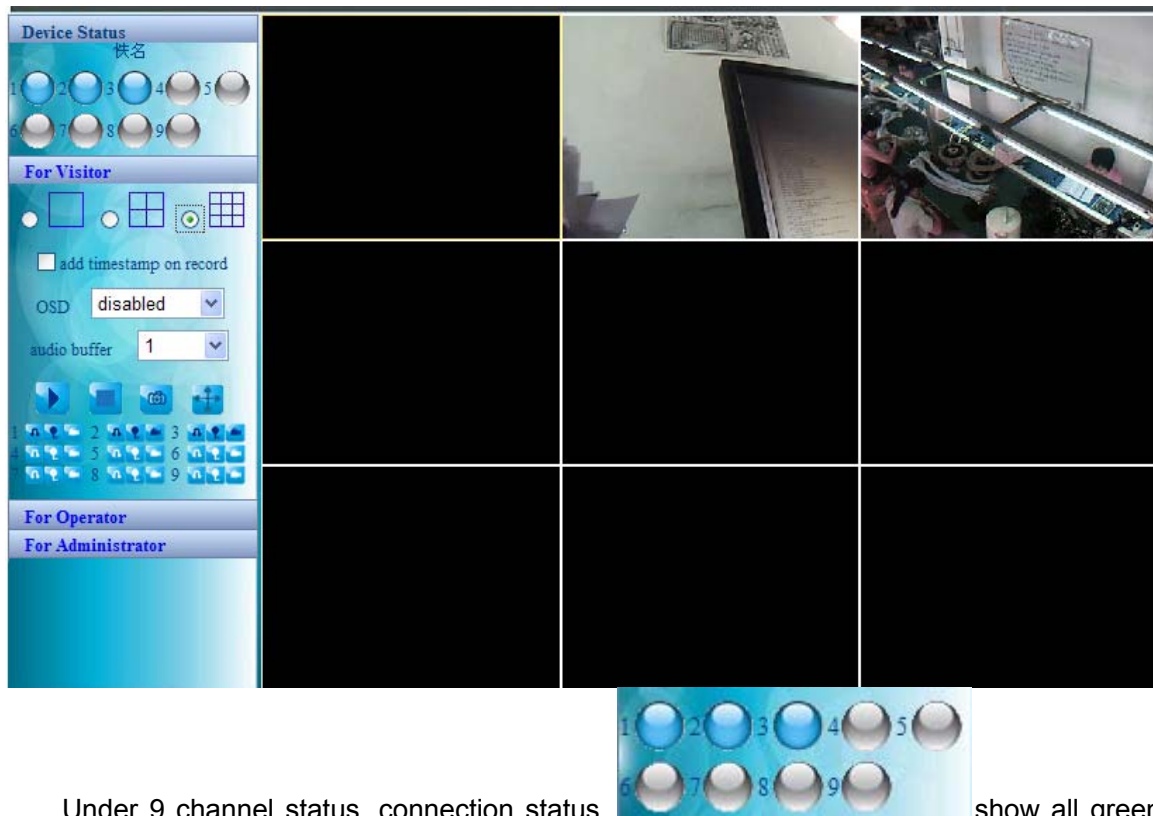
3 port isn't successfully mapped, two ways to work it out:

Enter related router setting page, enable router UPnP function, enter "UPnP Settings" page to enable UPnP and make sure UPnP status is succeed..

If related router has virtual mapping function, please add device ip address and port to mapping list.

4 IP address is dynamic when using ADSL. You need DDNS (refer to: 3.6 & 4.1.6) and make sure it mapping succeed.

Note: Device is accessed to Internet, why don't show images?

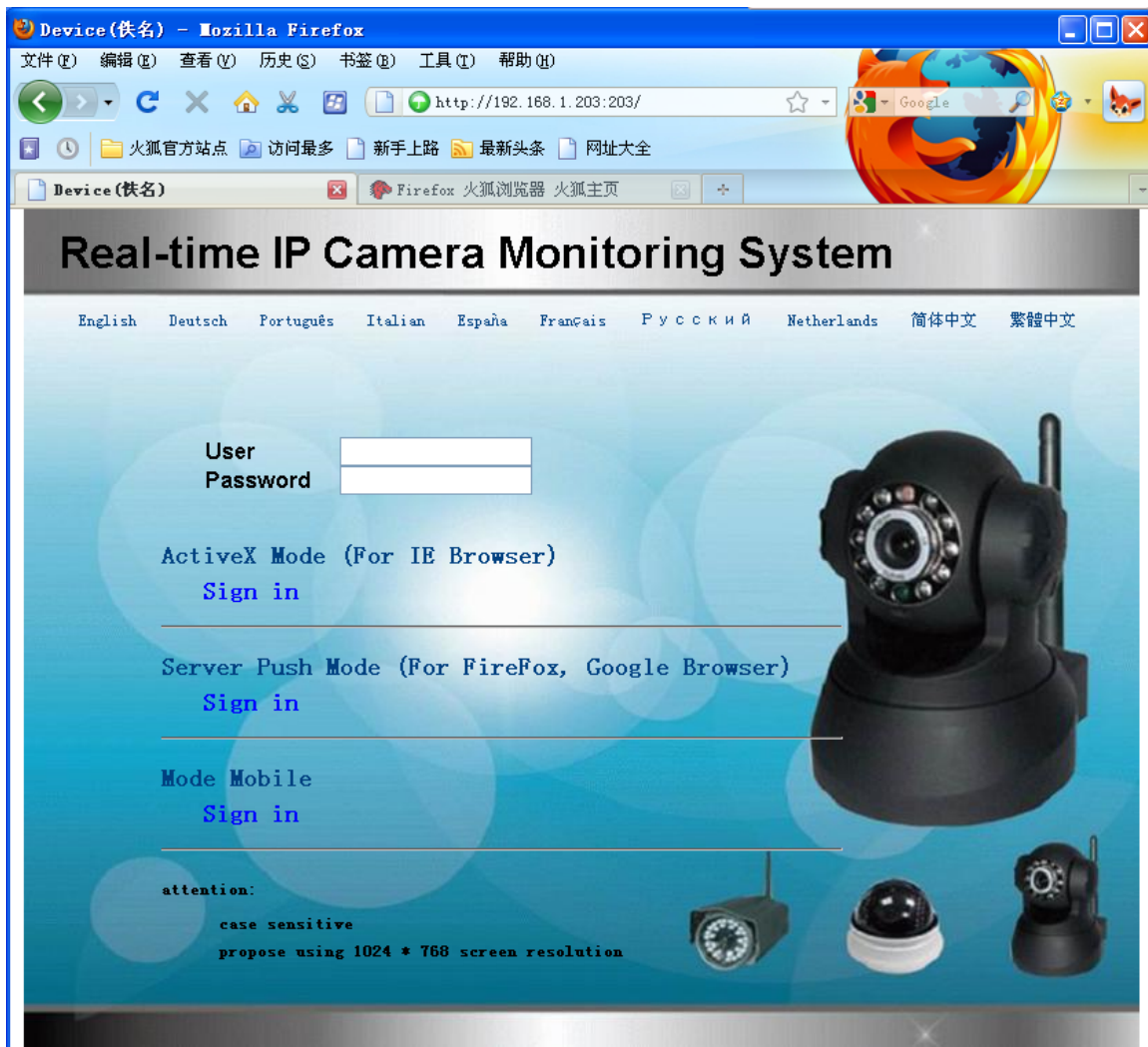


Under 9 channel status, connection status show all green color , but video windows don't show all images, it is bandwidth sources less, causing image don't display. It is normal.

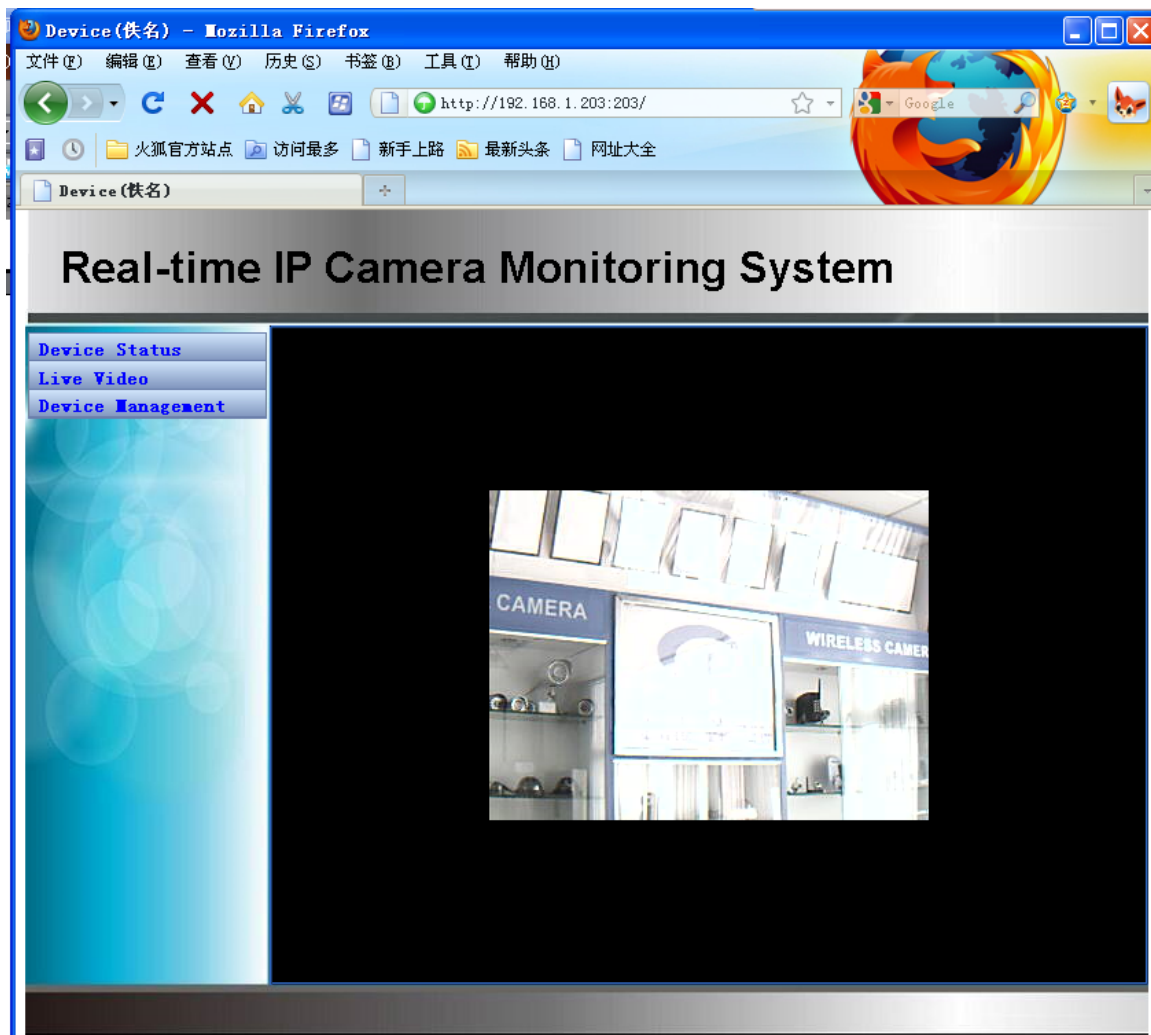
#### 4.1.9 Problem with FireFox browser

When login device via FireFox browser, why monitor page show in disorder and no image display? Refer to below picture:







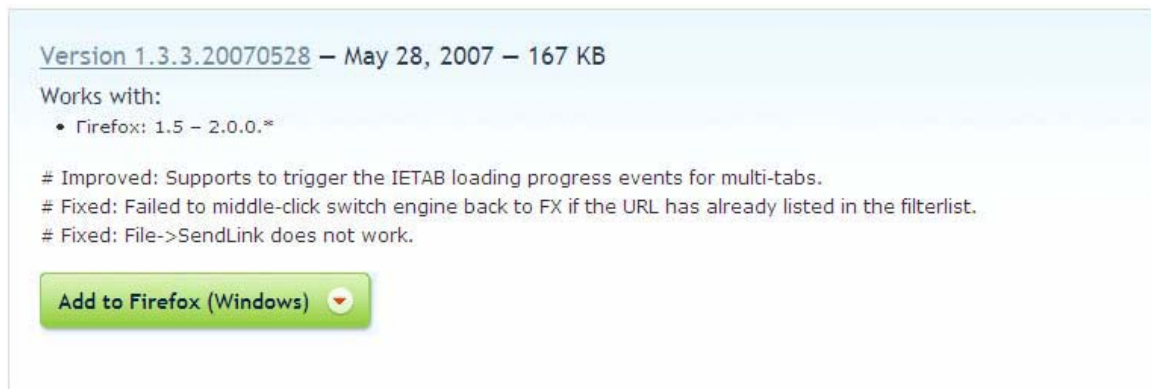


Because of the security problem, Firefox don't support ActiveX control. But its official part offer an IE Tab to support ActiveX control. You can visit below link via Firefox browser  
<https://addons.mozilla.org/en-US/firefox/addon/1419>

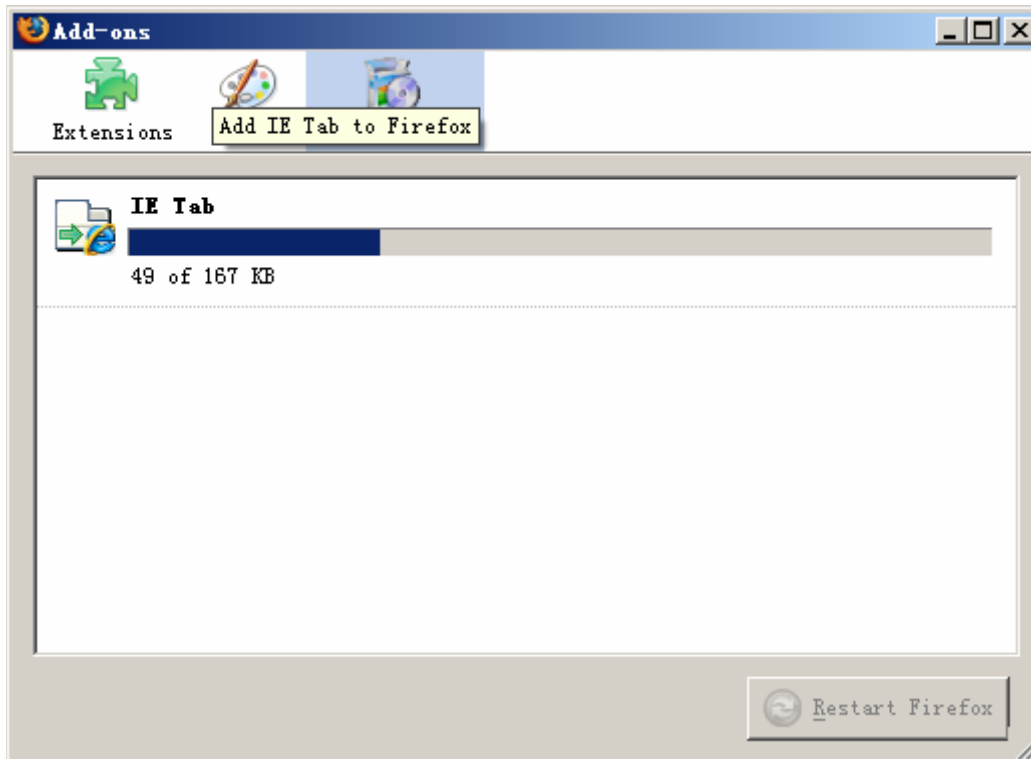
Download the controls, and choose the suitable browser version and install it.

We take Firefox 2.0.0.18 for instance:

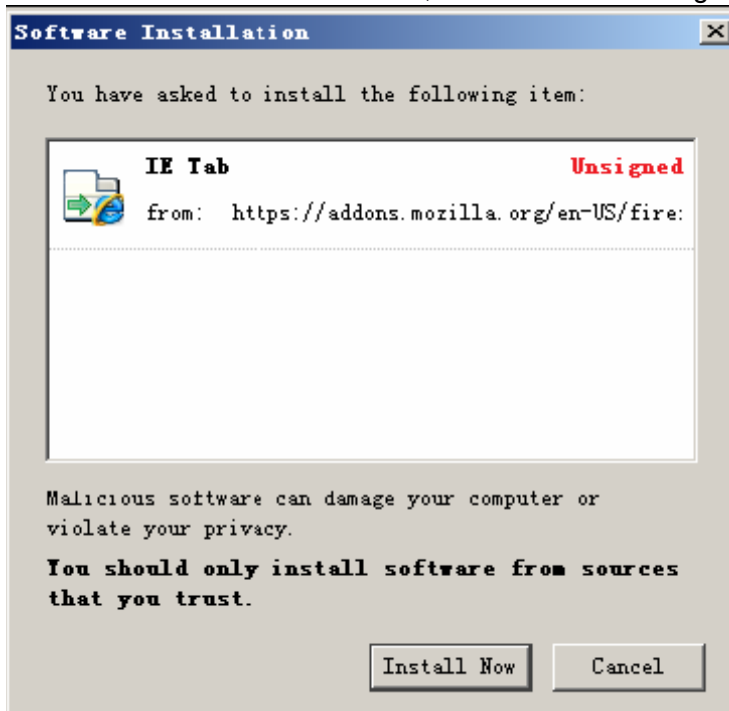
1、Click "Add to Firefox"



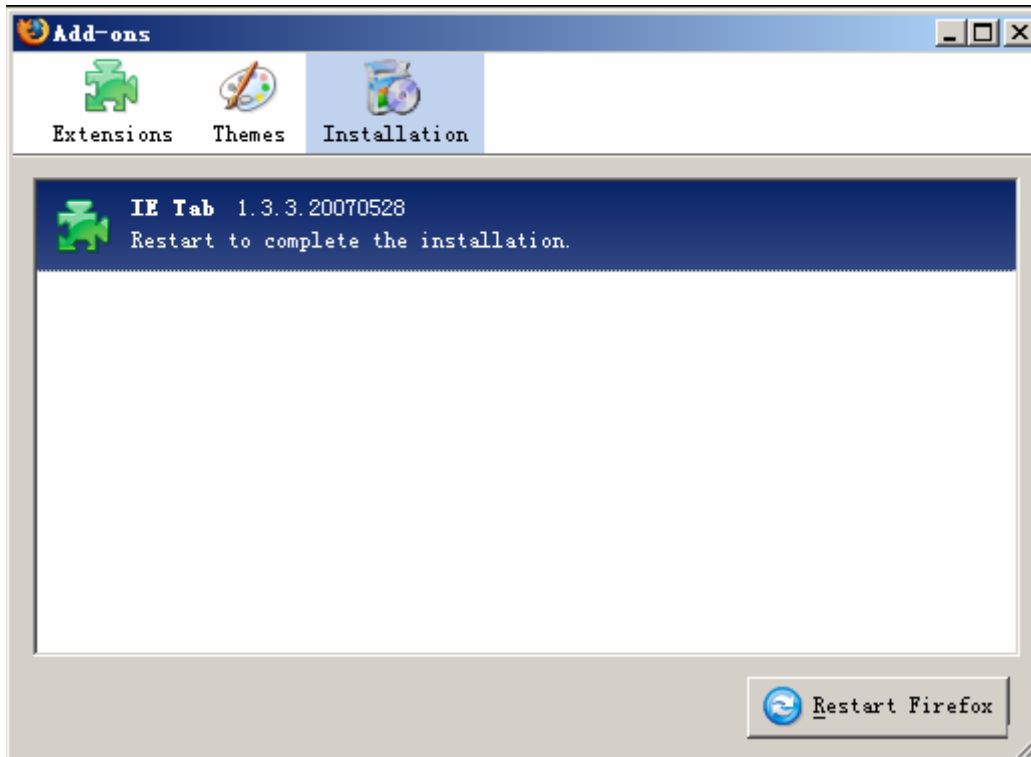
2、Firefox browser will automatically download it.



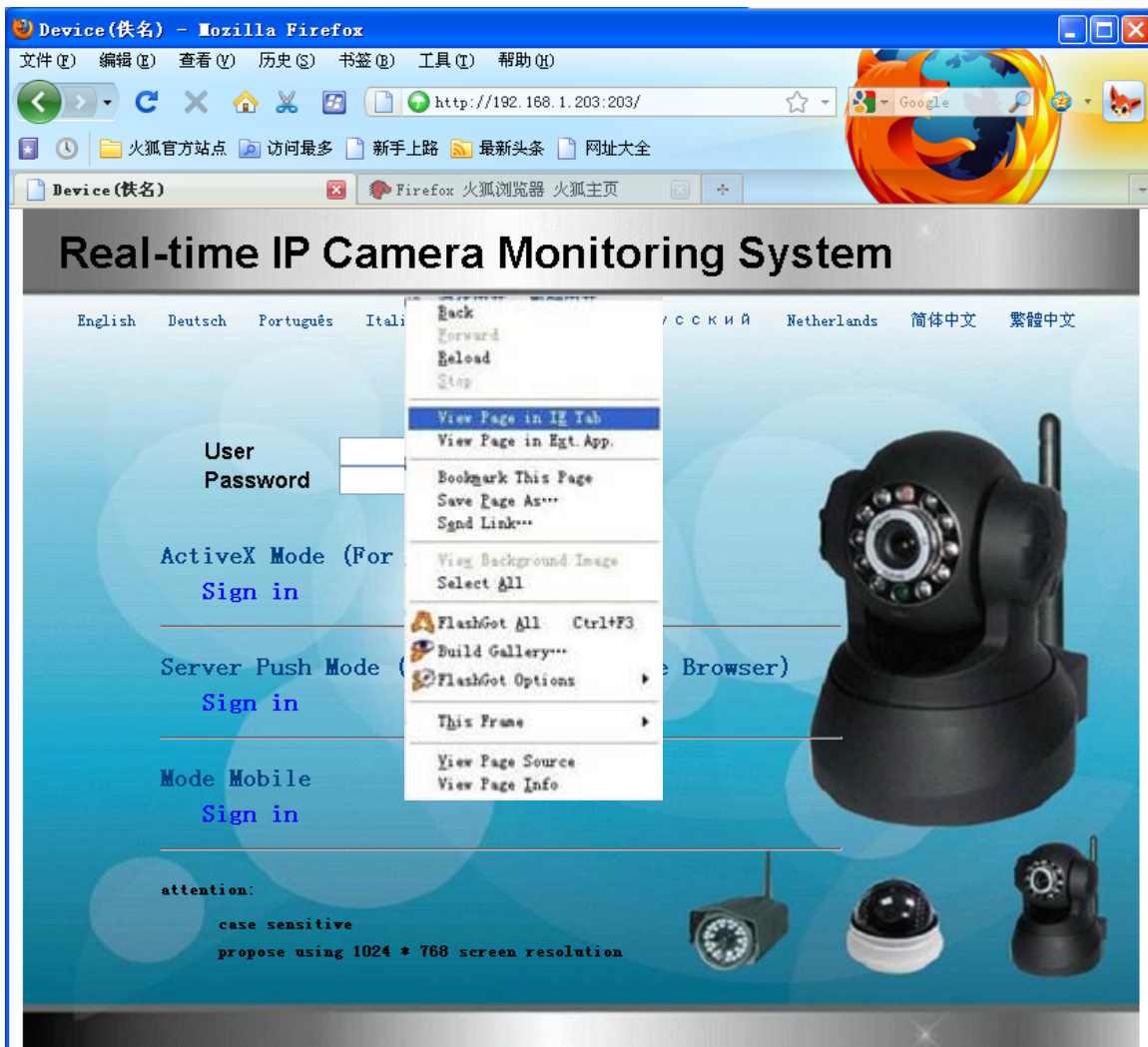
3、Next is to wait download finish, and installation dialog.



4、Click "Install Now" to start installation.



5、 Then click “Restart Firefox” to restart browser to complete installation. Login device and right click ActiveX control, you will see below webpage:



Click the selected menu, re-login device.

## 4.2 Default Parameter

Default network data:

IP address: 192.168.1.188

Subnet Mask: 255.255.255.0

Gateway: 192.168.1.1

DDNS: 202.96.134.133

## Default administrator: admin

Default administrator password: NONE

## 4.3 Product Specification

Project		IPCAM 01/IPCAM 02/IPCAM 03/IPCAM 04
Image sensor	Image sensor	1/4" color CMOS sensor
	Resolution	640 x 480 (3M pixel)
	lens(IPCAM 01/IPCAM 03/IPCAM 04)	f: 6mm, F:1.8 (IR lens)
	lens(IPCAM 02)	f: 3.6mm, F:1.8 (IR lens)
	Minimum illumination	0.5lux
Lens	Lens	Glass lens
	angel	90degree
Audio	input	Built in MIC
	compression	ADPCM
Video	compression	MJPEG
	frame	15fps(VGA), 30fps(QVGA)
	resolution	640 x 480(VGA), 320 x 240(QVGA)
	Image reversion	Vertical / horizontal
	Fresh rate	50Hz, 60Hz or Outdoor
	Picture quality	Brightness, contrast
Communication	Internet	RJ-45 port 10/100Mbps
	Protocol	HTTP,FTP,TCP/IP,UDP,SMTP, DHCP, PPPoE, DDNS, UPnP, GPRS
	Wireless	IEEE 802.11b/g
	Code	802.11b: 11Mbps(max.) 802.11g: 54Mbps(max.)
	Wireless safety	Support WEP / WPA / WPA2 encryption
Physical	Rotation(IPCAM 01)	H:120° & V: 72°
	Rotation(IPCAM 02)	H:270° & V: 120°
	IR light(IPCAM 01)	4 IR light, 5 meter
	IR light(IPCAM 02)	10 IR light, 5 meter
	Alarm input	One port
	Alarm output	One port
	measure	110(L) x100(W) x108mm(H)
	Gross weight	705g (color box size: 224x209x124mm)
	Net weight	400g( including accessories)
Power	current	DC 5V/2.0A
	consumption	5.5 W (max)
Condition	temperature.	0° ~ 55°C (32°F ~ 131°F)
	moisture	20% ~ 85% no frozen
	storage temperature	-10°C ~ 60° (14°F ~ 140°F)
	storage moisture	0% ~ 90% no frozen
System requirement	CPU	2.0GHZ or above (recommend 3.0GHZ)
	memory	256MB or above (recommend 1.0GHZ)
Display card	64M or above	
Operation system	Microsoft Windows 2000/XP/Vista/7	
Browser	IE 6.0, IE7.0 IE8.0 firefox2.0 firefox3.0 or other standard browsers	
Certificate	CE,FCC ,Microsoft MAC (device ID)	

Warranty	One year
----------	----------

## 5 Get Technical Support

Should you any question or problem not mentioned on manual, please visit our website or contact with us freely. Thanks!