

7-INCH-IN-ONE NVR

USER MANUAL

Please read this user manual carefully before use the product.



PREFACE

Thank you for choosing our company produced the NVR 7-inch-in-one NVR, hope our products will bring you security and convenience, we will be happy to provide you with the best service.

This manual applies to 7-inch-in-one NVR products that do operate a reference to this manual 7-inch 4-in-one network to do DVR, for example instructions, the different types of products will be slightly different configuration, please to prevail in kind.

This manual may contain technical inaccuracies or product features and operation of inconsistency or typographical errors, sincerely hope that you can view timely feedback to us, in future versions, we will be enriched and improved.

For your convenience, skilled operation of the product and use this product to better serve you, we recommend that you carefully read the contents of this manual

Chapter 1 Introduction to the environment.....	4
and product applications.....	4
1.1 Application Environment.....	4
1.2 Function Introduction.....	4
1.3 Interface Introduction.....	6
Remote control instructions.....	7
1.4 Installation and Connection.....	8
1.4.1 Installation of HDD (SATA interface).....	8
1.4.2 Connection.....	9
Chapter 2 Basic Settings.....	9
2.1 Log in and setup.....	9
2.2 HDD Optimize.....	9
2.3 Time settings.....	10
2.4 Channel Name management.....	10
Chapter 3 Recording function.....	10
3.1 Recording settings.....	10
3.2 Recording playback.....	12
Chapter 4 Network Setting.....	12
4.1 Advanced Settings.....	13
4.1.1 Email settings.....	13
4.1.2 DNS settings.....	13
4.1.3 DDNS settings.....	14
4.1.4 PPPoE Settings.....	14
4.1.5 UPnP Settings.....	14
Chapter 5 Alarm Setting.....	15
5.1 Motion Detection.....	15
5.2 Alarm output.....	17
5.3 Abnormity.....	17
5.4 Digital Alarm.....	19
Chapter 6 Add Remote Device.....	20
6.2 Add Device.....	20
Chapter 7 Client-Side Operation.....	21
7.1 IE-Side Setting.....	21
7.2 Login.....	22
7.3 Web client-side.....	23
7.4 Web client-side remote operation via WAN.....	23
Chapter 8 Mobile phone Monitoring.....	24
Appendix:	25

Chapter 1 Introduction to the environment and product applications

1.1 Application Environment

Hardware environment

- ◆ Power: 12V DC power supply;
- ◆ Connection: Cat 5 cable, standard AV video cable

- ◆ Temperature: operating temperature should be maintained at between -10 °C ~ 55 °C, hot or cold, or more than the operating temperature limits may cause the device to work properly, it is strictly prohibited equipment installed above the heat source.
- ◆ Humidity: Humidity should be controlled at 10% to 90% range, not the equipment exposed to rain or humid environment, moisture can damage the internal components, do not install the equipment near water
- ◆ Ventilation: the equipment installed in a well-ventilated place, pay attention to dust;

Software Environment

- ◆ Operating System: Embedded LINUX system;

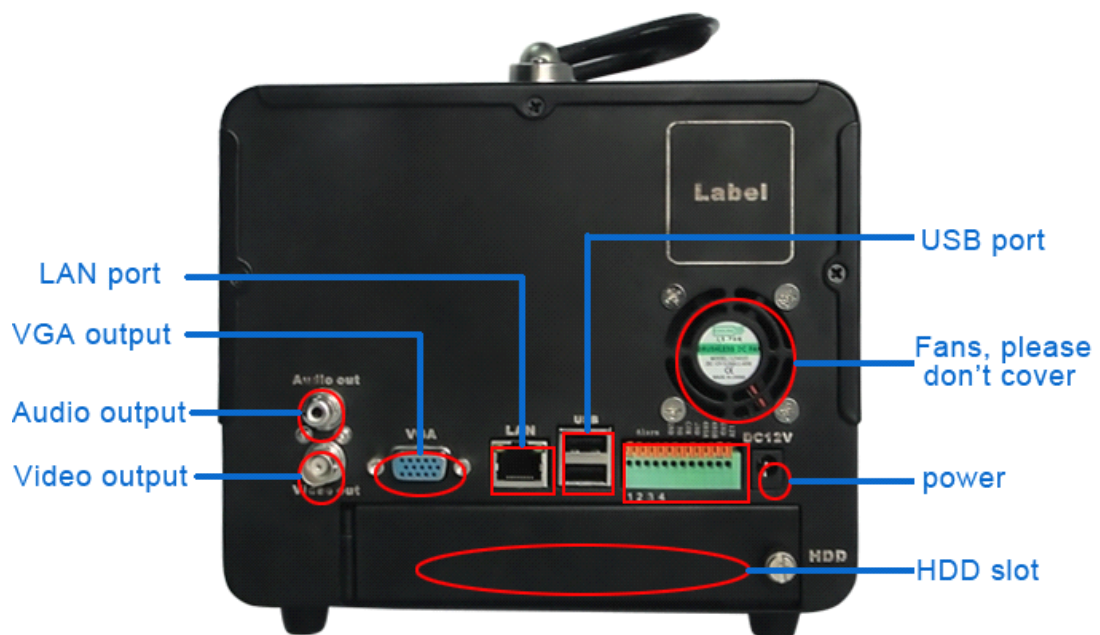
1.2 Function Introduction

- ◆ 4 channel digital video input full D1/720P real-time video;

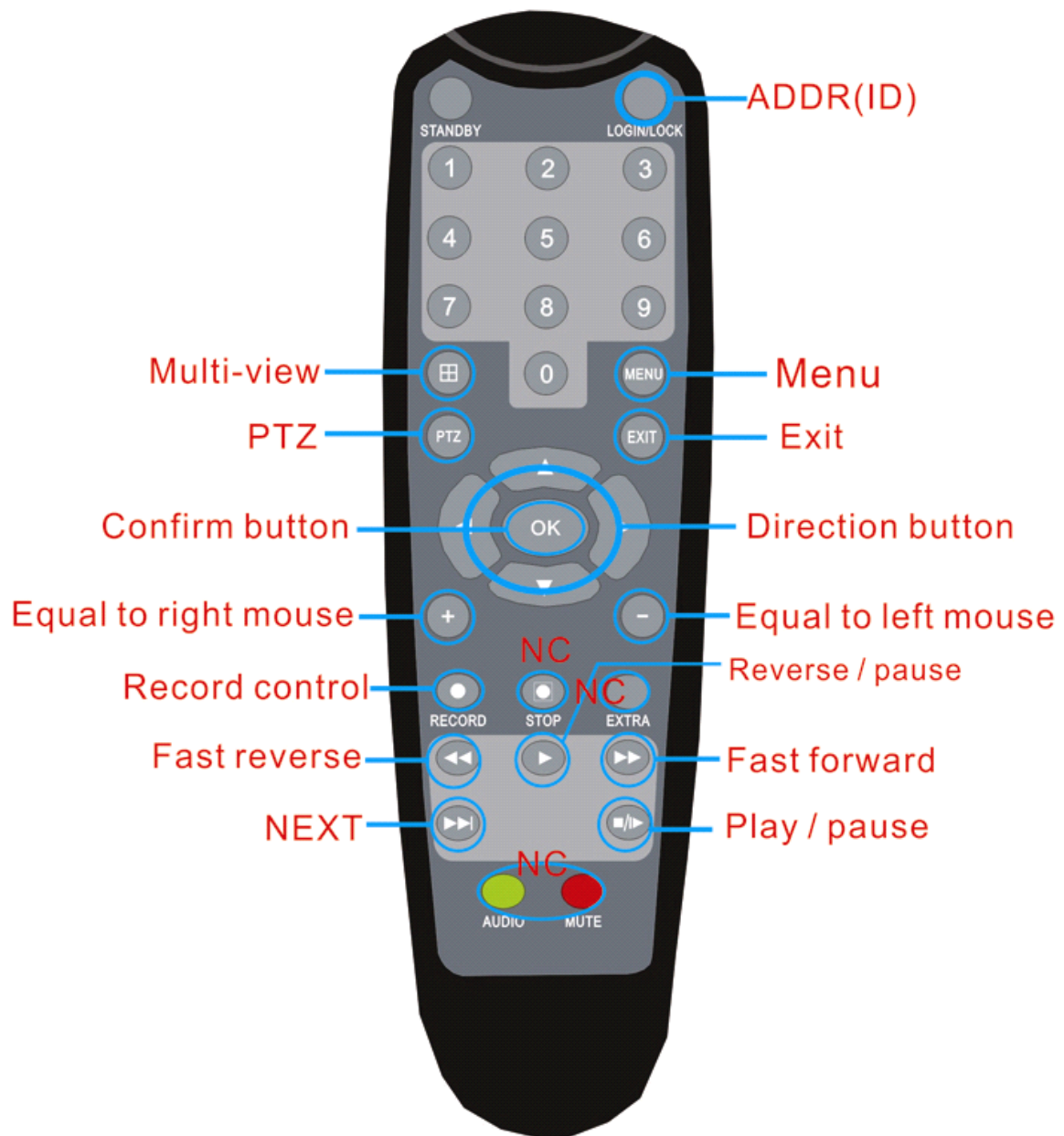
- ◆ 1 channel VGA and one BNC video output
- ◆ Support RS-485 interface, control the PTZ, scalable, multiple decoding protocol;
- ◆ Support 4 channel playback simultaneously recording

- ◆ Support PAL / NTSC video signal input
- ◆ Support audio talkback function (built in high sensitive micro phone)
- ◆ Support remote real-time monitoring of mobile phones (Windows Mobile, Symbian, iphone, Android, Black Berry);
- ◆ Supports multiple DDNS (peanut shells, 3322, dyndns)
- ◆ TB level support large-capacity hard disk
- ◆ Supports mouse drag local area digital zoom
- ◆ Multi-level user rights management, to ensure system security
- ◆ Through the USB interface (such as ordinary U disk and removable hard disk, etc.) for backup;
- ◆ Client computer can be downloaded through the network back up files on the hard disk;
- ◆ Store data in a proprietary format, can not be tampered with data to ensure data security.
- ◆ Parameters can be set through the WEB page, view real-time video and audio signals, see the DVR status;
- ◆ You can control the PTZ network camera rotation and control parameters, such as aperture size, focal distance, etc.;
- ◆ Variety of recording modes: manual, alarm, motion detection, video block, etc., and have a pre-recorded feature;
- ◆ Video playback you can display the exact time the event occurred
- ◆ Single screen full screen playback option for any region in the enlarged region of video playback;
- ◆ Can be connected to the infrared, smoke detectors and other alarm input device as an alarm;
- ◆ Pre-recording function with alarm, the alarm can be pre-stored video data in advance, pre-recording time can be set;

1.3 Interface Introduction



Remote control instructions



1.4 Installation and Connection

1.4.1 Installation of HDD (SATA interface)

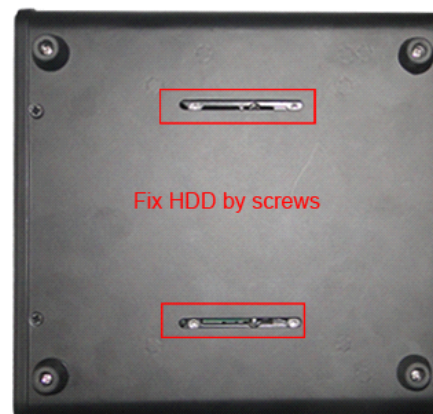
Open screws of the back pannel,put the HDD in the slot till the bottom.Close pannel.Show in picture

Open screws of HDD port at back panel

Insert HDD till the end, and close back panel



In order to prevent HDD fall off,we have screw hole at the bottom to fix it



1.4.2 Connection

Connect power it will automatically start device after rear panel connection finished. Please press screen switch to start device if turned off screen in last operation.

Notice: In order to prevent DVR please do not shut down power directly. Can click Main menu>management tool > shut down device

Chapter 2 Basic Settings

2.1 Log in and setup

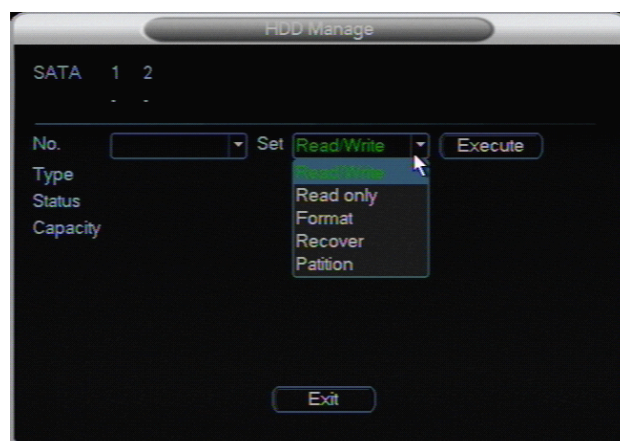
After log in, you can do settings by mouse, button and remote controller. First system will notice log in. Default user name is : admin and guest, password is 123456 .

Users can manage by click Main menu>System settings>Account management. Show in picture:



2.2 HDD Optimize

Please format disk when first time using. Then it can optimize HDD installation. Settings: Main menu>Management>HDD management. Show in picture:



Also you can set HDD types

Read only and Read write can be searched. Only read write can install file. When recording please make sure to set in read write type.

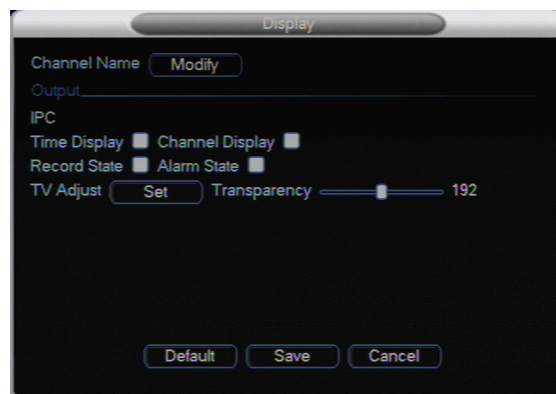
2.3 Time settings

Main menu>System settings > general settings



2.4 Channel Name management

Main menu>System settings>Display



Chapter 3 Recording function

3.1 Recording settings

Main menu>Recording function>Schedule

Default recording mode is continuous 24 hours recording. Enter schedule to do

settings.

【Channel】 Select channel to do settings.All channels please select FULL;

【Pack duration】 select recording time;

【Pre-record】 set pre-record time;

【Record control】 click ● start settings.Option of schedule,manual, close;

【Date】 select date to do settings.For all please select FULL;

【Schedule】 recording types in different time of channels. Select ■ for normal,motion detection,alarm.Can select multiple channel.6 time schedule option.Same recording status in different time can be same,time range: 00: 00 ~ 24: 00.Click save after settings finished;

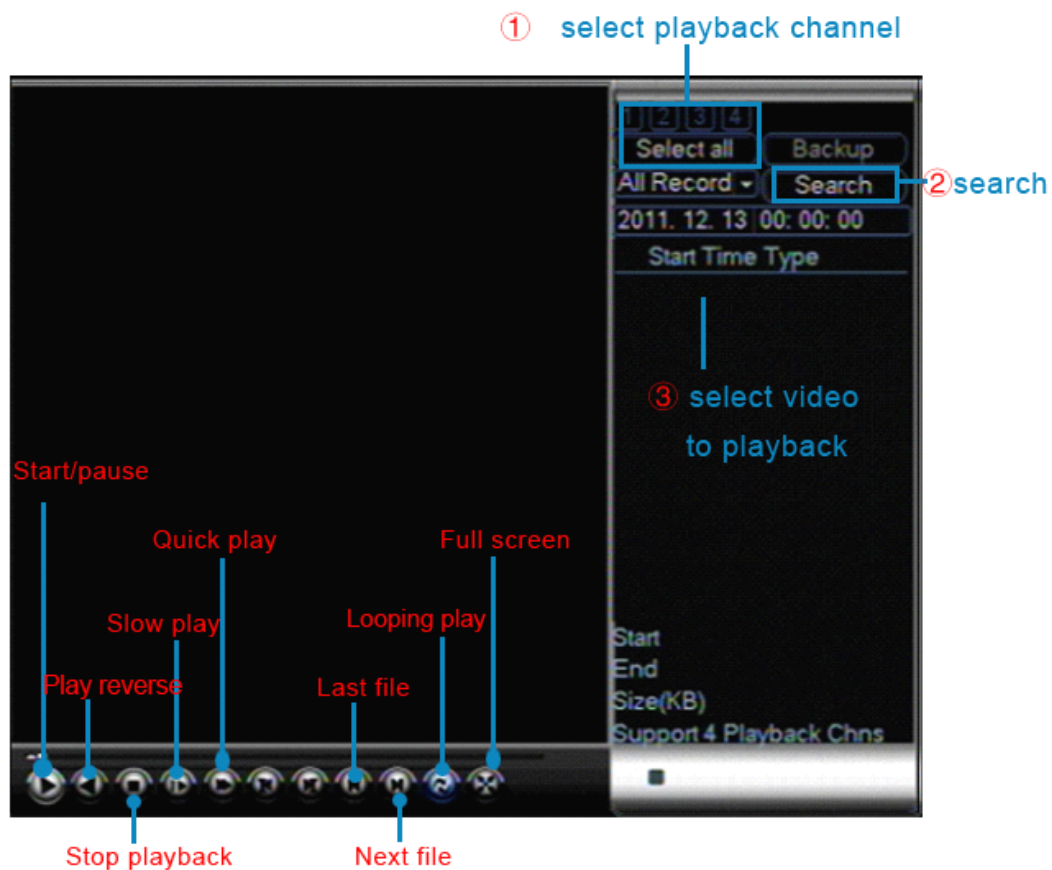
Quick setup

You can copy settings to other channel.Like: after setting channel 1 click copy button and turn to channel 5 to paste.

Notice

After copy datas to other channel.The copy,paste and default function still workable after adjust parameters.Difference is when paste,you can only copy or paste same type settings.

3.2 Recording playback



Chapter 4 Network Setting

Main menu> ystem settings> Network settings:

【IP address】 default IP address is : 192.168.1.108;

【 DHCP 】 ☐ for dynamic

ip address distribution ;

【TCP port】 3G phone
port,default is 34567;

【HTTP port】 WEB
port,default is 80;

【UDP port】 default is
37778;



【Netowrk user connection】 between 0~10.No network user connection when select of 0 ,max is 10;

【Network transmission QoS】 ■ for selection. 3 Mode of: quality first, fluency first and self-adapt

【 LAN download 】 ■for selection of transmission first (remote view and download).Local view with effect

4.1 Advanced Settings

4.1.1 Email settings

【SMTP server】 SMTP server for configuration.Like: smtp.xxxx.com

【Port】 usually default of 25

【User name】 email address of user

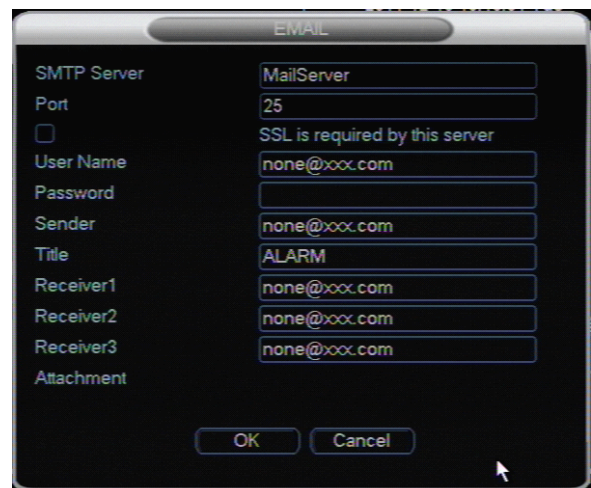
【Password】 email password

【Sender】 email address of sender

【Title】 email title after alarm

【Receiver】 receiver's email address

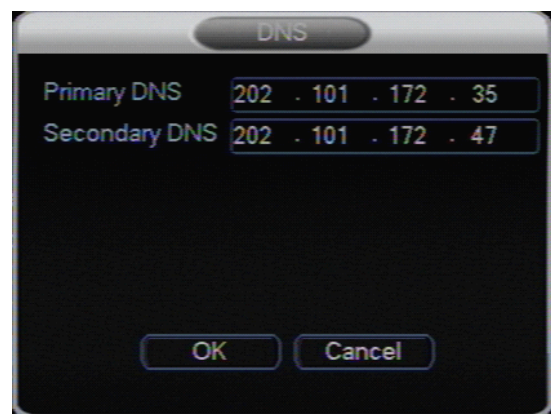
Notice: if it is faux function email, when fill in user name please add suffix(like: xxxx@yyyy.com).Otherwise,do not need to add suffix(like:xxxx)



4.1.2 DNS settings

【 Primary DNS 】 according to local DNS address to set up;

【 Secondary DNS 】 according to local DNS to set up;



4.1.3 DDNS settings

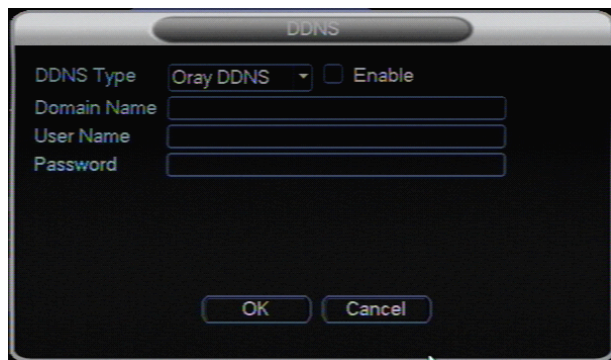
【DDNS type】 DDNS service type;

【Enable】 Select invert to enable;

【Domain name】 Bonding domain name;

【 User name 】 user name for applied;

【 Password 】 password for applied;

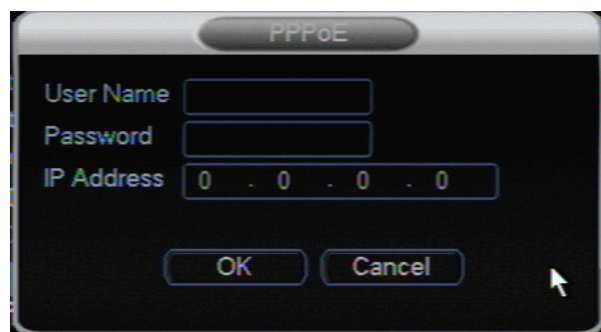


4.1.4 PPPoE Settings

【User name】 ADSL user name;

【Password】 ADSL password;

【IP address】distributive IP address after successful dial;



4.1.5 UPnP Settings

【External HTTP Port】 The external http port mapping in router as the same as the device http port;

【 External TCP Port 】 The external TCP port as the same as the device TCP port.



Chapter 5 Alarm Setting

5.1 Motion Detection

Main Menu>Alarm>Motion Detection

Through analysis video image,start dynamic detection alarm when the system detects preset sensitive mobile signal come out



【Channel】 choose the channel for setting dynamic detection area;

【Enable】 function start switch,anti-display■means choose the one;

【Type】 According to the type of alarm options can be set normally open or normally closed;

【Schedule】 choose date of the defended setting,work day and Free day options available,6 periods of time options for defended setting,time setting with no repeat needed,display defended time range as straight line image,defended setting time can be quickly copied to the other dates;



【go shaking】 in the condition of dynamic detection,to set time range of shaking function,time range between 0-600s;

【Alarm out】 when the dynamic detection begin,start linkage alarm output interface's outside connected equipment,alarm output channel available,can be chosen again;

【Alarm duration】 when dynamic detection ended,output a period of time delay paused,time range between 10-300 s;

【Show Message】 Anti-display■means screen hint allowed,when alarm signal happen by setting the linkage motion displayed in the screen;

【Send Email】 Anti-display■means be chosen,when alarm signal happens by setting send e-mail to the specified address;

Mail address which sent by alarm is presetted e-mail address of chapter 4 ,for detailed setting procedure please read the chapter 4,Network setting > Advanced Setting > Email setting

【Record CHN】 Anti-display■means linkage alarm video start,when alarm signal happens to set video start channel, meanwhile, choose detection video in video setting. To choose lasting video in video control;

【PTZ Act】 That enabled the anti-PTZ linkage was ■, PTZ linkage channel can be set to achieve the preset point called the point between the cruise, patrol track (where the PTZ control and preset settings such as cruise trajectory parameters);



【Post-Record】 That when the motion detection delay at the end of an extended period of time to stop recording, the time in seconds, the range of 10 to 300;

【Buzzer】 Buzzer enable option(it's closed by default)

【Tour】 Anti expressed alarm when significant ■ round robin, round robin can be set to start the channel.

5.2 Alarm output

Main Menu> Alarm> Alarm Output

【 Alarm Type 】 Two types alarm, "all" "1" means 1 Channel output;

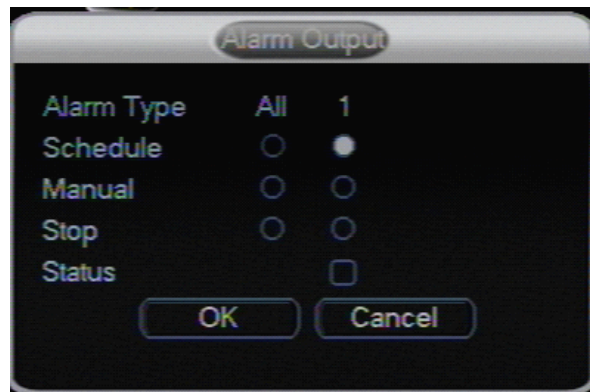
【 Schedule 】 was that the anti-selected, select the "full" • 4-way while the startup configuration, said alarm output,

select "1" •, "2" •, representing 1 way, 2-way configuration alarm output;

【 Manual 】 was that the anti-selected, select the "full" • that there are always 2-way alarm output, select "1" •, "2" •, representing the first way, there is always the first 2-way alarm output;

【 Stop 】 to turn off the alarm output

【 Status 】 That the current state of alarm output device

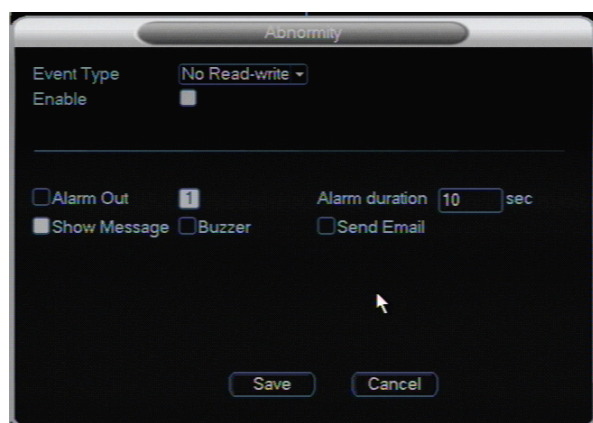


5.3 Abnormity

Main Menu> Alarm> Abnormity

Exception handling functions, as shown, select the type of configuration anomalies and linkage action. Enable the "Enable switch", when the abnormal event, the system can be linked alarm output, the screen prompts, send E-mail and other means.

【 Event Type 】 Abnormity type can be set: No Read.Write Disk, Disk



Error, Disk No Spare, Network Disconnection, IP Conflicted;

No Read Write Disk: Hard disk recorder not connected with hard disk or hardware problem, system do not find hard disk.

Disk Error: hard disk problems, system failed to recognize hard disk

Disk No Spare: no free storage space for hard disk; (after selected interface tip for typing minimum number-percentage of left space).

Network Disconnection: hard disk recorder network connection off line or network connection error

IP conflicted: hard disk recorder network connection set fix IP address, there are other same device setting IP addresses in network, IP conflict occur

【Enable】 function start switch, anti-display ■ means selected

【Alarm output】 Start linkage alarm output interface's outside connection device when exceptional incident occur, alarm output channel option available, can be selected again

【Alarm duration】 that when the alarm output end of the input and output for an extended period of time to stop, the range of 10 to 300 seconds;

【Show Message】 that allows the anti-screen display ■ Set an alarm signal when the screen has a joint action;

【Send Email】 anti-display ■ means selected, alarm signal occur by setting to send e-mail to specified address,

Mail address which sent by alarm is presetted e-mail address of chapter 4 ,for detailed setting procedure please read the chapter 4, Network setting>Advanced Setting>Email setting

5.4 Digital Alarm

Menu > Alarm > Digital Alarm.

【 **Channel** 】 choose the channel which will set digital alarm;

【 **Enable** 】Function enable option,
■ means selected;



【 **Schedule** 】 select Schedule time, working day and off working option, 6 schedule can be set. Time setting can not be recovered. straight-line graph indicate each schedule, and the setting can be copy to set other schedule;



【 **Alarm out** 】Digital alarmed link to

external output alarm device, the alarm output channel can be selected;

【 **Alarm duration** 】 after finished digital alarm, alarm output will be stopped after a period time.;

【 **Show message** 】"■" means allow hints, setting the display screen with linked activities when alarmed;

【 **Send E-mail** 】 "■" means selected, setting to send email to appointed mail address when alarmed;

【 **Record CHN** 】 "■" means link alarm enabled. Setting the enabled channel when alarmed, make sure select Motion detection in "Record", select Manual in Recording control;

【 **Post- record** 】 when the video cover stopped, the recording will be stopped after a duration time, this time range is 10~300 seconds;

【 **Buzzer** 】 Buzzer enable option(it's closed by default);

【 **Tour** 】 "■" means rotate when alarmed, the rotate channel can be selected.

Chapter 6 Add Remote Device

6.1 wireless setting of IP cameras

Connect the IP camera, enable UPNP, and make IP port mapping in router.

6.2 Add Device

Main menu > Advanced >

Digital Channel

【 **Channel** 】 choose the channel which need setting digital channel.



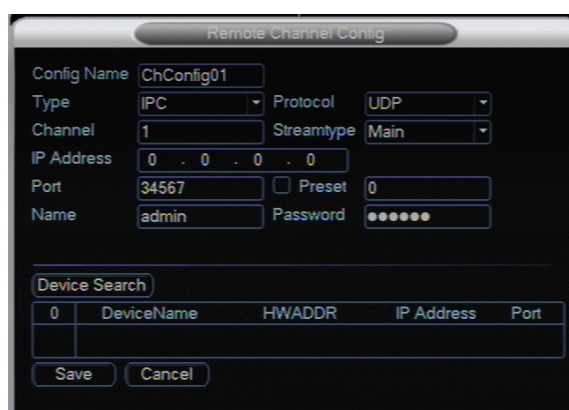
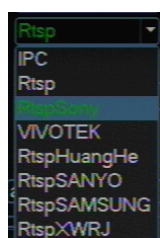
【 **Enable** 】 Enable key, “■” means selected.

【 **Decode Policy** 】 Choose the Decode Policy in digital channel, there are 5 options(Most Real Time, Real, Default, Fluency, Most Fluency), this can be chose according to it's network and real status.

Double click an option in config list to set remote channel config.

【 **Config Name** 】 show selected config name.

【 **Type** 】 choose RTSP



【 **Protocol** 】 UDP/TCP protocol can be selected.

【 **Channel** 】 choose the channel of remote device.

【 **Streamtype** 】 choose the stream way of remote device, Main or Assist stream.

【 **IP address** 】 set IP of remote device, input the device IP which need to connect, the IP which map to router.

【 **Port** 】 The port of remote device, default port is 34567;

【 **Preset** 】 Preset of remote device.

【 **URL** 】 input H.264

Click “Save”, NVR will get the IP camera monitor picture via network.

Chapter 7 Client-Side Operation

7.1 IE-Side Setting

Please make sure the IE browser is IE6.0 or above, and installed Directx9.0 or above version

◆ If IE browser blocked ActiveX download, please do as below;

1.Open IE browser, click “tool”, the followed window will appeared;

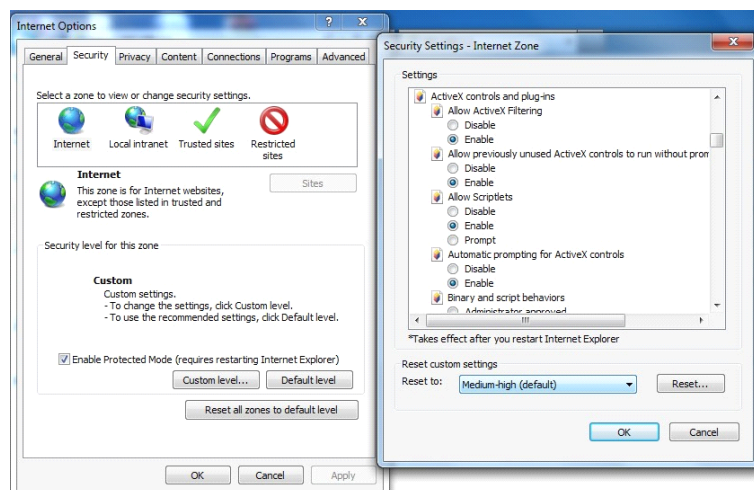
2.Click “Internet proper” , and then choose “Security”;

3.Click “custom level” the window appeared, please set enable all ActiveX refer to the picture;

4.Click “OK” to finish the setting.

◆ Block other plug-ins, close firewall and all anti-virus software.

Note: when the first time login DVR, after finished setting and DVR work



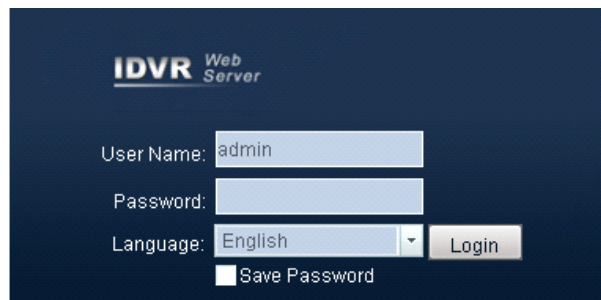
well, in order to keep IE security please recall “Internet safety level” to default safety level or other self-defined level.

7.2 Login

LAN: input IP address and port of the device in IE browser(default IP: 192.168.1.108:80), example: <http://192.168.108:80>, enter in the Login interface.

If this is the first time Log in via IE, it will indicate plug-ins must be installed.

Login User name and password is same with client-side. Default administrator user name of the DVR is admin, password:123456, please change user name and password in time.

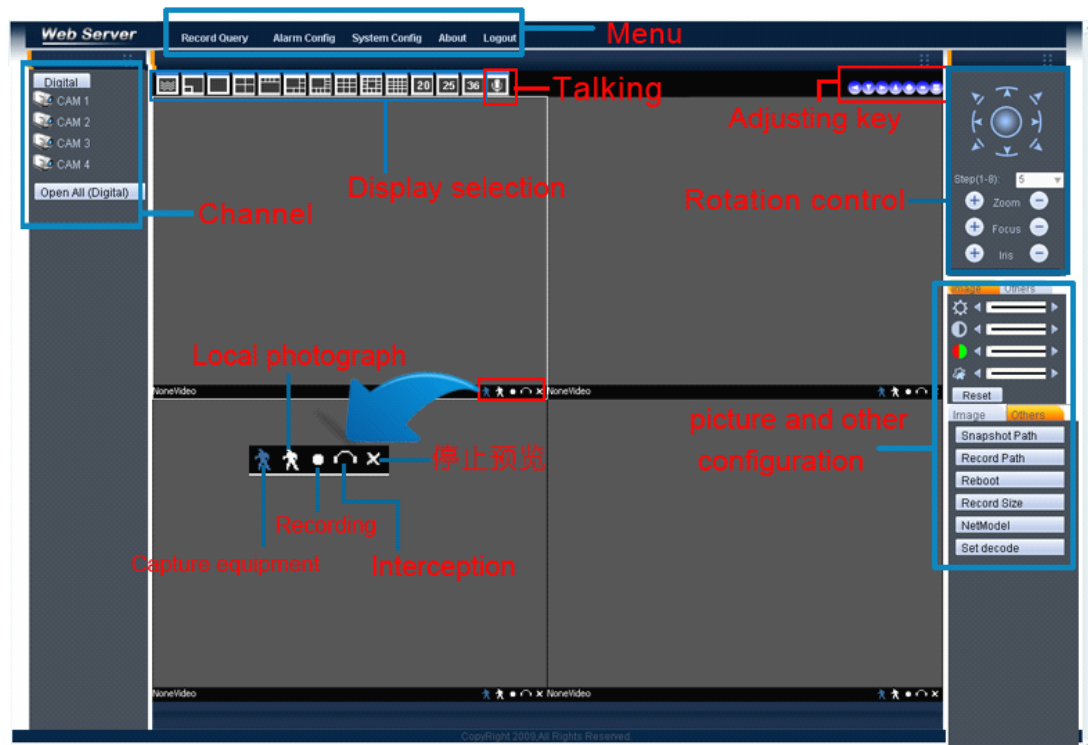


Note:

1.According to connection introduction in user manual and make sure DVR access to network.

2.Set IP, subnet and gateway for PC and NVR, (if there with a router, the gateway and subnet must be set), the NVR network configuration please refer to Chapter 4.

7.3 Web client-side



7.4 Web client-side remote operation via WAN.

Port mapping in router, steps as below:

1.Type in 192.168.1.1or 192.168.0.1 in IE browser Input User name and password in the appeared window, the default user name and password are: admin, then add server port of the IP in router“Forwarding rules” >“Virtual server”, please refer to the picture(right picture).

Virtual Servers					
ID	Service Port	IP Address	Protocol	Status	Modify
1	203	192.168.1.188	ALL	Enabled	Modify Delete
<div><div>Add New...</div><div>Enable All</div><div>Disable All</div><div>Delete All</div></div>					
<div><div>Previous</div><div>Next</div></div>					

2.DDNS setting, set DDNS and user name, password you already registered in network configuration>DDNS setting. After finished configuration, input DDNS address from IE browser, remote operation via internet will be realized.



Operate interface same with web interface in LAN.

Chapter 8 Mobile phone Monitoring

Take the Android mobile phone as a sample:

1.Copy mobile phone software to mobile phone and install it. Open network connection and software.

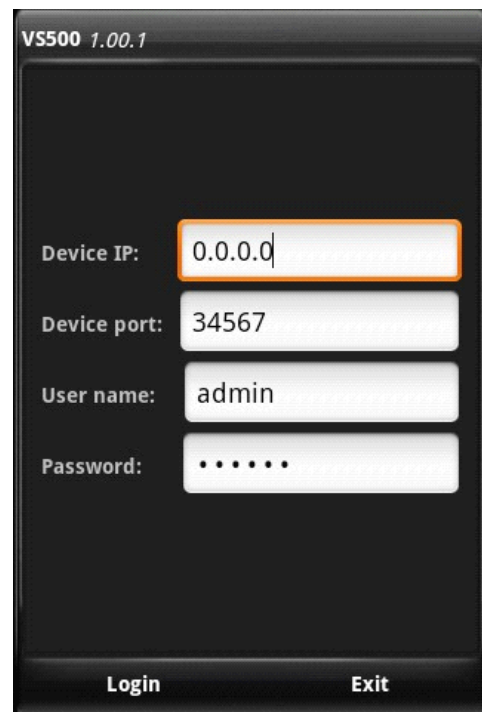
2.Access via mobile phone

Input the DDNS domain name in “Device IP”;








Port is the TCP port in network configuration;





User name and password is same with the device user name and password

Choose channel to monitor each camera after log in.



Appendix:

General RTSP configuration for IPCAM access				
NO .	Type	URL	Product model	Brand
1	RTSP	H264		
2	IPC	user=admin&password=123456&id=1&type=1 user: for user name, password: for password id for channel, start from 1 Type for stream type, 1 for sub stream, other value for main stream		
3	RTSP	admin:admin@chl-s1		
4	RTSP	live.sdp		
5	RTSP	Main stream: media/video1 Sub stream: media/video2		
6		Main stream: av0_0&user=admin&password=admin Sub stream: av0_1&user=admin&password=admin		
7		Main stream: snl/live/1/1 Sub stream: snl/live/1/2		
8	RTSP SAMSUNG	admin:4321@profile2/media.smp admin for user, 4321 for password, profile2/media.smp profile2/media.smp for these two model URL suffix.	SNB5000 SNB3000	

		admin:4321@h264unicast admin for user name 4321 for password h264unicast is the URL suffix of SNP337	SNP3370	
		h264/media.smp	SNC-B2331/SN C-B5368 SNC-B2335/SNC-B5 399 SNB-2000/SND-308 0 SNB-3000/SNV-308 0	
		h264/media.smp	SNB-5000/SND -5080 SNV-5080/SNV-312 0 SNP-3120V	
		h264unicast	SNP3370	
9	RTSP	admin:admin@VideoInput/1/h26 4/1		
10	RTSP	channel1		
11	RTSP	Main stream: 0/888888:888888/main Sub stream: 0/888888:888888/sub		
12	RTSP	url: blank		
13	RTSP	Port: 8557 url:h264		
14	RTSP	url :blank		