

I. Software Download

1. Pls search the "SmartHomeCloud" on Google Play for the Android software and on APP Store for the IOS software, or scan the QR code to download.



Android



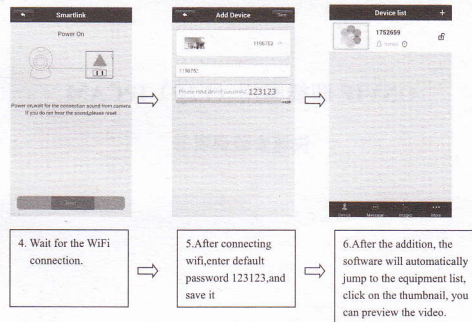
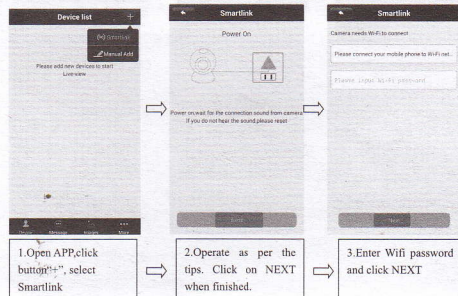
IOS

2. Open APP, register the user and login APP.

II. Network Configuration

1. Power on the IP camera and waits for starting. (It will have the sound tip if the IP camera starts).
2. Open and login the software, using the smartlink to connect Wifi settings.

Tip: Pls ensure the wifi that you set can connect to the mobile phone or iPad normally.



Warning: Please modify the camera management password when finishing the first time adding.

Modify way: click device name-select setting-safety setting-manage password-modify password

3. When you use the RJ45 cable connect the doorbell, choose the manual addition, and then you can finish as per the tips.

III. Download software

Detailed operating instructions, the PC client software, video playback software, please download at www.ipjwmp.com. CMS client, Local login: user name: admin, password: none; Remote login: use mobile phone APP register user name and password.

