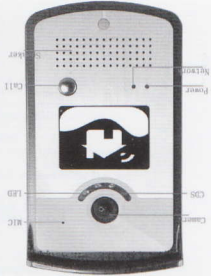


I. Hardware

1. Front Panel



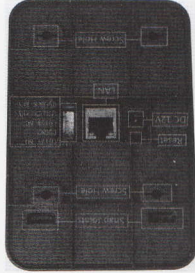
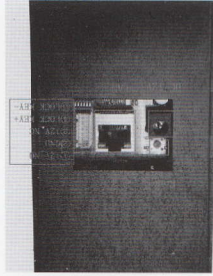
Power: Power Light

Network: Network Status Light

Call: Call Button

PIR: Infrared Detector

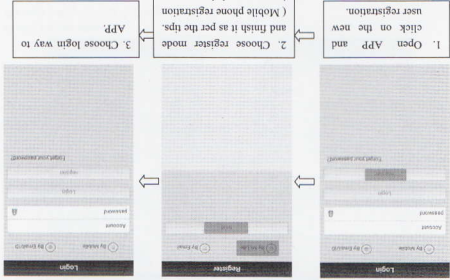
Door lock configuration instructions:



1. Normally open electromagnetic locks connect to J1 ① and ② (The ② is for the public GND).
2. Normally closed electromagnetic locks connect to J1 ③ and ④ (The ④ is for the public GND).
3. J1 ⑤ and ⑥ connect to interior unlock button.

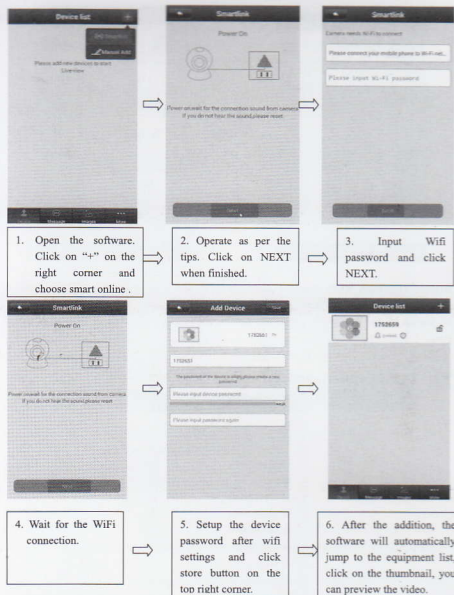
II. Software Download

1. Please search the "Smart Home Cloud" on GooglePlay for the Android software and on AppStore for the IOS software, or scan the QR code to download.
2. Register and login APP.



III. Network Configuration

1. Power on the door phone and waits for starting. (It will have the sound tip if the door phone starts).
2. Open and login the software, using the smart online mode to do the Wifi settings.
Tip: Please ensure the wifi that you set can connect to the mobile phone or iPad normally.



Warning: For security purpose, there is no default password, which need the user set the device password for the first time.

3. When you use the RJ45 cable connect the doorbell, choose the manual addition, and then you can finish as per the tips.

IV. Visitor Calling



1. Visitor press the calling button.



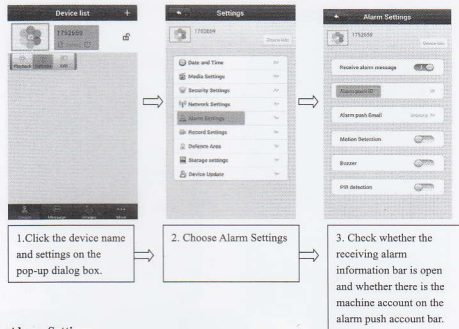
2. Popup message from APP, answer or hang up.



3. After answering, you can call intercom, take photos, open the door etc. Full duplex intercom call, which is more convenient to use.

V. Security Protection

1. Alarm Settings



Alarm Settings:

Receiving Alarm : was opened by default. If closed, cannot receive messages and alarm push.

Alarm Push Account: Add the first mobile phone by default configuration for bell. Support Max. five accounts.

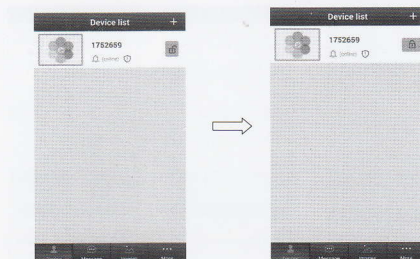
Alarm Push Emailbox: Binding mailbox. Bell will send the images to the mailbox, record the visitor information or alarm information when visitors call or alarm acts.

Motion Detection was closed by default. The bell alarm acts when object moves if the motion detection is open.

Buzzer was off by default. It will send out the alarm when the buzzer is open.

Human Infrared Detection was off by default. Capture early-warning is more sensitive and accurate.

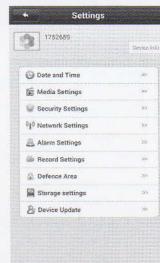
3. Protection and Removal



Remove Protection Mode: Removal protection by default. Your mobile phone will not receive the alarm information if the lock is at an open state.

Protection Mode: Your mobile phone will receive the alarm information if the lock is at a closed state.

VI. Device other function



Device Information: Display the current firmware information of the device

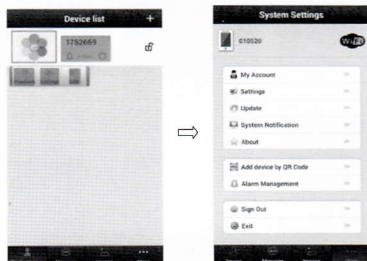
Time Setting: Set device time, the default automatic time synchronization network

Media Setting: Set image format(N/P) and reversal

Security Setting: Modify Admin Password.

Network Setting: Switch the wired network and Wifi network
 Alarm Setting: Configure the door phone alarm information
 Recording Setting: Set the recording mode (optional, need to work with TF card)
 Defence area setting: Configure infrared alarm device, up to 64 devices can be configured (optional)
 Storage Setting: Check the TF information
 Check Device update: Check device firmware update

VII. Software Function Introduction



Device configuration:
 Playback: Play TF card recording (optional)
 Edit: Edit device name and password
 Device: Display the device list
 Message: Record the visitor and alarm message
 Image: Record the screenshot.

System setting:
 Account information: Check and configuration information about current account, modify the account password
 System setting: Configuration alarm and calls ring, software automatically start and hang up icon configuration
 Scan QR code to add device: According to software reminder. Can be used to scan the QR code to configure the doorbell WIFI network.
 Alarm management: Configure alarm interval and alarm shielding device

VIII. Other function

- 1, Full-duplex voice intercom, operation more convenient
- 2, Support ONVIF protocol

IX. Main specification

Specification	
Chipset	Hi3518E
Resolution	1280*720 P(1.0 Megapixel)
Audio	Full-duplex voice intercom
Alarm motion detection	PIR(The human body infrared sensor detection)
Visual angle	110°super wide angle
Support protocol	ONVIF ,TCP/IP,UDP,SMTP,DHCP,UPnP,P2P
Size (LxWxH)	135mm*87mm*30mm (L*W*H)