

We would you like to thank you for choosing an ezcab product. You have made an excellent decision.

The following contents guide you how to use the product. Hope this device will bring you nice digital experience

Overview

You now have all the options you need for watching your favorite TV shows on your computer. And record them, so you can watch them any where and any time.

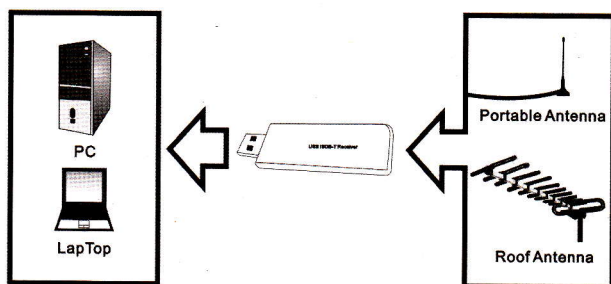
With the **ezcab USB 2.0 ISDB-T Stick**, you can record live TV or schedule recordings using the built-scheduler. The Time-shift function also allows you to pause and instantly replay your favorite scenes.

Specification

Item Name	USB 2.0 ISDB-T Stick
Interface	USB 2.0 standard
Recording Format	MPEG-2
Input	50 Ohm MCX connector – IEC for FULL SEG Device
Output	A type USB male connector
Receiving Frequency	48.25 ~ 863.25 MHz
TV System	Fully ISDB-T compliant
Punctured Codes	1/2, 2/3, 3/4, 4/5, 5/6 and 7/8
Bandwidth	6MHz De-Multiplexing
Power Supply	USB Bus
Consumed Power	≤ 1.5W
TV Player Software	Blaze Video HDTV Player 6.0
Dimension / Weight	56(L)×20(W)×10(H)mm / 12g

Cable Length	120cm for Portable Antenna
System Requirements	One available USB 2.0 port
	Pentium4 CPU or above
	512MB RAM or above
	Graphics card supports DirectX 9.0C
	1GB free HDD space
	CD-ROM for installation
	Windows XP, Vista, Seven
	ISDB-T stick device, Portable antenna, Remote Controller, Quick installation guide, Software CD(includes driver, application and manual)

Connection Guide



Notice:

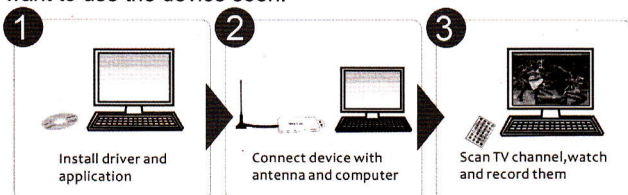
1, It is recommended to connect to a roof top aerial during the first time installation as this may provide a better signal quality than the provided portable antenna.

2, You need to ensure that you are located in an area that has Digital ISDB Terrestrial coverage.

Quick Installation Chart

Please read the all installation guide clearly.

Please install the device hardware and software following below chart if you're very busy and want to use the device soon.



Step 1: Insert the CD-ROM to install the drivers and application software.

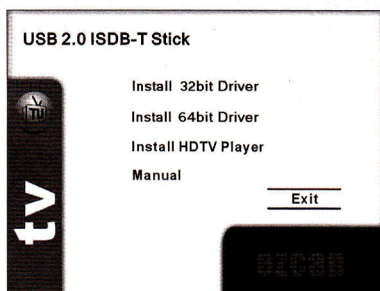
Step 2: Connect USB 2.0 ISDB-T Stick with Portable antenna or roof antenna and computer.

Step 3: Open Blaze Video BlazeDTV 6.0 software to scan the TV channels Watch and record your favorite TV shows into your computer.

Hardware Installation

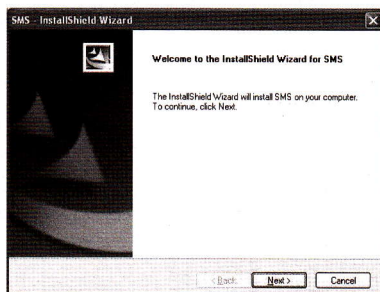
Note: If you have any antivirus software enabled, please disable it during the installation of the software.

Before you first connect the **ezcap USB 2.0 ISDB-T Stick** to your computer, please insert the "CD-ROM" into your CD drive. Then you should find a picture of software running.



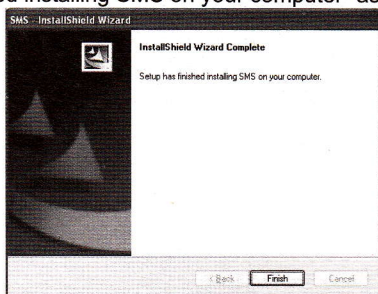
Note:When you install the device driver, if your OS version is 32bit, please select "Install 32bit Driver", and your OS version is 64bit, please select "Install 64bit Driver".

You only need to click the "Install Driver" icon if your purchasing product is USB ISDBT FULL SEG Stick. And you need to plug the device into computer if system appears you that.



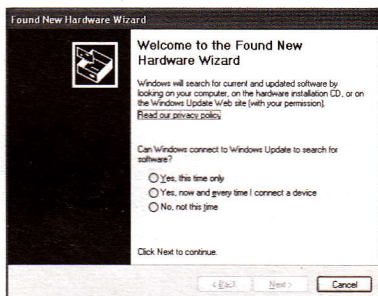
Please click "Next" and/or "OK" button to install the drivers until system appears

you "Setup has finished installing SMS on your computer" as below.



Please click the "Finish" button to complete the driver installation.

Now, you need to plug **ezcap USB 2.0 ISDB-T Stick** into your computer's USB2.0 port. Computer system will appear you "Found the new hardware" . Please select "No, not this time" and click "Next" button.



Then select "Install the software automatically" and click "Next" button, system will install driver for hardware device until you get a window as below.

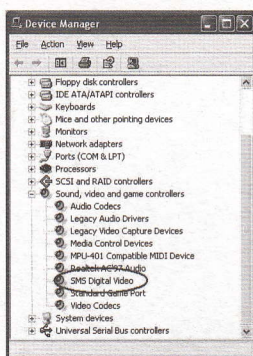


Please click "Finish" to finish the driver installation, and the system appears you "Device is now installed and ready to use".

You will now need to check that the drivers are installed correctly.

Right click on My Computer and left click on Properties. Click on Hardware tab and then Device Manager.

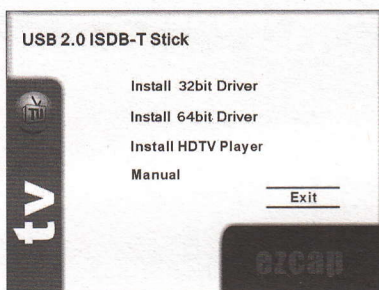
In the Device Manager, click on the +symbol on the Sound Video and Game controllers section. If the driver is installed correctly you should see the "SMS Digital Video". If it has a yellow mark next to it then this means that the driver is not installed correctly. You will need to remove the driver and disconnect the **ezcap USB 2.0 ISDB-T Stick** from the computer and re-connect is to install the driver again.



Note: You should find the Device Name is “LME-ISDB-T-MVB8096” if your purchasing product is USB ISDB-T FULL SEG Stick.

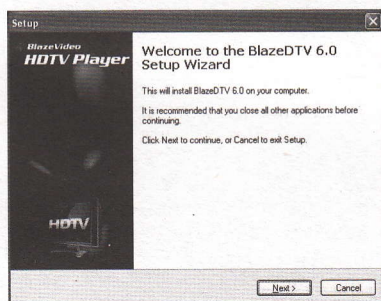
BlazeVideo BlazeDTV 6.0 Installation & Guide

Please insert the “CD-ROM” into your CD drive. Then you should find a picture of software running.



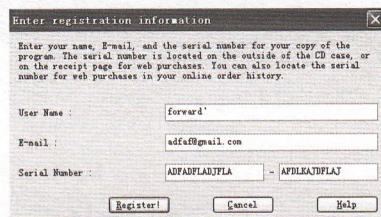
Please select the option “Install HDTV Player”.

Select your language for the installation and Click “Next” or / and “Install”.



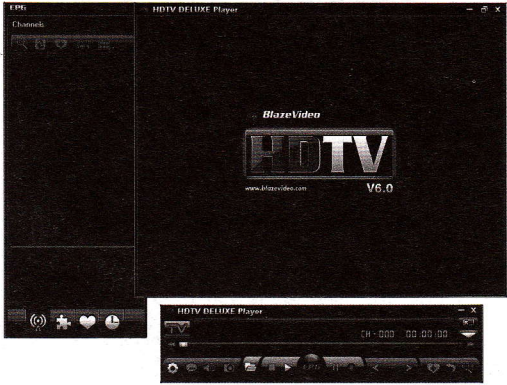
Click “finish” to complete setup, restart your computer if needed.

Double click “BlazeDTV 6.0” icon to start HDTV Player, and a message will appear a skin.

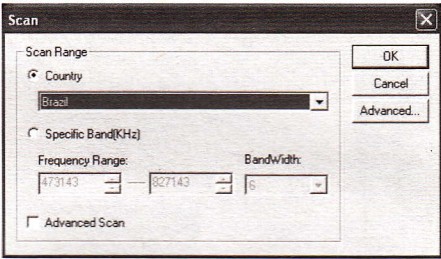


Please enter your name, E-mail and software Serial Number(You can find it on the CD bag), then click “Register” button to start software setting.

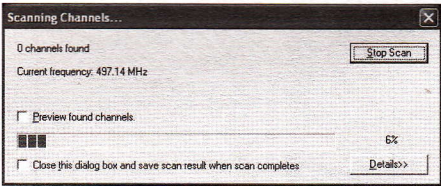
Now we can receive the ISDB-T digital TV programs with the **ezcap USB 2.0 ISDB-T Stick** and software.



A box will pop up to enquire you whether to scan channels. Click "Yes", the "Scan" box ejects for you to set scan options.

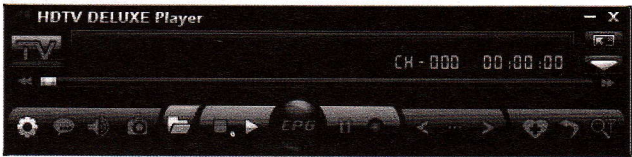


Please select "Brazil" for Country selection, and click "OK" to scan TV channels as below.



















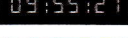



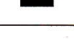






Wait for scanning channels until software appears you "Scan finished", then click "OK" button to complete scanning channels. Now you can enjoy your favorite TV shows!

Main Control Panel:




Button/Icon	Name	Description
	EPG	Open EPG window for HDTV playback
	Play	Play TV or Media
	TimeShift/Pause	TimeShift(DTV only); or pause during the DVD playback (A green bar appears on Main Control panel)


	Stop	Stop the current playback. Click play to restart playback.
	Record	Record TV show
	Previous	Skip to previous TV channel or DVD chapter to play
	Browse	Browse channel, the swift way to switch channels
	Next	Skip to next TV channel or DVD chapter to play
	Open	Select playback type
	Subtitles	Select Subtitles. Select language caption when there are multiple language captions.
	Audio	Select Audios: Click to select audio if there are various audio options
	Capture	Capture video as .bmp still image
	Volume Control	Drag slider right/left to increase/decrease volume.
	Mute	Click it, the audio is muted, click once again, get back the previous conditions.
	Media Type	Display current media type, vary with different media type
	Playback status	Display current playback status, vary with different playback status
	Signal Quality	Display HDTV signal quality (DTV only)

	Signal Strength	Display HDTV signal strength (DTV only)
	Channel/chapter	Display current TV channel or DVD chapter info
	time	Display hours, minutes, seconds of the current TV time or DVD chapter time
	Fast backward	Fast backward, switch between 1X, 2X, 4X, 8X, 16X at each press
	Slider bar	Drag the slider to new position for playback.(Only available on Professional Version)
	Fast Forward	Fast forward, switch between 1X, 2X, 4X, 8X, 16X at each press
	Open Floating Panel	Show Floating Panel
	Show Advanced Panel	Show/Hide Advanced Panel
	Minimize	It is a standard windows icon. Click it, the control panel and the view window will be minimized and displayed as icons on system toolbar.
	Exit	Exit BlazeVideo HDTV Player.
	Scan	Scan channels.
	Recall	Return to last channel.
	Favorite	Add current channel in favorite list.

TimeShift

1. Lunch TimeShift



Just press  Pause button during HDTV program playback status, you will pause watching and launch TimeShift function, then you will do any other thing if you want.

In TimeShift status, playback status displays as , the time stops at the TimeShift start time, and a green bar will display and keep changing at the center of Main Control Panel.

Depending the TimeShift buffer size you preset in DTV Options, the whole TimeShift duration time will be different, which can be estimated by contrasting the TimeShift start time and the current System time.


Note: Due to the certain size of TimeShift buffer file, upon green bar reaching at the end, if you do not cancel TimeShift, the previous TimeShift program will be removed, what you reserved will be the latest program. You can also enlarge the Buffer Size in DTV Options.

2. Play TimeShift Program

Press  Play or press  Pause button again, you will play timeshift program, continue to watch HDTV program from the paused position, thus you will never miss any of the wonderful instance of the HDTV programs.

In TimeShift playback status, there is still a green bar displaying.

3. Exit TimeShift, Resume Live Playback

Press  Play button two times, you will skip some content (such as boring Ad.), resume live playback and keep along with the actual playback status offered by HDTV service provider. This function is useful for you to skip the boring Advertisement and enjoy a short time break.

In Live Playback status, the green bar disappears and the Main Control Panel returns to normal status.



Notes:

1. The TimeShift function is only activated for HDTV program playback, not available for media file playback.

2. The paused duration time depends on your TimeShift Buffer Size, which can be set in DTV Setting.

Real-time Record TV Show

You can real-time record your favorite TV show while you are watching TV show. You can record video & audio, or record audio only. Please go to Record Setting for record type setting.

The operation is very easy, just directly click  Record button on Main Control Panel, or click  in Floating Panel to activate Record page, then click record button, you will begin to record file.

Record

Click to start to record, during recording procedure, the file size will keep dynamically changed

Stop Record

Click to stop record, then the record file will be auto saved as ".mpg" file named by record time in the specified folder you have set in Record Option page.

Play Record

Click to playback the selected record file.

Schedule

1. Schedule Record TV Show

BlazeVideo HDTV Player allows you to schedule record TV show. If you have to be away from PC at the time of your favorite program playback; or you can not bear sitting in front of PC to wait your desired program to begin; or you have multiple favorite programs to watch at the same time. Don't worry, the Schedule Record feature will assure you never miss any of your favorite programs. Your favorite program will be automatically recorded and saved on your hard disk.

The record file is default saved in "My Document", for the record directory setting, please see Record Setting page.

Just set Task Type as "Recording File" and set the record duration when you create scheduled task.

2. Wakeup Record TV Show

PC auto wake up to record at PC hibernation status.

If the task start time is far from the moment you create, and you won't sit in front of PC to wait the task to start, you can hibernate your PC for power saving:

- Set scheduled record task, please see Create Scheduled Task for details;
- Hibernate your PC;

Note: To hibernate your PC, you must activate "Enable Hibernation" in your PC's Power Options Properties.


- Your PC will auto wake up to perform record task by the scheduled time start.

3. Scheduled Watch TV Show

BlazeVideo HDTV Player allows you to schedule watch TV show, it will remind you to watch your favorite TV show at the specified time, so that you will never miss any of your favorite TV show.

Just set Task Type as "Viewing Reminder" when you are creating a scheduled task. After you finish creating task, Player will auto switch to play the preset TV channel by the task start time.

4. Create Scheduled Task

In EPG_Schedule window, click  to create a task.

In EPG_Channels window, select a program with EPG guide and click

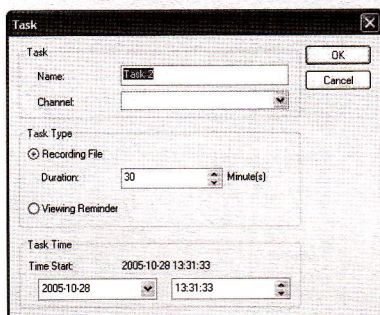


In EPG_Programs window, right click a program and select "Add to Schedule".

In EPG_Favorite window, select a program with EPG guide and click



Through one of above steps to create a task and eject below Task box: here you can set task name, task type and task time.



The schedule record steps are as below:

- Set Task Name: Input the task name in "Task Name" option
- Set Task Channel: drop down click to select your desired channel
- Set Task Type: If want to Scheduled Record TV, please select "Recording File", and set the record duration time. Please refer to Scheduled Record TV. If want to Scheduled Watch TV, please select "Viewing Reminder". Please refer to Scheduled Watch TV Show.
- Set Start Time. The start time will directly display

After click "OK", you will finish setting schedule record task, HDTV Player will automatically begin to record your desired program at the task time.



: Modify Task: select a created task and click this button, you will modify the task details.



: Delete the selected task.

Please find the "Help.chm" file in BlazeVideo software install path. You can open it to get the more information.