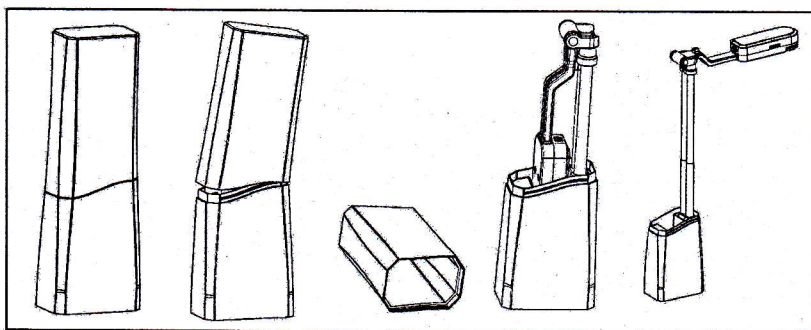


High-Speed Scanner

Manual

Structure schematic drawing



Fold → Uncapping → Expansion → Scan

Scanner

Service information

Network services

You can get technique support and related information through our company website and telephone.

After-sales insurance notes

1. All the after-sales policy complies with the stipulation of "three packages".
2. Maintenance service is non-freight, charge retails and overhauling programs by next year.
3. When the products are sent to repaired, total package is demanded to ensure the quality of maintenance.
4. Non-warranty scope
 - The damage is made by irresistible disease such as natural disease.
 - Personal factors.
 - Improper use.
 - Problems and error made by other software of installation and design.
 - Computer virus.
 - One that tears original warranty serial number card or non-serial number card will cancel his rights of maintenance and not provide maintenance.
5. If the adverse products are generated by factors of non-warranty scope, we'll charge under the standard required by company, which has nothing to do with warranty years.
6. The warranty scope is only for the product itself without joint maintenance responsibility for supplies.
7. During repairing, our company is not responsible for the interests of purchaser and potential damage in foreseeing circumstances.

Suggestion for use

The effect is better under the environment of adequate lighting.

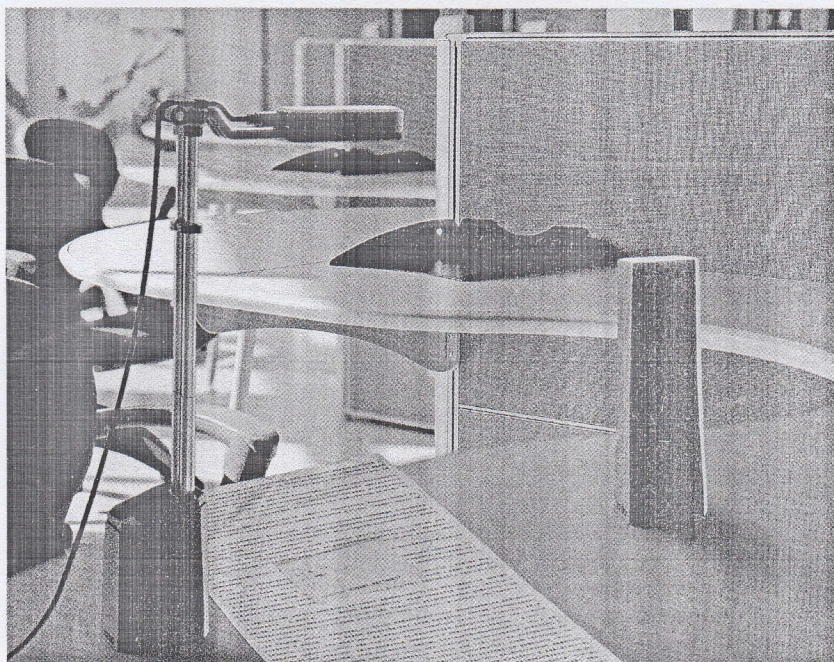
Chapter I Introduction

1.1 Package contents

- (1) High-Speed Scanner
- (2) High-Speed Scanner Special manuscript desk
- (3) CD-ROM (including driver programs, operation instructions and application procedure)
- (4) Cable for USB 2.0
- (5) Instruction for user
- (6) Yardstick

If above package accessories are incomplete, please contact with your dealer or company to ensure your interests.

1.2 Appearance



Open

Fold

1.3 Recommended configuration

- (1) Hardware : Pentium 4 or the level of CPU or higher, 512MB or higher memory, CD-ROM.
- (2) USB 2.0 connector.
- (3) Operation system: Windows 2003、 Windows XP、 Windows 7.
- (4) Please pre-install the full version of OFFICE 2003 before installing the OCR

1.4 Product functions, parameters and application

High-Speed scanner is portable document photography facility. Whatever, such as paper files, color picture or three-dimensional objects, it can scan and store easily. It adopts special folding design; the appearance is simple, noble, generous and stable. When scanning, documents and objects will not touch with it, so that cardboard phenomenon found in traditional scanner is avoided, the high-definition display and storage of video files will meet the demand for document management. With it, you can get access to valuable video data at your own will. It provides more functions and has wider application than usual traditional scanner.

1.4.1 Functions

(1) Duplicator

It can get quickly access to paper files, video files, etc, and can print at real time through black and white or colored duplicator, provide files video photocopy simultaneously. It's free to set the size and angle of rotation, which can also copy books.

(2) Physical objects projector

Documents photography is a vertical scanning design, which can take place under lens, capture graphics at real time, and project to screen directly in harmony with software.

(3) physical objects scanner

Scanning induct components with mechanical design, it's convenient to scan objects, which can preserve data. At the same time, it can scan continuously, and time and space will be free.

(4) Video

Besides providing the function of scanning papers files and objects, it provide video at random, operate simply and time of video is free.

(5) Scanning and preserving for A4 files

Documents photography adopt interface in USB2.0, transmission speed comes to 480MB/S, 2 million pixels HD lens, provide high quality of scanning, maximum size comes to A4, and provide cropping in dealing with pictures, this way could save space of documents reserving.

(6) E-mail

The video files scanned and reserved by documents photography are able to be sent anywhere.

(7) Image processing

It attaches powerful image processing software arbitrarily. Which can add words to video files ,cut pictures, tilt correction ,rotate pictures at arbitrary angle, filtering can eliminate the stain and impurity, etc. It is able to make OCR identification to words and form, which can transform picture file into edited text file.

1.4.2 Parameters

Product Model	(2M)	(5M)
Product Appearance	Telescopic folding portable	
Scan Type	Documents, Bill of Documents, Identity Card, Notes, Pictures, Photographs, Magazines and Books, Three-dimensional Object etc.	
Scan Size	A4, A5, A6, A7, Calling Card, Identity Card	
Scan Speed	1 Second per-time	
Resolution	1600×1200.(2M)	2592×1944 (5M)
Image Color	24 Bit	
Image Format	JPEG, GIF, BMP, TIF , ETC , PDF.	
Connector	USB 2.0 Communicate and Power-on	
Image Control	Brightness adjustment, Saturation adjustment, Exposure value adjustment, Sharpness adjustment, Color adjustment, Gain control, etc.	
Light	Natural Light and LED light source	
Weight	1KG	
Other Features	OCR(Optical Character Recognition), DV video Recording	
System Requirements	P4 or equivalent CPU, 512M above, built-in USB 2.0 host adapter or external plug USB 2.0 adapter, MS Direct9.0 above	
Operating System	Windows 2003 、 Windows XP 、 Windows 7	
Light Control	Dials the code switch	
Product Function	Document Scanning, Video, Eyes-Protection Lamp	

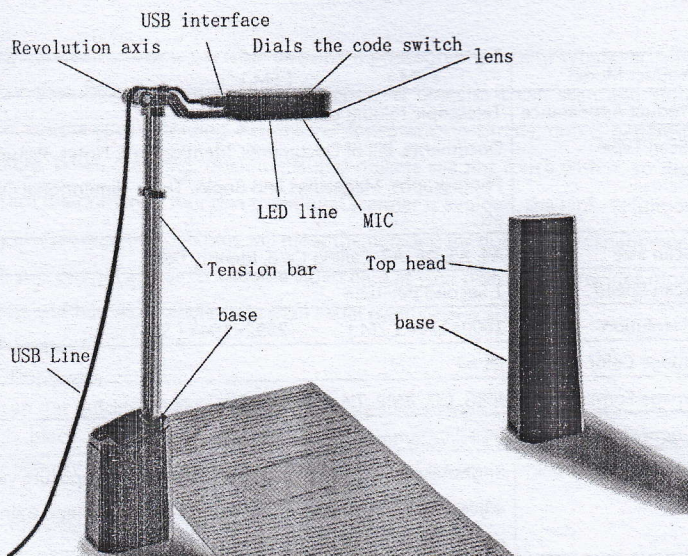
1.4.3 Applications

- (1) As portable photography, it proceeds daftly digital scanning of paper file or other objects everywhere.

-
- (2) As camera, it proceeds video scanning.
 - (3) Realize photocopying by combining computer and printer.
 - (4) object scan function concert with projector to show video

Chapter II Installation

2.1 Structural drawing



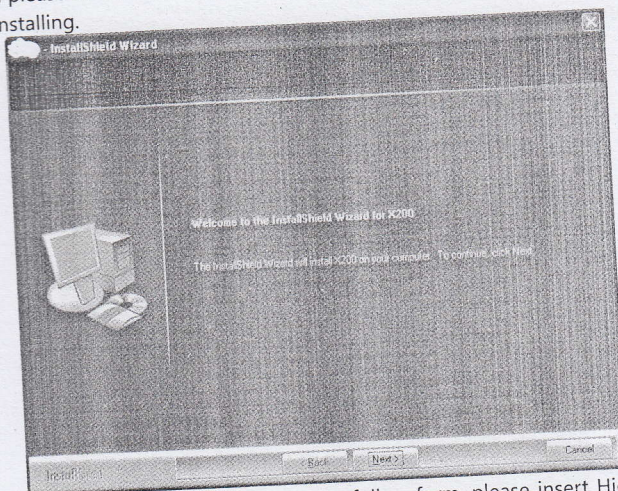
2.2 Software CD

Put High-speed scanner software CD into the drive or run "Autorun.exe", it will read automatically, pop-up installation window with six buttons: Chinese Software, English software, Scan;

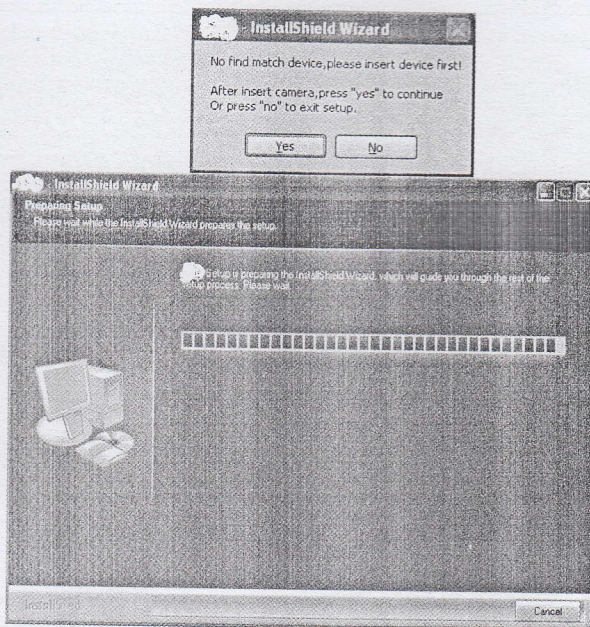


2.3 Driver Installation

Choose "English software" - "Driver" button to install driver for High-Speed Scanner, please confirm that High-Speed Scanner is connected with the computer before installing.

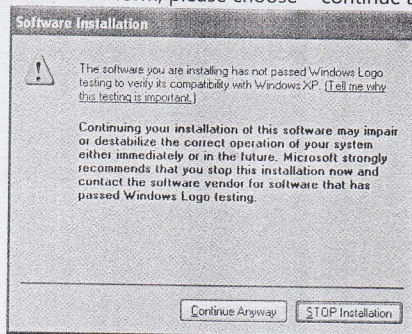


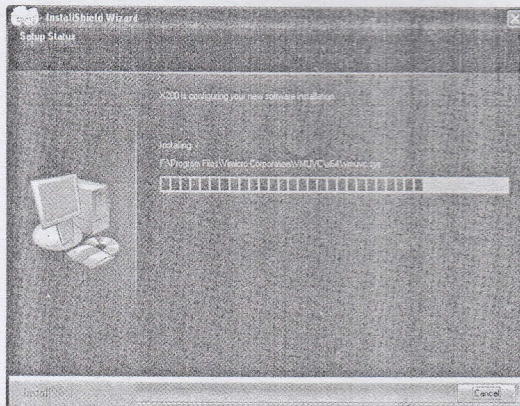
Choose "next" : If appear with the follow form, please insert High-Speed Scanner to USB interface, and then choose "Yes" .



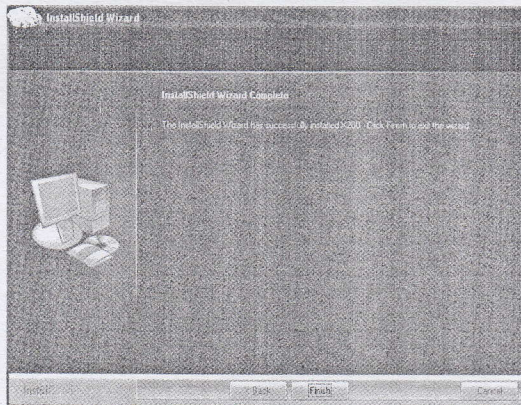
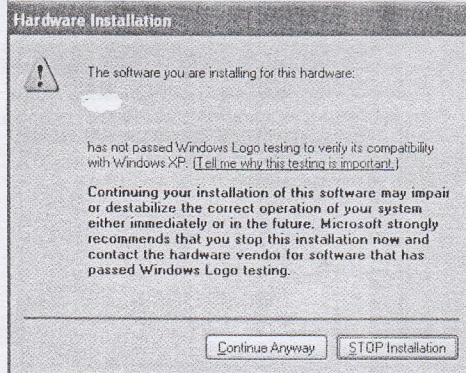
Driver is installing automatically.

If appear with the follow form, please choose "continue anyway" .





If appear with the follow form, please choose "continue anyway" .

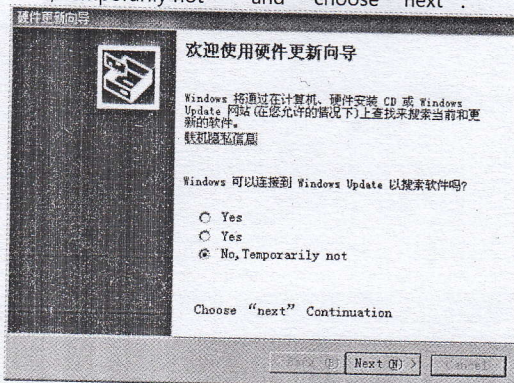


Choose "finish" to finish installation. After installation, please remove the facility before pull in it again.

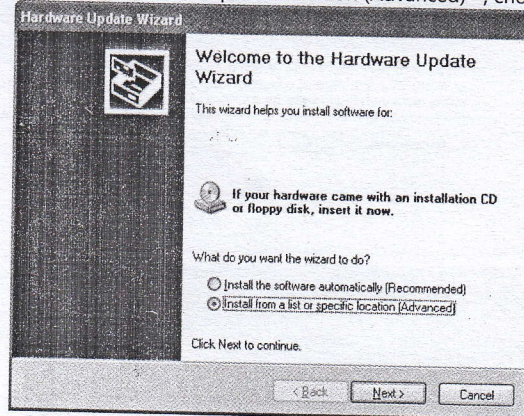
Windows XP driver update

After driver installation, the follow hardware update form will pop up automatically.

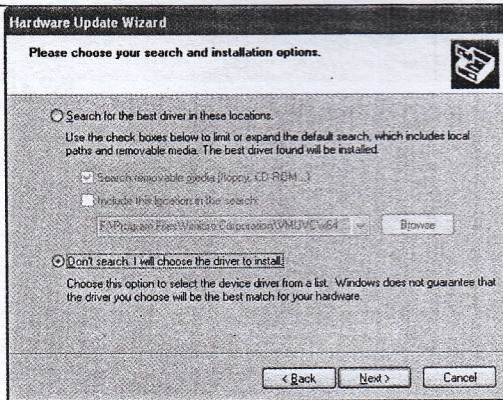
Choose "No, Temporarily not" and choose "next".



Choose "Install from a list or specific location (Advanced)", choose "next".

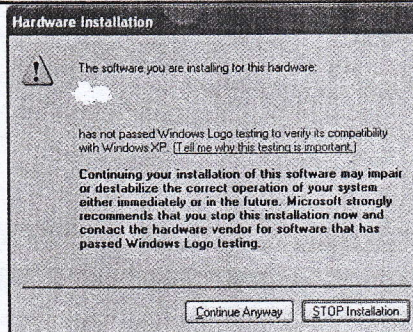
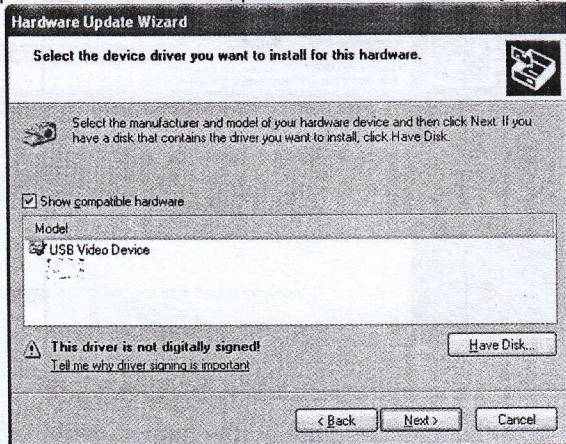


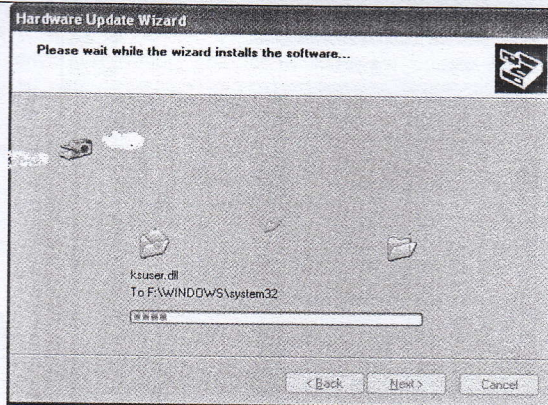
Choose "Don't search, I will choose the driver to install", choose "next".



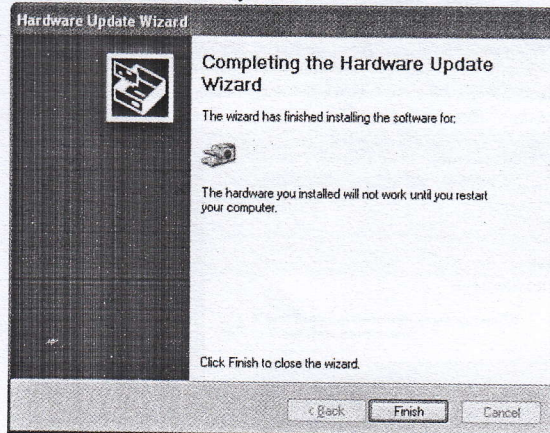
Choose "next" and "next".

If appear with the follow form, please choose "continue anyway".





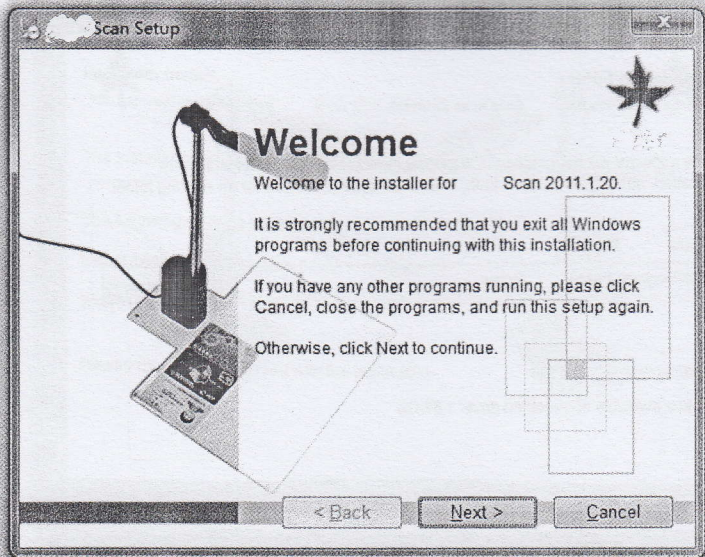
The drive is update automatically.



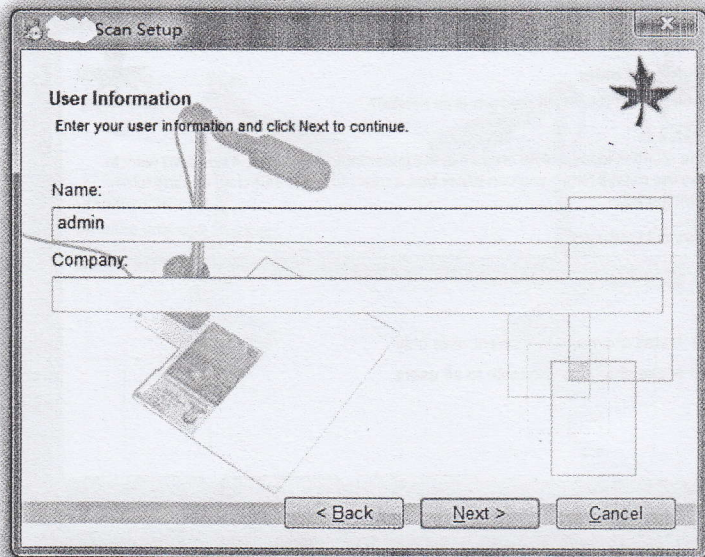
Choose "finish" to finish update driver.

2.4 Software Installation

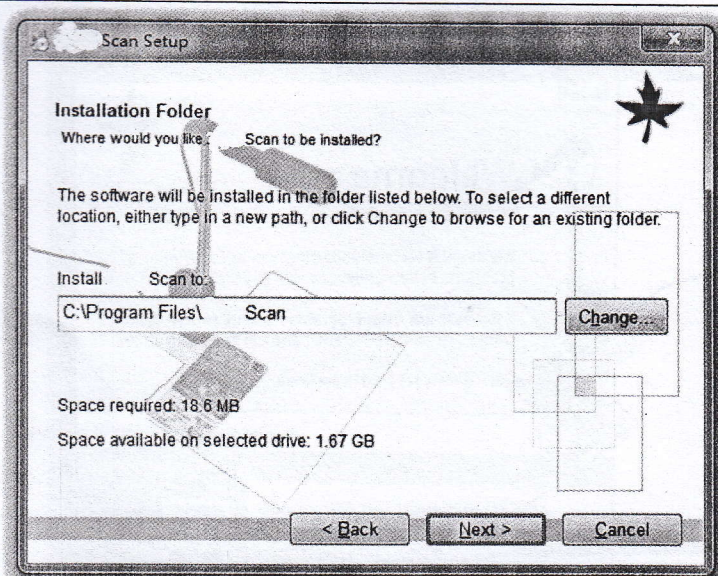
Press "Software" button to install software.



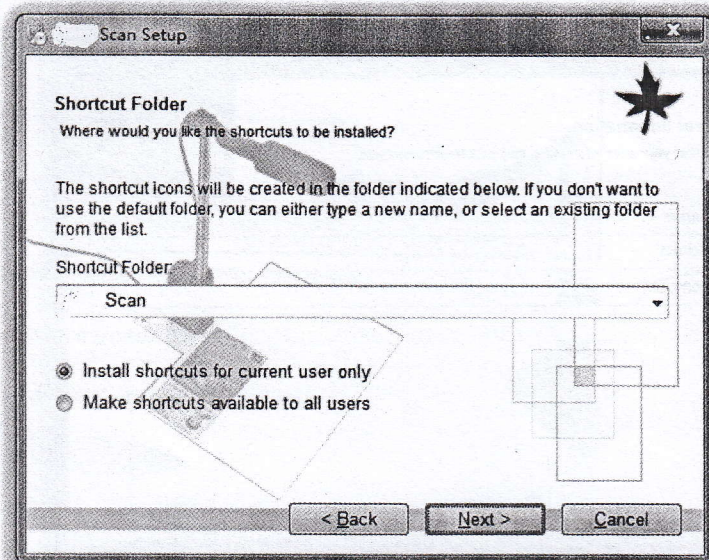
Choose "next" .



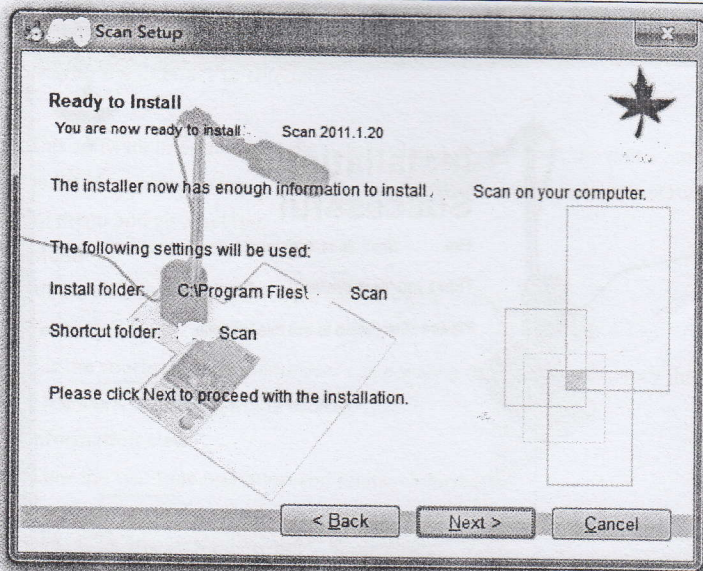
Input user information or with the default information, choose "next" .



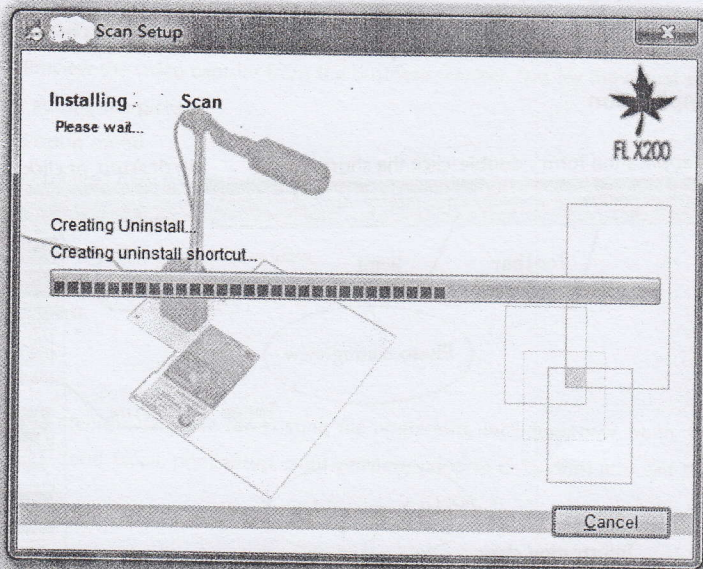
Choose install path or with the default path, choose "next" .



Choose "next" .



Prepare to install, "next" to continue.



It is installing, please wait...

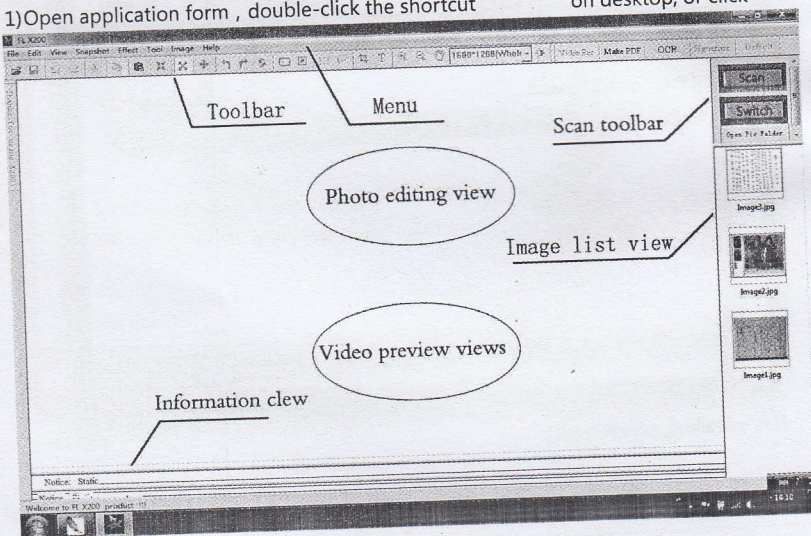


Choose "finish" to finish installation.

Chapter III Software Interface Instruction

3.1 Application

(1) Open application form, double-click the shortcut on desktop, or click



*Start-All programs-

(2) Display the interface of software

This software interface are mainly divided into: the title bar, the menu , toolbar, image list view, video preview view, photo editing view, text views, the status bar, popup menu and view splitter.

Menu

All the functions of the software can be found in the menu

Toolbar

It is the shortcut of the menu; user can enhance operational efficiency through using the icons displayed on the toolbar.

Information clew

Clew the real-time operation and relative information.

Image list view

Display all the pictures of the current Settings folder and user can open, or delete the pictures displayed in the image list view. The number of list can be operated by user.

Video preview views

Preview the video capture from the business scanner. Display the actual effect after editing the picture.

Popup menu

Displayed partial menus witch can be used currently.

View splitter

It can adjust the size of the view.

3.2 Menu

3.2.1 File

File menu usually use for existing file operations, including: new, open, save, save as, Send Email, print setup, print preview, printing (1:1), print and exit these functions.

New	
Open	
Save	
Save As	
Send Email	
Network Fax	
Print Setup	
Print	
Exit	Ctrl+X

New

New a blank document, in it image can be pasted and operated.

Open

Open the picture file existing in computer; it can precede several of format picture files which support this system, while others can not make it.

Save

Save the image displayed on image view after editing, the filename, file formats, and the file path are same as the original ones.

Save as

Save the image displayed on image view after editing, the filename, file formats, and the file path can be modified.

Send Email

Open the web site which user use to send an E-mail. Remember to write the web site in the setting dialog.

Print Setup

Choose the printer that has been installed in the computer, it should be set up before printing or printing preview.

Print

Print the image displayed on image view by the printer on the computer.

Exit

Exit when user finishes using the software.

3.2.2 Edit

It includes Undo, Redo, Cut, Copy, Paste, Eraser, Text, Font, Cut Out, Delete, etc.

Undo	
Redo	
Cut	
Copy	
Paste	
Eraser	1x
Pen	5x
Cut Out	10x
Delete	50x

Undo

Back to the last step of edit operation.

Redo

Go to the next step of edit operation.

Cut

Remove selected part of the picture.

Copy

Copy a part or the whole picture.

Paste

Paste the clipboard data.

Eraser

Remove picture information with width 1, 5, 10 or 50.

Cut Out

Remove unselected part of the picture.

Delete

Delete the opened picture.

3.2.3 View

It includes Full Screen, Actual Size, Frame Size, Move, Dynamic or Static, Rearrangement, etc.

✓	Frame Size
	Actual Size
	Full Screen
	Move
	Dynamic or Static
	Rearrangement

Full Screen

Only show Video preview views without menu, toolbar, status bar, information
clew and image list view.

Actual Size

Show the video and picture with their actual size.

Frame Size

Show the video and picture with frame size and at the same time the
proportion of image height and width is changeless.

Move

Move the image if user want to see the different part of the image.

Dynamic or Static

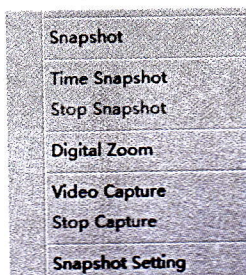
Show the image view and hide the video view, or show the video view and hide
the image view.

Rearrangement

Restitute window to default state.

3.2.4 Snapshot

It includes Snapshot Setting, Snapshot, Time Snapshot, Stop Snapshot, Digital
Zoom, Video Capture, Stop Capture, etc.



Snapshot Setting

It provides settings of picture size, picture state, picture format, picture naming,
auto threshold, auto ground color removal, auto add snapshot time, auto gray scale,
time internal of time snapshot, JPG quality, and save path, etc. And also auto
threshold and auto ground color removal can be previewed. Choose this menu item,
you will get the follow dialog.

Snapshot

Scan an image for the video preview.

Time Snapshot

Scan automatically according to the interval.

Stop Snapshot

Stop the scan which make by the "Start Scan".

Digital Zoom

With this, the video can be zoomed in, it has six steps.

Video Capture

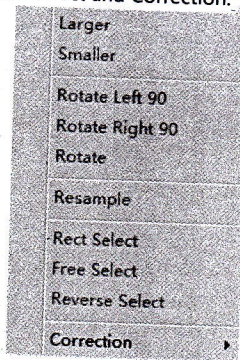
Start recording the video.

Stop Capture

Stop recording the video.

3.2.5 Image

It includes Rotate left 90, Rotate Right 90, Rotate, Larger, Smaller, Resample, Rect Select, Free Select, Reverse Select and Correction.



Rotate Left 90

Rotate the image for counter-clockwise with 90 degrees.

Rotate Right 90

Rotate the image for in clockwise with 90 degrees.

Rotate

Rotate the image for in clockwise or counter-clockwise with any degree.

Larger

Display the image with a smaller scale.

Smaller

Display the image with a bigger scale.

Resample

Change the actual size of the image. Click the menu item, the resample dialog will be shown.

User can choose to change the image size factor or change directly the image height or width, and choose different interpolation approach.

Rect Select

Select one rectangle area in the image.

Free Select

Select one un-regular area in the image.

Reverse select

Reverse select the unselected area **by rect select or free select.**

Gamma

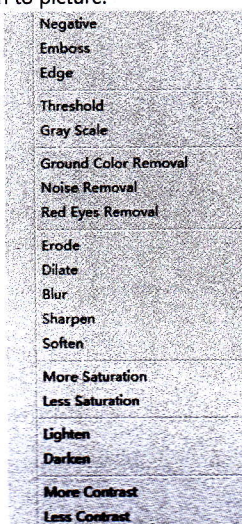
Though the gamma values may differ for input and output devices to accommodate the difference between scene lighting and lighting of the viewing environment.

Colorize

Adds color to a grayscale image converted to RGB, or adds color to an RGB image-for example, to make it look like a duotone image by reducing its color values to one hue.

3.2.6 Effect

It includes some operation to picture.



Negative

Image displays dark areas as light and light areas as dark.

Emboss

Make increasing pattern on the surface of image.

Edge

Reserve the edge of the image.

Threshold

The Threshold effect converts grayscale or color images to high-contrast, black-and-white images. Specify a certain level as a threshold; all pixels lighter than the threshold convert to white and all pixels darker convert to black.

Gray scale

Make the image into colors which mix the black and white, like the colors of

ash.

Ground Color Removal

Remove the ground color.

Noise Removal

Remove the noise of image.

Remove Red Eye

Remove the red eye of the people in the image after select the eye.

Dilate

To make the edges in the image become bigger than before.

Erode

To make the edges in the image become smaller than before.

Blur

Make the image less clear in different part.

Sharpen

Enhanced image edge effect, so it will has more obvious edges.

Soften

To make the whole image more gentle.

Lighten

Increase the value of a pixel in the image.

Darken

Reduce the value of a pixel in the image.

More Contrast

Increase the contrast of the image.

Less Contrast

Reduce the contrast of the image.

More Saturation

Increase the saturation of the image.

Less Saturation

Reduce the saturation of the image.

3.2.7 Tool

It includes video format, video attribute, audio format, make PDF, make signature, insert signature and optical character recognition, etc.

Video Attribute
Video Format
Audio Format
Make PDF
Text
Font
Make Signature
Insert Signature
Insert Stamp
Optical Character Recognition

Video Format

To choose the color spaces compress format , output image size and frame frequency.

Video Attribute

Set video light, contrast, saturation, etc.

Audio Format

Set parameters of microphone.

Make PDF

Convert pictures to PDF document.

Text

Add text in the picture. At the location wanting text, press left-button to get one edit-box to input text. Press left-button out of the edit-box to finish this operation.

Font

Set text font for adding text to the picture.

Make Signature

Make signature picture and encode it.

Insert Signature

Decode signature file and insert it to the right location.

OCR

Please pre-install the full version of OFFICE 2003 before installing the OCR

3.2.8 Help

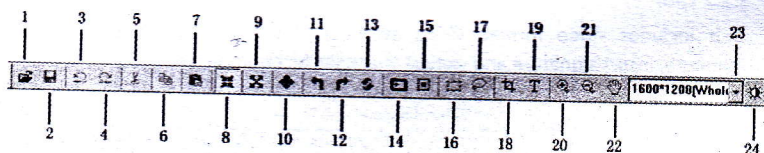
About

Show information about this software.

User Manual

Show the user manual document.

3.3 Tool Information



1-> Open

4-> Redo

7-> Paste

10-> Frame Size

13-> Free Rotate

16-> Rect Select

19-> Text

22-> Move

2-> Save

5-> Paste Cut

8-> Picture Size

11-> Rotate Left 90

14-> Time Snapshot

17-> Free Select

20-> Larger

23-> Picture size

3-> Undo

6-> Copy

9-> Actual Size

12-> Rotate Right 90 Rotate

15-> Stop Capture

18-> Cut

21-> Smaller

24-> Video Atttribute

Chapter IV Common problems and use skills

1. How to copy a book?

Answer : Please set up interval of scanning in dialog box; preserve the name of files and path. Then choose optional scanning, this is convenient to copy a book. If you want to make a PDF document in order to read easily, please refer to the sixth.

2. How to add words to scanned photos?

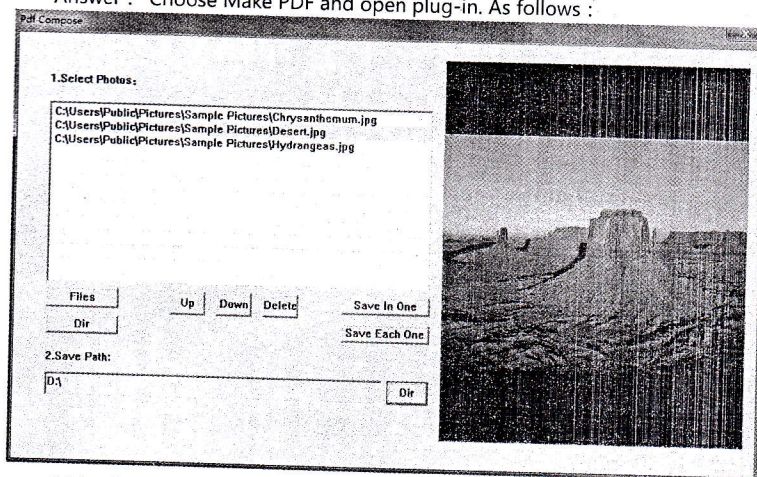
Answer : Click Edit-Text, with left-button-click in the edit area to get edit box. Input words in edit box. To finish enter, you just need to click outside of the edit box.

3. How to edit text files?

Answer : After scanning the files that need to edit, make recognition of it, you can edit it in the recognized dialog frame, also edit it by sending to Word

4. How to produce PDF files?

Answer : Choose Make PDF and open plug-in. As follows :



(1) Switch one or some images into corresponding PDF documents

- Choose Files, left-click the Mouse to choose the files what you want to switch.
- Choose "save info one" or "save each one" .

(2) Some images turn into a PDF document

- Choose ADD Files, left-click and choose the files what you want to switch.

-
- Choose "save info one" or "save each one" .

5. How to use print (1:1) rightly ?

Answer: this facility has three heights to scan, so it needs to choose the right height when you want to print. And at the same time, the picture you want to print must be got from this facility.

6. How to copy document with print (1:1)?

Answer :

To get the best result, suggest the follow steps:

First, confirm that environment light is enough and adjust camera to its most clear-cut state.

Second, adjust video light, contrast and so on to get the right state.

Third, crop the redundant edge of the video.

Forth, dispose the picture with ground color removal and threshold. And eraser can be used here also.

Fifth, set print (1:1) height (refer to 5), print preview, print.

7. How to use OCR?

Answer : Before OCR, pays respects installs the OFFICE 2003 full pages

8. How to raise the recognition rate of OCR?

Answer : It lies in the contrast and clear degree for words and background. Under this circumstance, it comes to 95%, and ensures the following factors :

- 1、Crop part images with words
- 2、Ensure the words not to incline (if inclined, please rotate the photographs)
- 3、Adjust the properties of video to raise the clear degree when scanning.
- 4、Before OCR, pays respects installs the OFFICE 2003 full pages.

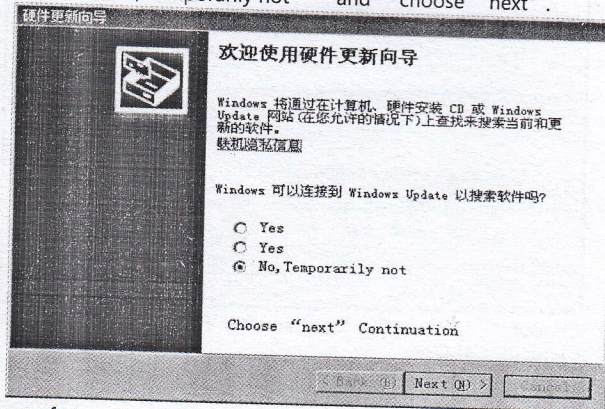
Chapter V Errors, solutions and notes

Error1. The software can not be opened

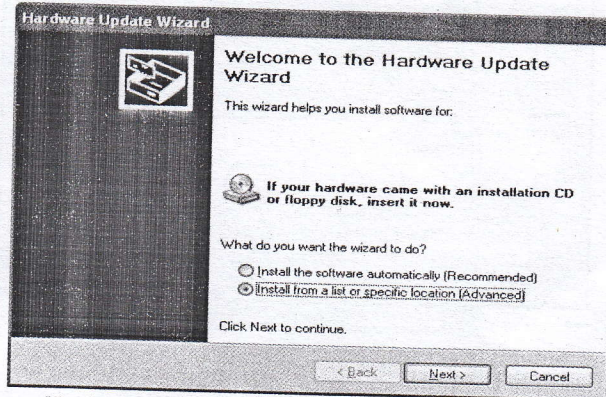
Solutions

1. Look through whether the hardware is attached with business scanner.
2. Look through whether the USB cable by two sides is natural.
3. Open AMCAP to see whether the image is natural.
4. Right-click "my computer" , choose in pop-up menu: management--setting management--image processing device. If it is not

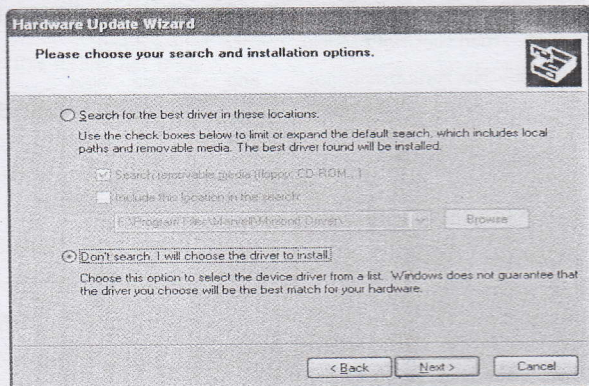
displayed with but "USB video device" in "image processing device", then click right Mouse, choose "renew driver"
Choose "No, Temporarily not" and choose "next".



Choose from "install form a list or specific location [Advanced]", click "Next"



Choose "Don't search, I will choose the driver to install" in pop-up dialog box, then click "Next"



Choose in model list, then click "Next" . With the following form, choose "continue anyway" .

