

GPS Portable Navigation Device

User Manual

Please read this manual before you start using this device

Thanks for purchasing our product. Please read this manual carefully before starting to use this device. When you use this device, you are supposed to learn well of this product.

The information in this manual has been verified for its accuracy. But no liability will be applied for the correctness of mapping data of navigation, technical and/or editorial interpretation or illustration, or the printing and translation of this manual, nor liable for any consequence or incidental damages caused by using this manual.

This device is a complicated technical product consisting of OS and third party software. The manufacturer has paid sufficient attention to and fulfill its duty in its hardware manufacture processing and in development and/or application of the software so as to ensure the device work properly. If there is any malfunction or defective of the device, the manufacturer will provide a warranty for the congenital quality problem, but not covering for any loss or damage of property, or any consequence caused by or related to using this device.

The navigation software and mapping data is provided by a third party. Its copyright is protected by laws. A User can only use on this device, any copying or application of the software for other purpose is not allowed.

No explicit and/or implicit guarantee or assurance will be applicable for the validity, integrity, correctness, accuracy of mapping data for navigation used on this device, nor liability for any loss, damage, and/or any consequence caused by or related to defective mapping data or software used on this device.

The copyright of this manual is owned by the company and protected by laws. Any copy or translation of whole or part of its content, including words, figures, signs, phonetic index, etc., is only allowed for the individual customer's reference, but not for public circulation, or other legal and/or commercial purpose. The company reserves the right for final interpretation of this manual.

General tips for GPS application

The following content is tips for GPS device application and operation. Please read it before starting use of the GPS device, so that you may make a better use of the GPS device.

While the GPS device is working, it receives signal from satellites for

positioning. The signal from satellite may not be received, or be weakened in room, nearby some big buildings, or under overhead bridges.

When the GPS device is receiving satellite signals, you will get signals from different satellites when you are in different places, this is called "Satellite Path", a "Satellite Path" only covers a range of 300 KM. If a "Satellite Path" is defined at place A, then turn off the device and move to another place beyond 300 KM away from A, the device is under another "Satellite Path". At this moment, the device needs to search for satellite signal again. To track the new "Satellite Path", this will take quite a long time. To save time for this searching, you may click "GPS Reset" button in menu of "GPS Testing" to clear the previous "Satellite Path".

It will be difficult and taking more time to catch positioning signal from satellite during high speed driving. It is suggested to search the positioning signal by stoping your car for a better and safer effect.

While charging the device, please only use the travel charger or car charger equipped by the manufacturer in its original package. Other chargers may cause damage to this device, and this damage is not covered by our warranty.

Features:

4.3"/4.8"/5" LCD TFT display with touch screen for control and input

Professional portable navigation system, UI design for mobile application, Convenient operation

Most popular Windows OS, World class CPU

SD card of extensible capacity for mapping data, MP4 video, MP3 music, Photo, and personal files

Map for major large and medium scale cities, detailed mapping data, real voice guidance, automatic smooth switching

Built-in high sensitive GPS receiving module and antenna, Faster GPS signal receiving and More accurate positioning

Prompt and accurate positioning applicable for GPS data collection, e.g. Area measuring

Prompt response for both cold and warm start; Re-capture of GPS signal just in 1 second on average, Accuracy of positioning: no more than 10 meters; Accuracy of timing: no more than 1 microsecond

Embedded Organizer/Calendar, personalized friendly touch panel handwriting control, record and plan personal schedule

Multimedia entertainment: Flash display, MP3 music, MP4 video, Photo viewing

Scientific calculation: embedded calculator, a good business assistant

The FM transmitter designed for use in a car with car stereo is not controlled with volume of the device.

Personalized function setting: Language selection, Backlight brightness adjustment; Power management, Coordination calibration.

A user friendly feature is GPS "hold On". With this feature, you may use the device for other applications, like music, e-Book, except for Falsh, by pressing Return button on the device to switch GPS application to background and keep it running without exiting from GPS application during the same time.

Warnings:

Please install the device in a right way to avoid driver's sight and airbag to be hindered. Any loss or damage of product, passengers, or other property caused by mistakes of mounting or installing of the device will be not covered within the warranty and not be the responsibility of the manufacturer.

Please not put on earphone and operate the device when you drive or ride a bike to ensure your safety.

Please consult with airline crew for application of the device if you want to use it during flight.

Please keep the device far away from strong magnetic field which may cause damage or malfunction to the device.

Please protect the device from being dropped, shocked or scratched on or by hard objects to avoid possible damages (scratches on the device face, loose contact of the battery, data loss or other hardware

part broken) to the device.

Please not use earphone with a continuous and large volume for long time, set the volume at a moderate loudness and use it not for a long time to avoid possible damage to your ear audibility.

Please not use chemical solution or cleaner to clean the device to avoid possible damage to the paint and polish of its surface.

When the device is used as a mobile storage device, please follow right procedures of file management operation to copy or transfer files. The warranty does not cover any mistake, or damage, or loss of files

It will be better for you to make a backup copy of your personal files in the device into your PC or laptop in time

It is prohibited to use higher voltage power supply, to bent or squeeze the power cord with big force so as to avoid possible damage and overheat resulting in fire

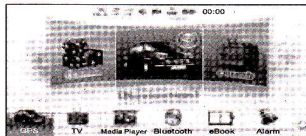
Never use wet hands to pull out or plug in the power plug to avoid possible electric shock

Not use the device in an environment over 60°C, or below -10°C, and with high humidity as well

The content of this manual is subject to definition, or interpretation, or modification from time to time for improvement on features and function without prior notice.

Illustrations on screen display:

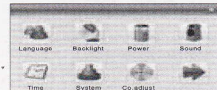
System UI(Projector Screen)



Under this UI, click icon down the screen to enter the function page. Then there will be Looped playback of cartoon, click it to entry this function. If you click the icons beside the function icon you can enjoy

the cartoons. If you click the arrow up the corner you can turn pages to view, which accompanies the cartoon at the same time.

Secondary UI(Projector Screen)



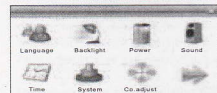
In this interface, click the icons on the screen to enter the corresponding functions; and click the arrow on the right bottom to turn the page. There will be an animation effect when turning the page.

System UI (Green background)



In this interface, click the small icon to switch to the corresponding page. Then, an animation is played circularly on the screen. Touch the screen or the small icon on the bottom to enter the function, and click the arrow on the right bottom to turn the page. There will be an animation effect when turning the page.

Secondary UI (Green background)



In this interface, click the icons on the screen to enter the corresponding functions; and click the arrow on the right bottom to turn the page. There will be an animation effect when turning the page.

Two kinds of theme interfaces are available. To change the theme, change it in the language setup under the system setup.

Battery Status Icon:



Full=====Drained

When the battery is at low power level, please charge it immediately to ensure the device work normally.

Charging:

Warnings for charging:

1. A new battery may be empty and not charged before you get the device.
2. To achieve the best performance of the battery, it is better to charge it up to 8 hours in the first three times, but not over 16 hours.
3. In normal charging with DC charger, please make sure to charge it for 2 – 2.5 hours to get it fully charged.

A new battery will reach its best performance after a number cycles of charging and discharging.

If the device is not used for long time, it is better to charge it to full capacity every 2 or 3 months during storage.

If not using the device for a long time, it is wise to take out the battery.

Charger Application:

DC Charger:

Take out the DC charger, plug it into the wall outlet with AC 220V(100V ~240V), then plug in the DC jack into the device DC-in jack.(see the illustration below).

Car Lighter Charger:

Please insert the car charger into car cigarette lighter jack, then plug the USB jack(see the illustration below).



When you use car charger, please start car engine first, then connect it to the device to avoid possible damage to the device due to overloaded pulse current during ignition.

Please pull it out when you stop the engine, and plug it in again after next ignition.

Power On/Off the device


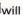

In power off status, slide the power switch to "ON" position to turn on the device, then the OSD will be displayed on screen.

Sleeping & Power-off

In power-on mode, press the power button on the device for 3-5 seconds

then the sleeping mode or confirmation for power-off screen will display as follows:



In this UI click the button  will be in sleeping mode, click the button  will power off; click the button  to exit the UI and back to normal operation.

Waking-up from the sleeping


When in sleeping mode, a short press on the power-on button of the device will wake up the system.

When in sleeping mode, all the procedure in operation will pause but will back to normal status after waking up.

Mobile TV

Introduction


Key features

- Digital TV live-in playback;
-  DVB-T
- Channel scanning, installation and zapping
- Channel list management
- Electronic Program Guide
- Screen snapshot
- Audio language setting

Launch Application

If no channel has been installed, auto channel scanning menu will be shown to do channel scanning firstly.
the default Region will be "All"



1. Tap "Scan" button to start channel scanning
 - a) During the scanning, will show current locked frequency.
 - b) If complete channel scanning or tap "Stop" button, will show "Completed"
2. Tap "Stop" will stop current channel scanning. The progress bar will also be set to completed status, and all installed channels will be saved.
3. Tap Return button  will close the dialog, and exit the channel scanning. All installed channel will not be saved if tap return button during channel scanning.
4. For details, please refer to [Channel scanning section](#).

If have saved channel, it will display [Playback Window](#) directly, and start to play the channel which be played last time.

TV Playback

Playback Window




This is the main menu of CIDANA Mobile TV Player. After launch the CIDANA Mobile TV player, it will start to play the channel which be played last time.

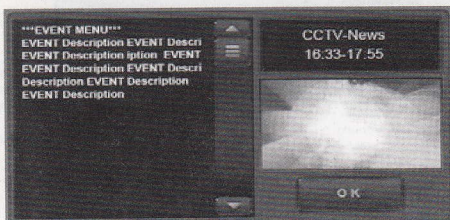
Index	GUI Component	Usage Description
1	CCTV-news	<ol style="list-style-type: none"> Usually display the current channel name If no channel be available, display "NO Channel Available" If no data from tuner, display "Searching for Signal..." If any error happens, display error info here. For details, please refer to error info section
2	08:42	Current Time. For example: 08:42. Note: This is the time information received from DVB-T stream
4	Signal Status:	<ol style="list-style-type: none"> Indicate current signal status. indicates no signal
5	X	Tap to close the application.
7	 	Tap to change current channel list. <ol style="list-style-type: none"> :TV channel list : Radio channel list : Favorite channel list 4. If there is no channel in the channel list, it

		can not change to this channel list.
8	Audio language 	<ol style="list-style-type: none"> Display current audio language. If no audio language information available, will show "N/A". Tap to switch audio language. The options include all available language. The current audio language should be updated in this area.
9		Tap to display EPG menu
10		Tap to change to previous channel.
11		Tap to change to next channel.
12		Tap to display program info menu, please refer to program details section
13		<ol style="list-style-type: none"> Tap to switch audio language. The options include all available language. The current audio language be updated in Audio and subtitle info area Tap the Audio icon will update audio language display area
14		Tap Setting Button will: <ol style="list-style-type: none"> Stop current playback Display Setting Menu
15		1) Tap to capture the current video frame picture.
16	 	Volume control: <ol style="list-style-type: none"> : Volume up : Mute, Un-Mute : Volume Down.
17	Present Event (Left)	Display current event info here. The info

	13:30-13:50 Present event	includes: 1) Start time 2) End time 3) Event name
18	Following Event (Right) 13:30-13:50 Following event	Display next event info here. The info includes: 1) Start time 2) End time 3) Event name

Program details

Present the program details screen by a tap on  button of TV main screen, which presents by a full screen display. It won't disappear until 'OK' button is taped.



Program details include program name, broadcasting period and

Index	GUI Component	Usage Description
1	<div> <div>***EVENT MENU***</div> <div>EVENT Description EVENT Descri</div> <div>EVENT Description ipion: EVENT</div> <div>EVENT Description EVENT Descri</div> <div>Description EVENT Description</div> <div>EVENT Description</div> </div>	This is the full introduction of current event. The introduction has to be fully shown. So this page is possible to be scrolled.

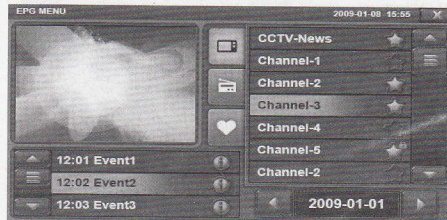
2	CCTV-News 16:33-17:55	Display the name and schedule of current event
---	--------------------------	--

EPG

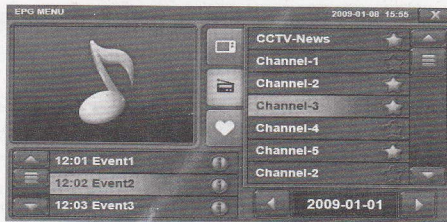
EPG Menu

After tap "EPG" button, it will display EPG menu:

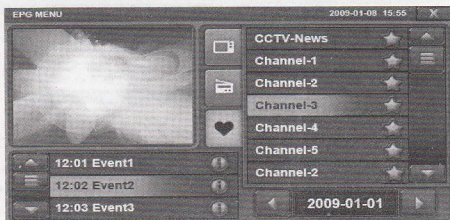
1. Show TV list:



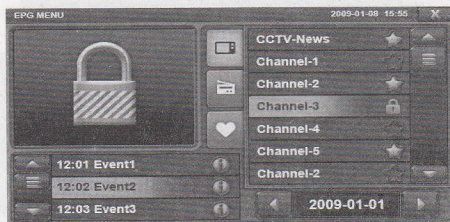
2. Show Audio list:



3. Show favorite channel list:























4. Show CA Channel:




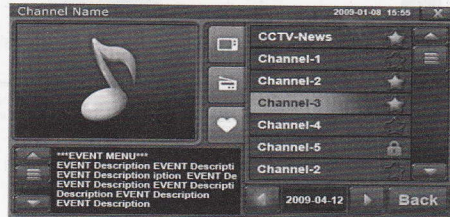
Index	GUI Component	Usage Description
1	EPG Menu	It is the title bar
2	Current Date	For example: 2009-1-8 15:55 Note: This is the time information received from DVB-T stream.
3		Tap to exit the ESG menu and back to playback window
5	Channel List (in the right)	1. This is the channel list. Select "TV", "Radio" and "MY" tab can display all TV channels, all Radio channels or favorite channels. 2. After display the EPG Menu, the focus is on the current playback channel, and current channel list (TV, Radio or favorite). For example, if currently it play channel 3 of TV channel list, then open EPG menu, it will shown




		as:
6	Channel List Tab: 	3. Tap the scroll bar can navigate channel list. 1. Tap to display TV Channel list 2. Tap to display Audio channel list. 3. Tap to display Favorite channel list 4. Switch the Tab will NOT change current channel list. 5. If current played channel is not in selected channel list, there is NO focus on any channel of this channel list.
7	Event List (in the left)	1. Event list shows the all the events of selected channel. The event list should be updated according to the selected channel. 2. After display the EPG Menu, the focus is in the current event (of corresponding channel), and the current event is displayed in the first item of the event list. For example, if current event is "Event 2", the event list should display as following:
8	Channel item: Selected Channel: Favorite channel:	1. This is the Channel item. 2. Tap channel item will : 1) Select the channel item 2) Change to corresponding channel 3) The content of ESG list will also be updated. 3. If the channel is already added to favorite channel list, the channel will show as:


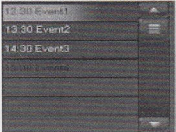

	 CA Channels: 	 4) If the channel is encrypted, the lock icon will be shown at the top right.
9	Event Item:  Current Event Item:  Select Event Item: 	1. This is the event list item 2. Current event (of corresponding channel) will be highlight as:  3. Tap the Info icon of event  will display the <u>event description</u> . 4. Tap the event list item will select event item, and selected item will shown as : 
10		Tap  or  icon, can display the events of pre day or next day. For example: 1) Tap  to switch to 2008-09-18, and display events info of that day. 2) Tap  to switch to 2008-09-20, and display events info of that day
11		This is the favorite icon. 1. Tap  will add corresponding channel into favorite channel list, and the icon will change to  2. Tap  will remove corresponding channel into favorite channel list, and the icon will change to  3. All channels marked as favorite will be shown in favorite channel list.
12		Tap info button will show the description of selected event. Please refer to <u>event info</u>

Event Info

Tap  icon of event item will display the description of the event in the left, and display all events of current channel in the right.



Index	GUI Component	Usage Description
1	Channel Name	Display current channel name here
2	2009-1-08 15:55	Current time in DVB-T stream
3		Tap to exit the ESG menu and back to playback window
4	Video Display area	1) Display channel video here. 2) If the channel is radio channel, radio icon will be shown in this Area.  3) If the channel is CA channel, locked icon will be shown in this Area.  4) Tap the video Display Area will close EPG

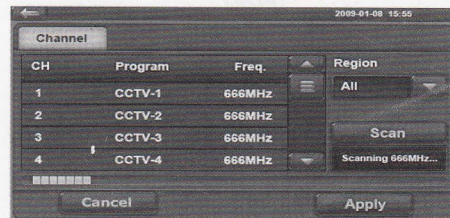
5	<p>Channel List Tab:</p> 	<p>menu and back to playback window.</p> <p>Will all be disabled in this menu</p>
6	<p>Event List (in the right)</p> 	<p>1. Will show shows the all the events of selected channel here</p> <p>2. After display this Menu, the focus is in the current event</p> <p>3. Tap the scroll bar can navigate the event list</p>
6	<p>Event Item:</p> <p>13:30 Event2</p> <p>Current Event Item:</p> <p>12:30 Event1</p> <p>Select Event Item:</p> <p>13:30 Event4</p>	<p>1. This is the event list item</p> <p>2. Current event will be highlight as:</p> <p>12:30 Event1</p> <p>3. Tap the event list item will display event description information in the left, and selected item will shown as :</p> <p>13:30 Event4</p> <p>4. The date of selected event will show in the bottom</p> <p>2009-01-01</p>
7	<p>***EVENT MENU***</p> <p>EVENT Description EVENT Description</p> <p>EVENT Description EVENT Description</p> <p>EVENT Description EVENT Description</p> <p>EVENT Description</p>	<p>Display event description here</p>
8	<p>2009-04-12</p> 	<p>Tap "←" or "→" icon, can display the events of pre day or next day. For example:</p> <p>1) Tap "←" to switch to 2009-04-11, and display events info of that day.</p>


		<p>2) Tap "→" to switch to 2009-04-13, and display events info of that day</p>
9	<p>Back</p>	<p>Tap "Back" button will back to EPG menu.</p>



Settings

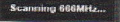



Setting Menu includes 3 sub-menus, Channel Scan, General Settings and About Sub-Menu.

Channel Scan



Index	GUI Component	Usage Description
1		<p>1. Tap to exit the Setting Menu, and back to playback window.</p> <p>2. If tap the exit button during the channel scanning, all installed channel will not be saved.</p> <p>3. All setting will not be saved if tap exit button to exit the setting menu</p>
2	<p>Region</p> <p>All</p>	<p>Select the region. The list includes:</p> <p>All (Default).</p> <p>Albania</p> <p>Andorra</p> <p>Australia</p> <p>Austria</p> <p>Belgium</p> <p>Brunei</p>


		Croatia Czech Republic Denmark Estonia Faroe Islands Finland France Germany Greece Hungary Italy Lithuania Luxembourg Malaysia Malta Mauritius Morocco Namibia Netherlands New Zealand Norway Poland Saudi Arabia Singapore Slovenia Spain Sweden Switzerland Taiwan Tunisia Ukraine United Kingdom Vietnam
3	 (Or Stop)	1. Tap "Scan" to Start a new Channel Scanning. And Scan Button will change to "Stop" Button after that. 2. Tap the "Stop" button will stop current channel scanning, and it will change to "Scan" button. The progress bar will also be set to completed status, and all installed channels will be saved. 3. If complete channel scanning, all installed channels will be saved.
4		Display all scanned channel in this area after channel scanning is finished.

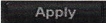
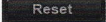
5.		1. Indicate which frequency currently scan. 2. If complete scanning, display "Scanning completed"
6		Indicate the scanning progress.
7		1) Tap "Apply" button to Save all the Settings Change and close setting menu 2) During the channel scanning, "Apply" button will be hidden.
8		1) Tap "Cancel" button will not save installed channels and close setting menu. 2) During the channel scanning, "Cancel" button will be hidden.

Note: During the channel scanning, can not change to other panels (General or about) of the setting menu.

General Setting



Index	GUI Component	Usage Description
1		1. Tap to exit the Setting Menu, and back to playback window. 2. If tap the exit button during the channel scanning, all installed channel will not be saved. 3. All setting will not be saved if tap exit button to exit the setting menu
1	Menu Language	Select Menu Language. The language includes: English (default) etc. Others TBD
2	Channel Display	Select to show or not show encrypted channel 1. Not show encrypted (default) 2. Show encrypted
3	Aspect Ratio	Select video display aspect ratio. The aspect ration

		Includes: 1. Stretch (Default) 2. Letter Box 3. Cropped Default value is Stretch
4		Tap "Apply" button to Save all the Settings Change, and close setting menu.
5		Tap "Reset" button will reset the setting to default value.


Note: Encrypted channel is defined as following:

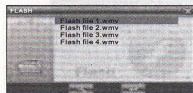
1. The channel descriptor reports it is an encrypted channel;
2. The channel descriptor reports it is not an 'encrypted channel BUT at least one multimedia stream is encrypted (either audio or video);


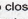

FLASH Play

This is for Flash file playing.

Operation:





On system main menu, click  icon, to get into Flash playing mode, then file selection UI will be shown on screen:







on this UI, click  button to search Flash files not in selected folder; click  button to close this window and exit Flash playing mode; double click, or select then click  button to open this selected file.




Control buttons in playing mode:

-  :Play, in Pause or Stop mode, press this button to play;
-  :Pause, in Play mode, pressing this button to pause;
-  :Stop, in Play mode, pressing this button to stop;
-  :Fast Forward, in Play mode, pressing this button to get fast forward once;

-  :Fast Retreat, in Play mode, pressing this button to fast retreat once;
-  :Full Screen, pressing this button for full screen play;
-  :Return, pressing this button to return back to system main menu from playing mode;

 :Sound Settings, Click the button to change into mute, in which

status the sound icon will change to  Click the mute icon to


back to its normal status and the sound icon will back to  at the same time.

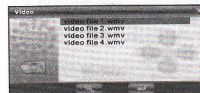
In full screen, tool bar will be hidden at screen bottom, you may get it by tapping on the screen.



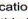
Video Playback

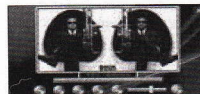
This feature is for video file playing, with the formats: AVI, MPEG, MPG, ASX, DAT, ASF and WMV.

Operation:








On system main menu, click  icon to enter into Video Playback application. Display of UI for file selection:



On this UI, click  button to search video files not listed in the appointed video file folder; Click  button to close and exit from Video Playback application; Double click or select and click  button to open and play this file.



UI and button definition:

-  Play
-  Pause
-  Stop
-  Close
-  Next
-  Previous
-  Full screen display

 Play Progression, drag to a point to start play

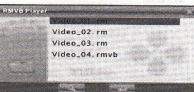
Volume tune, click anterior to set into mute status, click it again to resume
 In full screen display, the tool bar at screen bottom will be hidden, you can slightly tap on screen to get it.
 It will take a few minutes to search files when video play mode starts if this application has not been used for a long time.

RMVB Player

This function is special for RM and RMVB files.

Operation:

In the system UI, click the icon to enter the function of Media player, then click the "RM" to enter into the Video Player. And the screen will display as follows:



In the present UI, click the button to search the video files which you have saved beforetime. Click the button to exit the rmvb player, double-click the file you select or click the button you can open the file.



UI and button definition:

- Play
- Pause
- Stop
- Close
- Next
- Previous
- Full screen display
- Full screen Display (Stretch to the whole screen)

Play Progression, drag to a point to start play

Volume tune, click anterior to set into mute status, click it again to resume

Music Playback

This is for Music Playback with format of MP3, WMA, WAV.

Operation:

On system main menu, click icon to play music. Screen display is shown as the illustration below:



On this UI, click button to search for music files not in selected folder; click button to close this window and exit music play mode; double click, or select then click button to play this music file. Music play mode is displayed as following diagrams:



Button and control in Play Mode:

In music play mode, click button to pause, then it becomes Play

Button; At this time click button, music play mode will

return again; click button to stop; click button to jump to

the next one, click button to jump to the previous one; click

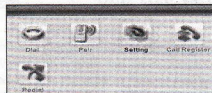
button to switch Repeat mode; click button to set mute, then this button will become, click again to recover.

Exit from Music play

Click button at the upper right corner to exit.

Bluetooth Function

The Bluetooth function is used for communication purpose. After the device is connected to a mobile phone with Bluetooth capability, you can operate the mobile phone functions on this system. He can dial or receive a call, view the call record of the mobile phone or perform other functions. Click the Bluetooth icon on the main interface and enter the following interface:



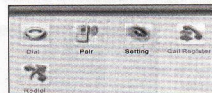
Enabling Bluetooth Function

In the first use of the Bluetooth function, you will see the interface shown above. Only Bluetooth Setting is available. Other functions are all unavailable in the gray-out state. At this time, enable the Bluetooth function. Click Bluetooth Setting to enter the setting interface, as shown in the following diagram:



On this interface, the PIN code is the identification code to connect the mobile phone. To connect the mobile phone, you need to enter this code on the mobile phone before the connection is established. The number can be set freely. Click the keypad icon behind the number and enter the input interface.

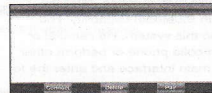
Select by ticking the check box ahead of the Enable Bluetooth Function to enable the function. The return to the upper-level menu and the following interface is displayed:



At this time, as the mobile phone is not connected, other mobile phone functions are unavailable.

Connecting Mobile Phone

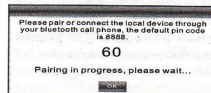
After the Bluetooth function is enabled, on the Bluetooth function interface, click the Pair icon to enter the Bluetooth equipment matching function, as shown in the following diagram:



If connection has been established in the past, the interface will list all

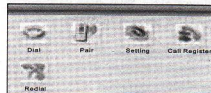
devices that have been connected in the past. Select a device and directly click the Connect button to connect to the device. The connecting process may take a few seconds. Be patient. Click the Delete button to delete all connected records.

In the case of first use, please click the Pair button at the right lower corner to enter the equipment search interface. Start the countdown of 60 seconds, as shown in the following diagram:



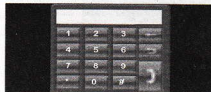
At this time, enable the Bluetooth function of the mobile phone to search the Bluetooth device. After it is found, enter the same PIN code as that displayed on the screen of this system and match the device. The screen will also display "You've matched your mobile phone successfully!"

At this moment, click OK to return to the upper-level interface. You'll see that all functions are available now, as shown in the following diagram:



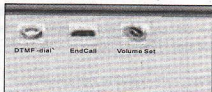
Dial Keypad

On the Bluetooth function interface, click the Dial icon to enter the Dial Keypad:



At this time, click the number keypad to enter the telephone number to be dialed, and then click the Dial button at the right lower corner to dial the number. Click the Back button to return to the upper-level function.

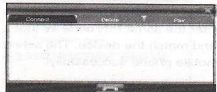
After the Dial button is clicked, the mobile phone enters the call state. The screen display is shown in the following diagram:



During the call, click the Disconnect button to end the call.

View Call Record of Mobile Phone

On the Bluetooth function interface, click the Call Register icon to enter the Call Record. To read the information of the mobile phone in this function, it may take some time. The screen display is shown in the following diagram:




At this time, click the three relevant buttons on the top of the screen to view incoming calls, received calls and dialed calls. Select an option, and click the Dial button in the lower part of the screen to dial the selected number.

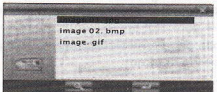
Not all Bluetooth mobile phones support the viewing of local call records through another device. If this function cannot help to view the call records of the mobile phone, please confirm whether your mobile phone provide this function.


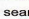

Photo Display

This is for Photo Display with format JPG stored in an SD card.

Operation:

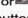
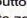
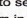
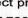
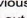
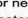
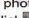
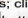
On system main menu, click  icon to enter Into Photo Display function. Display of UI for file selection:




On this UI, click  button to search photo files not listed in the appointed photo file folder; click  button to close current UI and exit Photo Display function; double click or select then click  button to

open or play this file. Display shown as the right illustration:



Then, click  or  button to select previous or next photos; click  or  button to zoom in or zoom out photo; click  button for full screen display. In full screen display, tap the screen again to exit full screen display; click  button to select display of different percentage. Click the button  you can Ctrl-Shift-R or Ctrl-R the photo.  is for selecting to set automatic or manual mode to turn page of display.


Exit Photo Display

Click the button  on upper right corner to exit.

Schedule Organizer

This is to Add, Edit, Delete schedule, and display the schedule in week, month, enable the user to find the scheduled agenda conveniently. Operation:

In the system UI, click the icon  to open Tools, under which you

can entry the Schedule by clicking the icon  show like below:

The illustration will



The screen display is in month display mode. The date to be completed for the matters on screen show in red color. Click the date to enter into day display mode; click "Week" to enter into week display mode.

Search by Date

Select and click a date on the screen to enter into Date display mode. Screen display is shown as in the illustration below:



Click time tag on date screen to check and revise a stored schedule or agenda. If the time tag is blank, then click it to set up a new schedule or agenda.

To create a new schedule, please refer to "Create New Schedule" in the following text for detailed procedure. Click [X] button on upper right corn to exit and return back to Search by Month

Search by Week

Click "Week" button to enter into week display mode. Screen display is shown as in the illustration below:

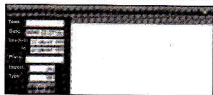


As shown in the illustration above, there will be a [X] icon if an agenda is set on the date and timing. Click [X] on screen to check or edit this agenda; Click the corresponding spot of date and time on which you want to add a new agenda to set it.

To create a new schedule, please refer to "Create New Schedule" in the following text for detailed procedure. Click [X] button on upper right corn to exit and return back to Search by Month.

Create New Schedule

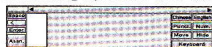
Operation: In mode of Search by Month, click "Add", or click timing tag under mode of Search by Date, or click dating and timing tag under mode of Search by Week to enter into Create New Schedule UI, screen display is shown as in the illustration below:



Click on the input field on the screen, and a soft keyboard appears as follows:



As shown in the picture, you can choose the input method from the last button at the bottom; click "Handwrite" to change to the handwriting input state; and click "Hide" to close the small keyboard. The handwriting input state is shown as follows:

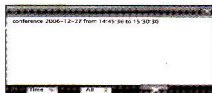


As shown in the picture, the middle empty area is the handwriting area. Click the button on the right side to change the input method, and click "Hide" to close the handwriting input panel; click "keyboard" to return to keyboard input state.

Input "Subject, Place, Content" you want to set; "Date, Time" can be input directly, or use adjustment buttons to set; "Priority, Type" can be selected in drag menu underneath them respectively. When finished, click "Save" to save the revised schedule, then return back to mode of Search by Month.

Delete Schedule

In mode of Search by Month, click "Delete" button at bottom of the screen to enter into delete mode, all schedule saved in the system will be listed out, screen display is shown as in the illustration below:



In this mode, click drag menu after "Time, All" to choose other list, select an agenda to be deleted, Then click [X] button, a dialogue block will pop up, select "OK" to delete this agenda. Click [X] button at upper right corner to exit Delete mode, then return to mode of Search by Month.


Exit mode of Schedule Organizer

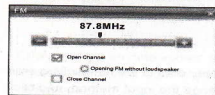
In mode of Search by Month, click [X] button at upper right corner of the screen to return to main menu of system.

FM Transmission (optional)



This feature is designed for transmitting the sound of this device at a set frequency to your car FM radio receiver, then you can hear from your car stereo system, and get it at volume set by the car stereo system.

Operation:

In the system UI open the Tools then find the icon  to activate FM. It will be illustrated like below:



Then you may select "Transmission On" or "Transmission Off", when select "Transmission On", you may also select device speaker on or off. It is suggested to close the device speaker when "Transmission On" is selected.

Press  or  button, or directly drag the slide bar to set FM transmission frequency, then turn on car radio FM receiver and tune it to the same frequency as the transmission, then you may get the sound from the device.

Staus Display:

When FM transmission is on, you may see an icon on the main menu screen:



FM transmission is on, the device speaker is off



FM transmission is on, the device speaker is on



FM transmission is off, the device speaker is on


In addition, on main menu, click these icon you may enter into FM transmission mode directly.

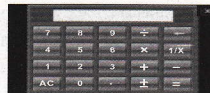
Calculator

This device has two calculators: Ordinary and Scientific calculator, able to be switched at any time, a good assistant for your work and study.


Operation:

In the system UI, click the icon  to open Tools, then find the icon

and click it  to activate the function of Calculator.



As shown in the above illustration, the calculators can be used like normal others. Click "Scientific/Ordinary" on the right to switch between Scientific Calculator and Ordinary Calculator; The unit of calculation of the right can be taken according to actual demand. Exit Calculator Mode

In Calculator mode, click  button at the upper right corner of the screen to exit and return to system main menu.

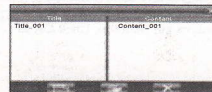
Notepad Function

With the Notepad function, you can record some instantaneous simple information as memo. It is a highly practical function.

Operation Procedure:


In the system UI, click the icon  to open Tools, then find the icon

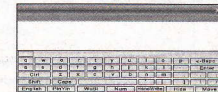
and click it  to entry Notepad Function. It will show like below:



As shown in the above diagram, the pane on the left of the interface shows the titles of the saved notes. Click a note title to display the full content on the content pane on the right.

Creating a Note

Operation Procedure: On the main interface of the Notepad function, click the  button to enter the state of adding notes. The screen display is shown in the following diagram:



The screen shows the soft keyboard when it is in input state.

As shown in the picture, you can choose the input method from the last button at the bottom; click "Handwrite" to change to the handwriting

input state; and click "Hide" to close the small keyboard. The handwriting input state is shown as follows:



As shown in the picture, the middle empty area is the handwriting area. Click the button on the right side to change the input method, and click "Hide" to close the handwriting input panel; click "keyboard" to return to keyboard input state.

Enter the content to be saved, hide the soft keypad, click the button in the lower part of the screen to save the entered content and return to the main interface of the Notepad function.

Edit/modify Notes Saved

On the main interface of the Notepad function, select the note to be modified, and then click the button in the lower part of the screen to enter the note editing state. The screen display and operation are all the same as "Creating a Note". After the modification, click the button to save it, and return to the main interface of the Notepad function.

Deleting a Note

On the main interface of the Notepad function, select the note to be deleted, and then click the button in the lower part of the screen. The screen pops up the dialog box to confirm the deletion. Click OK to delete the note.

Exiting Notepad Function

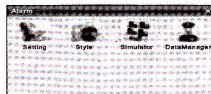
On the main interface of the Notepad function, click the button on the upper right corner to exit the Notepad function and return to the system main interface.

Alarm (Optional)

The system can give warning of the relevant monitoring devices on road to alert the safety drive.

Operating method:

In the system main interface, click button to enter the early warning system. The screen is shown as follows:



There are four modules: Setting, Style, Data manager, and Simulator. Click the icons on the interface to enter the corresponding functions.

Setting

It is to enable the early warning function and to set some warning parameters, such as warning distance and mode. As follows:



Click "Start Alarm" on the left bottom. The tick in the square frame means the electronic warning system is enabled; "Distance(H)": Set the warning distance in high-speed drive; "Distance(L)": Set the warning distance in low speed drive; "Have Sound": Cancel the warning when there is a certain distance away from the alarm point.

Style

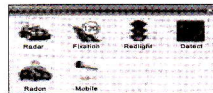
This is to set the type of warning of the warning system, as shown below:



You can enable different types of warning as required in this interface.

Simulator

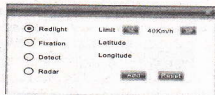
This is to simulate the alarm state of all kinds of warning items, as shown below:



Click the icon on the screen to experience the corresponding alarm.

DataManager

This function is to add the type of warning and the coordinate manually to perfect the warning data. It is a convenient and user-friendly function. The screen is shown as follows:




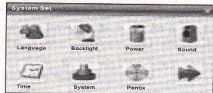
If you find the traffic monitoring facilities that the device does not contain when you are driving, you can add them to the database manually. Operations: First, the device should be in the place of monitoring facility, set the warning system to the above interface, and choose a type of warning; then, click "Add" to add it to the database. The warning system will give you an alarm next time you pass by this place.

System Setting

This is for system setting to change default setting of the system to your personal preference.

Operation:

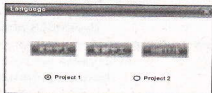
On system main menu, click  icon to enter into system setting. Screen display is shown as the illustration below:



In system setting, there 9 items for setting, click directly each item to change setting for it. Details will be described one by one below.

Language Setting

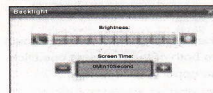
This is for setting of system language, screen display is shown as the illustration below:



Click the icons of the corresponding language in this interface or choose the interface project, the system will save the setup automatically when the setup is closed, and return to the previous menu. (The system will be required to restart after the interface project is changed.)

Backlight setting

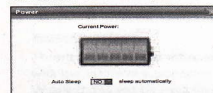
This is for changing backlight brightness of the device screen display, and time to start screen saver when no operation on the device. Screen display is shown as the illustration below:



Then, drag the slide block to set. Select No Screen Saver, then the screen saver will be disabled. After setting, close the current window to save.

Power Management

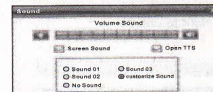
This is for setting auto power off and/or power saving mode, and time to start power off and/or power saving when no operation on the device.



In drag menu to select time, select "No" for disabling this feature. After setting, close the current window to save.

Sound Setting


This is for setting of beeping of power on, button operation on screen, and total volume. After entering into this UI, screen display is shown as the illustration below:



lick "Screen sound" in this interface to enable or disable the sound of screen operations, "Open TTS" is to enable the speech broadcasting function. TTS speech engine gives a clear broadcasting of the function name every time you enter into a function. English and Chinese speeches are supported for the moment. You can listen to the sound by clicking the start-up sound directly; and the general volume can be adjusted by dragging the slide directly. User-defined start-up music

In the present interface, click "customize Sound" then its dialog window will show up, illustrated as below:



"Nand Flash" is the inside memory of the device, "SDMMC" is the SD card. So the start-up music can be selected from both of them. Select one, click the button  to confirm, then back to the upper-level interface.

Time Setting

This is for setting time of the system. After entering into this UI, screen display is shown as the illustration below:



On this UI, click button on the screen to set. After setting, close the current window to save.

System Resources

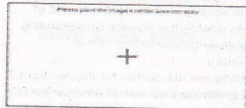
This is for checking system resources:

System	Flash	Store Mem
Version	EDR001	0N
Information	100	100
Total Memory	512MB	
Used Memory	100MB	
Free Memory	412MB	

On this UI, click directly at the item on the right to check.

Coordinates Calibration

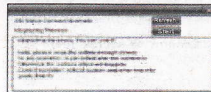
This is for calibrating the stylus coordinates on touch screen. After entering into this UI, screen display is shown as the illustration below:





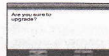
On this UI, use stylus to tap at the center of the cross, then tap on other crosses which will move after each tapping until finish and "Touch Screen Calibration Completed" is shown.



Update Logo

The function is for updating start-up logo of the device. Please be sure that you have stored the Logo pictures into the SD card. After entering into this UI you will see the interface shown below :



If there is no logo file in the current SD card, please copy the logo file into it or change another SD card having upgrade file, then click  button, you may see this upgrade file. During upgrade operation, click  button, then a dialogue frame will pop up, shown as the illustration below:

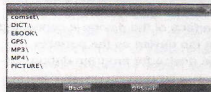


Then click  button to cancel upgrade, or click  to proceed with the upgrade processing.

Warning: please be sure that the battery is being full when you are updating. If not, please get the device charged.


GPS Path

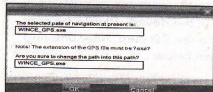
Using this function is to set GPS path for your navigation. Screen display will show as follows:



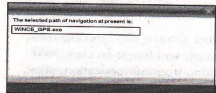
File folders of SD card will be listed on screen. Click a folder to open it. Select GPS Software


If there are two or more maps from different companies on an SD card, then this feature can help you select each of them easily.

The way to Select: In SD card directory, open the file folder to find the map to be used, select navigation software of .exe, (which has different names from each different company, please refer to details from each company of these navigation software, e.g. Careland has WINCE_GPS.exe), then select and click  button, a dialogue frame will pop up on screen, as it shown below:



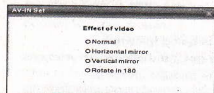
Then click "Cancel" button to abort; click "Confirm" to accept, then display on screen will be:



Click  button on the upper right corner to return to File Management UI.

AV-IN (Need to be equipped with camera)

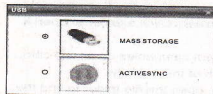
You can adjust the direction of the image displayed in the camera under AV-IN, it will illustrate as follows:



Under this interface you can select the items below the Effect of video directly, and then click it to exit the function.

USB

This is to set the mode when the USB interface of the device is connected to the computer, in which "U disk" is to set the device as the portable memory, and "ACTIVESYNC" is to use the device for program debug. Pictures are shown as below:



Click the desired connection mode and close the window to save the chosen mode.

Game

On system main menu, click  icon to enter into Game.

Screen display is shown as the illustration below:




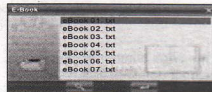
In this state, click the game icon on the screen to enter the game. For details on how to play the game, see the help information that will be available after you enter the game.




eBook Reading

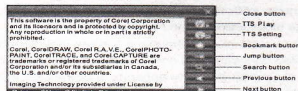
This if for eBook Reading with format .txt stored in an SD card.



Operation:

On system main menu, click  button to enter into eBook Reading application. Display of UI for file selection:



On this menu, click  button to search for txt files not in selected folder; click  button to close this window and exit file reading mode; double click button, or select then click  button to open this file. The screen display is shown as follows:




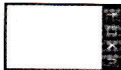
Click  or  button to turn page up or down; "Manual/Automatic" is set for selecting Manual or Automatic page turning; Font is for selecting letter size of display.




Bookmark

This is for bookmark in reading a voluminous article, marking or jumping to the last time marked page, a humanized design for convenience while reading.

Operation:


In eBook Reading mode, click right  button to enter into bookmark setting, display of dialogue block is shown as in the illustration below:






Click  button to set a bookmark for the current page. Directly click selected bookmark stored in the dialogue block to remove this bookmark; click  button to jump to the bookmarked page. Click  button to exit bookmark setting and return back to eBook Reading mode.

Jump to the appointed page


This is for jumping to the appointed page when reading a voluminous article and no bookmark is set.

Operation: In eBook Reading mode, click right  button to enter into Jump function, display of dialogue block is shown as in the illustration below:



Click the number key on screen to input the page number to jump to, when inputting, click  button to backspace for deleting; click  button to clear input block, after inputting page number click  button to jump to the page of selected number.

Search for specific word or phrase in eBook

This is for searching a specific word or phrase in the current reading article. In eBook Reading mode, click right  button on screen to jump out from the dialogue block shown as in the illustration below:



Click on the input field on the screen, and a soft keyboard appears as follows:



As shown in the picture, you can choose the input method from the last button at the bottom; click "Handwrite" to change to the handwriting input state; and click "Hide" to close the small keyboard. The


handwriting input state is shown as follows:

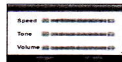



As shown in the picture, the middle empty area is the handwriting area. Click the button on the right side to change the input method, and click "Hide" to close the handwriting input panel; click "keyboard" to return to keyboard input state.

Enter the desired characters and click "Next" to start searching. Click this button again to search for the next one if the result is not up to the demand.

TTS speech broadcasting

TTS speech broadcasting function is able to read the article you are browsing. Click  button to set the parameter of speech broadcasting as follows:



TTS speech speed, tone, and volume are available to be adjusted. Click "OK" to save the setup and close the window when everything is set. Click  button to read the articles; the page will be turned automatically when reading.

Car-backing Rear View Function

This function is a fully automatic function. No manual operation is needed. Equipment Installation:

The receiving device of car-backing rear view is installed on the seat of the navigator. In that regard, before the use of the device, it should be installed on the vehicle mount bracket. The rear view camera should be installed in the professional vehicle refit shop.

This function needs the navigator as monitor. In that regard, when the car-backing rear view function is enabled, do not turn off the navigator. Once the vehicle is engaged in the backing gear, the navigator receives the signals, and automatically switches to the display image of the rear view camera. When the vehicle is not engaged in the backing gear, the navigator will switch to the previous work mode automatically.

Returning to Win CE Desktop

The device can return to the Win CE by pressing one key and implement the PDA functions.

Operation Procedure:

On the system main interface, click the  icon and the screen pops

up the confirmation dialog box. Click OK to return to the Win CE desktop. At this time, you can perform relevant operations.

Return to the navigation system from the Win CE desktop:

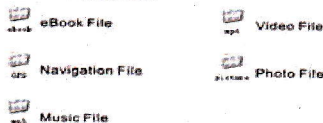
On the Win CE desktop, click the  icon to start the navigation system.

Video Input Function

The device supports the video input function. The video signals outputted by another device are transmitted to the device through a video cable. The device can work as monitor. Without any operation, the device will detect automatically the input of the video signals, and will automatically switch the current function to the video display state. After the connecting cable is disconnected, the system will return automatically to the previous work mode.

How to save and allocate files in SD card:

Usually, the files used by the device are saved in the appointed folders to ensure the access for embedded program of the device. You may save files into other folders or under root directory of the SD card. If the files are saved in the appointed folders, when opening the corresponding application, these files can be seen directly; If not in the folders, then you can not see them for the application, so that you need to click "Search" button, the system will search in all files in un-appointed folders until find it and display the result of search. For the sake of convenience, it is strongly suggested to save the files into the corresponding folders. The function and application of folders in SD card is listed below:



Attention: Navigation software must be saved into GPS directory!

Specifications

CPU	SIRF Atlas IV
Memory	2GB/4GB/8GB
Chip	GRF3I+
Antenna	Built-in folded antenna
Memory Card	Applicable for a Maximum up to 8GB SD card
Screen Type	TFT Touch Screen
Screen Size	4.3"/4.8"/5.0"/6.0"
Screen Color	65K colors
Dot Matrix Display	480*272 / 800x480
Extension Slot	SD
Battery Type	Removeable Li-polymer batter
Battery Capacity	950mAh

Trouble Shooter

No.	Fault	Possible Cause	Solutions
1	No power on	Battery drained (The screen has no further display after a blink when pressing power on button.)	Please refer to the description of battery charging in this manual, only use the enclosed charger to charge the device.
2	Dead Unit	The start interface stays on the screen for long time without changing. No display of the screen, or display on screen is frozen as any button is pressed.	Take out the battery, then put it back, start the device again. Press and hold the power on button for 5 seconds, then release it to power on. Take out the battery, then put it back, start the device again.
3	Error in upgrade	Dead or frozen during upgrade, display on the screen is frozen and no button works.	This fault can only be fixed by the manufacturer. Please return for repair.
4	Impossible to recharge	During charging, the green LED indicator of the device has no light or no charging sign displayed on the screen.	If the charger is connected properly and powered. Charger is damaged. Battery is damaged or full charged. It is normal when the green LED is lit on but the charging sign is not on the screen at the same time during charging.