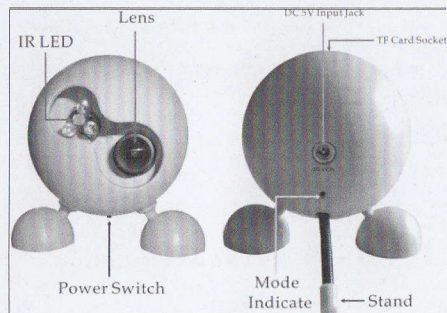


#### Function:

- Cartoon style, intruders can not easy be found, D.I.Y users to install, easy to operate.
- Can play on your computer and store recorded video. And simultaneously record the time and date.
- Immediately after boot is turned into the "smart" working condition, when the detected object when the work will start automatically.
- Memory using SD or TF card, maximum support 8GB.
- High compression ratio of video storage format. In the 2GB card can store 24 hours(in the test conditions).
- Image storage based on "FIFO" principle. Automatically overwrite the old data. And maintain data in real-time update.
- Image clarity, resolution VGA(640x48).
- With infrared night vision device can be in the evening to work.
- AC Adapter with power supply. To ensure that the work can continue.
- Can be widely used in home security, traffic monitoring. Security offices and shops.

#### Product Map:



#### Instructions:

#### \*The Machine Instructions:

- 1.Insert SD or TF card into socket.
- 2.Slide power switch to "on" position.
- 3.After boot, the state of the body will be shining a light at this time if the camera monitoring of objects within the scope of activities, the status indicator will be made every certain period of time (about 10s) flashes once, otherwise the indicator will be extinguished, and there is an object until the next activity will shine.
- 4.If you need to watch the data which Was recorded on SD/TF card through the PC, please turn off the machine power to remove the SD or TF Card, then connect to computer.
- 5 .You can use the IPVIEW to playback data which Was recorded on SD/TF card, Please refer to the next section describes.

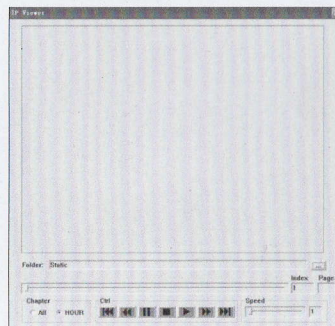
#### \*PC Instructions:

- 1.Put the distribution of the CD into the computer CD-ROM.
- 2.Copy the IPViewer.exe to the desktop. At this point the screen will appear on the following icon:

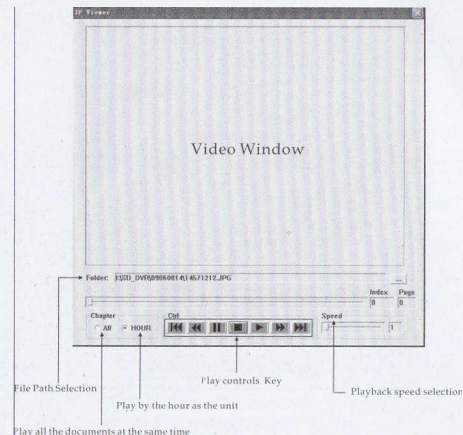


IPViewer.exe

- 3 Double-click the icon, the following interface will appear:



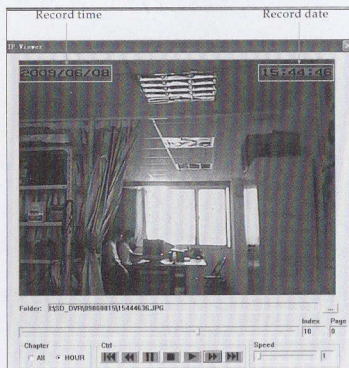
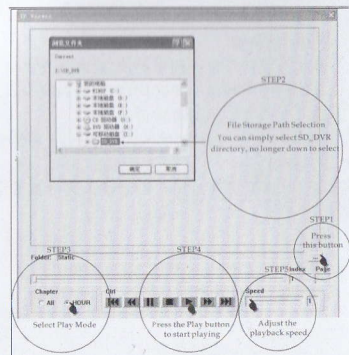
#### Instructions are as follows:



#### How to Play:

- ◇Connect SD/TF Card with a computer.
- ◇Running IPViewer.exe.
- ◇Press the "..." button, Select the path of the file which you wanna play, please refer to the next map:

## Steps:



## Time and date settings:

Create a TXT file on your computer.

Input time and date in the first line of the TXT file. Format is as follows:

--	--	--	--	--	--	--	--

Year : 00-99 Week : 01-07 Months : 01-12 Date : 01-31 hour : 00-23 Min : 00-59 Sec : 00-59

For example: 09050619135611 Means: 2009, Friday, June 19, 13:56:11.

### Note:

- 1.Can not have spaces.
- 2.Typing must proceed from the first line of the first word in the TXT file.
- 3.The TXT file name must be TIME.TXT, all the letters must be uppercase. And store the TXT file in the SD-DVR folder.
- 4.When this SD card is placed in the machine, the time and date will be automatically updated, TIME.EXE will also be automatically deleted

## Battery:

- 1.The machine using a lithium battery. It's enough to make the machine work 4.5hours Under normal conditions.
- 2.When the battery will be exhausted, Recorded image will appear on the spots and the horizontal line, At this time, please recharge the battery.
- 3.For safety considerations, be sure to use our matching charger. Charging time is about 3 hours.

## Specifications:

- ◇Video Format:Motion Jpeg, resolution:VGA(640\*480)
- ◇Frame rate:5FPS/S
- ◇Motion detection function of the image: The machine will record under the condition of an object movement. Delay of about 10s.
- ◇Storage mode:SD Card,( Maximum support 32GB) The following SD Card 2G Please use format FAT16 file format;SD Card 2G above please use the FAT16 file format format.
- ◇Power: 7V lithium battery or 5V Adapter.
- ◇Power consumption: 3.7V/150mA (working state) 3.7V/110Ma (standby state).

◇With RTC function: And time and date shown on the video shooting.

◇Time: 1G SD card can record 10 hours or more (Intelligent mode).

◇Data automatically replace function: When the memory card deposit will be automatically deleted upon expiry of the earliest recorded content.

## Frequently Asked Questions:

◇Can not boot?

Please check the battery charge. AC power adapter can be used to check it.

◇spots or horizontal line in the image?

When the battery runs out this situation will arise, Please charge to the battery in time.

◇After booting the machine status indicators flash three times without any reaction?

This shows that the machine is not inserted SD / TF Card, or SD/TF Card is broken.

◇Time is not accurate?

Please Follow the instructions in the instructions to adjust.

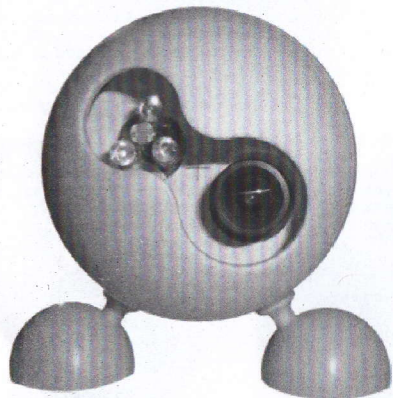
◇In the night vision mode, the image is black and white?

Opening night vision mode, in order to eliminate unnecessary interference, the machine will automatically remove the color in order to ensure image quality. In the light will be strong enough to restore color.





# 智能SD卡录像机



带夜视功能

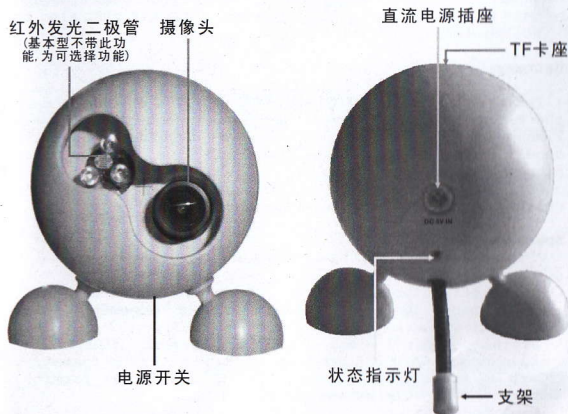
不带夜视功能

## 使用说明书

### 产品特点:

- \* 卡通造型, 不易被侵入者发现, 用户DIY安装, 操作简单.
- \* 可在电脑上回放和保存拍摄的影像, 并同步记录拍摄的时间和日期.
- \* 开机后立即自动进入“探测入侵”工作状态, 当检测到有人侵入并活动时将自动开始拍摄.
- \* 存储媒介采用SD或TF卡, 最大可支持8GB.
- \* 采用高压缩率的影像存储格式, 在2GB卡上可存储24小时(在测试条件下).
- \* 影像存储本着“先进先出”的原则, 自动覆盖旧的数据, 保持数据实时更新.
- \* 图像清晰, 分辨率为VGA (640x480).
- \* 内置锂离子电池, 可支持机器持续工作4.5小时(不带夜视版本测试).
- \* 配备外置电源变压器供电, 保证能支持持续的工作.
- \* 带红外夜视功能, 可在全黑的环境下记录影像(选配功能, 基本型不带).
- \* 可广泛应用于家庭安防, 行车监控, 办公室和店铺防盗等场合.

### 控制钮:



### 操作说明:

#### a. 本机操作:

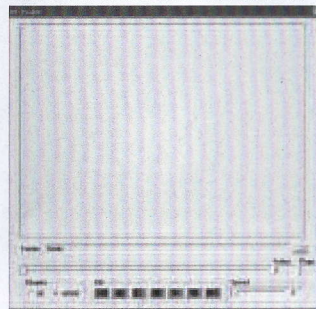
- \* 将SD或TF卡插入到相应的存储卡插座内.
- \* 拨动电源开关到“ON”的位置.
- \* 开机后, 机身上的状态指示灯将会闪亮一次, 此时若在摄像头监控范围内有物体活动, 该状态指示灯将每隔一定时间(约10S)闪亮一次, 否则该指示灯将会熄灭, 且直到下次有物体活动时才会闪亮.
- \* 如要在PC上观看SD或TF卡内的影像, 请关闭本机电源, 将SD或TF卡取出, 用读卡器和电脑进行连接.
- \* SD或TF卡记录的影像, 阁下可通过IPVIEW软件来进行回放, 具体使用方法请参照下节的介绍.

#### b. PC端(电脑)的操作:

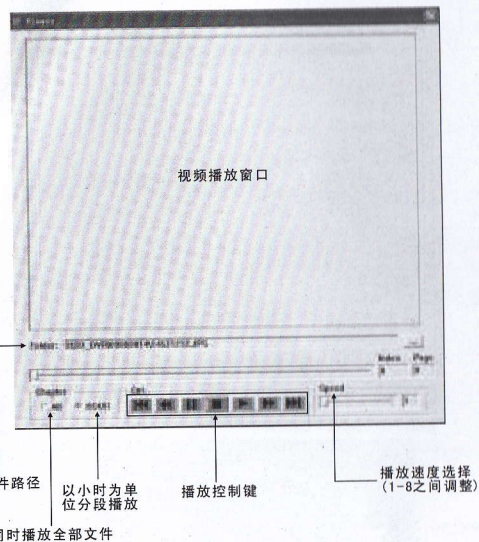
- \* 将随机配件中的CD-ROM放入电脑的光驱中.
- \* 将附件中的IPViewer.exe软件复制到电脑的DESKTOP(桌面)上, 此时将会在屏幕上出现以下图标:



- \* 双击该图标, 运行该程序后将出现以下的程序界面:



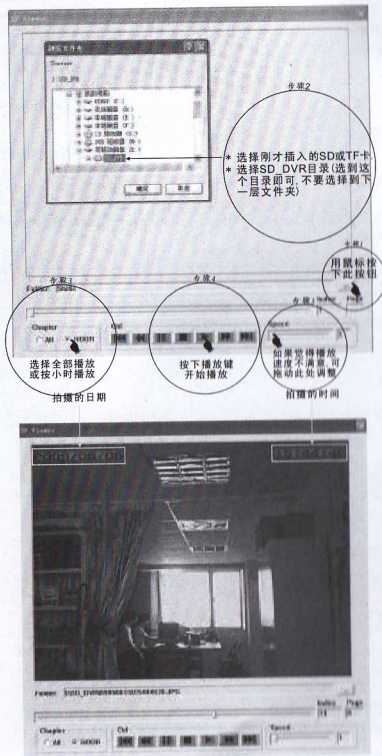
该软件的界面说明如下:



软件播放操作:

- \* 将SD或TF卡插入读卡器后连接到电脑上。
- \* 双击运行IPVIEW.EXE软件。
- \* 按下软件界面上“...”按钮，选择需要播放的文件路径，具体请参照下图。

软件操作步骤:



电池的使用:

- \* 本机内置锂离子电池,在一般状态下可供机器工作4.5小时。
- \* 当电池将耗尽时,拍摄的图像上将会出现斑点和横线等现象,此时请及时对电池进行充电。
- \* 为安全考虑,请您务必采用随机所配电源适配器进行充电,充电时间约为3小时。

日期和时间的设置:

- \* 用Windows下的应用程序(开始-程序-附件-记事本:记事本新建一个TXT文件。
- \* 在这个文件的第一行第一个字输入日期和时间信息,其格式如下:

公元年	星期	月	日	时	分	秒						
:00-99	:01-07	:01-12	:01-31	:00-23	:00-59	:00-59						

- \* 例如:09050619135611表示:2009年星期五6月19日13时56分11秒

注意事项:

1. 中间和前面都不能有空格。
  2. 输入位置一定要从第一行第一个字开始。
- \* 储存文件:文件名称一定是TIME.TXT,所有字母均要大写,并且将该文件存放在SD卡中SD\_DVR文件夹下。
  - \* 将此卡放入SD录像机中,开启电源,SD录像机的时间就会被更新,同时会自动删除SD卡中的TIME.TXT文件。

产品规格:

- \* 视频格式: Motion jpeg, 分辨率VGA(640x480)
- \* 帧率: 5FPS/S(请用HD SD存储卡)
- \* 运动图像侦测功能: 即侦测到运动的图像才开始录像,并自动延时10S后停止拍摄。

- \* 存储方式：SD卡，最大可支持到8G  
2G以下SD卡请用FAT16文件格式进行格式化  
2G以上SD卡请用FAT32文件格式进行格式化
- \* 电源供应：3.7V锂电池或5V Adapter
- \* 电源消耗：3.7V/150mA(工作时)，3.7V/110mA(待机时)
- \* 具备RTC功能，并将时间和日期叠加在拍摄的视频上
- \* 数据存储：1G Sd卡可录制10小时（智能状态下）
- \* 数据自动替换功能，当卡存储满后将会自动擦除最早录制的内容

### 常见问题：

不能开机？

请检查电池是否有电，可插上交流电源适配器来进行检查。

拍摄的图像上有斑点或横线？

当电池将耗尽时，拍摄的图像上将会出现斑点和横线等现象，此时请及时对电池进行充电。

开机后机器状态指示灯闪3下后无任何反应？

表示未插入存储卡以及存储卡损坏，或者插入的存储卡品质不良。

录像后重放的速度慢或不能播放？

请采用正品的SD或TF卡，为保证播放速度，请尽可能采用HC SD或TF卡。

新的存储卡需要按什么文件格式进行格式化？

对于4GB以上的存储卡，建议采用FAT32格式，对于4GB以下的存储卡，建议采用FAT16格式。

时间不准：

请按本说明书中的时间调整项来调整。

在夜视模式下图像是黑白的。

开启夜视模式后，为消除掉不必要的干扰，机器会自动将色彩去掉，以保证图像的效果，在光照足够强后，将自动恢复彩色。