

IBE-02 BLUETOOTH NFC HONEYCOMB HEADSET User Manual



Thanks for buying our product. Please read this user manual carefully before using the product in order to obtain correct using and storage methods. Hope you have an enjoyable experience.

Precautions

- ▶ Do not drop or strong impact your headset.
- ▶ Do not disassemble or modify your headset in any way, or the warranty will become invalid.
- ▶ Do not use your headset in humid environment. If liquid permeates headset that would damage the product.
- ▶ Use correct power supply to charge. Improper power supply to charge would damage headset or have fire risk.

Product Specification

Product Name : BLUETOOTH NFC HONEYCOMB HEADSET

Model Number : IBE-02

Size : 71*23*24mm

Weight : 12g

Material : ABS

Bluetooth Version : Bluetooth 4.0

Distance : 10M

Battery : 60mA

Working Time : 4.5H

Working Time : 15days

Charging voltage : DC5V

Working Current : 9mA

Charging Current : 60mA

Sleep Current : 25uA

Working Peak Current : 12mA

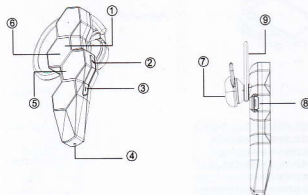
Compatibility : All Bluetooth audio devices , support A2DP/AVRCP/HFP

Function : Support NFC, voice YES/NO to identify if answer or reject incoming calls, voice instructions

Product Features

- ▶ Low power consumption design of Bluetooth 4.0, with high fidelity sound, leads to better user experience.
- ▶ Voice reminder for incoming calls; Voice instruction; Voice recognition to control: YES for answer and NO for reject.
- ▶ Support one Bluetooth headset connects with two mobile phones at the same time; Support NFC pairing. When pairing, NFC would be turned on automatically and Bluetooth would be turned off.

Product Layout



- | | | |
|-------------------|----------------------|----------------------|
| 1、HOME | 4、Microphone | 7、Telephone Receiver |
| 2、Volume up Key | 5、NFC Induction Area | 8、USB Charging Port |
| 3、Volume down Key | 6、Indicator Window | 9、Ear Pendant |

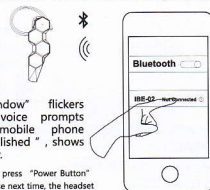
Instruction

Connect via Bluetooth Pairing

1、 Firstly long press "Power Button" on the mobile phone for around 5 seconds. When "Indicator Window" flickers red and blue lights alternately and voice prompts "The pairing is ready", it shows Bluetooth headset pairing successfully.



2、 Open Bluetooth of mobile phone or other device, and search named "IBE-02" device, then click "connect" after searching successfully.



3、 "Indicator Window" flickers blue light and voice prompts "Connect to mobile phone Connection is established", shows connect successfully.

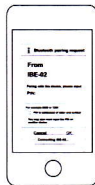
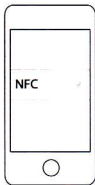
Note : Only need to long press "Power Button" for 3 seconds when you use next time, the headset will connect last used mobile phone or other device automatically.

Connect Via NFC Pairing

1、 Firstly long press "Power Button" on the mobile phone for around 5 seconds. When "Indicator Window" flickers red and blue lights alternately and voice prompts "?", it shows Bluetooth headset pairing successfully.

2. Open NFC of mobile phone or other device.

3. Put mobile phone NFC induction area zero-distance near Bluetooth headset NFC induction area for around 5 seconds. When it shows dialog box on the mobile phone, you can click "connect". (If dialog box pops and needs enter pairing code, then inputs "0000". Please ignore it if it do not pop)



Note : After pairing NFC, Bluetooth of mobile phone could be turned off when you do not use Bluetooth headset. Next time you use it, it only need to power on Bluetooth headset, and put mobile phone NFC induction area zero-distance near Bluetooth headset NFC induction area, then it could connect automatically, which need not open Bluetooth manually. When they are under connecting status, putting both near again, then Bluetooth headset could be disconnected automatically and Bluetooth of mobile phone could be turned off automatically in order to save power.

Function

1、Voice to answer and reject

Only need to say "YES" on the Bluetooth headset when it calls, it could answer call automatically. And only need to say "No", it could reject automatically.

2、Control pause/play/answer/reject

Under playing music status, short press "Power Button", music pauses. Then short press "Power Button" again, music resumes. When it calls, you can short press "Power Button" to answer. Under talking, short press "Power Button" to hang up the phone.

3、Function of the power button

In shutdown status, long press 3 seconds to start up, 5 seconds to start up and pairing; In the call, short press to answer incoming call, long press 2 seconds to reject the phone; On the line or dialing status, short press to hang up or stop dialing; When standby, double-click to call back the last dialed number; In music status, short press to pause or play music.

4、Control volume up and down / Control last and next song

When it is playing music and talking, short press "+" to up volume and "-" to down volume. Under playing music status, long pressing "+" to next song, and long pressing "-" to last song.

5、Indicator light status

Charging---Red constant light; Saturation charging ---Blue constant light; Pairing Bluetooth---Red and blue light flicker alternately; Successful connecting or backing to connect---Blue light flicker.

6、1 paired with 2

After two mobile phones are successfully connected with Bluetooth headset, headset could connect the phones automatically when headset is open and two phones are within 10 meters. That is to say, audio message of mobile phone could transfer to the Bluetooth headset for receiving and usage.

Frequently Asked Questions

Q1: Why won't my Bluetooth headset pair with my mobile phone?

- A: 1) Please check if headset is in pairing mode. Next open Bluetooth on mobile phone to search devices and connect.
2) Please check if power of headset is sufficient. Lack of power also would not connect. Please get headset fully charged before using.

Q2: Why is my mobile phone pairing invalid or failed by using NFC?

- A: Please check if NFC on your mobile phone is open. Please check if headset NFC is under pairing mode. If mobile phone NFC connects with headset for the first time, the headset must be in pairing mode.

Note: NFC function is unavailable when mobilephone or tablet is under screen locked status. NFC only can be used after unlocking the screen.

Q3: There is no response as I say "YES" or "NO" under call status. Or only response after trying few times.

- A: There is difference for everybody's pronunciation standard. At present voice recognition technology is not so mature. First of all standard pronunciation can be recognized. Please speak louder or put microphone aimed at your pronunciation direction.

Package Contents:

NFC Bluetooth Headset / USB cable / User Manual

After-sales Service

Provide one year warranty