

Switch specifications

Singal live wire controlled detail specifications

RATED OPERATIONAL VOLTAGE	110V-240V AC
CAPABILITY ALLOWANCE	-15%~+10%
LOAD POWER	3-800W PER GANG
WORKING TEMPERATURE	-20°C~+70°C
RELATIVE HUMIDITY(NON-CONDENSING)	10%~93%(NON-CONDENSING)
OPERATING FREQUENCY	50/60HZ
ENERGY CONSUMPTION	0.02W
LOAD POWER	≤2000W
LIFE TIME	10.0000 TIMES
SIZE	86*86MM

LED Transofmer is needed to connect when you use a LED lamp,whose power is less than 3W.

2. APPLICABLE LOAD

All load types that are no greater than the maximum load capacity of this series of switch. (Filament lamp, transformer drive load, motor, fluorescent lamp and so on.)

Remarks: Touch-key and blue background light. (with indicator light)

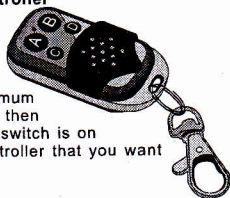
Usage Instruction for Remote Switch and Remote controller

1st Step

Get power on and turn on the matched remote touch switch which is on loading status.

2nd Step

Press the matched touch point on remote switch for minimum 5seconds (the light will off), until the light on again and then release the switch touch point. Now, the touch point on switch is on matching status. 3rd Step Press the button on remote controller that you want (A, B or C), now matching process is over.



Remarks

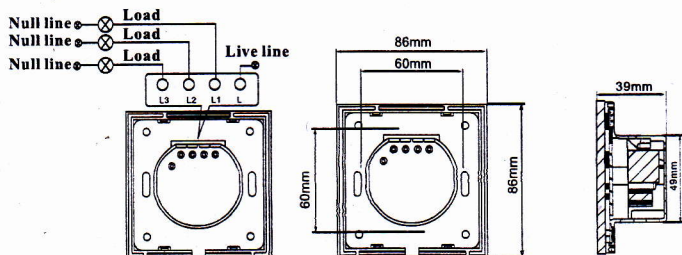
1. There are total four buttons on remote controller, A button, B button and D button.

A, B and C buttons can match with the remote touch switch. D button is off button, which can close all lights that matched with A, B and C buttons.

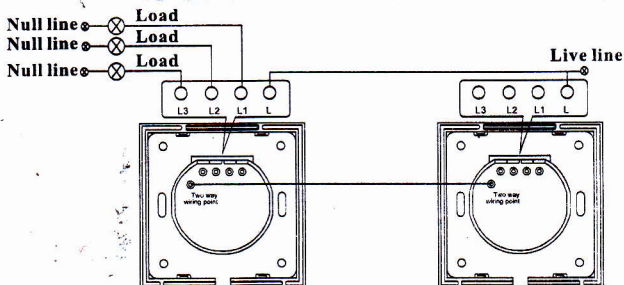
2. Each touch point on remote touch switch can match with 8 remote controllers. This function can help you to control your lights. But one button on remote controller can only match one touch point of remote touch switch.

3. Canceling method of matching remote touch switch and remote controller: Press the touch point on the remote touch switch that you want to cancel matching for 5seconds or more, it will cancel.

Wiring Diagram



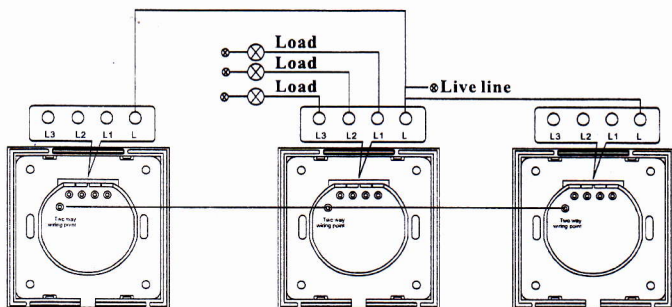
power type 2 way connection diagram



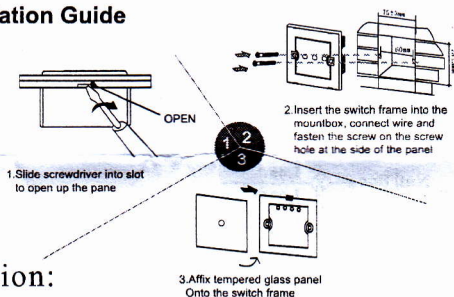
The common fault diagnosis:

If there is something wrong when you use the touch switch, please check it in the following steps:

- (1) Please refer to the wiring diagram, and make sure the wire connection is right.
- (2) Please ensure the load' total power in within the normal rated power.



Switch Box Installation Guide



! Special Caution:

When installation of single live wire touch switch, please use one 25W(maximum) energy saving light to test first to avoid the wrong connection of A and B communication lines and damage the switch. If the energy saving light flash continuously and the switch cannot start as normal, it shows that the A and B communication lines do not connect correctly. In this way, please check the wire connection. If the energy saving light does not flash and switch also start normally, it shows that A and B communication lines connect correctly, then can increase the load power.