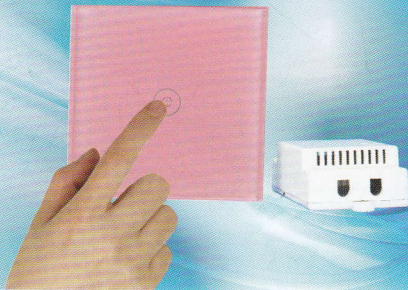


Wireless Remote Control Switch

operating instruction



Applicable load

This series of switches is not greater than the maximum load capacity of all load types (Incandescent, energy saving lamps, fluorescent lamps , ceiling lamps , LED lamps and other common lamps)

Manual for models

Flat panel touch switches (one-line , two-line , three-line)

Single line high-power flat-panel touch switches

Switching Specifications

Rated voltage : 100V-240VAC

Operating frequency : 50/60Hz

Performance Tolerance :85-275V (suitable for all countries worldwide voltage standard)

Standby power consumption : a road $\leq 2\text{mW}$, 2 Lu $\leq 3\text{mW}$, 3 Lu $\leq 5\text{mW}$

Load power : single loop (5-600W), double loop (5-1200W, Each circuit $\leq 600\text{W}$), three loops (5-1800W, each circuit $\leq 600\text{W}$), High-power single -loop series (5-3000W)

Life: 10,0000 times

Dimensions : 86x86X32mm

Remote control specification parameters

Battery: 1 pcs 23A/12v battery

Standby power consumption: line 1 $\leq 0.04\text{mW}$, line 2 $\leq 0.08\text{mW}$, line 3 $\leq 0.12\text{mW}$

Remote control distance: 30 meters or less

Spectrum: 433.92 MHz

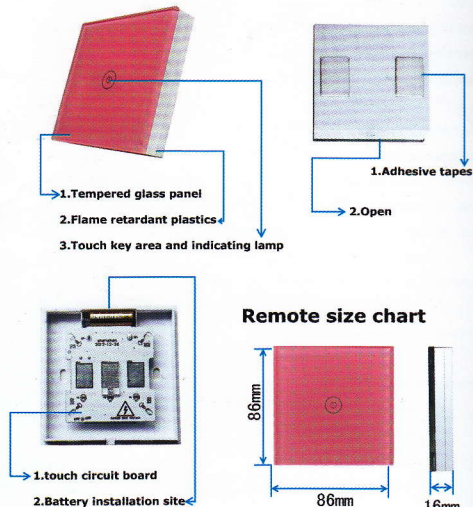
Installation dimensions : 86 x86x16mm

Conditions of Use

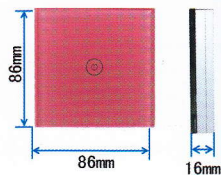
Working environment: Operating temperature: 0 °C -45 °C

Relative Humidity: 10% -93% (non-condensing)

Structure of remote controller

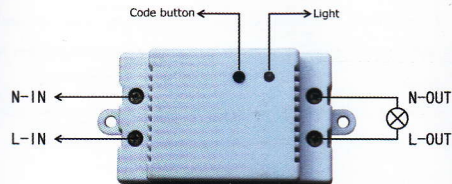


Remote size chart

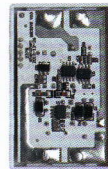


2

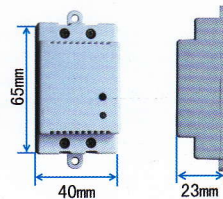
Installation of the receiver



The receiver circuit diagram

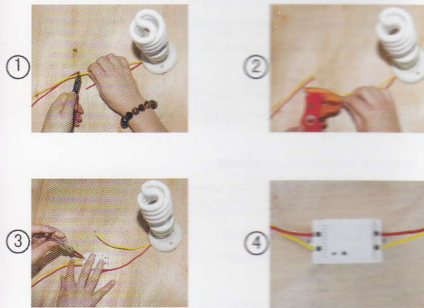


The receiver size



3

Installation instructions (Figure)



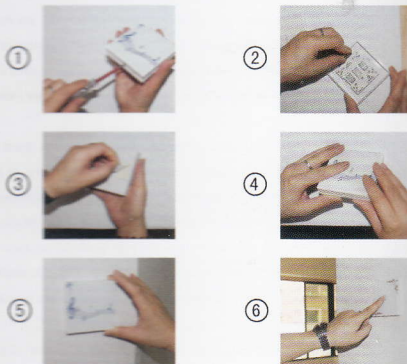
1, cut off the lamp's "-" line of fire

2, Stripping peeled length about 8mm (diameter :1-9mm (8-17AWG, Access to wiring inside the pillars line maybe are single strand or strands)

3, the wiring

4 secure the switch in the appropriate position lamps with screws

Remote control installation instructions



1, pry the remote control panel

2, installing battery according to the positive and negative logo

3, cover panel

4, tear the end of paper at the back of the remote control

5, paste freely in the location specified by the user

6, remote after 15 second switch is automatically initialized

Receiver and the remote control before pairing code

Please make sure the following three points

1, check whether the receiver is successfully installed and has power or not.

(touching switch manually control load switch via the buttons on the control box.)

2, check whether the load is suitable for the product requirements

3, check whether remote control batteries are installed correctly or not.

(Touching area's backlit indicator lights.)

Pairing the remote control settings

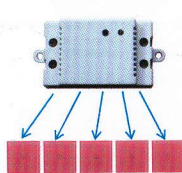
1, keep pressing the receiver's button to be paired code 3 seconds later, LED flash on the code, switch to enter pairing mode.

2, click on the remote control's touch keys to be paired, key regional indicator lights, release the hand, LED backlight is off. Indicator light on the receiver stops flashing and enters steady state, exit pairing state automatically, the pairing is successful.

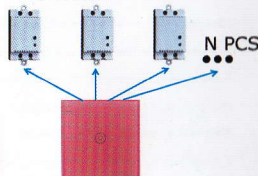
3, etc., can be performed on the remote control for up to five pairs. If pairing of the sixth remote controller, the remote control automatically cleared first pair.

This product pairing, enabling a switch to be controlled by maximum 5 pcs remote control at the same time. A remote control can control the distance range of the remote control's any number of receivers. When the receiver is paired with more than two remote control, you can achieve dual control, Mutual control, and multi-control function.

A receiver can simultaneously
By 5 remote control



A remote control can control the distance
range of the remote control's any number
of receivers



When the receiver is paired with more than two remote control, you can achieve dual control, Mutual control, and multi-control function.

Clear code setting

Keep pressing the receiver's button to be paired code 3 seconds later, led flash, then release the hand, continue to press and hold 3 seconds, LED indicator light converted to the flashes slowly state. Clear code successfully after losing the hand, the lifting of all pairing. This receiver has power and memory function, the pairing is successful, power outages, disassembly, no need to reinstall the installation of the code. Unless you manually clear code, unpair.

Matters needing attention

1. Be sure to turn off the power before the installation and removal, you must ask a professional electrician for construction. This switch is only suitable for indoor use, such as installed outdoors, Please according to the professional electrician to guide the operation. At the same time try to avoid installed in hot, dusty, strong electromagnetic interference environment.
2. line laying, please follow the relevant standards and requirements, check before commissioning the line if there is open circuit or short circuit conditions, so as to avoid internal device performance degradation, severe does not work properly.
3. For your safety, we recommend that you replace the touch screen off the power, cut off the power if the case does not replace the touch screen Do not touch the metal shrapnel and circuit boards, otherwise there is danger of electric shock.
4. please use the supplied fuse or fuse the same parameters, the use of substandard fuses easily cause a fire.
5. the installation and use of this product should pay attention to water, steam-proof, anti-knocking, or easily cause failure and electric shock.
6. cleaning, use a dry cloth to wipe, disable wet or containing chemical detergent cloth as this may cause electric shock and corrosion damage products
7. the product can be specified with a load and limited to manual load
8. When paste remote control, try to use a clean, smooth and flat, to prevent a long time due to loss, damage to the product or other security incidents.

Common Faults and troubleshooting

Common faults and troubleshooting

No response after power touch switch, you can not control the lamp

- 1, check whether the power is turned on, the voltage is too low.
- 2, light damage, lamps are compatible with the switch type, whether poor contact.
- 3, check whether the wiring is correct, is loose, key in this process is invalid.

The lamps are automatically turned off phenomenon

Check if there is power electronic device close to the switch.

You can not open fixtures immediately

- 1, check whether it is live or live replacement panel installation, (this state switch will automatically initializes 15 seconds to work properly.)
- 2, there is a strong possibility for the grid disturbance caused when the reset state, wait 15 seconds before attempting to operate.

Due to overload, short circuit causing the lamp is not lit

- 1, first cut off the power, remove the short and overload to normal, check the insurance if blown replace the fuse.
- 2, open the switch housing to see if there burned phenomenon, this case please contact your electrician or dealer handling.

Fluorescent lamps or energy-saving lamps, does not start or intermittent flashes

1, if the switch is controlled by inductive fluorescent lamp load, if not start, use a qualified genuine starter, starter genuine internal consumption spark capacitors, long service life.

2, check whether the load is normal load in the product range, if not please install suitable for this switch controls the load.

Switching surface has obvious thermal

May be caused by the lamp power is too large, please power users in product labeling range.