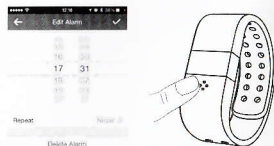


# ERI

Fitness Activity Tracker  
Product Manual



## DIGICare



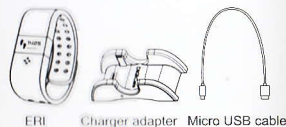
### Dismissing silent alarms

Your ERI will vibrate when your silent alarm goes off and the screen will flash. You can dismiss the alarm by touching the four dots located below the ERI screen. If you do not dismiss the alarm, it will repeat.

### Tracking sleep with ERI

To put your ERI in tracking sleep mode, press and hold the button until a night icon appears, and long press the button again. When you complete tracking sleep, press and hold the button until a morning icon appears, press the button again confirms to turn off tracking sleep mode.

### What's included



### How to put your ERI on

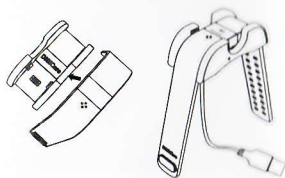


### Battery life

Your ERI contains a rechargeable lithium-polymer battery. With normal use, your fully charged ERI should last about 7 to 10 days before needing a charge.

### Charging your ERI

To charge your ERI, plug the ERI to the charger adapter, plug the charging cable into the Micro USB port of the charger adapter, plug the USB port on your computer.



### Setting up ERI Using a Mobile Device

#### Mobile device requirements

You can set up and sync your ERI using select mobile devices that support Bluetooth 4.0 technology. To see if your mobile device is compatible with your ERI, please visit <http://www.digi-care.com/le-supported-devices-for-syncing/c2lw>

#### Installing the DIGICare app

You can find the DIGICare app on the App store by searching for "DIGICare". If you already have the DIGICare app installed, check for available updates to make sure you have the latest version.

#### Pairing

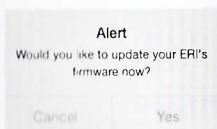
Unlike most Bluetooth accessories, your ERI must be paired directly through the DIGICare app, not through the Settings app on your mobile device.

### Memory

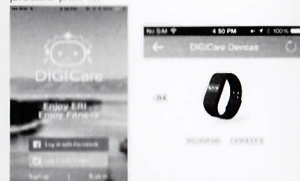
When you sync your ERI, your activity data is uploaded to your DIGICare's server. Your ERI holds detailed minute-by-minute information for the most recent 7 days, and up to 30 days of daily activity summaries.

### Update ERI

Update checking occurs automatically every time you open the DIGICare app. If there's a new ERI firmware, a prompt will popup, then click Yes, the ERI will update automatically.



1. Open the DIGICare app.
2. Create an account.
3. Follow the onscreen prompts to power on your ERI. The app will begin searching for it.
4. Once the ERI is found, touch the ERI icon to connect. If there's a prompts ask you whether pair your device or not, please pair it.



### Syncing

Syncing occurs automatically every time you open the DIGICare app, as long as Bluetooth is enabled in the settings of your mobile device.

### Tracking with ERI

Your ERI tracks:



Your ERI automatically tracks your steps taken, distance traveled, hour slept, quality of sleep, active minutes, and calories burned throughout the day.

### Using Silent Alarms

Your ERI gently vibrates to wake or alert you with its silent alarm feature. You can set alarms using your a compatible mobile device.

### ERI General Information & Specifications

Weight: 22g / 0.776oz  
Size: 151-210mm / 5.94-8.28in  
Width: 20mm / 0.778in  
Thickness: 8.5mm / 0.335in

Operating Temperature: 20 to 45°C  
Store Temperature: -30 to 60°C  
Water Resistant: IPX 67  
Maximum Operating Altitude: 9144m

FCC ID: 2ACC4DC168

Product description: ERI  
Model : DC-WT-01  
Voltage: DC 3.7V  
DIGICare Technology Limited



### Return policy and warranty

Please visit the DIGICare's website at <http://www.digi-care.com/#return-policy-and-warranty/co8>

# DIGICare

## Safety Statement

### Important Safety Instructions

- Read these instructions.
- Keep these instructions.
- Heed all warnings
- Follow all instructions
- Do not attempt to open the tracker. Substances contained in this product and/or its battery may damage the environment and/or human health if handled and disposed of improperly.
- Do not tamper with your ERI.
- Do not use abrasive cleaners to clean your ERI.
- Do not place your ERI in a Dishwasher, Washing Machine or Dryer.
- Do not expose your ERI to extremely high or low temperatures.
- Do not use your ERI in a sauna or steam room.
- Do not leave your ERI in direct sunlight for an extended period of time.
- Do not leave your ERI near open flames.
- Do not dispose of your ERI in a fire. The battery could explode.

- Do not attempt to disassemble your ERI; it does not contain serviceable components.
- Never allow children or pets to play with the ERI; the small components may be a choking hazard!

## Built-in Battery Precautions

### Built-in Battery Precautions

- Do not attempt to replace your ERI's battery. It is built-in and not changeable.
- Charge your ERI using a certified computer, powered hub or power supply.
- Charge the battery in accordance with the instructions supplied with this guide.
- Use only the charger adapter that shipped with your product to charge the battery.

## Disposal and Recycling Information

The symbol on the product or its packaging signifies that this product has to be disposed separately from ordinary household wastes at its end of life. Please kindly be aware that this is your responsibility

to dispose electronic equipment at recycling centers so as to help conserve natural resources. Each country in the European Union should have its collection centers for electrical and electronic equipment recycling. For information about your recycling drop off point, please contact your local electrical and electronic equipment waste management authority or the retailer where you bought the product.

Le symbole sur le produit ou sur son emballage signifie que ce produit à la fin de sa vie doit être recyclé séparément des déchets ménagers ordinaires. Notez que ceci est votre responsabilité d'éliminer les équipements électroniques à des centres de recyclage afin d'aider à préserver les ressources naturelles. Chaque pays de l'Union européenne a ses centres de collecte et de recyclage pour le recyclage des équipements électriques et électroniques. Pour plus d'informations ou trouver un centre de recyclage, contactez votre commune ou le magasin où vous avez acheté le produit.

- Do not dispose of the ERI with household waste.
- Batteries are not to be disposed of in municipal waste stream and require separate collection.
- Disposal of the packaging and your ERI should be done in accordance with local regulations.



Li-ion



**DIGICare**