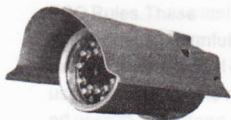
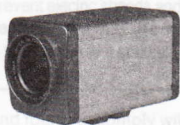
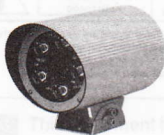


WARNING

MANUAL

CCD CAMERA INSTRUCTION



COLOR

B/W

WARNING



SA1966

To prevent fire or shock hazard, do not expose the unit to rain or moisture.

The symbol is intended to alert the user to the presence of important operating and maintenance (servicing) instructions in the literature accompanying the appliance.



SA1965

The symbol is intended to alert the user to the presence of uninsulated "dangerous voltage" within the product's enclosure that may be of sufficient magnitude to constitute a risk of electric shock to persons.



CAUTION:

To prevent electric shocks and risk of fire hazards, do NOT use other than specified power source.

WARNING This equipment has been tested and found to comply with the limits for a Class A digital device. Pursuant to part 15 of the FCC Rules. These limits are designed to provide reasonable protection against harmful interference when the equipment is operated in a commercial environment. This equipment generates, uses, and can radiate radio frequency energy and if not installed and used in accordance with the instruction manual, may cause harmful interference to radio communications. Operation of this equipment in a residential area is likely to cause harmful interference in which case the user will be required to correct the interference at his own expense.

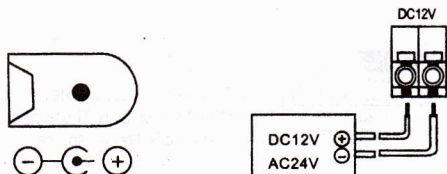
CAUTION Any changes or modifications in construction of this device which are not expressly approved by the party responsible for compliance could void the user's authority to operate the equipment

SYSTEM FUNCTION 1-2

1. VIDEO OUTPUT CONNECTOR(BNC)

1.0Vp-p75 composite video signal is provided at this connector.

2. POWER INPUT CONNECTOR(SCREW TERMINAL)



DC12V

this terminal accepts DC 12V/AC 24V

Power source

Recommended Power Supply For

Color camera:750-800mA DC

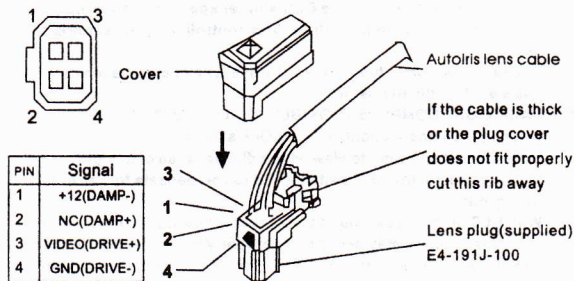
B/W camera:300-800mA DC

Regulated Power Supplies are recommendable

SYSTEM FUNCTION 3-4

■ 3. Autoiris lens(LENS)DC/VIDEO Switch

■ 4. AUTOIRIS LENS CONNECTOR(AUTO IRIS)



- 5. AUTO TRACKING WHITE BALANCE(ATW)
- 6. AUTO GAIN CONTROL(AGC) ON/OFF SWITCH
- 7. EE/AL SWITCH

This switch is used to select EE (electronic exposure of ELC electronic light control) mode or AL (automatic lens of ALC automatic light control) mode.

In the EE mode, a continuously variable electronic shutter is employed to automatically control the exposure time of the CCD image sensor according to the incoming light level. With this mode selected, a fixed or manual iris lens can be used instead of an autoiris lens in the AI mode. The CCD shutter speed is fixed to 1/60 (50)sec. and the incoming light level is controlled by the autoiris lens.

To use a video-drive type of the DC-drive type of autoiris lens, set this switch to the AI position.

- 8. BACK LIGHT COMPENSATION(BLC) ON/OFF SWITCH

Back light compensation(BLC) ON/OFF switch

If the subject you wish to view is too dim because of a bright background, set the BLC switch to ON to compensate for the bright background.

With BLC on, the background brightness may saturate in some cases. This function may not operate properly if the object is too small compared to the area of the background. This function can be used with either the linear shutter(EE mode) or an autoiris lens (All lens mode).

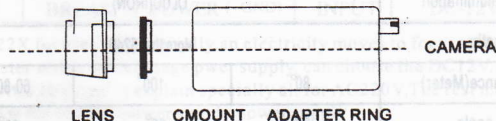


- 9. POWER INDICATOR LED

This LED Turns ON only when power is supplied properly and the DC-DC converter (or the regulator) inside the camera works well.

- 10. C-MOUNT ADAPTER RING

The C-mount adapter ring is used if a C-mount lens is used on the camera. If a CS-mount lens is used, The adapter is not necessary. To install the adapter, first screw it into the lens mount opening on the camera. Then screw the C-mount lens into the adapter.



- 11. CCD-DUST PROTECTIVE CAP

Remove this cap just before installing the lens.

Do not handle or leave the camera with this cap open.

1. If no oscilloscope is available, less accurate adjustment can be made by observing the monitor and adjusting the V-phase potentiometer until no roll occurs on the monitor when switching back and forth between cameras A and B.

SPECIFICATIONS

SPECIFICATIONS

Model	22XAUTOFOCUS(100M)	16X22XMOVE FOCUS(100M)	16X22XMOVE FOCUS(60M)
Signal system	PAL/NTSC		
Image sensor	1/4" CCD	1/3" CCD	
Horizontal resolution	480 TV Lines/560 TV Lines/600 TV Lines/650 TV Lines/700 TV Lines/800 TV Lines		
Lens	F=3.9~85.8	F=3.9~70	
Min.Illumination	OLUC(IRON)		
S/N ratio	More than52dB		
Distance(Meter)	80°	100°	60-80
View angle	80°	60°	80°
IRLED	154unit850nm		84unit850nm
Average life	20000hrs,warranty life:6000hrs		
Water resistance	IP65		
Video output	1.0Vp-p,75Ω		
Focus mode	push auto/manual	push manual	
OSD display	Function/Motion/Zoom/MAG/USER Title		
Operation temperature	-20℃~50℃		-10℃~50℃
Supplied power	AC220V±20%		DC12V 5%±100mA

OPERATION:

一、SYV-75: VIDEO OUT

1.0Vp-p75 composite video signal is provided at this connector

二、AVVR6:

RED	BREAK	BPOWM	PUPPLE	ORANGE	GRAY
DC+12V	DC-12V(GND)	COM	ZOOM	FOCUS	IRIS

Remarks: Remarks: 30 meter, 25 meter, 20 meter, 15 meter, 10 meter, hemispheres series machines have no this electric cable. only video the line and power cables match to press the line.

1、POWER

NO.	COLOR	RUCTION	I/O	NOTE
1	RED	POWER(+)	INPUT	DC+12V
2	BREAK	POWER (- GND)	INPUT	DC-12V

The 22X focuses automatically, an electricity moves to focus (100M), 80 meter series model usage power supply, can choose the DC12V, AC 24V, AC220V, don't explain specially all for AC220V, The rest model all uses the DC12V power supply power supply

The power supply power please read the technique parameter form

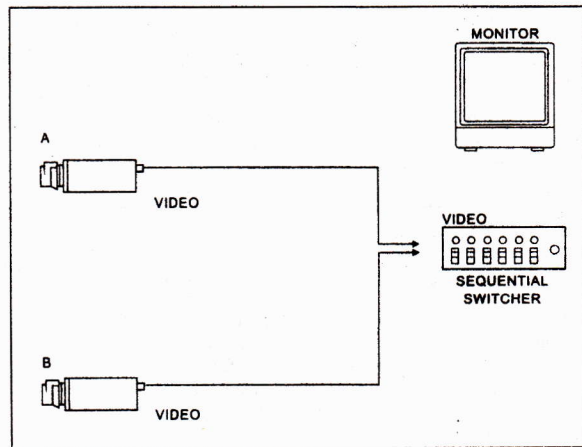
2、Lens protective cap

NO.	COLOR	FUNCTION	I/O	NOTE
1	ORANGE	FOCUS(+NEAR,-FAR)	INPUT	±9V(±3V±12V)
2	PUPPLE	ZOOM(+TELE,-WIDE)	INPUT	±9V(±3V±12V)
3	GRAY	IRIS(-ON,-OFF)/MENU	INPUT	±9V(±3V±12V)
4	BROWN	COM(FOR ZOOM, FOCUS, IRIS)	INPUT	±9V(±3V±12V)

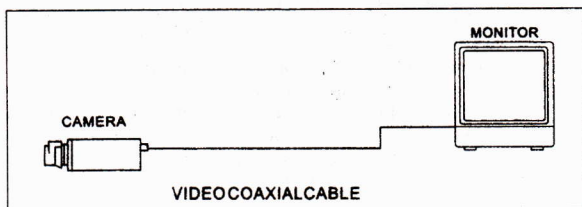
Two functions or more can not be used at the same time.

80 meter, 40 meter models control the function cordlessly. Above for an operating instructions for automatically focusing, an electricity moving focusing, 80 meter, 40 meter series models; 30 meter, 25 meter, 20 meter, 15 meter, 10 meter, hemispheres series models need and will see the line of video, power cable direct conjunction good then.

CONNECTORS AND CONTROLS 7-continued



2.SIMPLEST ONE MONITOR SYSYTEM WITH ONE CAMERA



DSP Infrared CCD Colour Camera

IMAGE DEVICE	1/3" Exview HAD Interline CCD	
TVSYSTEM	PAL	NTSC
PICTURE ELEMENTS	752(H)X582(W)	768(H)X492(W)
SCANNING FREQUENCY	Horizontal:13625KHZ Vertical:50Hz	Horizontal:15.736KHZ Vertical:60Hz
HORIZONTAL RESOLUTION	480 TV Lines/560 TV Lines/600 TV Lines 650 TV Lines/700 TV Lines/800 TV Lines	
MINMUMILLUMINATION	0.01Lux/F1.2	0.01Lux/F1.2
PICTURE ELEMENTS	500(H)X582(W)	510(H)X492(W)
VIDEO OUTPUT	1.0Vp-pVBS75ΩBNC	1.0Vp-pVBS75ΩBNC
AGC	ON/OFF	ON/OFF
S/N RATIO	more than 48db	more than 48db
BLC	ON/OFF	ON/OFF
AUTOMATIC ELECTRONIC SHUTTER	EE/AI	EE/AI
AUTO IRIS CONTROL	VIDEO/DC	VIDEO/DC

*Specifcations ate subject to change without notice

DSP Infrared CCD Colour Camera

IMAGE DEVICE	1/3" Exview HAD Interline CCD	
TVSYSTEM	PAL	NTSC
PICTURE ELEMENTS	500(H)X582(W)	510(H)X492(W)
SCANNING FREQUENCY	Horizontal: 15.625KHz Vertical: 50Hz	Horizontal: 15.736KHz Vertical: 60Hz
HORIZONTAL RESOLUTION	480 TV Lines/560 TV Lines/600 TV Lines 650 TV Lines/700 TV Lines/800 TV Lines	
MINIMUM ILLUMINATION	0.05Lux/F1.2	0.05Lux/F1.2
VIDEO OUTPUT	1.0Vp-p VBS75Ω BNC	1.0Vp-p VBS75Ω BNC
AGC	ON/OFF	ON/OFF
S/N RATIO	more than 48db	more than 48db
BLC	ON/OFF	ON/OFF
AUTOMATIC ELECTRONIC SHUTTER	EE/AI	EE/AI
AUTO IRIS CONTROL	VIDEO/DC	VIDEO/DC

*Specifications are subject to change without notice

COLOR HIGH RESOLUTION CAMERA

IMAGE DEVICE	1/3" CCD	
TVSYSTEM	PAL	NTSC
PICTURE ELEMENTS	752(H)X582(W)	768(H)X492(W)
SCANNING FREQUENCY	Horizontal: 15.625KHz Vertical: 50Hz	Horizontal: 15.736KHz Vertical: 60Hz
HORIZONTAL RESOLUTION	480 TV Lines/560 TV Lines/600 TV Lines 650 TV Lines/700 TV Lines/800 TV Lines	
MINIMUM ILLUMINATION	0.8Lux/F1.2	0.8Lux/F1.2
VIDEO OUTPUT	1.0Vp-p VBS75Ω BNC	1.0Vp-p VBS75Ω BNC
AGC	ON/OFF	ON/OFF
S/N RATIO	more than 48db	more than 48db
BLC	ON/OFF	ON/OFF
AUTOMATIC ELECTRONIC SHUTTER	EE/AI	EE/AI
AUTO IRIS CONTROL	VIDEO/DC	VIDEO/DC

*Specifications are subject to change without notice

COLOR NORMAL RESOLUTION CAMERA

Pickup Device:	1/4" CCD
Picture Elements:	PAL:512(H)X582(V) NTSC:512(H)X492(V)
Sensing Area:	3.6mm X 2.7mm
System of Signal:	PAL/NTSC
Horizontal Resolution:	480 TV Lines/560 TV Lines/600 TV Lines 650 TV Lines/700 TV Lines/800 TV Lines
Lens Mount:	C/CS Mount(C Mount adaptor option)
Electronic Shutter Control:	ON/OFF Switchable
Backlight Compensation:	ON/OFF Switchable
Electronic Shutter:	(1/60)-1/100,000(sec)
Auto Iris Lens:	VIDEO/DC
White Balance	Auto tracking white balance
S / N:	More than 48db
Minmum Illumination:	F1.2/1.0Lux
Video Output:	BNC 1.0vp—p 75 Ω
SCANNING FREQUENCY	PAL: Horizontal:15.7343KHZ Vertical:50HZ NTSC: Horizontal:15.625KHZ Vertical:60HZ

*Specifications are subject to change without notice

B/W HIGH RESOLUTION CAMERA

IMAGE DEVICE	1/3" CCD	
TVSYSTEM	CCIR	EIA
PICTURE ELEMENTS	752(H)X582(V)	768(H)X494(V)
SCANNING SYSTEM	2:1 Interlace	2:1 Interlace
SCANNING FREQUENCY	Horizontal:15.625KHZ Vertical:50Hz	Horizontal:15.736KHZ Vertical:60Hz
HORIZONTAL RESOLUTION	480 TV Lines/560 TV Lines/600 TV Lines 650 TV Lines/700 TV Lines/800 TV Lines	
MINMUM ILLUMINATION	F1.2/0.05Lux	F1.2/0.05Lux
VIDEO OUTPUT	1.0Vp-p VBS75ΩBNC	1.0Vp-p VBS75ΩBNC
S/N RATIO	more than 48db	more than 48db
BLC	ON/ OFF	ON/ OFF
AUTOMATIC ELECTRONIC SHUTTER	EE/AI	EE/AI
AUTO IRIS CONTROL	VIDEO/DC	VIDEO/DC

*Specifications are subject to change without notice.

Fast Manual Instructions for Economic DVR



iPhone APP



Android APP

1 Statement

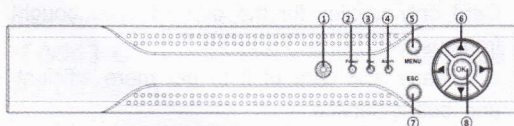
Thanks for purchasing from us. Please feel free to contact our service whenever you need help. This manual is applicable for Economic DVR series (16ch), which also works for other channels.

Only a few instructions for product operations are included, for more information, please read the CD or scan the two-dimension code at first page.

Any enhancement in product features shall be added into the manual consistently without further notice.

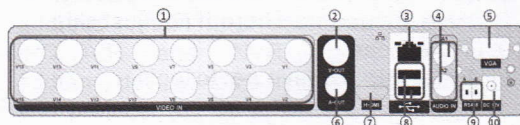
2 Appearance & interface Instructions

2.1 Front-end panel



1 Remote Control Receiver	2 Power Indicator	3 video Indicator
4 Alarm Indicator	5 main menu	6 direction key
7 exit	8 OK	

2.2 Rear panel



1 video input	2 BNC video output	3 network cable interface	4 Audio input
5 VGA output	6 Audio output	7 HDMI output	8 USB interface
9 RS485 interface	10 DC12V input		

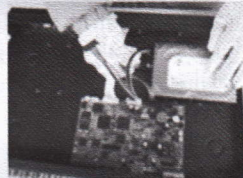
3 Boot up/shut down & User login

3.1 HDD installation (Skip this if you don't need storage):

Install the HDD (Skip this if you don't need storage):



1. Install fixed screw for HDD



2. HDD data line and power line connection

3.2 Boot up

Connect to power, the indicator turns on, DVR boots up.

Note: 1. Use matched adapter to avoid abnormal situation or damage.

2. Shut down power switch (some might have power switches)

3.3 Shut down

To shut down the device, there are soft-Off and hard-off.

soft-Off: Go to <MainMenu> <Logout> <Shutdown>

hard-off: Plug the power on the rear panel.

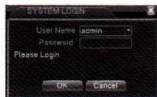
Note: 1. Power recovery: When DVR is shut down abnormally, reboot it, all recordings will be saved automatically and restore to the previous status.

2. Replace the HDD: Shut down the

power before replacing.

3.4 System Login

When DVR boots up, the user must login and the system provides the corresponding functions with the user purview. There are two user settings. The names are admin, default. Admin is default with no



Password protection: If the password is continuously wrong three times, the alarm will start. If the password is continuous wrong five times, the account will be locked. (Through rebooting or wait half an hour, the account will be unlocked automatically).

4 Network settings

Go to **【 Main Menu 】 > 【 System 】 > 【 Network 】**, as follows:
【 IP address 】: default is 192.168.1.10;
【 Subnet Mask 】: default is 255.255.255.0;
【 Gateway 】: default is 192.168.1.1.



Note: IP address of the speed dome must share the same network segment with the router and conform to its IP instead of conflicting with other IP to ensure the device access to network. Go to **【 main menu 】 > 【 system 】 > 【 network 】**, select DHCP Enable (Router should enable DHCP).

5 Record settings

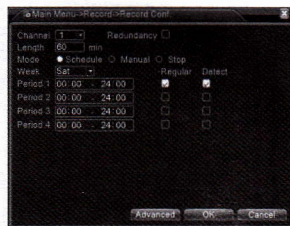
DVR must contain HDD, as follows:
5.1 HDD management

After installing HDD, boot up the DVR, go to **main menu>>Advanced>>Storage** to format the HDD. Then set the HDD as read-write.

Note: At least one read-write disk is needed for normal recording.

5.2 Video settings

Go to **main menu>>record>>Record Conf.**.



【 Channel 】 Choose the corresponding channel number. Choose the all option to set the entire channels.

【 Redundancy 】 Choose the redundancy function to double backup the file.

【 Length 】 Set the time length of each video file between 1min to 120min. 60 minutes is default value.

【 Mode 】 Set video state: schedule, manual or stop.

Configuration: Record according to the set video type (common, detection) and time section.

Manual: Corresponding channel starts recording 24 hours non-stop.

Stop: Whatever state the channel is in, the corresponding channel recording stops when stop button is selected.

【 Period 】 Set the time section of common recording. The recording will start only among the set range.

【 Record type 】 Set recording type: regular, detection, alarm

Regular: Record according to the set time section. The video file type is "R".

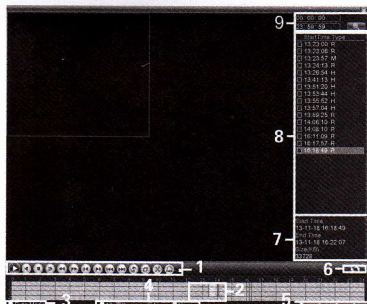
Detect: Within the set time section, trigger the motion detect, video blind, video loss or abnormal analysis. When above alarm is set as opening recording, the recording detection state is on. The video file type is M.

6 Playback

There are two ways for you to play the video files in the HDD

1. In the right shortcut menu
2. **main menu>>Record>>PlayBack**

Note: The HDD which saves the video files must be set as read-write or read-only state.



Pic. Record playback

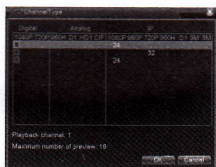
1.Playback control	2.Time display	3.Synchronous	4.Video type
5.Time schedule options	6.search by time/switch mode	7.File Attributes	8.Listed files
9.search by time			

Double-click the file name to playback the video.

7 Channel management

Note: Not all models support this function

Go to<main menu>-<system>-<Digital>-<ChannelType>configure,you can connect IP camera under pure network or hybrid network.



Go to<main menu>-<system>-<Digital>-<Digital channels> to add IP camera to digital channels.

【Enable】 ■ means enable,Settings are effective after enbling.

【Channel】 Select channel number,to add IP camera.

【Connection Mode】 Single connection and multi-connection, multi-connection can connect to several devices, device will be displayed one by one, tour interval can be set, no less than 10s;single channel can only connect to one monitoring device.

【Add】 Click add ,the following interface will be seen:



【search】 : Search and display the IP address within the same LAN,such as IPC,DVR and NVR. Choose one IP address,device name,type,IP address,port and protocol will be entered automatically.

【Protocol】 Support NETTP, ONVIF and all. Default is all.

【ok】 : Click ok to finish adding,go back to digital channel interface,choose added monitoring device to preview.

8 LAN Access

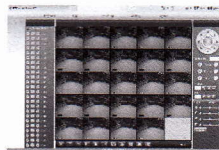
When connected to the network,login DVR to start remote monitoring via IE browser

8.1 DVR connection

Open IE browser, enter IP address, take 192.168.1.10 as an example, input http://192.168.1.10 to connect.

8.2 DVR login

Enter user name and password.(default user name is admin, no password). Change the administrator password timely after login,as follows:



Note: Plug-ins need to be installed if you login via IE browser.IE is default to intercept plugin.Please set IE security level.Go to<internet options>-<security>-<Customized Level>-<ActiveX >,enable them all.Or go to our official website to download and install plug-ins(<http://www.xmeye.net>); Or install IE plug-in _V1.1.0.78.exe via CD.

8.3 Mobile Access

Network environment:wifi,3G

Mobile system:Android, Apple

Software Name:VmEyeCloud

Software Download:Google Market,app store

Note:When the device can access to the public network,you can realise public network monitoring via VmEyeSuper.

9 Public network access (cloud operation)

Cloud technology realises one step on the Internet, which greatly facilitates the customers in public network monitoring. For first use, please start here. If not, just skip.

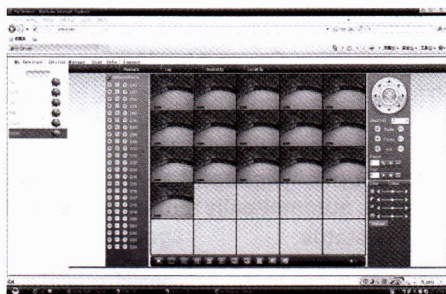
9.1 PC access

(1) Enter <http://xmeye.net> to login.

(2) Install step by step according to the guides.



(3) Click login to enter cloud service interface, as follows:



(4) After successful configuration, wherever and whenever you are, as long as you can surf the Internet, you can get access to the device.

PC monitoring: Login

<http://www.xmeye.net>;

Login with user name and password (user name: guest password: 123).

(5) Device list is on the left, click the device the preview.

9.2 Mobile Access

Network environment: wifi, 3G

Mobile system: Android, Apple

Software Name: VmEyeCloud

Software Download: Google Market, app store



10 Product warranty card

Product Name		Model	
Purchase Date		Distributor	
Purchase Place			
Customer Name		Occupation	
Tel		Post Code	
Company			
Address			

Warranty:

Warranty period: One year. The Warranty Card only applies for the products you bought from us.

Please take care of it to get more efficient and better service.