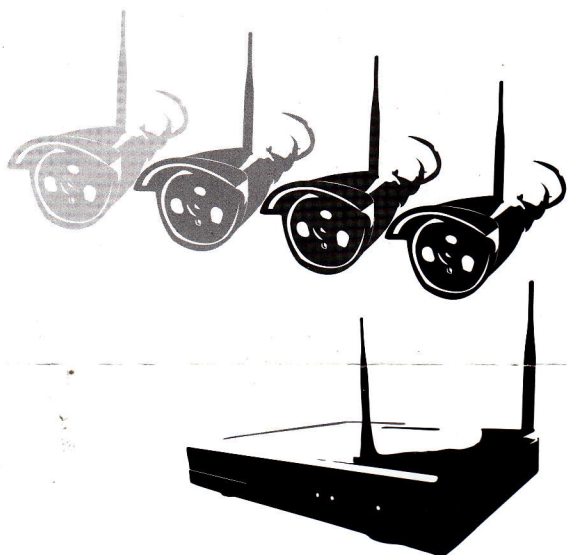


# Wireless kit

## Quick installation guide



## ▶ Hardware description

### 1 Statement

Sincerely thanks for purchasing our products, pls contact us if any problem or requirement. This manual is for network video recorder.

This user manual may contain incorrect place in technology, place not matching with product function or operation, or printing mistake.

We will update our user manual according to our updating in product, and will periodically improve or updating the product and programming. The updating content will add in the new user manual, we won't inform.

If the product's description in user manual is inconsistent with the real products, pls based on the real products.

### 2 Safety cautions

1. Pls don't put a container with liquid on DVR(like Vase) .
2. DVR should put at a ventilation place, and prevent clogged the ventilation hole.
3. Check the power voltage, in case of damage by wrong voltage.
4. DVR should work at the technical standard range of temperature and humidity.
5. Place DVR on level, pls avoid installing at a sharp pounding place.
6. Moisture dust in PCB will cause short circuit, for long-term use of the DVR, you can periodically remove dust in PCB by brush.
7. It will cause burst if replace battery in wrong way, we don't suggest user to replace by himself, if need replace, only use the same type or equivalent type battery, pls don't try to open or maintain the battery.
8. DVR installation need according to specification, you can take the national or local standard as reference.

### 3 Open-package inspection

After receive product, pls open giftbox, remove NVR and put it on suitable place, check accessories. If any damage or lack, kindly pls contact to the distributor.

01

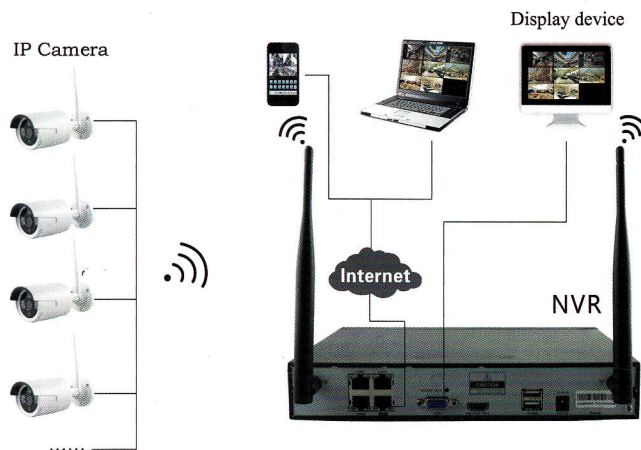
## 9 NVR, IPC parameter list

NVR parameter			
Operating System	Embedded linux OS		
AV(audio/video)input	Network Video	4 CH	8 CH
AV (audio/video) output	HDMI input	1ch, resolution: 1024x768, 1366x768, 1440x900,1920x1080p	
	VGA output	1ch, resolution: 1024x768, 1366x768, 1440x900,1920x1080p	
AV CODEC	Video Resolution	720P/960P/1080p	
Specification	synch-playback	4 CH	8 CH
Video Control	Video/Capture mode	Manual、Time、Motion、Alarm	
	Playback mode	Real time、Routine、Event	
	Backup	USB backup	
HDD	Type	1*SATA interface	
	Max Capacity	4 TB at most for each	
External Interface	Network Interface	1/4 adaptable RJ45 10M/100M, 1/2 WIFI interface	
	USB Interface	1/2 USB 2.0	
Network Control	Protocol	UPnP (play&plug) 、SMTP (email service) 、PPPoE (dial-up) 、DHCP (Automatically obtain an IP address) , etc...	
Others	Power	DC 12V 2A	
	Consumption(excluding HDD)	≤5W	
	Working Temperature	-10℃----55℃	
	Working Humidity	10%----90%	
	Size	257×210×45mm	
	Weight (excluding HDD)	≤1Kg	

IPC Specification			
Specification	1.0MP	1.3MP	2.0MP
Operating System	Embedded Linux		
Image sensor	1/4" Progressive Scan Sensor	1/3" Progressive Scan Sensor	1/2.8" Progressive Scan Sensor
S/N Ratio	> 39.1 dB		
Resolution	1280 x 720 16 : 9 High Definition	1280 x 960 4 : 3 High Definition	1920 x 1080 16 : 9 High Definition
Minimum illumination	Color: 0.1 Lux B/W: 0.01 Lux		
OSD	Date Time & Title		
white balance	Auto		
Day & Night	Auto / Color / BW		
3D-DNR	Auto		
Mirror/Flip	On / Off		
Privacy Regional Shelter	4 Zone Selectable		
Stream	Dual-stream 1280x720@25fps 640x360@25fps	Dual-stream 1280x960@15fps 640x360@15fps	Tri streams 1920x1080@30fps 640x480@30fps 320x240@30fps
Anti-thunder Level	Standard IEC61000-4-5		
Power	DC12V - 1A		
Consumption	≤6W		
Interface	RJ45 / WIFI 802.11b/g/n	RJ45 / WIFI 802.11b/g/n	RJ45 / WIFI 802.11b/g/n (2.4G/5.8G)
Working temperature /humidity	-10℃ to +50℃ / 30% to 80% RH		
Storage temperature /humidity	-20℃ to +60℃ / 20% to 90% RH		
Size	205(L)×70(W)×55(H)mm		
Weight	500g		



## 4 Installation diagram



## 5 Antenna location



02

## ► Software operation

### 1 Add camera by matching code

**Steps:** right click the blank of main interface -> click "System Setup" -> "Channel Setup". Click "quick adding", then Pop up "video manage"

Two ways for Wireless NVR to add IPC, "Code Add" and "Auto Add".

Adding camera by matching code, the camera transmits video images through wireless and NVR, IP is 172.20.14.X;

Auto adding the camera, the camera transmits video images through the cable and NVR, IP is 172.25.123.X;

**Note:** The camera has been matched by factory, no need to add other cameras. If you need to match one code, Firstly, take one network cable and connect to any NVR lan port and power on the device to make sure there is still have any channel can add one camera.



### 2 Video playback

**Step:** Right click mouse in main menu — Video playback — choose channel No. — choose record mode — in Search time, input beginning time and end time — click search, recording will come out, drag time bar — click playback to start

**Tips:** Playback icon introduction: playback 1 frame previous playback 1 frame next play pause fast forward x2, x4, x8

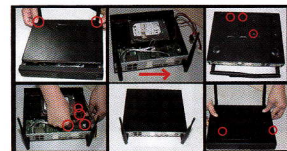
06

The signal coverage of Antenna is similar to a round circle. Antenna located in center of the round circle, signal of surrounding is much stronger, but much weaker if antenna endpoints backoff direction. according to the signal divergency characteristics of antenna, and in order to guarantee the video quality, IPC antenna should try to keep in parallel or tangent with NVR antenna.

### 6 HD Install **Notice** that the HDD had been used need supplier recommend, and need make sure already cut off the power.

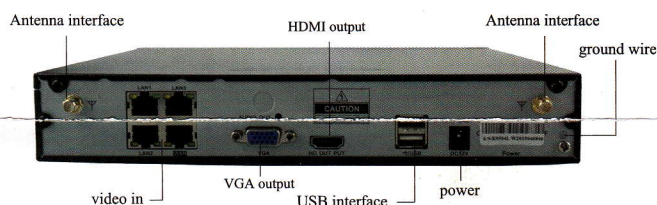
#### Install Steps:

1. Remove the screw of the dvr
2. Connect the HDD cable and power line
3. Assemble the screw, and fix the HDD in the bottom of NVR
4. Close the cover and fix it



### 7 Rear Panel Description

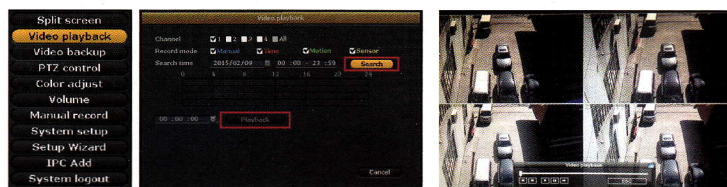
For example, 4ch



### 8 Turn on/off

Confirm that AC voltage accessible matches with DVR. Ensure that the DVR power outlet connect with a good middle ground grounding. After switching power, the device started, **【POWER】** light is on. Turn into system, if the panel status light flashing, it's normal conditions.

03



### 3 Video backup

**Step:** Right click mouse in main menu — Video backup — choose channel No. — choose record mode — in Search time, input beginning time and end time — click search, recording will come out — choose the video which need to backup — click video backup

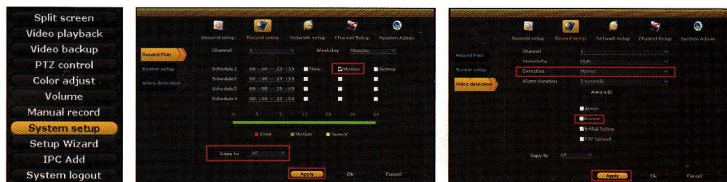
**Tips:** Support 32G U disk backup max, recording will be packed every one hour



### 4 Video detection

**Step 1:** Right click mouse in main menu —> System setup —> Record setup —> choose motion —> choose all —> click Copy to —> click OK to save setting.

**Step 2:** Choose Video detection —> set sensitivity as required —> choose motion —> set Alarm, Buzz or Email as required —> click Copy to —> click OK to save setting.

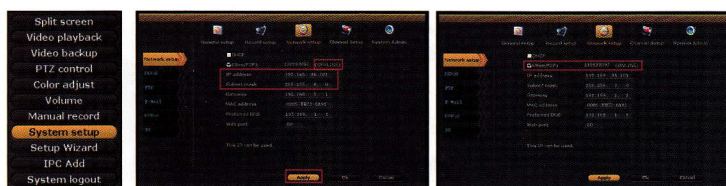


07



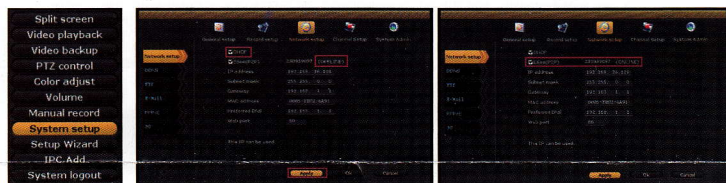
## 5 Generate Esee ID

Precondition to generate Esee ID is that make sure video recorder is connected with network, and IP address is available. Right click mouse in main menu — System setup — Network setup. If user is familiar with LAN, then no need to choose DHCP which help to get IP address automatically. Manually input IP address and DNS address, video recorder will generate ID by network, once generate, it will appear in menu.



If user is not familiar with LAN, or video recorder is in independent network, can choose DHCP to get available IP address.

After video recorder get IP address, it will generate Esee ID automatically.



## 6 Access in LAN

Access by computer in same router or use same switch with video recorder

**Step 1:** Right click mouse in main menu — System setup — Network setup — check video recorder IP address.

**Step 2:** Access by computer in same LAN, input video recorder IP address and port (if port is 80, no need to input) in IE browser or any other browser. Then it will access LAN log in webpage, input user name and password, click log in.

**Step 3:** Once access successfully, can get video.

**Tips:** Please make sure video recorder and computer in same network segment.

08

## Packing list

S/N	Item	Quantity
1	WIFI NVR	1pcs
2	Screw bag (4 screws for HDD)	1pcs
3	USB mouse	1pcs
4	1 meter network cable (for IPC code match)	1pcs
5	DC 12V2A power supply (for NVR)	1pcs
6	NVR user manual - Installation Instructor	1pcs
7	WIFI IP Camera	4/8 pcs
8	DC 12V/1A power supply (for IPC)	4/8 pcs
9	Screw bag (for IPC)	4/8 pcs

### Notes:

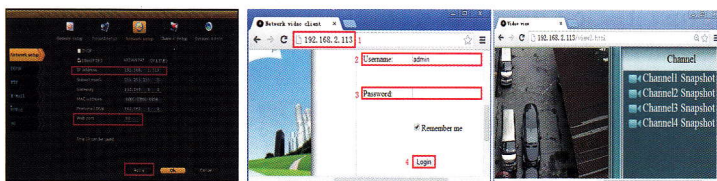
1. Device will not in guarantee if caused by below reason:

A. Accident; negligence; disaster; mis-operation.

B. Do not conform to the environment and conditions, such as power improper, working temperature too high or too low, lightning stroke, etc.

C. Ever be maintained by other center which not belong to the real factory.

D. Goods already sold more than 12 months.



## 7 Access in WAN

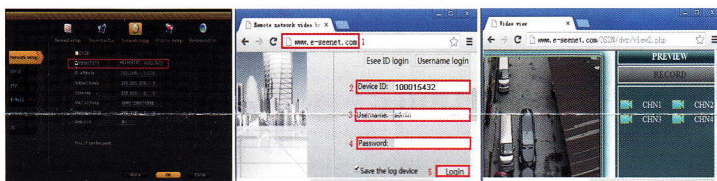
Access by computer not in same router with video recorder

**Step 1:** Right click mouse in main menu — System setup — Network setup — check video recorder IP address.

**Step 2:** Open the IE browser, enter the [www.e-seenet.com](http://www.e-seenet.com) in the address bar. Then it will access log in webpage, input ID, user name and password, click log in.

**Step 3:** Once access successfully, can get video.

**Tips:** Video quality and fluency depend on video recorder side upload speed and computer side download speed, each channel need above 30KB.

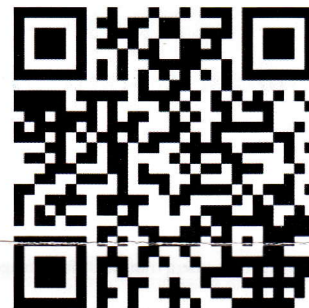


## 8 Android mobile application download and installation

(Two ways to download)

09

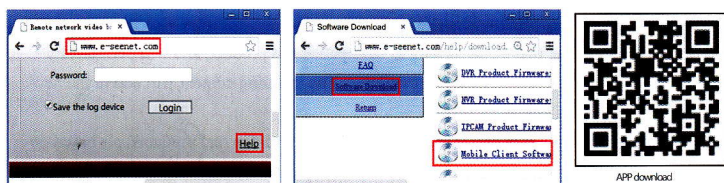
APP download  
scan here



**No.1:** Right click mouse in main menu → Setup Wizard → Show three QR code → Android User scan QR code for android application by mobile directly, enter download page, click download to mobile to install

**No.2:** Go to [www.e-seenet.com/help/download.php](http://www.e-seenet.com/help/download.php) in mobile browser, enter download page, click download to mobile

**No.3:** Go to [www.e-seenet.com](http://www.e-seenet.com) in computer, click help → software download → find android mobile application, click download to save in computer, then copy to mobile to install



## 9 iPhone application download and installation

**Step 1:** Go to App Store

**Step 2:** Search Eseecloud

**Step 3:** Input Apple ID to verify

**Step 4:** Click download



## 10 Esee mobile application(Eseecloud)-Add device

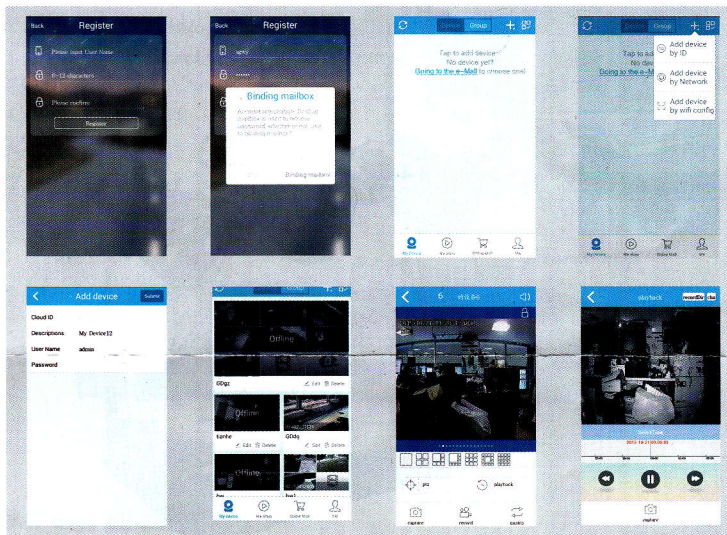
**Step 1:** Register

**Step 2:** Enter device interface

**Step 3:** Add device

**Step 4:** Added successfully. Click channel No.to get video

**Step 5:** Remote playback





# Match code Manual

**Tips:** please read following steps before use

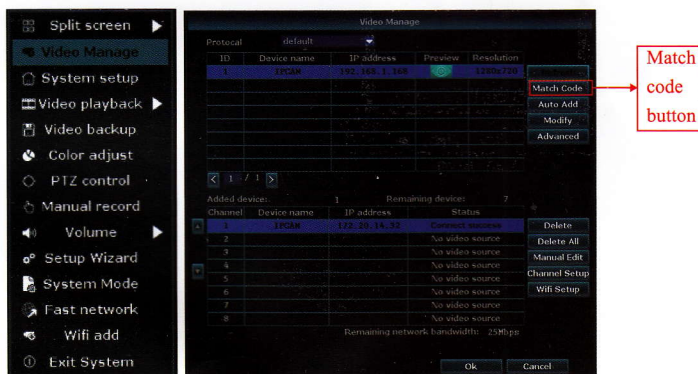
## Adding Cameras by matching code

### 1 Matching code instruction

Matching code means match NVR and IPC, to make IPC connect NVR automatically, video transmission though wireless mode, ensure that there is spare channel can add the camera before matching code

### 2 Match code method

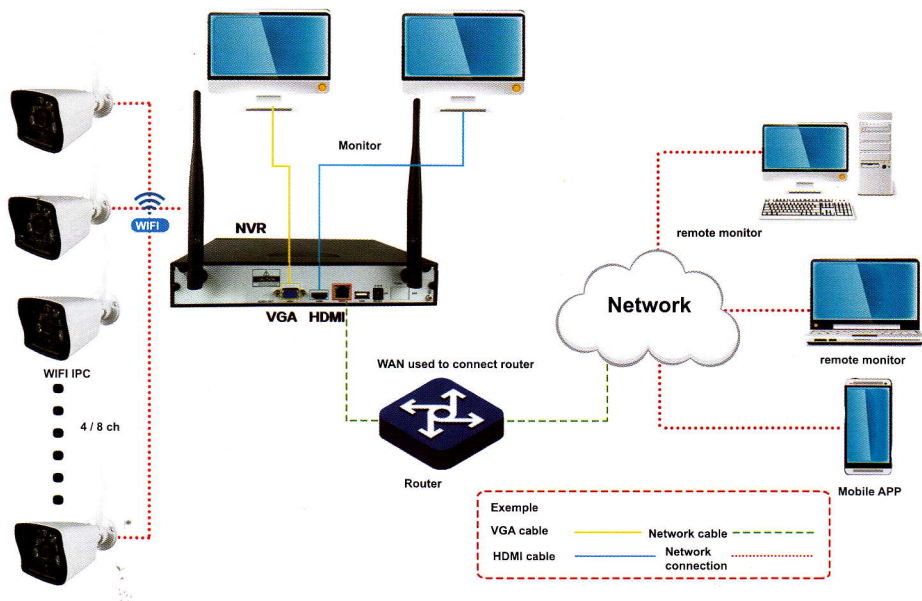
- 1、Take device out from carton and power on, then connect mouse, display. Camera and NVR need to be powered on
- 2、Take the network cable out of the accessories box, then connect camera and NVR via this cable, the light of NVR on the wan port interface is on, if the light on the wan port is off, then can not match code, please check if network or switch can work well or not. (if multi cameras need to be matched code, then can connect cameras on router or switch, then connect LAN port of router or switch with NVR)
- 3、Right click mouse to go to the main menu---click video management (if it asks password, as default password is blank)---match code---click yes, it begins matching code.
- 4、Match code successfully, it will show connection successful and video coming out, then disconnect power supply of camera and disconnect with NVR by network cable, then put camera in a place 10-20 meters away from NVR, then power on camera, camera does not need network cable, wait 1 to 2 minutes, the video picture come means match code is finished.
- 5、If it shows failed, plz refresh, if there is no other reminds, which means the network cable is not connected well, plz check the camera power and cable connection, then match code again.



( Picture 1 )

### 3 Two connection mode

#### Wireless connection mode



#### Wireless and wired mixed connection mode

