





World Leading, Never Stop!



1920*1080(30fps)
Loop Recording
Wide angles of 120 degrees
AV OUT or HDMI output

GPS logger
Collision Data protection
Vehicle speed and time & Date on video

Model No.

GPS logger & vehicle recorder



- 1920*1080(30fps)
- Loop Recording
- Wide vision angle 120 degrees
- AV OUT or HDMI output
- GPS logger
- Collision Data protection
- Vehicle speed and time & Date on video
- Can work with external gps navigator

SPECIFICATION

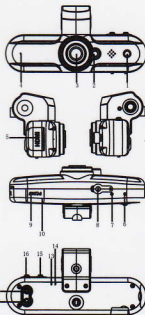
Video Mode

Image Param	System Setup	Language
Video resolution	Volume	English
Scene	Flicker	Chinese (Simplified)
Digital effect	Auto power off	Chinese (Traditional)
White Balance	Time zone	Korean
ISO	TV out	Japanese
EV	Stamp	Russian
Contrast	Date & Time	Ukrainian
Sharpness	Format storage card	
Recycle record	Reset	
Video flip	Version	

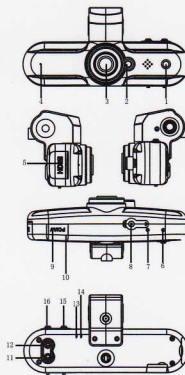
Camera Mode

Image Param	System Setup	Language
Photo size	Volume	English
Scene	Flicker	Chinese (Simplified)
Digital effect	Auto power off	Chinese (Traditional)
White Balance	Time zone	Korean
ISO	TV out	Japanese
EV	Stamp	Russian
Contrast	Date & Time	
Sharpness	Format storage card	
Burst	Reset	
Self timer	Version	

DIMENSION DIAGRAM



SPECIFICATION



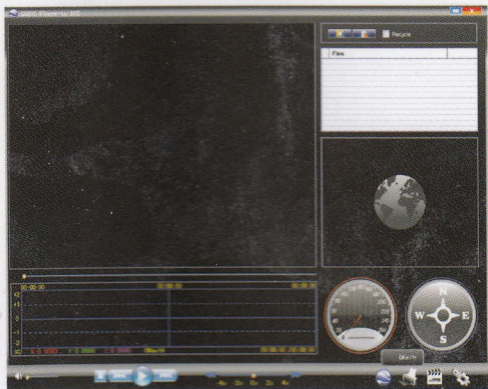
1. Remote Control Receiver
2. Laser Light
3. Lens
4. Mic
5. HDMI Port
6. Format Button
7. Reset Button
8. DC Port (12 ~ 24V)
9. USB Port (As power supply: 5V / 1A)
10. Micro-SD Card Slot
11. USB Switch
12. Laser Light Button
13. Blue LED Indicator
14. Red LED Indicator
15. Sound On/Off
16. File Protection Button

ACCESSORIES

- 4M Vehicle power charger x 1
- Bracket x 1
- TV Cable x 1
- USB Cable x 1
- Remote controller x 1

- User manual x1
- HDMI Cable (Optional) x1
- Micro SD Card (Optional) x1

Software interface



Icon	Features
	Add multi files
	Remove all files on list
	Playing video repeatedly
	Home
	Backward
	Playing video
	Stop playing video
	Next file
	Forward
	End
	Take snapshot from video
	System setting: Resolution setting, Time Zone setting, G-Sensor setting.
	Print file selected
	Map