

USB Wireless LAN card Quick Install Guide

Introduction

Thank you for purchasing the Wireless-LAN USB notebook. Wireless-LAN USB 2.0 Adapter allows you to connect notebook or desktop to any Wireless-LAN networks suitable for in your home or office environment.

System Requirements

Notebook or desktop PC with Pentium 1 GHz-compatible or higher Processor
Windows XP/Vista/WIN7/MAC OS/Linux
Available Hi-Speed USB 2.0 port

Installation

IMPORTANT: For proper operation, do not connect the Wireless-LAN USB Adapter to your computer before you install the software. If you do, wait for the Found New Hardware screen to display and click "Cancel", otherwise, the installation process will likely be adversely affected.

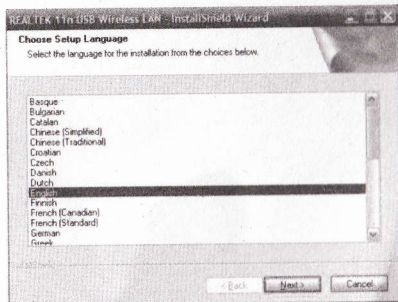
Insert the included setup CD in the CD-ROM drive and start the **Setup.exe** program.

1

Name	Size	Type	Date Modified
DATA		File Folder	11/29/2009 9:02 PM
linux		File Folder	11/29/2009 9:02 PM
MacOS10.4_Universal_Driver...		File Folder	11/29/2009 9:02 PM
Manual		File Folder	11/29/2009 9:02 PM
Realtek_MacOS10.3_Driver1...		File Folder	11/29/2009 9:03 PM
Release notes		File Folder	11/29/2009 9:03 PM
VistaX64		File Folder	11/29/2009 9:03 PM
VistaX86		File Folder	11/29/2009 9:03 PM
WinXP		File Folder	11/29/2009 9:03 PM
Win7		File Folder	11/29/2009 9:03 PM
WinVista		File Folder	11/29/2009 9:03 PM
X64		File Folder	11/29/2009 9:03 PM
1_setup.dll	365 KB	Application Extension	5/17/2006 11:21 AM
autorun.inf	1 KB	Setup Information	6/17/2006 6:18 PM
data1.cab	3,164 KB	WinRAR archive	5/18/2007 6:41 PM
data1.hdr	56 KB	HDR File	5/18/2007 6:41 PM
data2.cab	4,937 KB	WinRAR archive	5/18/2007 6:41 PM
1Setup.dll	481 KB	Application Extension	4/9/2007 2:36 PM
1Setup.bin	1 KB	BIN File	5/18/2007 6:41 PM
Setup.exe	445 KB	Application	12/20/2007 3:46 AM
Setup.ini	1 KB	Configuration Settings	5/18/2007 4:37 PM
Setup.inx	263 KB	INX File	5/18/2007 6:41 PM
Setup.isn	251 KB	ISN File	5/18/2006 2:44 PM
Setup.iss	1 KB	ISS File	12/20/2006 1:55 PM
SETUP.TXT	3 KB	Text Document	10/12/2006 11:15 AM

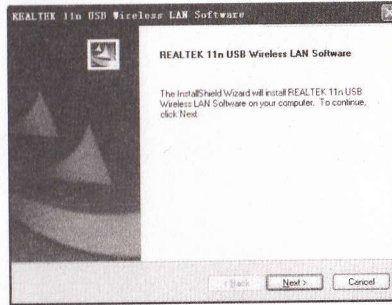
Wait for the installer to run. Select Language and click "Next" to continue with the installation

2



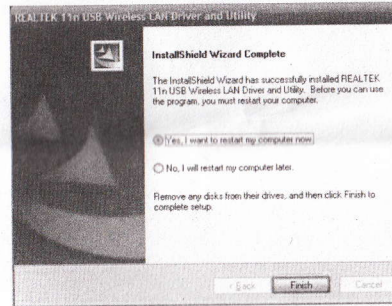
Click "NEXT"

3



The installer will automatically install the program. When done Select "Yes, I want to restart my computer now" and click "Finish" to reboot your computer after the driver install successfully.

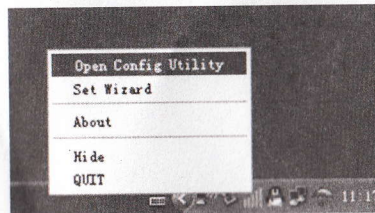
4



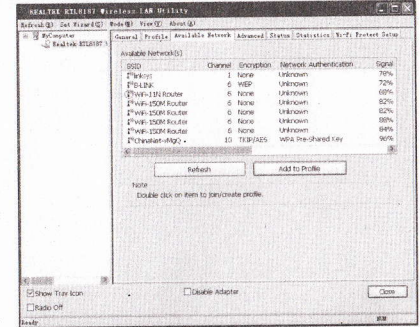
Configuration

Once the installation is complete, you can configure the Wireless-LAN USB Adapter to connect to a wireless access point (AP). The wireless configuration utility will start automatically, and you'll also find a tray icon at the lower right corner in your Windows systems tray.

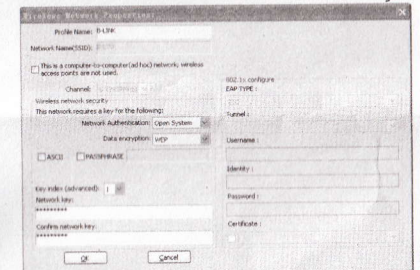
1.Right-click the Wireless tray icon and select "Open Config Utility."



2.The configuration utility will scan for wireless networks within range. Click "Refresh" to refresh the list of available wireless networks. To join a Particular network that displays, select it and click "Add to Profile."



3.If the wireless network use encryption, you need to input the correct encryption key. The configuration utility automatically suggests the correct authentication type (see the drop-down list), and you should not change the suggested value.



NOTE: For WPA/WPA2 networks, you need to select the correct encryption type, as well as(AES or TKIP). These settings depend on how the wireless network is set up. Only the owner of the wireless network can provide the required information.

4.If the wireless access point is connected successfully , you'll see the following dialogue box.

