

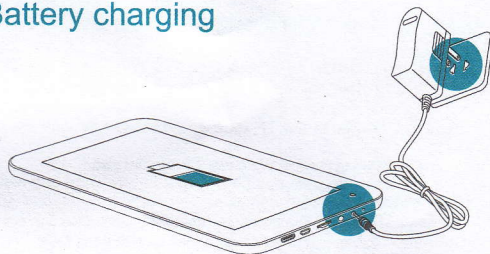
# U7/U7H

## Quick start guide

Thank you for purchasing SmartDevices U7/U7H tablet. U7/U7H is a sophisticated electronic product and you are requested to read and understand this manual carefully. This quick start guide will enable you to easily familiarize with basic functionalities of U7/U7H product.



## Battery charging



Battery Charging Diagram

Please make sure that the battery is fully charged before your first use. To charge battery, please connect the matching charger to mains power outlet, and insert the DC jack end into the charge interface of U7/U7H. Switch ON the AC mains. After a few seconds, the charging instructions will appear on the screen. During battery charging, you can view the charging progress by pressing the power button. Once the charging is completed, please unplug the charger from U7/U7H and the power supply connection.

## Power on

Hold down the power button until the SmartDevices Logo appears on the screen. Wait for a few seconds, after the system startup is completed then enter into the main interface.

## Hibernate

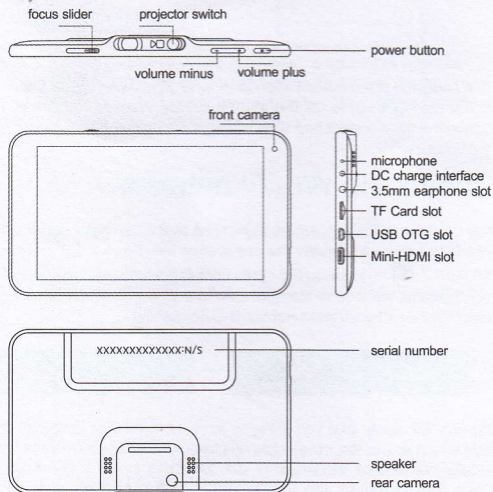
Once booted up, a short press of power button will put the U7/U7H to hibernate state. During hibernation, U7/U7H will turn off the screen and enter into the standby condition, where it will consume very little power. Another short press of power button will bring the U7/U7H out of hibernation and you can continue with your operation.

## Shutdown and forced shutdown

If you are not using the U7/U7H for several days, we recommend you to shutdown the machine. Hold down the power button for two seconds, and select "Power off" from the pop-up window "Tablet options" to completely shut down the U7/U7H.

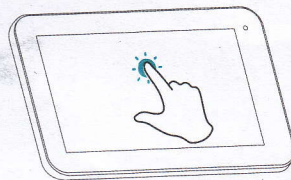
In case of a system crash and the U7/U7H stops responding to your commands, please hold down the power button for more than 10 seconds to forced shutdown. You need to reboot the U7/U7H after a forced shutdown.

## Know more about U7/U7H



Power Button	Long press to turn on/off U7/U7H Short press for hibernating/awakening U7/H7H
Volume Plus	Increase the volume
Volume Minus	Decrease the volume
Projector Switch	Turn on/off the projector
Focus Slider	Adjust the projection focus

## The touch screen operation

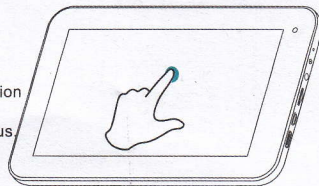


### Touch Operation

A quick touch on the application, the option or the menu icon on the screen will start or execute the corresponding program or function.

### Press and hold operation

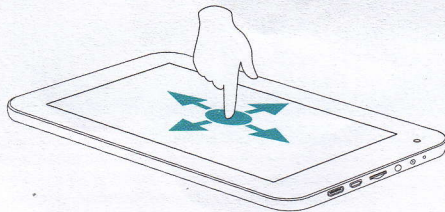
A longer touch on the icon will simulate the right button function of the mouse to display more operating options or sub menus.



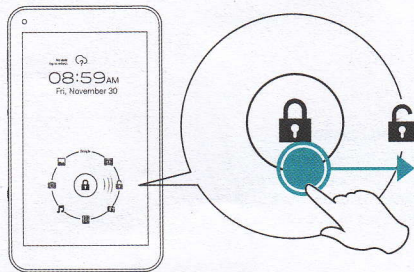


### The drag operation

To drag a list or a control bar across the screen, slide your finger up and down or left and right while you continue to touch, hold the selected control bar or the list.

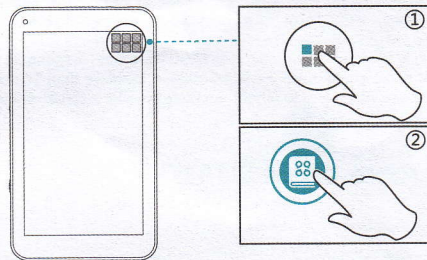


### Screen unlock



Drag the lock icon to the unlock icon side using your finger. The main interface appears.

### Start application



To display the pre-installed applications, tap the icon " " that is located at the top right corner of the main interface screen. Touch the application icon in the list to select and start any specific application.

### Connect to Wi - Fi network

Tap the icon " " which is located at the top right corner of the main interface screen to display the application list. From the application list, tap the icon " " to setup the Wi-Fi connection. Please drag the Wi-Fi switch icon from the left side to the right side to start the Wi-Fi function, U7/U7H will search for nearby wireless hot spots automatically.



Tap the hot spots that you want to connect in the hot spots list in the right side which are in the range, you will be asked to provide the authentication details like access password of the hot spots in the pop-up dialogue box. Once it's completed, tap the "connect" button to connect to the wireless network.

## Connect to the computer

You can connect your U7/U7H to a computer with Windows 7 operating system using the USB data link cable which is supplied along with your U7/U7H. The connection may take a few minutes. Once they are connected, U7/U7H storage and the file in the TF Card are accessed through the file explorer.

If your computer operating system is Windows XP, please visit: <http://www.smartdevices.com.cn/support/download/> to download and install Windows Media Player 11 in your computer. Reboot your computer after installation. Connect U7/U7H to the computer using the USB data link cable. Open " My Computer " to view U7/U7H storage disk icon and the files.

## Firmware upgrade

SmartDevices will occasionally release the firmware updates / upgrades for U7/U7H to incorporate new functionalities or to fix known bugs. To get U7/U7H's latest firmware and know the upgrading way, please visit our official website: <http://en.smartdevice.com.cn/>

## After-sales service

If you have any questions or suggestions, please contact us as the following ways:

E-mail: [service@smartdevices.com.cn](mailto:service@smartdevices.com.cn)

Tel. : 400-8850-820 ( 8:30 a.m. to 12 p.m., 1:30 p.m. to 5:30 p.m. on working days.)

\*This guide is subject to change without any prior notice, and should be used as a reference.

\*The pictures shown in this guide are for reference only, take practicality as standard.

Copyright ©2012 Smartdevices Inc.

[www.smartdevices.com.cn](http://www.smartdevices.com.cn)