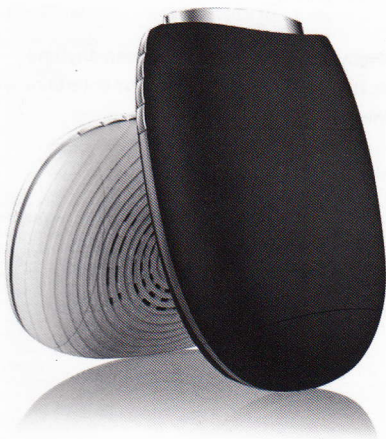


# Wireless Smartphone Projector

## USER MANUAL

---



### Note

Please read the manual carefully before using and keep it in a safe place for future reference.



## Introduction

The Wireless Smartphone Projector is designed for both mirror projection via WiFi (Miracast/Airplay/DLNA) and cable connection with smartphone (iPhone, Android phone), tablet and PC.

You can enjoy up to 60 inches BigScreen anytime anywhere. It's a perfect partner to your entertainment and business.

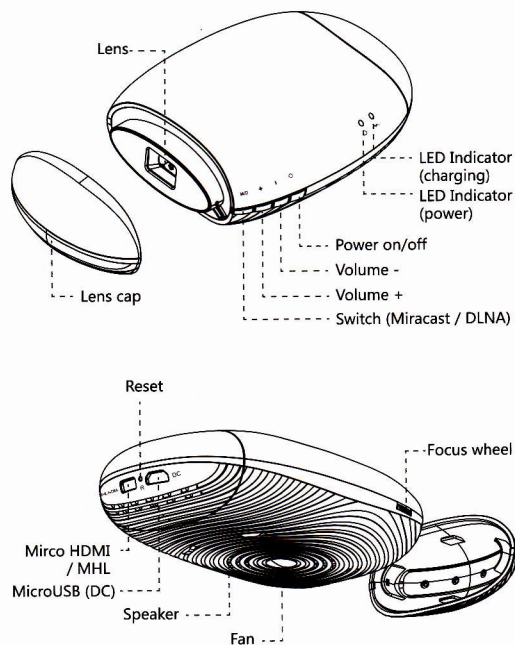
## Specification

|                        |  |
|------------------------|--|
| Projector technology:  | Texas Instruments DLP®                     |
| Lamp:                  | RGB LED, life span over 20,000 hours       |
| Brightness:            | 50 ANSI lumens                             |
| Conformity:            | 80%  |
| Image size (diagonal): | 15" ~60"                                   |
| Projection distance:   | 1~10 feet (0.5 to 3 meters)                |
| Resolution: Native     | 854*480                                    |
| Contrast ratio:        | 1000:1                                     |
| Aspect ratio:          | 16:9                                       |
| Focus:                 | Manual                                     |
| Offset:                | 100%                                       |
| Audio:                 | 2watt*1, 4Ω                                |
| Power consumption:     | 11watt                                     |
| Input:                 | HDMI/MHL, microUSB(DC)                     |
| Battery:               | Built-in, 1700mAh, 7.4V.                   |
| Power supply:          | 5V/2.5A (transformer AC 100~240V, 50/60Hz) |
| Weight:                | 140g with battery                          |
| Dimensions:            | 4.5"x3.0"x1.3" (114*78*33mm)               |

### Notice:

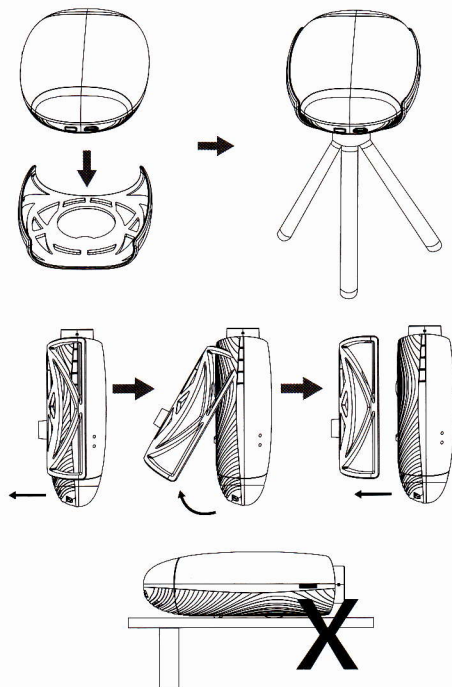
When charging the projector, use only a dedicated USB cable or one can handle current higher than 2.5A.

## Projector Parts



- Long press the Power button to turn on/off the projector. Press the Power button to check the battery status.

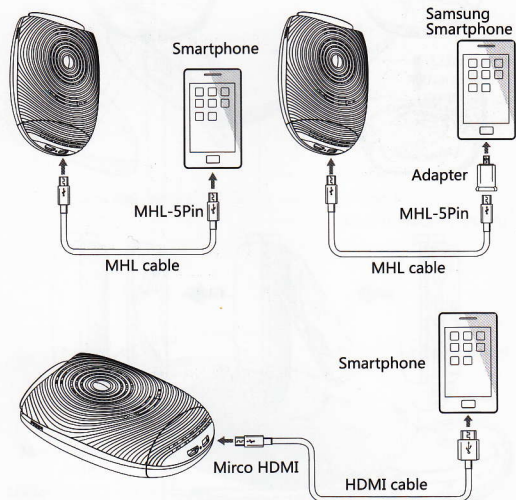
## Install the Projector



**Notice:**  
Please use the projector with the included holder. Don't put it on the surface directly when working.

## Connecting to an MHL/HDMI device

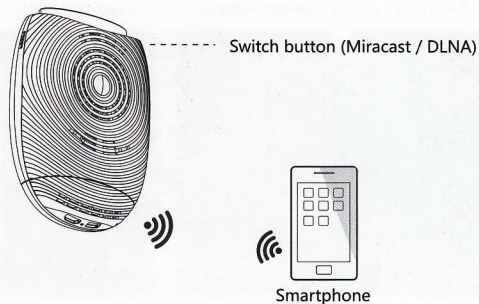
This will allow you to mirror your smartphone via cable connection.



Notice: Please ensure your device is MHL/HDMI enabled.

## Connecting to a WiFi devices

This will allow you to mirror your smartphone on projection via WiFi.

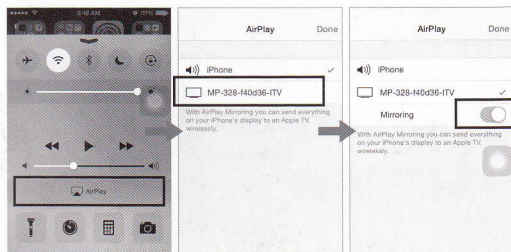
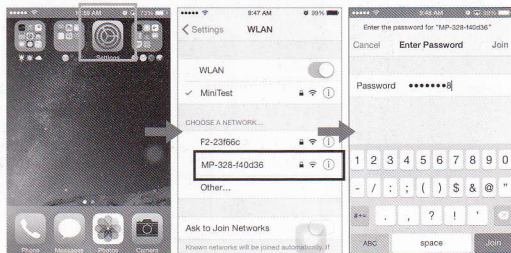


Notice:  
Please ensure your device is Miracast/DLNA enabled.

## Connecting to a WiFi Device

### Airplay Connection

- Settings - Search for access point "MP-328-XXXXXX" - Input password "12345678" and connect - Enable AirPlay - Choose the device - Enable "Mirror" - Done

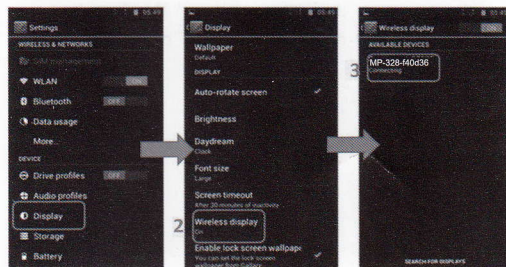


Notice:  
Please make sure your iOS device is iPhone 4S/iOS 6 or higher.

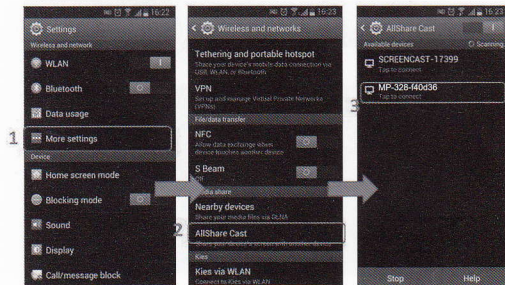
## Miracast Connection

### Miracast Connection

- WiFi Display  
Settings - Display - CastScreen - Search access point "MP-328-XXXXXX" and connect



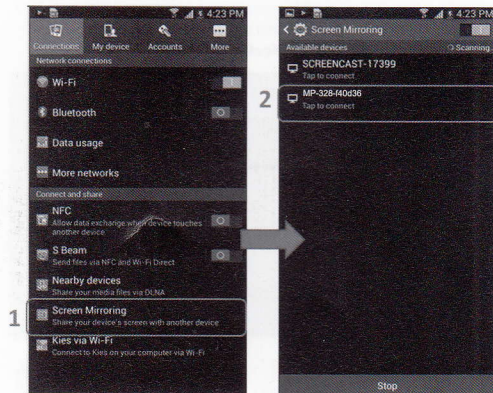
- AllShare Cast  
Settings - More Settings - AllShare Cast - Search access point "MP-328-XXXXXX" and connect





## Miracast Connection

- Setting — Connections → Screen Mirroring → Search access point "MP-328-XXXXXX" and connect



Notice:

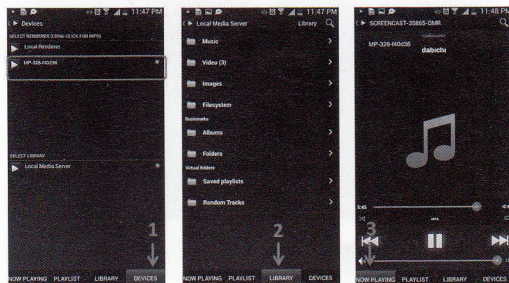
The settings and menus for Miracast/Airplay may be different for each device.

## Connecting to a WiFi Device

### DLNA Connection

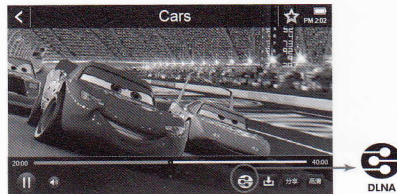
- Local media files

If your smartphone is DLNA enabled, you can project the local media files after connecting to the projector. Or you can download and install a DLNA streaming app.



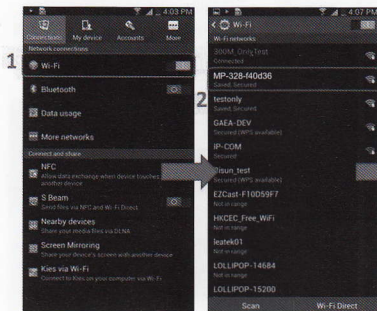
- Online media files

Download and install a DLNA enabled online app and deliver media contents on projection.



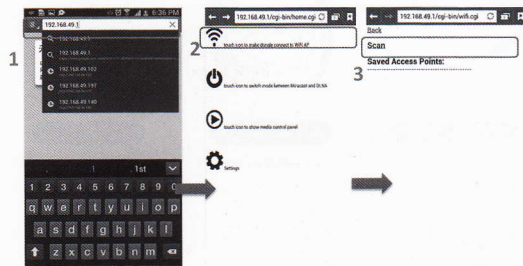
## Router Connection

1. Turn on WiFi - Search access point named "MP-328-XXXXXX" - Input password "12345678" and connect.



## Router Connection

2. Connected - Visit 192.168.49.1 from mobile browser - Select WiFi - Select Scan - Search access point and connect



3. Click the icon.
4. Click "Scan" to scan the Wireless Router, choose the AP Enter Password.

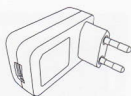
## Package Content



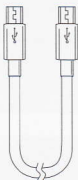
Projector



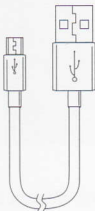
Stand



Power adaptor



MHL cable



AC cable



Tripod



MHL adaptor