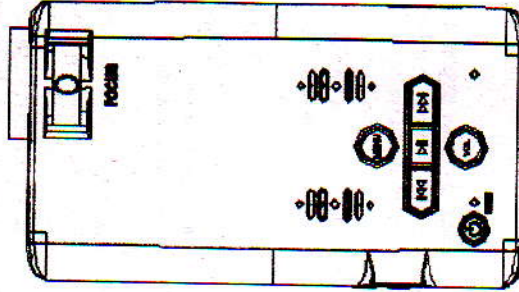


Portable Projector User's Manual



IMPORTANT

This product is a micro projector with MP4 player function and a VGA connector that can connect to PC/Notebook directly and mobile/iPhone, MP4/iPod, PSP, PDA, DVD, and other digital products which have video/audio or RGB output for small business presentation and personal entertainment.

Before using the product, please read the manual carefully.

This product has 4GB memory, and can receive an additional TF/Micro SD card with bigger memory.

You have to leave 30 MB of free space in the memory of the player for the O.S.

Do NOT use the projector in wet or very hot place.

The projection resolution is 800x600 pixels. Separately, the MP4 module recognizes that the video is 800x600.

When you turn off the MP4 module, please wait 3 seconds before turning it back on repeatedly.

Contents in this user manual may change for better service.

For the latest setting information of your product, please visit our website.

If you need to play a large number of files in MP4 player, please recompress those files into a single file which can save the start up time, the MP4 module will also respond faster.

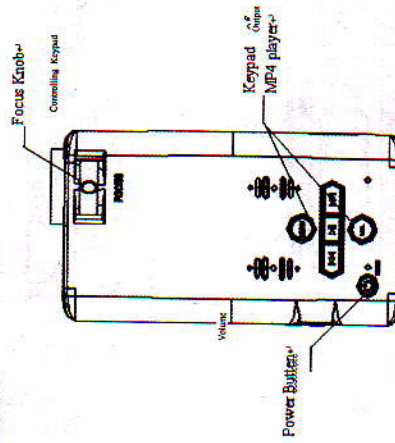
INDEX

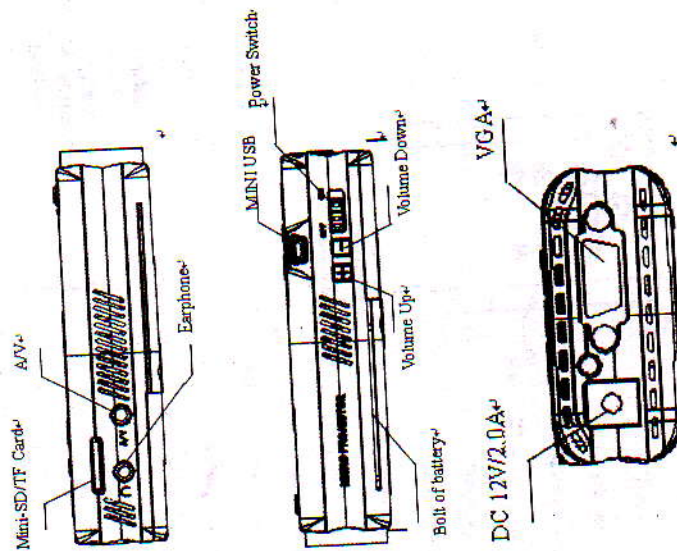
Product List	1
Overview	1
General Specification of Projector	2
Basic Functions	3
MP4 key functions description	5
MP4 features	5
Access to MP4 Menu	6
MP4 Function Descriptions	8
1. Music Mode	8
2. Video Mode	10
3. Photo Mode	11
4. Explorer Mode	11
5. Settings Mode	12
Troubleshooting	13
Remote controller user guide	14
Important notice of projector	17

Product List

Projector	1
AC Adapter	1
AV Cable	1
Battery	1
Charger	1
Tripod	1
Remote Controller	1

Overview





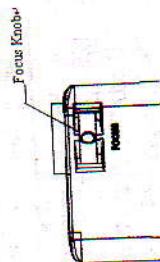
General Specification of Projector

Parameters	Normal	Unit	Remarks
Resolution	800x600	Pixel	
Aspect ratio	4:3		

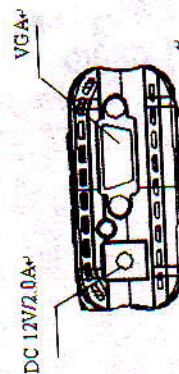
Projection lens type	Manual focus	
Projection angle	33.4	Degree
Recommended projection size	30-40 Diagonal	Inch
Light source	LED	
Input	RGB, A/V	
Weight	290	Gram
		NTSC/PAL

Basic Functions

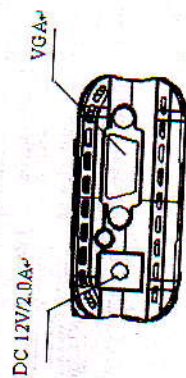
1. Focus adjustment
To achieve the best quality projection image at different projection distances, please manually turn the focus knob. The focus mechanism is designed for projection distance from 0.5m to infinity.



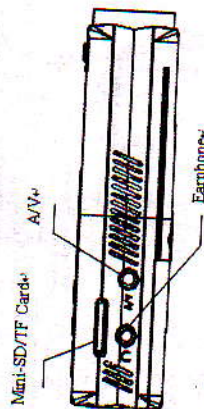
2. Power Input



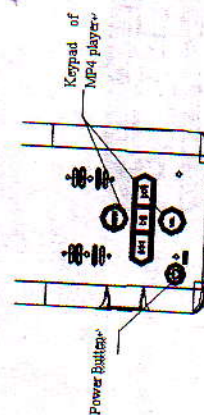
3. Connects to computer by VGA connector



4. Connects to digital products (A/V input) by A/V cable



5. MP4 player



MP4 key functions description

MENU: Key interface or short-press to go back to previous menu

VOL+>>: V+ volume up

VOL+<<: V- volume down

>>: Select next track or fast forward

<<: Select previous track or fast reverse

||: Play and Pause or short press enter sub-menu.

Power on, power off: pressed and hold for over 3 seconds.

MP4 features

Explorer: Internal Media, Recorded List, All Audio Tracks, All Video Tracks, All Image Files.

System Settings: System Setting, Desktop, Language, System Information.

Browsing Pictures: Browsing pictures one by one or Slide show or Thumbnail (supports JPEG, BMP and GIF format).

Video Playback: Compatible with AVI, MPEG1, MPEG2, MPEG4 3G, WMV9/VC1, ASF, RM/RMVB and FLV formats (must use software to compress the size of files to 640x480 before playing).

Audio Playback: Compatible with MP3, WMA, WAV, APE, FLAC AAC/AAC+ and MPEG1/2/2.5 formats.

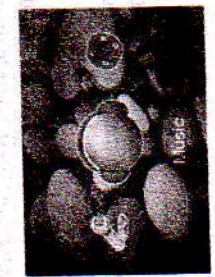
Access to MP4 Menu

Connecting adaptor to projector, push **Power Switch** to ON, LED is red, and press **PWR** button once, LED is green, six seconds later, it will project blue scene.

***Please ensure there is no AV input before starting up the MP4 player.**
Press [Play] and hold for 3 seconds, blue LED is light, MP4 is power on and 3 seconds later the start up logo displays.

Press [MENU] key to access the Menu mode and the different menus from the main menu.

1. Music Mode
2. Video Mode
3. Photo Mode
4. eBook Mode
5. Explorer Mode
6. Settings Mode



6



7

MP4 Function Descriptions

1. Music Mode

A. Switch on the player, then select Music Mode and press [Play]▶▶ to enter sub-menu, then select and press [Resume Play] and press [Play]▶▶ to play the music. Press ▶▶ to pause.

B. Select music:

◀◀ : Select previous song

▶▶ : Select next song

C. Volume Adjust: Press [VOL] key and

V+ : Increase volume

V- : Decrease volume

D. Press ▶▶/◀◀ key over 1 second to do FR/FF function when playing the music.

E. After entering Music mode, short press [Play]▶▶ and you can view the following sub-menus:

Resume play, All Music, Artist, Album, Genre, My Favorite, Medialib Update

In **Resume play** option, when the play list is displayed:

Press ▶▶/◀◀ to select the music, then press [Play]▶▶ to start the playback.

When all songs (traces) are displayed:

Press ▶▶/◀◀ key to select the song, then press [Play]▶▶ to play.

When you press and hold [MENU] key, the following window will be displayed:

Repeat Mode—Repeat to play the selected music.

Play Mode—Can set playing in order and shuffle. Press "Last" or "Next" key to select.

MSEQ—Can select: 3D, Bass IEQ. Press "Last" or "Next" key to select.

EQ Sel—Can select: Normal, MSEQ, Rock, Pop, Classic, Bass, Jazz, User EQ. Press "Last" or "Next" key to select.

Display—Can set the Lyric, Freq Chart and Close.

You can also find songs by:

- Artist: View each songs artist's information.
- Album: View each songs album's information.
- Genre: View each songs genre's information.

2. Video Mode

Select [Video] mode and press [Play] to enter the menu. Press [Right] or [Left] key to enter the video play queue in order to select the video which you want to play. Then press [Right] key to play the video file. When playing the video, you can press [Right] or [Left] key to increase/decrease the volume, or press [Right] key to pause or press [MENU] key to go back to the previous menu.

Note 1: The RM/RMVB video only supports the video file which is below 720x576. The bigger the volume file is, longer will be the time to start the playing. The volume of the file must be changed.

Note 2: AVI video only supports the video file which is below 800x480. The bigger the volume file is, longer will be the time to start the playing. The volume of the file must be changed.

3. Photo Mode

Select [Photo] mode and press [Right] to enter the following menu:

All Photos: You can view all image files. In this mode, you can press [Right] or [Left] key to select a picture and then press [Play] to view the picture. You can press [Right] and [Left] to view the next/previous picture.

Manual: To view picture one by one through pressing [Right] or [Left] key.

Thumbnail: You can view several pictures in one display. When browsing the pictures, you can press [Right] or [Left] key to select next/previous picture, and press play [Right] to view the picture.

You can press [MENU] key once to go back to the previous menu.

4. Explorer Mode

Select [Explorer Mode] and press [Play] to enter the Explorer mode window will be displayed.

Press [Right] or [Left] to view related information about the following menu:

Internal Media, All Audio Tracks, All Video Tracks, All Image Files.

After selecting the sub-menu, press **▶||** key once to enter and view the related information. You can also press **[Menu]** key once to go back to the previous menu.

In **Internal Media mode** you can view all files, including recorded files and image files.

In **All Audio Tracks mode** you can only view audio files.

In **All Video Tracks mode** you can only view video files.

In **All Image files mode** you can view all images information.

5. Settings Mode

Select **[Settings]** mode and press **▶||** to enter the menu:

Press **▶||/◀◀** key to select next/previous item, and press **▶||** key once to enter the sub-menu.

You can press **[Menu]** key once to go back to the previous menu.

System Setting:

1: **Upgrade:** Spring out a dialog frame, warning if firmware need to be updated. If not, will exit.

2: **Restorable:** Spring out a dialog frame, warning whether to return the system to default value. If not, will exit.

Desktop:

Under the setting menu, select Desktop, press **▶||** to enter, and then press **▶||/◀◀** to select Desktop 1, Desktop2, Desktop3, Desktop4, Desktop5, Desktop6, Desktop7, Desktop8.

Language:

Under the settings menu, select Language, press **▶||** to enter, and then press **▶||/◀◀** key to select the next/previous language.

Information:

Under the setting menu, select Information, press **▶||** to enter, and you will see the company information, product number, flash memory, software version, card memory.

Troubleshooting

No power: Check AC adapter's connecting and confirm press PWR key

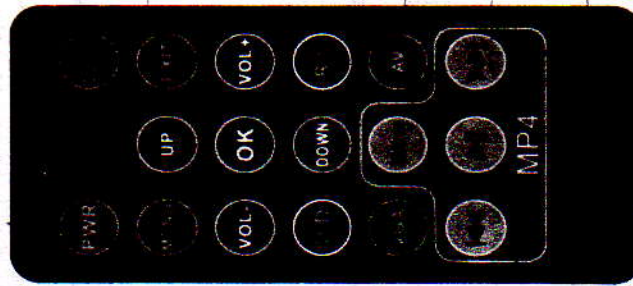
No sound: Check if volume is in a neutral position and if the headphone plug is well connected. Corrupted media file may also cause static noise.

OSD Scrambled Code: Check if the right display language has been selected.

Failure of downloading media files: Check whether USB cable is in a healthy condition and connected properly. Check if driver is installed correctly on the computer. Check if there is enough free space.

Remote Controller User Guide

Appearance



Keys' function & usage

PWR: Power off. Click this button twice, fans will be stopped within 15sec.

Gamma: System provides three Gamma options: CINEMA/NORMAL/BRIGHT

MENU: Use this button to enter the main menu:...

This button also can be used for returning to main menu when you are in the submenu.

Main menu has two submenus and it next menus as below:

DISPLAY:

Contrast

Brightness

Sharpness

Saturation

Tint

Color temperature

Recall (Restore system default settings)

SYSTEM:

Language (Support English and Traditional chinese)

OSD location (Adjust the display position of menu)

Transparency (Adjust the display transparency of menu)

OSD timeout (Define seconds of auto quit of menu without any operations)

Usage sample (Adjust transparency and OSD Location)

1. Press "MENU"

2. Select "System" by click "Down"

3. Press "OK"

4. Select "OSD Location" by click "Down"

5. Press "OK"

6. Press "VOL" to adjust OSD display position
7. Press "DOWN" to adjust Transparency directly
8. Press "Menu" continuously to quit the setting or press "EXIT" to quit setting, or it would be automatically quit after 15 seconds.

TIPS : Under "DISPLAY /ADVANCE/AUDIO" menus, you could select "RECALL" to restore to the default setting easily.

UP: Select the submenu above

DOWN: Select the submenu down

EXIT: To quit the menu or submenus, VOL adjustment.

VOL-: Decrease system volume.
Adjust/Select for the selected submenu.

VOL+: Increase system volume.
Adjust/Select for the selected submenu.

OK: Confirm the selection or enter the next submenu.

UID: Up/Down overturn of image.

R/L: Right/Left overturn of image.

VGA: Select VGA input as displaying source.

AV: Select AV input as displaying source, including external AV and MP4. However, external AV owns the priority, if both external AV and MP4 exist, AV signal should be disconnected before starting to use MP4 or fast reverse

MENU: Key interface or short-press to go back to previous menu

▶▶: Select next track or fast forward

◀◀: Select previous track or fast reverse

▶||: Play and Pause or short press enter sub-menu.

Power on, power off, pressed and hold for over 3 seconds.

Important notice of remote controller

16

"MP4" button on the remote controller could not start or stop MP4, and could not adjust the volume, for above operations, user has to use the panel of micro projector. After entering MP4, remote controller's MP4 part operations is same as using the micro projector's panel.

Important notice of projector

1. If you need to use battery, please open the rear cover and insert the battery, please ensure the battery is well connected.
2. When you charge the battery, please use A/C adapter. If the battery has used up, you need at least 6 hours for full charge, which can last 40~60 mins.
3. Battery's duration might be differentiated by usage, setting, fittings and volume set.
4. For long term idle, please ensure to charge the battery once every 3 months to avoid deep discharge, or take off the full charged battery and keep it in a dry environment.
5. Battery's life time might be gradually consumed and reduced after long time usage.
6. For safety consideration, please DO NOT put the battery into water or fire.
7. Please use the projector at normal environment, DO NOT use it in bad condition, such as rainy day, dust devil, etc.
8. Please DO NOT throw or strike the projector to avoid damage of components.
9. Please DO NOT clear the projector with organic acid to avoid appearance damage.
10. The performance of projection might be affected by original playing file, such as pixel, volume.

17