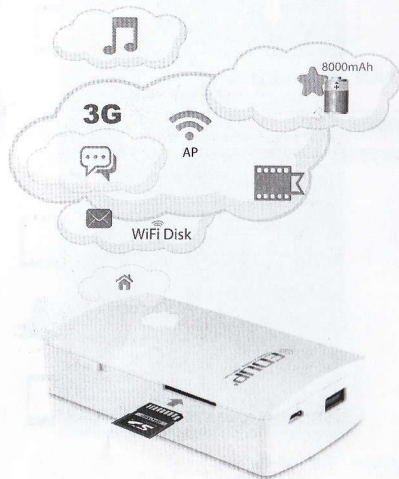


Quick Installation Guide

Wireless 3G Router / Cloud
8000mAh Lithium Batteries Built-in



Part 1: Package Contents



Cloud Assistant



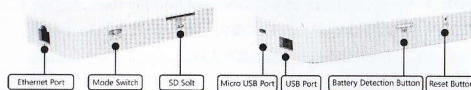
Quick Installation Guide



Micro USB Cable

If any of the above items are missing, please contact your reseller.

Part 2: Hardware Overview



Item	Description
Ethernet Port	Use as either a LAN port or WAN port.
Mode Switch	R-Power On; C-Charge; O-Power Off.
SD Slot	Plug the SD Card to share files.
Micro USB Port	Used for charging the device.
USB Port	Plug a 3G modem to share the 3G internet; Plug a USB disk to share files; Used for charging the smart phone or tablet.
Battery Detection Button	Press the button to show the battery level.
Reset Button	Press and hold the button for at least 5 seconds, and then the router will restore to the default setting.

LED	Description
System Status	Stable - The device is operating properly; Flashing - The device is starting up or restoring the factory configuration; Off - System is abnormal or power is off.
Battery Level	Marquee display the device in charging status, the 4 LED will off when the battery is fully charged. 4 LED display different battery level.

Part 3: Features Introduction

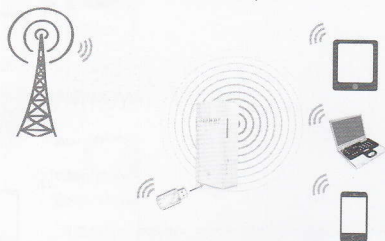
【Power Bank】 Cloud Assistant can charge for the smart phone, tablet, etc. Press and hold the battery level button to view the battery level status.

【Wireless Storage】 Cloud Assistant lets your smart phone, tablet and computer to share the video, music, photo and document from SD card or USB disk by wirelessly. At the same time, you can copy your files to the SD card or USB disk by wirelessly.

【3G Wireless Router】 Cloud Assistant supports four operation modes include 3G, Router, AP and Repeater. (The default mode is 3G mode. If you want to set up the wireless encryption or change to other modes, refer to the follow-up steps to login the router's management interface.)

3G Mode

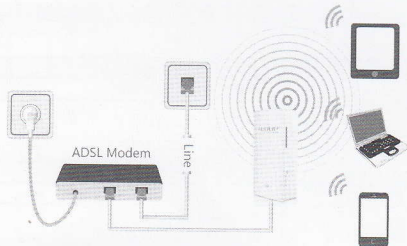
It enables Multiple Wi-Fi devices to share Internet via 3G networks. In this mode, the Ethernet port works as a LAN port.



Recommend for: outdoor environment, Mobile office, etc.

Router Mode

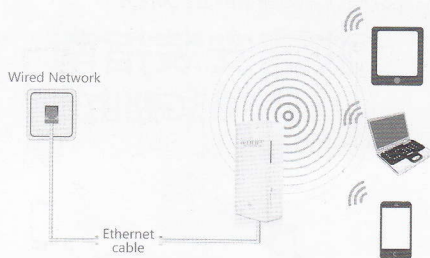
It enables Multiple Wi-Fi devices to share Internet via DSL/Cable Modem.



Recommend for: home, apartment, etc.

AP Mode

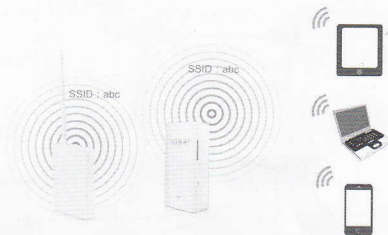
It extends your existing wired network to your wireless clients.



Recommend for: hotel, small office, etc.

Repeater Mode

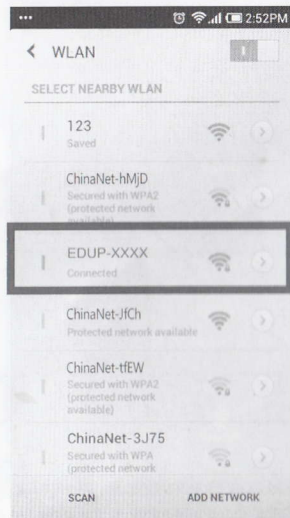
It extends the coverage of your wireless network, boost the wireless signal strength.



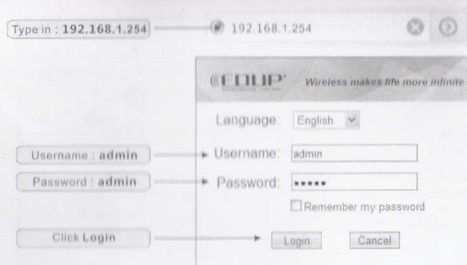
Recommend for: villa, big house, etc.

Part 4: Installation

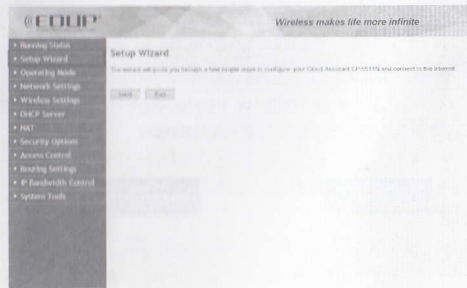
Step 1: From your laptop or mobile device go to your Wireless Utility to display the available wireless networks and select the Wi-Fi name (ex.: EDUP-XXXX) to connect .



Step 2: Open your Web browser and type 192.168.1.254 in the address bar, press Enter. A login page will pop up asking you for Username and Password. Enter the default Username admin and Password admin, click Login.



Step 3: Follow the Setup Wizard to finish the configuration step-by-step.



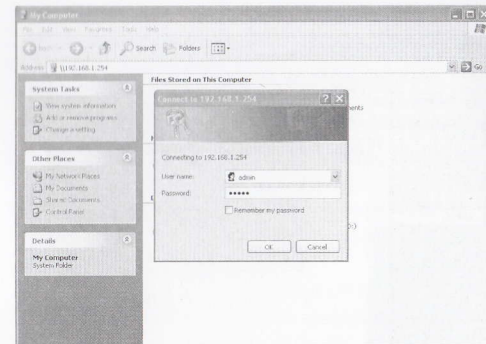
Note: After the configuration, from your laptop or mobile device go to your wireless utility to display the available wireless networks and select the network that you created for Internet access.

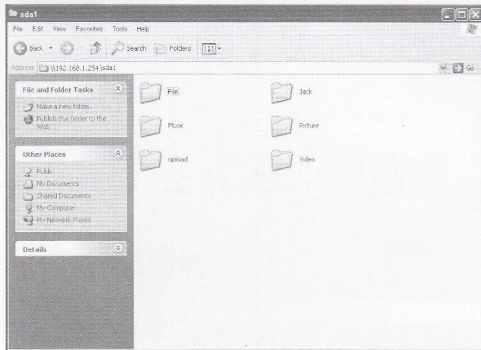
Part 5: Wireless Storage Application

Using the function of wireless storage, you need to insert your SD card or USB disk to Cloud Assistant and please make sure your Smart Phone, Tablet and PC have been connected to the Cloud Assistant .

Access Via PC

Step 1: Open My Computer and type ftp://192.168.1.254 in the address field, and press Enter. A login page will pop up asking you for User name and Password. Enter the default User name admin and Password admin, click OK. And then you can access all files on the SD card or USB disk.





Access via Smart Phone or Tablet

Step 1: Search the app on the App store or Google Play, and you also can scan the QR code to download and install the Cloud Assistant App to your iPhone, iPad or Android devices. (Qr code as shown in the packing cover)



Step 2: Once installed click on the icon  to open the Cloud Assistant.

