

Wireless-N MINI ROUTER

Quick Installation Guide(Q.I.G.)



REV.1.1

Introduction :

The mini Router has the wireless speed and range to power a complex set of networking applications to create a highly efficient mobile office or entertainment network in no time. Small enough to fit in the average pocket and with no cables to plug in, save a WAN cable, the router is uniquely suited to providing robust wireless networking to travelers, students, or anyone else for work or play. Supports the newest 802.11n standard, and provides backward compatibility with older 802.11b/g standards as well. With wireless speed up to 300Mbps, high bandwidth-consuming applications such as video streaming, using VoIP, or online gaming.

Main Features

- Complies with IEEE 802.11n, IEEE 802.11g, IEEE 802.11b standards
- Supports Router, Client, Bridge, Repeater, AP mode
- QoS function assures the quality of VoIP and multimedia streaming
- Wireless N speed up to 150Mbps or 300Mbps and Backward compatible with 802.11b/g products
- Compact and portable, powerful wireless signal as well
- Travel size design, ideal for home or travel use
- Supports WEP, WPA/WPA2, WPA-PSK/WPA2-PSK encryptions

Package Contents

Before you starting to use this router, please check if there's anything missing in the package, and contact your dealer of purchase to claim for missing items:

- 1 x Wireless N Mini Router
- 1 x Quick Installation Guide
- 1 x RJ-45 Networking Cable

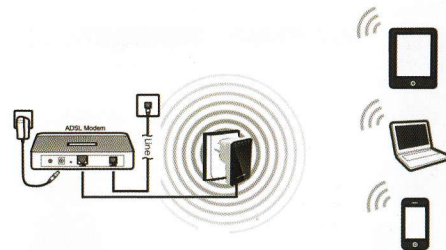
WEEE Directive & Product Disposal



At the end of its serviceable life, this product should not be treated as household or general waste. It should be handed over to the applicable collection point for the recycling of electrical and electronic equipment, or returned to the supplier for disposal.

Getting Started

Setting up a Wireless Infrastructure Network



For a typical wireless setup at home (as shown above), Please do the following:



1. You will need broadband Internet access (a ADSL, Cable Modem line into your home or office).
2. Consult with your ADSL or Cable Modem provider for proper installation of the modem.
3. Connect the ADSL or Cable modem to the Wireless N Mini Router. Plug the power plug of the Router in electrical wall socket.
4. Adding computers to the Wireless N Mini Router.

IMPORTANT NOTE


You can reset your WiFi Router to default setting by press and hold the 'RESET' button inside the tiny hole for 8 ~10 seconds.

You can use this solution if you forget your password.

Adding computers to the Wireless N Mini Router Router

1. Log on to the computer.
2. Open Connect to a Network by right-clicking the network icon  or  in the notification area.
3. Choose the wireless network "**Wireless-N**" from the list that appears, and then click **Connect**.
4. Type the network security key or passphrase if you are asked to do so, and then click **OK**.

You'll see a confirmation message when you are connected to the network.

5. To confirm that you added the computer, do the following:
Open Network by clicking the **Start** button , and then clicking **Control Panel**. In the search box, type **network**, and then, under Network and Sharing Center, click **View network computers and devices**.

You should see icons for the computer you added and for the other computers and devices that are part of the network.

Note : If you don't see icons in the Network folder, then network discovery and file sharing might be turned off.

For more information:

<http://windows.microsoft.com/en-US/windows7/Add-a-device-or-computer-to-a-network>

<http://windows.microsoft.com/en-US/windows7/Setting-up-a-wireless-network>

<http://windows.microsoft.com/en-US/windows-vista/Setting-up-a-wireless-network>

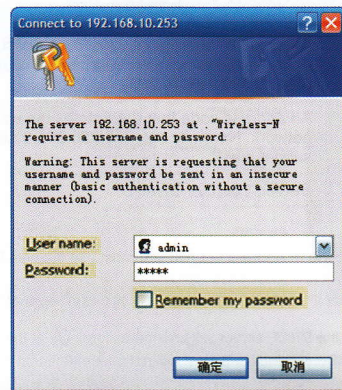
Configuring via Web Browser

Open web browser and type **http://192.168.10.253** in the browser's address box. This number is the default IP address for this device.



The login screen below will appear. Enter the "User Name" and "Password" and click "**OK**" to login.

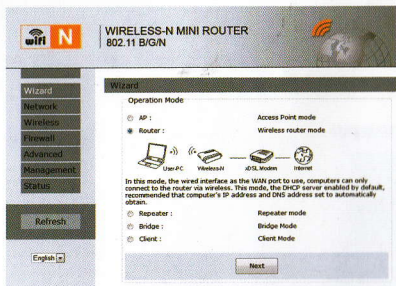
The default User name is "**admin**" and the Password is "**admin**".



Setup Wizard

After a successfully login, you can click the Quick Setup menu to quickly configure your Router.

Choose the Operation Mode you need, and then click **Next**.



AP Mode:

Wizard--Access Point mode

Access Point mode

SSID:

Channel:

Security Mode:

Set the wireless parameter. It's recommended that you rename an **SSID**, choose a **Security Mode** and enter a **Key**. Click **Save&Reboot** to reboot the Router and make the settings take effect.

Router Mode:

Wizard -- Wireless router mode

Wireless router mode

☒ Automatically from the network service provider to obtain an IP address (dynamic IP)

☐ ADSL Dial-up (PPPoE)

SSID:

Channel:

Security Mode:

Set the wireless parameter. It's recommended that you rename an **SSID**, choose a **Security Mode** and enter a **Key**.

Choose your WAN Connection Type.

If **Dynamic IP** is selected, the Router gets the IP address automatically from the DHCP server or the ISP. No configuration should be set and you can go on with the wireless configuration.

If **PPPoE** is selected, please enter the **User Name** and **Password** given by your ISP. These fields are case-sensitive.

Wizard -- Wireless router mode

Wireless router mode

☐ Automatically from the network service provider to obtain an IP address (dynamic IP)

☒ ADSL Dial-up (PPPoE)

User Name:

Password:

Service Name:

SSID:

Channel:

Security Mode:

Click **Save&Reboot** to reboot the Router and make the settings take effect.

Repeater Mode:

Wizard -- Repeater mode

Repeater mode

SSID	BSSID	Channel	Encrypt	Signal	Select
Wireless-N1q	00:13:13:00:08:f3	11 B+G+N	NO	100%	<input type="button" value="Select"/>
G5	00:a1:b0:aa:bb:cc	3 B+G	WPA2-PSK	100%	<input type="button" value="Select"/>
Repeater	80:3f:5d:90:e7:e4	1 B+G+N	NO	100%	<input type="button" value="Select"/>
123	00:13:13:00:06:e0	6 B+G+N	NO	80%	<input type="button" value="Select"/>
Wireless-N252	00:0a:07:52:09:40	6 B+G	WPA2-PSK	65%	<input type="button" value="Select"/>
ChinaNet-5005	08:18:1a:d6:ca:b9	11 B+G	WPA2-PSK	60%	<input type="button" value="Select"/>
Showing_room	00:0d:09:81:09:04	8 B+G+N	WPA2-PSK	55%	<input type="button" value="Select"/>
Wireless-N	00:13:13:00:06:17	11 B+G+N	NO	45%	<input type="button" value="Select"/>

Select the **SSID** of the target network and click **Select**.

Wizard -- Repeater mode

Repeater mode

SSID:

Key: ☐ Unmask

The target network's SSID will be automatically filled into the wireless setting figure. Select the Password. Then click **Save&Reboot** to reboot the Router and make the settings take effect.

Wizard -- Bridge Mode

Bridge Mode

SSID:

Security Mode:

SSID	BSSID	Channel	Encrypt	Signal	Select
Wireless-N1q	00:13:13:00:08:f3	11 B+G+N	NO	100%	<input type="button" value="Select"/>
GS	00:a1:b0:aa:bb:cc	3 B+G	WPA2-PSK	100%	<input type="button" value="Select"/>
Repeater	80:3f:5d:90:e8:92	1 B+G+N	NO	100%	<input type="button" value="Select"/>
123	00:13:13:00:06:e0	6 B+G+N	NO	80%	<input type="button" value="Select"/>
Wireless-N252	00:0a:07:52:09:40	6 B+G	WPA2-PSK	60%	<input type="button" value="Select"/>
ChinaNet-5005	08:18:1a:d6:ca:b9	11 B+G	WPA2-PSK	45%	<input type="button" value="Select"/>

Select the **SSID** of the Access Point you want to access and click **Select**.

Wizard -- Bridge Mode

Bridge Mode

SSID:

Security Mode:

SSID:

Key:

☐ Unmask

The target network's SSID will be automatically filled into the wireless setting figure. Select the Password. Then click **Save&Reboot** to reboot the Router and make the settings take effect.

Wizard -- Client Mode

Client Mode

SSID	BSSID	Channel	Encrypt	Signal	Select
Wireless-N1q	00:13:13:00:08:f3	11 B+G+N	NO	100%	<input type="button" value="Select"/>
Repeater	00:23:13:16:1c:32	5 B+G+N	NO	100%	<input type="button" value="Select"/>
GS	00:a1:b0:aa:bb:cc	3 B+G	WPA2-PSK	100%	<input type="button" value="Select"/>
123	00:13:13:00:06:e0	6 B+G+N	NO	80%	<input type="button" value="Select"/>
Wireless-N252	00:0a:07:52:09:40	6 B+G	WPA2-PSK	65%	<input type="button" value="Select"/>
ChinaNet-5005	08:18:1a:d6:ca:b9	11 B+G	WPA2-PSK	60%	<input type="button" value="Select"/>

Select the **SSID** of the Access Point you want to access and click **Select**.

Wizard -- Client Mode

Client Mode

SSID:

Key:

☐ Unmask

The target network's SSID will be automatically filled into the wireless setting figure. Select the Password. Then click **Save&Reboot** to reboot the Router and make the settings take effect.

LAN Settings

Please click "**Network** → **LAN Settings**" located at the web management interface, the following message will be displayed on your web browser:

IP Address:	Enter the IP address of your Router or reset it in dotted-decimal notation Wireless-N Router (factory default: 192.168.10.253).
Subnet Mask:	An address code that determines the size of the network. Normally use 255.255.255.0 as the subnet mask.
DHCP Type:	Server, Client or Disable

Note:

- 1) If you change the IP Address of LAN, you must use the new IP Address to login the Router.
- 2) If the new LAN IP Address you set is not in the same subnet, the IP

Address pool of the DHCP server will change accordingly at the same time, while the Virtual Server and DMZ Host will not take effect until they are re-configured.

Connect to Internet

Please click "**Network** → **WAN Settings**" located at the web management interface, Following example is for "PPPoE" WAN setting.

Enter the "PPPoE Username" and "PPPoE Password" that ISP provided and leave the others. (The "Service Name" can be blank)

Click "**Apply Settings**" button to save the settings then reboot the router. After reboot, your router is now ready for Internet connection.

If your ISP provides a static or fixed IP Address, Subnet Mask, Gateway and DNS setting, select '**Static IP**'. Enter the **IP address / Subnet Mask / Default Gateway / MTU / Primary / Secondary DNS** in dotted-decimalnotation provided by your ISP.

If your ISP provides the DHCP service, please choose '**DHCP Client**', and the Router will automatically get IP parameters from your ISP. This page displays the WAN IP parameters assigned dynamically by your ISP, including IP address, Subnet Mask, Default Gateway, etc.

Wireless Base Configuration

Please click **"Wireless → Basic Settings"** located at the web management interface, the following message will be displayed on your web browser:

You could configure the minimum number of Wireless settings for communication, such as Network Name (SSID) and Channel. The Access Point can be set simply with only the minimum setting items.

Wireless Basic Settings

☐ Disable Wireless LAN Interface

Band: 2.4 GHz (802.11b/g/n)

Wireless Mode: AP Virtual Wireless Network

Network Type: Infrastructure mode

SSID: Wireless-N

Channel Width: 40MHz

Control Sideband: Lower

Channel: Auto

Broadcast SSID: Enabled

WMM: Enabled

Data Rate: Auto

Associated Clients: Show Active Clients

☐ Enable Mac Clone (Single Ethernet Client)

☐ Wireless Repeater

SSID of Extended Interface: _____

Refresh

Disable Wireless	Wireless On/Off
Band:	Supports 11G/11G/11N mixed modes.
SSID:	Main Service Set Identifier. It's the "name" of your wireless network.
Broadcast SSID:	Select "Enable" to enable the device's SSID to be visible by wireless clients
Channel Number	This field determines which operating frequency will be used. The default channel is set to Auto, so the AP will choose the best channel automatically. It is not necessary to change the wireless channel unless you notice interference problems with another nearby access point.

Wireless Security Configuration

Please click **"Wireless → Wireless Security"** located at the web management interface, the following message will be displayed on your web browser:

Setup the wireless security and encryption to prevent from unauthorized access and monitoring. Supports 64/128-bit WEP, WPA, WPA2 encryption methods.

Wireless Security

Select SSID: Root AP - Wireless-test

Wireless network security settings

Security Mode: Disable

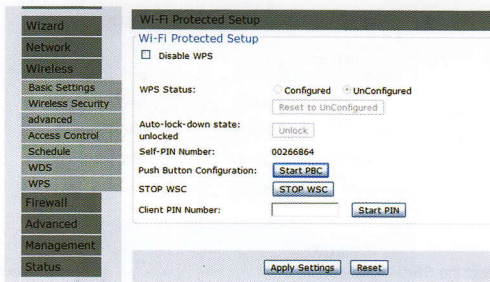
802.1x Authentication: WEP, WPA, WPA2, WPA-Mixed

Apply Settings Reset

When you finish, click **'Apply Settings'**.

Please click "**Wireless** → **WPS**" located at the web management interface, the following message will be displayed on your web browser:

you can establish a wireless connection between wireless adapter and Router using either Push Button Configuration (PBC) method or PIN method.



Disable WPS: Enable / Disable

Self-PIN Number: If the new device supports Wi-Fi Protected Setup and the PIN method, you can add it to the network by PIN Number.

PBC method: If the wireless adapter supports Wi-Fi Protected Setup and the Push Button Configuration (PBC)

Step 1: Press the **WPS** button of the Router directly for 2 - 3seconds or Click web management interface '**Start PBC**'.

Step 2: Press the WPS button of the Adapter directly for 3 seconds.

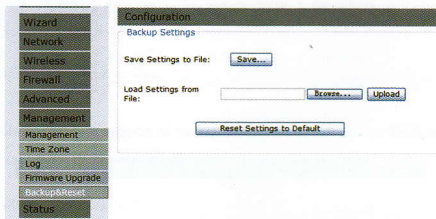
Step 3: Wait for a while until the next screen appears.
Click Finish to complete the WPS configuration.

Router Administrator Setup

Factory Default and Settings Backup , Restore

Factory Default and Settings Backup , Restore You can backup all Setting of this router to a file, so you can make several copied of router configuration for security reason.

To backup or restore router setting, please follow the following instructions:
Please click click '**Management** → **Backup&Reset**' located at the web management interface, then the following message will be displayed on your web browser:



Save Settings	Press ' Save... ' button, and you'll be prompted to download the configuration as a file, you can please save it as another filename for different versions, and keep it in a safe place.
Load Settings	Press ' Browse... ' to pick a previously-saved configuration file from your computer, and then click ' Upload ' to transfer the configuration file to router. After the configuration is uploaded, the router's configuration will be replaced by the file you just uploaded.
Reset Settings	Click this ' Reset Setting to Default ' button to remove all settings you made, and restore the configuration of this router back to factory default settings.

Firmware Upgrade

The system software used by this router is called as 'firmware', just like any applications on your computer, when you replace the old application with a new one, your computer will be equipped with new function. You can also use this firmware upgrade function to add new functions to your router, even fix the bugs of this router.

Please click '**Management** → **Firmware Upgrade**' located at the web management interface, then the following message will be displayed on your web browser:

Click '**Browse...**' button first, you'll be prompted to provide the filename of firmware upgrade file. Please download the latest firmware file from our website, and use it to upgrade your router.



After a firmware upgrade file is selected, click '**Upgrade**' button, and the router will start firmware upgrade procedure automatically. The procedure may take several minutes, please be patient.

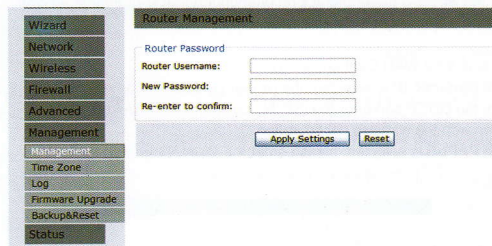
NOTE: Never interrupt the upgrade procedure by closing the web browser or physically disconnect your computer from router. If the firmware you uploaded is corrupt, the firmware upgrade will fail, and you may have to return this router to the dealer of purchase to ask for help. (Warranty voids if you interrupted the upgrade procedure).

Change management password

Default password of Wireless Router is "**admin**", and it's displayed on the login prompt when accessed from web browser. There's a security risk if you don't change the default password, since everyone can see it. This is very important when you have wireless function enabled.

To change password, please follow the following instructions:

Please click '**Management** → **Management**' menu on the web management interface, the following message will be displayed on your web browser:



When you finish, click '**Apply Settings**'; If you want to keep original password unchanged, click '**Reset**'.