

LED Table Lamp



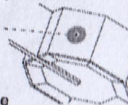
Operation manual

Use switch:

- 1.Desk lamp has one touch key, 4 levels brightness.
- 2.Touch the key, the brightness can adjust from low to high brightness and the fifth touch will power off the lamp.Long press over 2seconds will power off the lamp in any on status.

3.Valid touch area

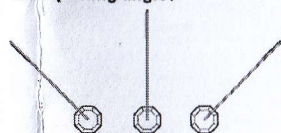
Correct touch method:
touch the valid area
and keep about 1
second and then release
to adjust the brightness.



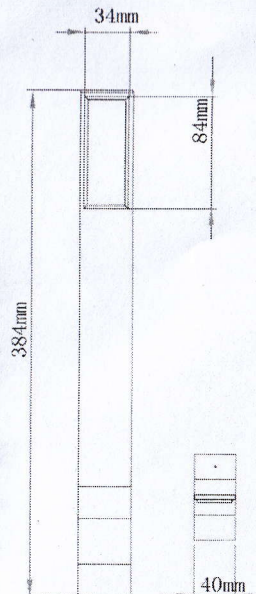
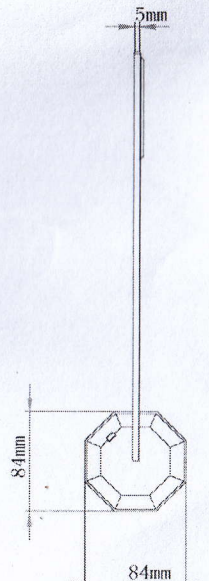
Indicator description:

- 1.1st level brightness: one cycle the indicator will only be on one time. 2nd level brightness: in one cycle the indicator will be on 2 times; Same method in 3rd and 4th level brightness.
2. In charging mode the indicator will flash. After having full charged the indicator will keep always on.

Valid putting angle:



Dimension of product:



Power supply mode:

- 1.Internal battery: can continues work about 2-60 hours. It will different in using different brightness.
- 2.Attached special power adapter: 5V/2100mA. Can get dual brightness as using battery.
- 3.Get the power from computer: We can charge the device in any computer USB port. The brightness will be same as internal battery mode.

In normal status it can be full charged in 2 hours

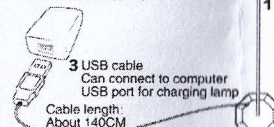
Attention: 1. If the user use Customized adapter the device can lighting, in same time it can be charged.

2. If the user use computer or other USB adapters it will not charge during lighting mode.

(Note: This work method can protect your computer and other none-Customized adapter avoid over current and damaged. The Customized adapter can also charge for iPhone and iPad.)

- Packing list:**
- 1.Desk lamp
 - 2.Customized adapter
 - 3'MINI USB cable

2 Customized adapter:
Can work with electric supply
Customized adapter specification:
5V 2100mA(max)



Technology specification:

LED: HI POWER LED
Power: Max 4W
Brightness: 30cm(distance), 100-650 lux,
4 levels brightness, max brightness is
calculated in customized adapter mode.
Color temperature: 5300-5500K
Color index: Ra>90
Internal li-polymer battery: 3.7V 1000mA
Customized adapter: 5V 2100mA
LED life: >50000 hours
Leakage current: <30uA
Working temperature: 0-40centigrade

Caution:

- ⊗ Touch can not work. Insert the USB cable to charge the device, the system can fit t his issue.
- ⊗ Long time not to use it please charge it once a month to protect the battery.
- ⊗ Don't use other spec adapter or USB cable on it, otherwise may damage the devcie.

Daily maintain:

Maintenance the surface of desk lamp :
Use a soft, dry cloth to wipe the desk lamp surface and parts.do not use solvents such as kerosene or pine fragrance,May damage LAMP surface.
LED light guide plate maintenance: use a soft dry cloth to gently wipe the guide,Light board surface to avoid scratching and squeezing.

WARNING!

- In the following status, immediately cut off the power supply and get help from the sales of manufactures.
- ⊗ Electronic components encounter rain or other liquid erosion
 - ⊗ Products stench gas or an unusual flickering
 - ⊗ The cable was damaged and can see the bare wire
 - ⊗ The shell was damaged